

# Dateline

• from DATELINE on page 12

care clinics are by appointment only.

**Sleep/Wake Disorders Canada** meets at the Burnhamthorpe Library, 1350 Burnhamthorpe Rd. E., in Mississauga, from 7-9:30 p.m.

The Halton Regional Health Department holds the **Measles Immunization Catch-Up Clinic** at Bishop Reding Secondary School from 3:30-

6:30 p.m. The event is for students who didn't receive a measles vaccine at their school clinics. No appointment necessary. Call 825-6190 for more information.

**Chronic fatigue syndrome sufferers** meet at 1 p.m. For details, call 878-1802 or 876-3713.

The Canadian Red Cross Society holds a **blood donor clinic** at Holy Rosary Parish Hall,

139 Martin St., from 1:30-8:30 p.m.

The Milton Children and Youth Centre holds registration for the upcoming seven-week workshop series **'Childhood Journey.'** The series for parents and care givers of children from infancy to 10 years of age looks at children's strengths and uniqueness. Cost is \$60, which includes care for children infant-aged to five-year-olds. Call

876-1244 for more information.

Bronte Meadows Tennis Club holds **registration** at John Tonelli Sports Centre from 7 to 9 p.m. Free tennis balls available.

The Milton Music Teachers' Association presents **Students' Recital** at the Milton Seniors' Activity Centre, 500 Childs Dr., at 7 p.m. Admission is by donation. All proceeds go to the Deidre Scholtz Fund. For more information, call Val Foggin at 854-0437.

## Friday Apr. 19

It's **Hot Meal Deal Day** at the Milton Seniors' Activity Centre, 500 Childs Dr., from 11:30 a.m. to 1 p.m. Seniors are invited to enjoy a hot lunch and socialize.

**Milton Concert Productions** presents the fourth and final concert of the season's Nocturne series, 'The Lyric Harp.' Maestro Kerry Stratton of the North York Symphony Orchestra leads an evening of harp, flute and strings at the Milton Baptist Church (Nipissing and Thompson roads) at 8 p.m. Tickets cost \$20 (\$13 for students / seniors). For information or advance tickets, call Blanche at 878-4604 or Jim at 878-7397.

## Friday Apr. 19-20

Bronte Meadows Tennis Club holds **registration** at John Tonelli Sports Centre from 7-9 p.m. Friday and 10 a.m. to 1 p.m. Saturday. Free tennis balls available.

## Saturday Apr. 20

Grace Anglican Church hosts the **Leap Into the Sun Dinner and Dance** at Milton Leisure Centre on Main Street East. The evening features West Indian cuisine and music. Cocktails are served at 6:30 followed by dinner, and dancing until 1 a.m. Tickets cost \$20 in advance or \$25 at the door. For tickets, call Daryl Taylor at 875-6732 or Bev Faulkner at 878-3156.

The **Second Annual Tiptoe Through the Tulips Dance and Casino Night** in support of research and programs for Parkinson's Disease takes place at the C.A.W. hall. The 7:30 p.m. event features music and lots of prizes. Tickets cost \$10. Call Lynda at 875-1819.

St. George's Choir presents an **organ concert** by Willem Van Suydam at 7:30 p.m. The Anglican church is located at Guelph Line and Derry Road in Lowville. Tickets, which cost \$10, are available from any choir member or by calling Catherine Blinn at 878-8505.

A two-day St. John Ambulance **standard first aid course**, which meets industry, business and government requirements, begins. The course continues April 27. For more information and registration, call 878-4330.

## Monday Apr. 22

The Milton Children and Youth Centre, 917 Nipissing Rd., holds registration for **Family Time**. Parents and their children are invited to take part in creative arts and circle time with songs, stories, toys and games as well as meet other parents. Call 876-1244 for details.

## Tuesday Apr. 23

The Milton Seniors' Activity Centre, 500 Childs Dr., hosts the annual **English Tea and Social** at 2 p.m. On the menu are fancy sandwiches, scones with jam and clotted cream, and, of course, tea. The cost is \$4 per person. Tickets are available at the centre. Call 875-1681.

Do you have questions about your infant's or preschooler's hearing, speech, behaviour or motor skills? The Milton Children and Youth Centre, 917 Nipissing Rd., co-hosts a **free consultation and screening clinic** from 9-11 a.m. with the Developmental Early Identification and Prevention Program. No appointment needed. For more information, call 876-1244.

## Tuesday Apr. 23-24

St. John Ambulance holds a week-day **standard first aid with Level A CPR course**. The two-day course meets industry, business and government requirements. For more information and registration, call 878-4330.

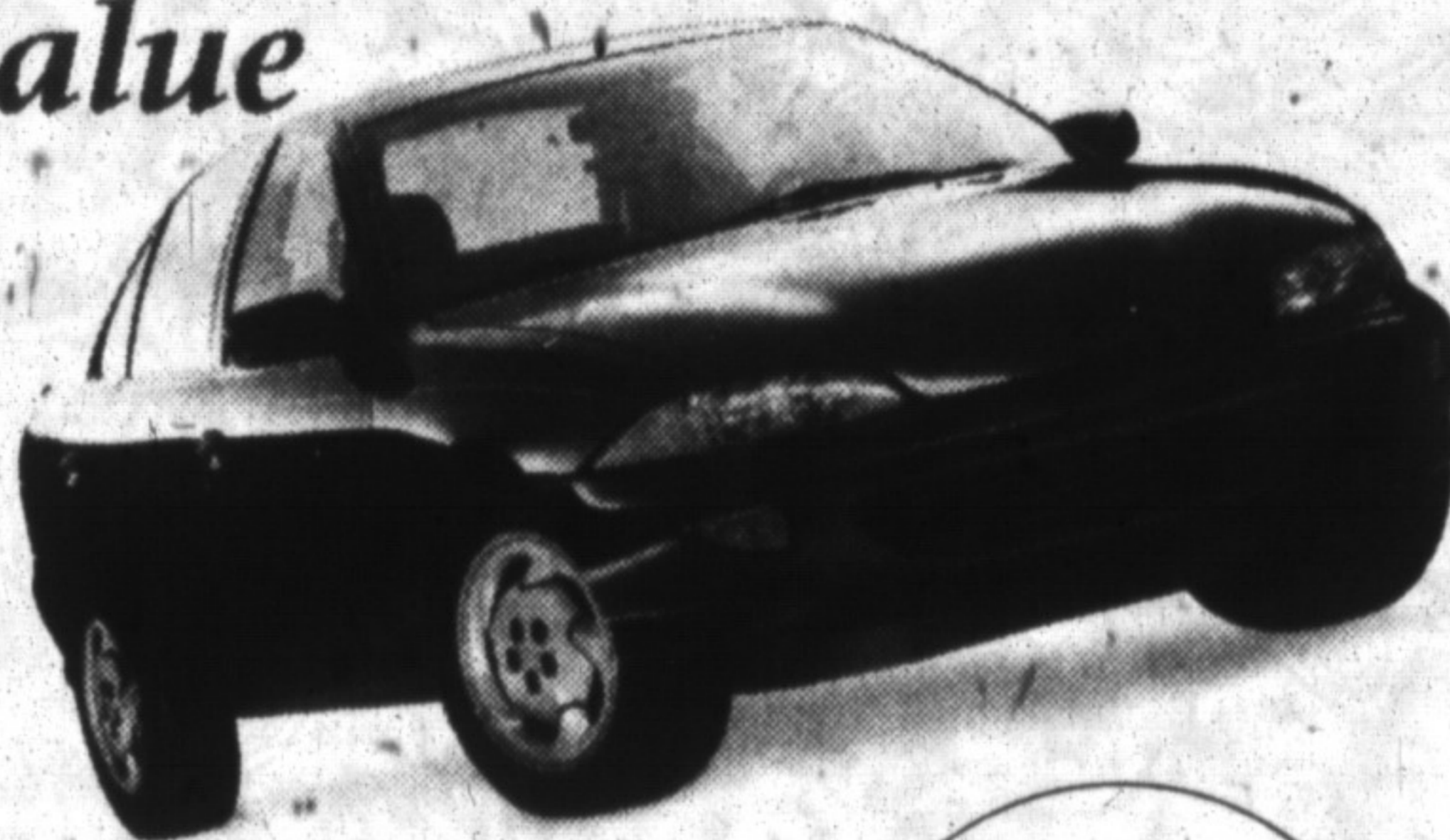
# Two of the best reasons to buy Chevrolet:

**\$13,998** 1. *value*

plus freight \$595

SMARTLEASE  
**\$218**

per month/36 months with a down payment of \$2,082, security deposit \$300 and freight \$595.



CANADA'S BEST SELLING CAR

SIX YEARS RUNNING

1996  
**Chevrolet Cavalier**  
sedan

- dual air bags
- 4-wheel ABS
- rear door child security locks
- 2.2 litre engine
- 5-speed manual transmission
- folding rear seat
- mechanical trunk release

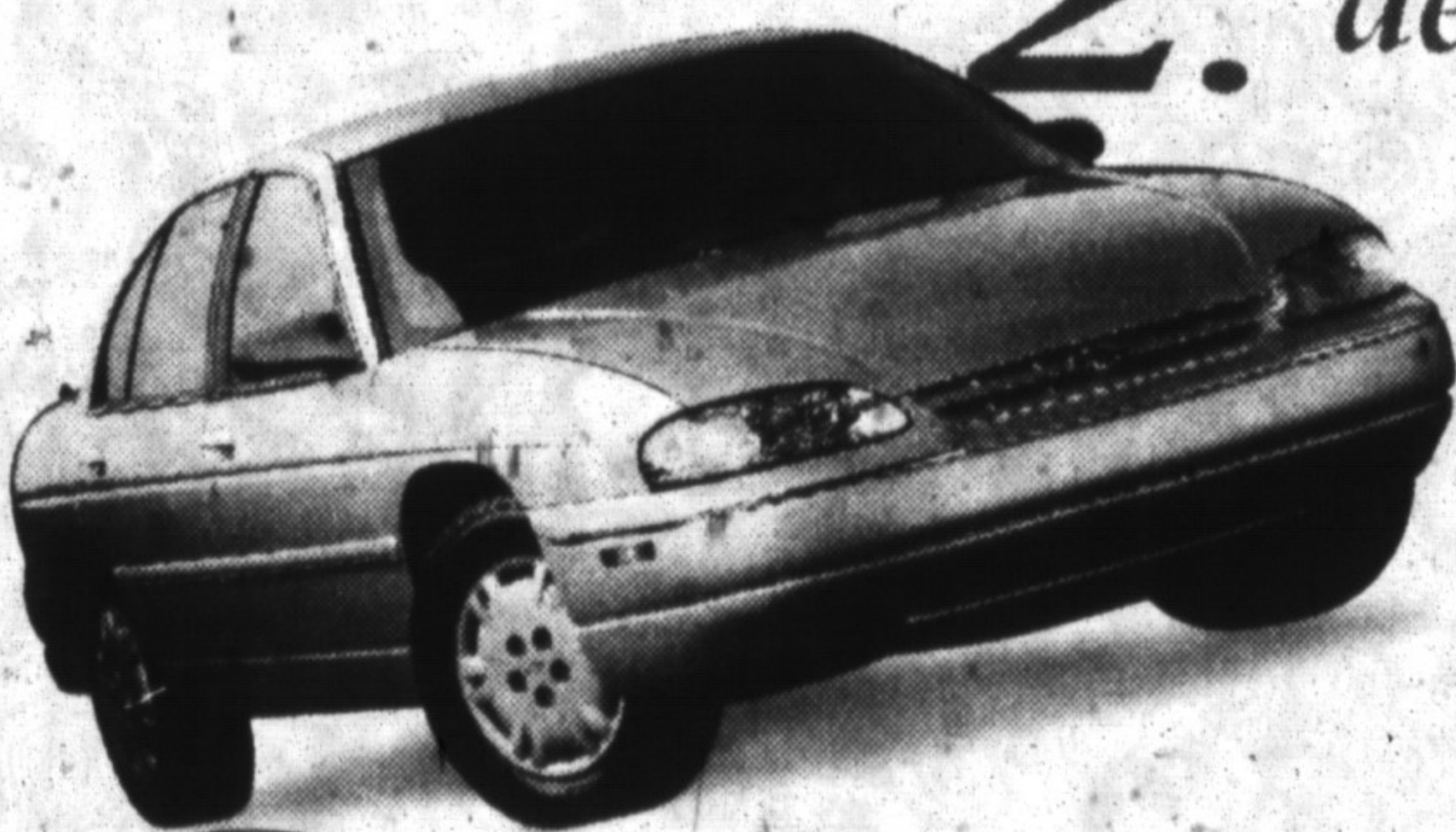
2. *dependability*

**\$20,888**

plus freight \$760

SMARTLEASE  
**\$298**

per month/36 months with a down payment of \$3,726, security deposit \$390 and freight \$760.



1996  
**Chevrolet Lumina**  
sedan

- dual air bags
- 4-wheel ABS
- 3.1 litre V6 engine
- power windows
- power door locks
- automatic transmission
- air conditioning
- AM/FM stereo cassette
- tilt steering
- PASS-Key II theft-deterrent system

VALUE PRICED AT YOUR CHEVROLET STORE



Don't forget to use your GM Card Savings toward the purchase of your next GM vehicle.

**SMARTLEASE** Smart customers use SMARTLEASE, a custom-designed lease plan to fit your specific needs. You can pay zero down, lower your monthly payments or use your trade-in.

You should know this: Licence, taxes and insurance not included. Dealer may sell or lease for less. Other lease terms available. Some mileage conditions apply. OAC. See Dealer for details. Subject to GM Card Program Rules. \*TD and GM are licensed users of Marks™