

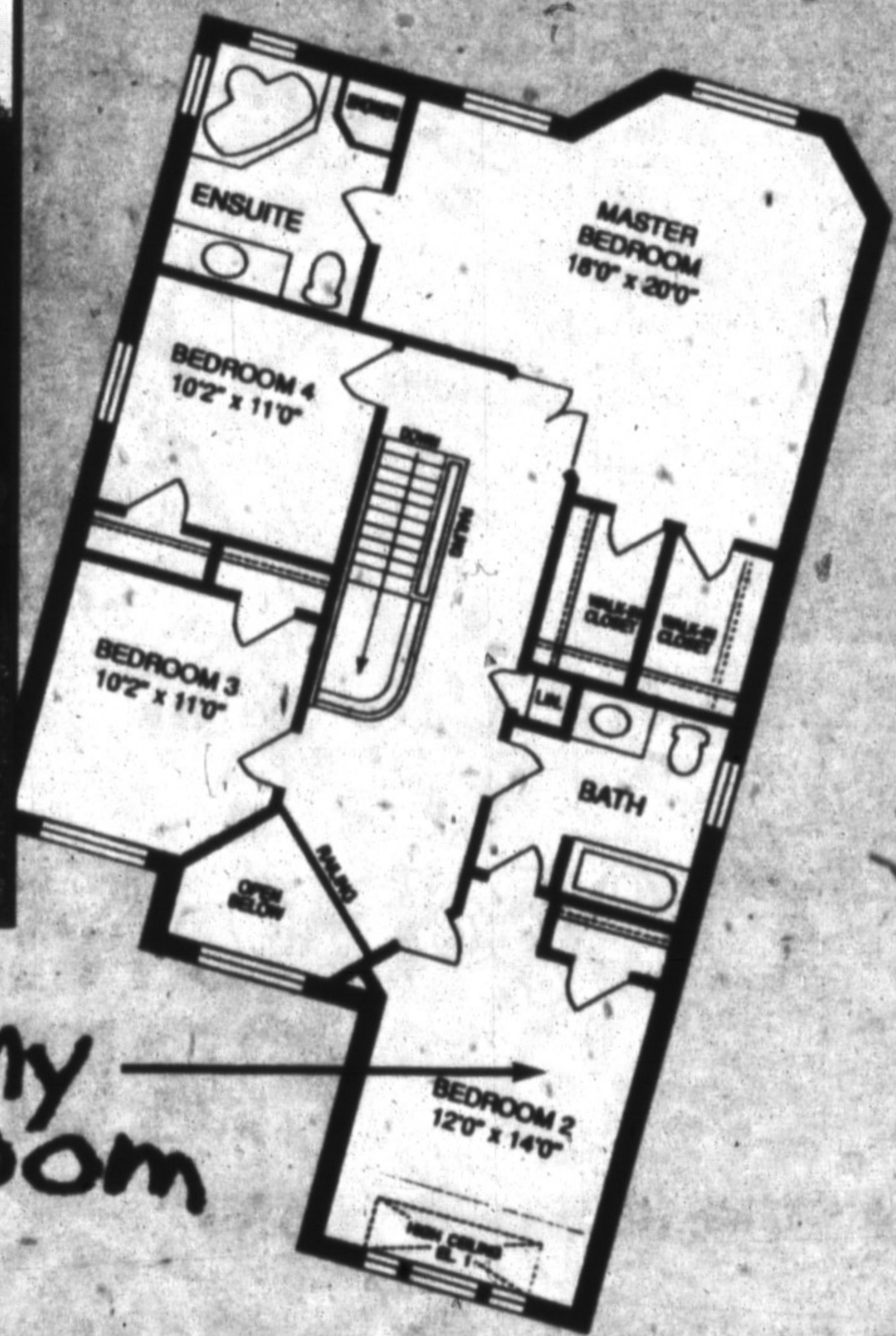
Look inside this 8 page section for an outstanding selection of the areas finest homes.

I can't wait to be sent to my room!

"It's a really neat place to be. There's room for all my important stuff. Our new home has lots of big windows. And, there's nothing better than when Mom reads me a story by the fireplace."

"Mom and Dad love our Fieldgate home too. Dad says there's even enough room for all Mom's clothes in their big walk-in closet. They even let me take a bath in the big tub in their bathroom."

"Take it from me. If you'd like to live in a really, really great place, you must buy a Fieldgate home"



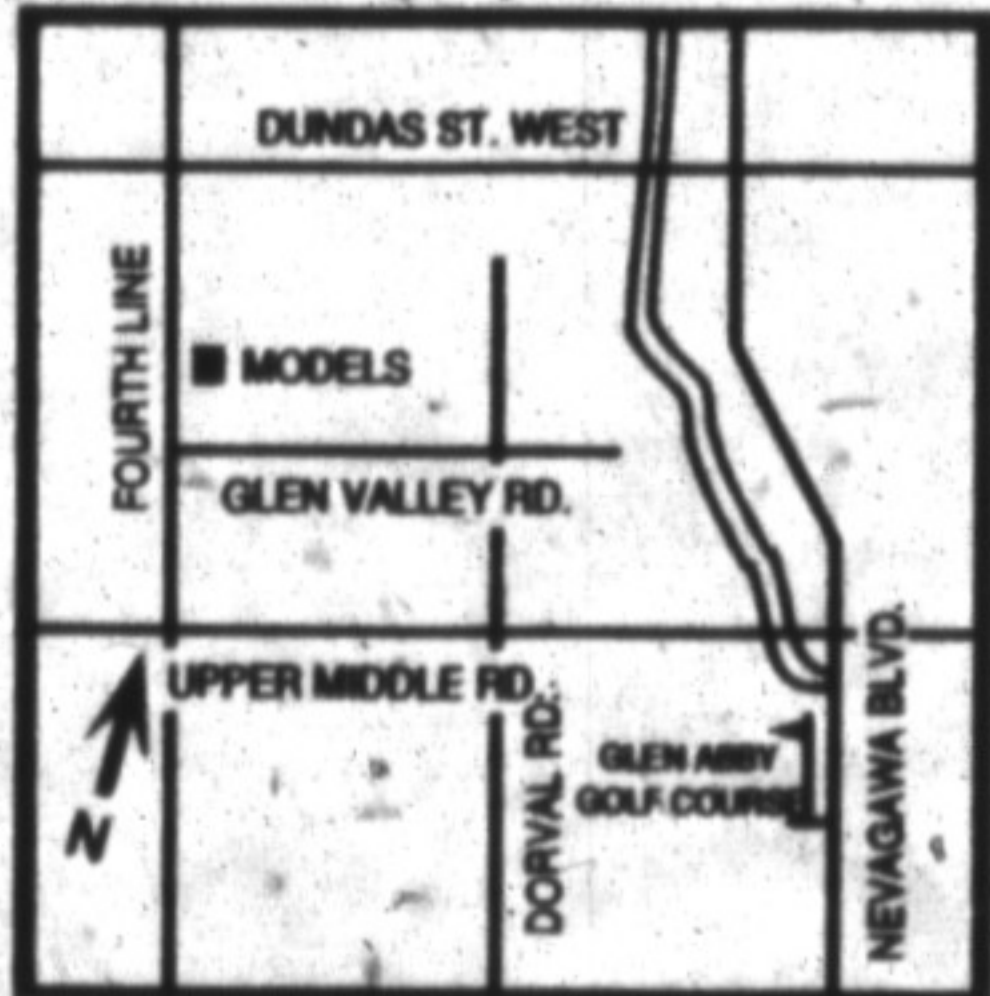
OAKVILLE

What a picturesque setting, Glen Abbey Golf Course, stunning wooded ravines along Sixteen Mile Creek and numerous walking trails at your doorstep.

- 40', 50' and some court lots
- all clay brick, open-concept plans, high ceilings, media rooms, great rooms, look through, gas fireplaces, spacious master bedrooms with luxurious ensuites and more!

From just **\$179,900**

up to 4,000 sq.ft.



TRADITION THAT LASTS ...
VALUE THAT GROWS

Sales Office Hours:

Mon - Thurs. 1 - 8 p.m.
Closed Fridays.

Sat, Sun and holidays 11 a.m. - 6 p.m.

SEE OUR MODELS

Prices and specifications subject to change without notice. To qualified buyers. Ask sales agent for details. E.O. & E.

MISSISSAUGA

Exciting, refreshing designs in the heart of the city.

- 35' and 40' lots
- all clay brick, open-concept plans, covered porches, cold cellars, breakfast bars, look throughs, spacious masters with private ensuites and more!

From just **\$196,900**

up to 3,000 sq.ft.

