

No More Excuses. It's Time.

Weight Watchers

Prepay and Save!

Buy any Pre Payment Plan
and registration is free!

March 25 - April 27, 1996

Milton Baptist Church
Nipissing & Thompson Rd.
Call 1-800-651-6000
for meeting times

Weight Watchers

Contribution Caribbean style

Organizers of the recent Caribbean Sizzle dinner dance presented a cheque for \$5,047.37 to the Milton District Hospital Foundation recently. From left are organizers Mary Long and Anne Marie Gordon, hospital foundation president Jane Copeland, organizer Jo-Anne Van-Slingerland and Mayor Gord Krantz.



Photo by
Graham Paine



IT'S TIME TO EXPECT MORE FROM A CAR COMPANY

THE '96 MAXIMA GXE

A GREAT DEAL NO MATTER HOW YOU LOOK AT IT.

BUY

\$25,987*
\$2,611 BELOW M.S.R.P.

OR

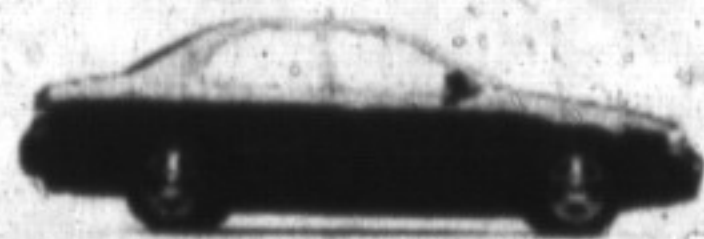
LEASE

\$379/MO.†

Fully equipped luxury and performance with the lightest and most powerful engine in its class:

190 hp 3.0L V6 with liquid-filled engine mount • 4-speed automatic transmission

- Power windows, door locks and heated mirrors • Full instrumentation • Air-conditioning (CFC-free)
- Dual overhead map lights • 50-watt AM/FM stereo cassette • Dual airbags
- Steel side door impact beams • 4-wheel disc brakes • Full-size spare tire and much more!



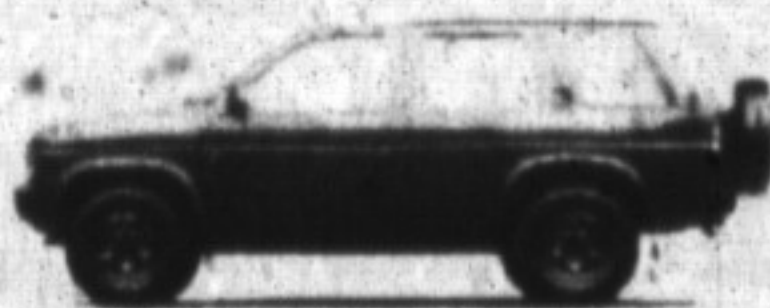
'95 ALTIMA GXE WITH AUTO
NOW \$19,987**

\$2,500 less than a Camry!
The Altima comes equipped with a 2.4L, 150 hp powerplant (that's more standard horsepower than Accord or Camry), automatic, air-conditioning (ahh), cruise control, dual airbags, power locks, windows and mirrors, AM/FM stereo cassette, passive 4-wheel steering and more!



'95 QUEST XE
NOW \$22,987***

Why pay \$8,500 more (that's a lot) for a Previa†† (and that's compared to our regular price). The people-haulin' Quest XE comes with a 151 hp V6 engine, automatic, air-conditioning (ahh), 7-passenger seating, power/locks, windows and mirrors, AM/FM stereo cassette, roof rack (neat!) and more!



'95 PATHFINDER XE PWR & SPRT
NOW \$26,987***

Loaded with go-anywhere 4-wheel drive, automatic transmission, a mudslinging 3.0L V6 engine, rear wheel ABS, air-conditioning, split folding rear bench seat, power windows, locks and mirrors, chrome wheels, rear tire carrier, cruise control, a kickin' B-speaker, 130-watt AM/FM stereo cassette and more!

Nissan Offers The Best Automotive Full-Line Warranty.

IT'S TIME TO EXPECT MORE FROM A CAR DEALER



Smart people always read the fine print. And they always wear their seatbelts. *Special No-Nonsense "Walk-Away" low km 36 month lease for '96 Maxima GXE (U4RG76 AE00) of \$379/mo. O.A.C. \$2,293 down payment or equivalent trade; excludes freight, P.D.I., taxes and licence; 1st lease payment and security deposit due at lease signing. Mileage conditions apply. Model shown with optional alloy wheels. **Specially priced '95 Altima GXE (T4RG75 AE00). Model shown with optional alloy wheels. †Based on M.S.R.P. comparison of '95 Altima GXE A4 vs. Camry LE A4. ***Specially priced '95 Quest XE (V6MG75 CC00). ††Based on M.S.R.P. comparison of '95 Quest XE vs. Previa LE. †††Specially priced '95 Pathfinder XE (SCLG75 CS00). Model shown with optional fender flares. Limited-time offers while supplies last; exclude freight, P.D.I., applicable taxes and licence. Dealers are free to set individual selling prices.

Charges overblown, union

• from PICKET on page 4

Kingsbury said there had been incidents reported to him of special needs children trying to enter the campus and being so harrassed by picketers that they were unable to settle down all day.

Mr. Kingsbury said the closure in no way had anything to do with the announcement of cuts to Halton Board of Education employees who received layoff notices three days before the school shut down.

"Staff or teachers would get no benefit from shutting the school in that regard," Mr. Kingsbury said. "There's a lot going on at the picket line. Things have escalated quite badly. I would have thought OPSEU workers would have taken a softer line with special needs kids. Harrassing them is

not a way to get public sympathy for the strike."

Mr. Dean, a social worker at the Trillium School, a special residential school for those with learning difficulties, said he pickets at the south entrance to the campus and has seen no harrassment to special needs kids, nor any violence by picketers of any kind, adding he "would not be a party to violence." Mr. Dean was not able to comment on events at the main entrance.

He did say delays are an expected part of crossing picket lines and admitted that crossing lines would be difficult for special needs kids. He suggested to Ms Kearney in his letter that any incidents should be discussed with police. He added, delays do not constitute a safety risk.

GLEN EDEN

Ski Area

\$9 ...Lift Tickets



Special Spring Hours

8 am - 3 pm March 25 - April 7*

Yes, We Have Snow!

24 Hour Snowphone 878-8455
or call 878-5011

*WEATHER PERMITTING. BOOMERANG LIFT ONLY.

Owned & Operated by:
Halton Region
Conservation Authority
2596 Britannia Road West
R.R. #2 Milton, Ontario
L9T 2X6