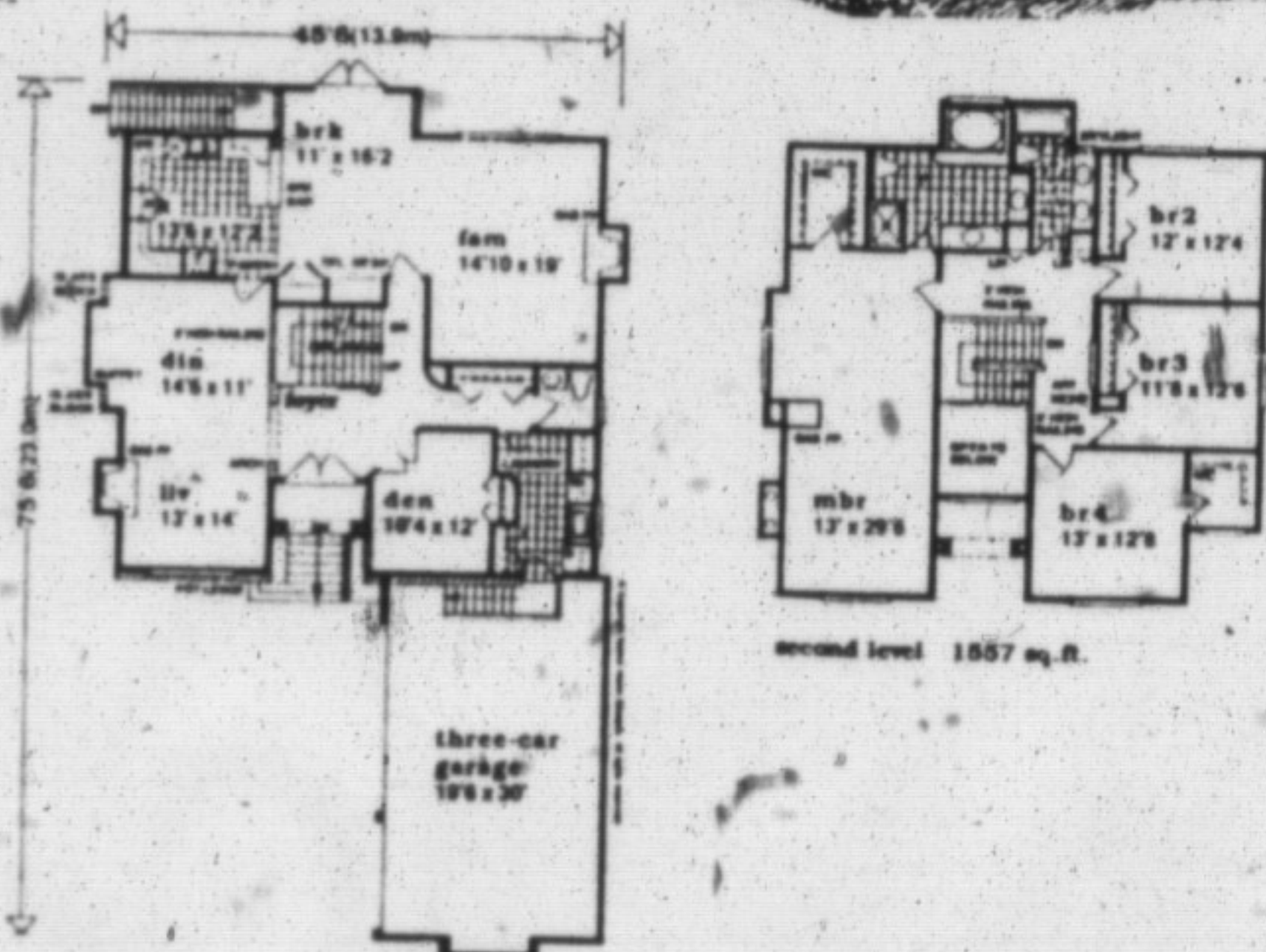




Plan No. 95-3207



DESIGN for LIVING Impressive Hillside Home

© Copyright
SELECT HOME DESIGNS

- Large and roomy four-bedroom contemporary offers plenty of space for the family on the go.
- Open plan living/dining room features glass block accents, archway entry from the two level foyer, and a gas fireplace for added warmth.
- Spacious kitchen, featuring a pantry, telephone desk and breakfast bar, opens to informal eating area, with double-door access to the rear deck.

Send for Canada's largest plan book with more than 500 home plans, including a wide variety of architectural styles from luxurious brick manors to affordable bungalows, only \$9.95 (including shipping and GST). To order using VISA or MasterCard, call toll-free 1-800-663-6739 or send cheque or money order to Design for Living, c/o The Canadian Champion, 382 West Broadway, Vancouver, B.C., V5Y 1R2. Trained consultants are standing by Monday to Saturday to take your order for the plan book, or to provide information about the plan featured in this column.



Wonderful Country Views

Only 30 mins. to Miss/Milton/Oakville
Beautiful 2 acre building lot with
200 ft. highway frontage
Between Acton and Ospringe on Hwy. 25.

Asking \$80,000.

MALCOLM JAMES
(519) 824-8858
HOME LIFE REALTY

COUNTRY PROPERTIES

- 99.5 ACRES of prime farmland with a restored Century Farmhouse and a good bank barn. has two road frontages, severance potential. Asking \$425,000.
 - 91.76 ACRES with income producing duplex, two irrigation ponds and systematically tilled. Ideal for market gardening. Asking \$399,000.
 - 74 ACRES vacant land abutting the village of Carlisle. Development potential. Asking \$325,000.
 - 32 ACRES with large cold storage building and barn, irrigation pond, two road frontages. Asking \$225,000.
 - 1.75 Acre hillside building lot with pond site. Asking only \$105,000.
- For more information on these and other country property in the Campbellville, Milton and Flamborough areas. Call Sylvia.



OPPORTUNITY KNOCKING • \$369,000

For the discriminating purchaser wanting the finest in location and quality, over 3000 sq. ft. of living area featuring separate formal rooms with fireplace, main fl. den, sunken main fl. family room with brick fireplace, dream kitchen with built in appliances and bayed eating area with cozy woodstove perfect for casual family living, 4 large bedrooms, plush master suite with amazing amenities. Situated on 2 landscaped acre +90 acres of common recreation land in the prestigious Ennisclaire Woods development.



Sylvia Bursey
Broker/Owner

Countrywide Campbellville Realty Inc.

Specializing in
Rural Property

854-2294



NEW HOME IN MOFFAT • \$279,000

To be built on a 1.75 acre hillside lot approx. 2200 sq. ft. featuring a covered porch, half round windows and an angled dbl. garage with an attractive window treatment gives this home an inviting look. Inside, the spacious foyer offers a view of the formal living room with fireplace, formal dining room, island kitchen and breakfast area. generous size sunken family room with fireplace. Between the upper-level master bedroom and the three secondary bedrooms is a balcony open to the family room below. 1-5 pc. 1-4 pc. & 1-2 pc. bath. Other models to choose from.

What's up with ceilings

Ceilings may be the high point of every room, but often the finishes they end up with are something of a decorating low point.

If you tend to think of ceilings as flat, level things it's because they usually are. They're cheaper to build that way.

But the number of ways you can dress up your ceiling are growing, from stained glass suspended ceilings to an attractive molded mineral-fibre tile with the look of molded plaster blocks, the choices are many.

Starscapes on bedroom and dining room ceilings disappear in the daytime, but glow in the dark. You can have constellations done in perfect detail, and they may be a good alternative to night lights for children.

Lightweight cornices and centrepieces imitate classic plaster styles to add an elegance to lofty ceilings. In the kitchen you can order custom-made stained glass suspended ceilings that

can transform a kitchen or bar area with a bright, modern look.

Wrought iron pot racks and old-fashioned clothes hangers with pulleys can age a kitchen immediately.

If you have a stucco ceiling you'd like to smooth out, there are products designed to take off the material - but only if it hasn't been painted.

FOR SALE MILTON, ONTARIO

- 3.3 acres
- C3-Highway Commercial
- Abutts Swiss Chalet, Harvey's, Tim Hortons, Canadian Tire, adjacent to McDonald's
- 60 foot sign allowance provides exposure to 401
- Hwy #25 and Market Drive
- Zoning allows a wide range of commercial/retail uses

For Information Contact:



Terry
Alexander
(905) 568-1990

Colliers Macaulay Nicolls (Ontario) Inc., Realtor

Countrywide 338-6550
TOWN CENTRE REALTY INC. 290 North Service Rd. W., Oakville

OPEN HOUSE SUNDAY FEBRUARY 25, 2-4



5556
FOURTH
LINE

\$219,900. Between Hwy #25 and Trafalgar South of Britannia. 3/4 acre, updated home and large workshop. Affordable country living. Allan Bain

Broker

Milton's

Best Homes

IAN OLIVER - Publisher

Advertising: Neil Oliver (Manager)

Real Estate Rep: Andrea Boyle

Published by The Canadian Champion,
191 Main St. E., Milton, Ont., L9T 4N9

878-2341 Fax: (905) 878-4943

Advertising is accepted on the condition that, in the event of a typographical error, that portion of the advertising space occupied by the erroneous item, together with a reasonable allowance for signature, will not be charged for, but the balance of the advertisement will be paid for at the applicable rate. The publisher reserves the right to categorize and reject advertising in the event of typographical error, advertising goods or services at the wrong price, goods or services may not be sold. Advertising is merely an offer to sell and may be withdrawn at any time. Produced on behalf of the Oakville, Milton and District Real Estate Board.

ROYAL LEPAGE

Royal LePage Real Estate Services Ltd.

338 Main St. E.
878-8101



PETRA
SCHWABE *BA
Sales Representative
878-8101



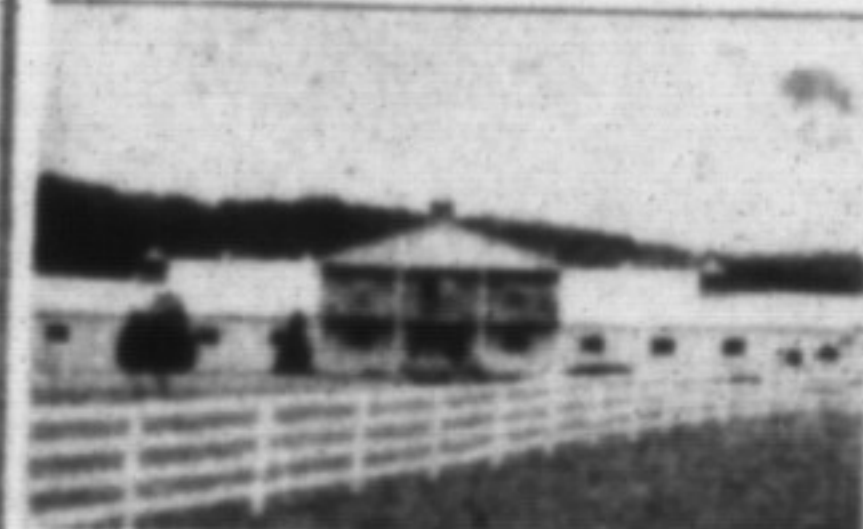
BED & BREAKFAST?

Home Business? Triplex? Endless possibilities! Unique century home in the hamlet of Campbellville with much of its original charm and character. 3 apts. & small comm. bldg. Excellent income. \$249,000.



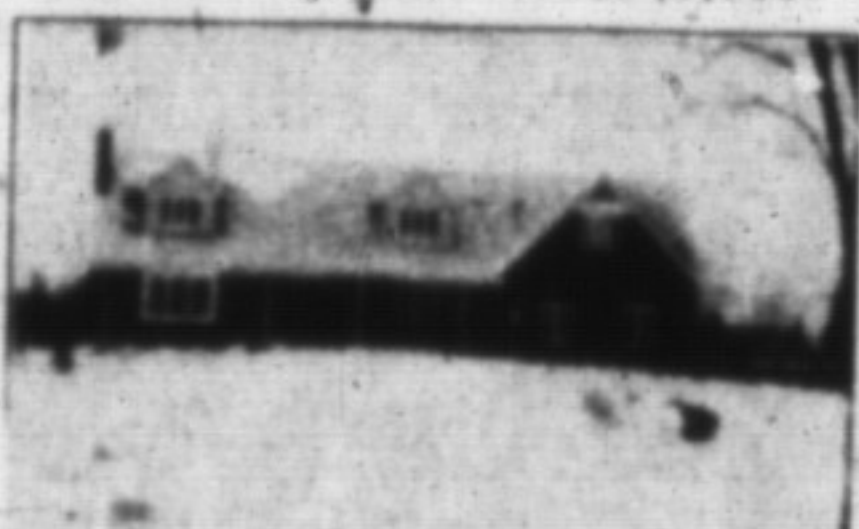
CENTURY HOME + 16 ACS.

Prime location just on the outskirts of Milton with beautiful views of the escarpment. Spacious 4 bedroom home requires some work. Good 16 acre property with stream.



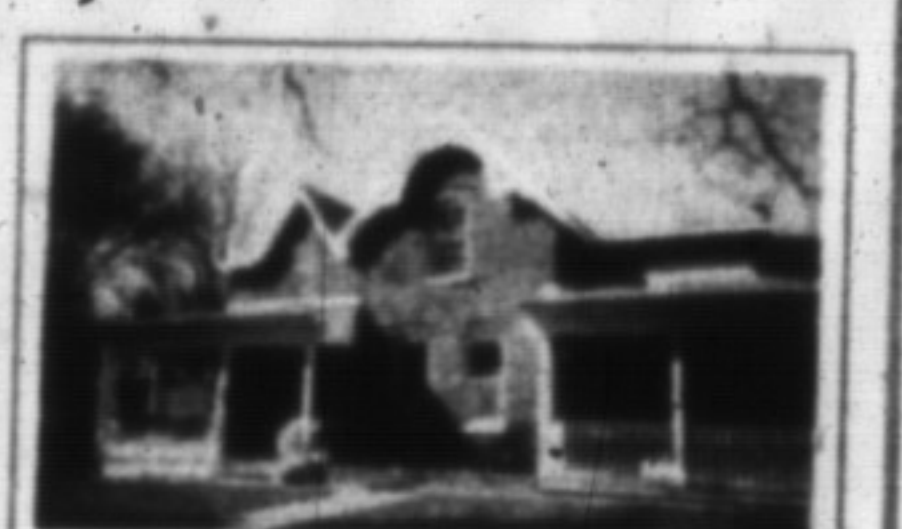
SUPERB HORSE FARM

Situated on the foothills of the Escarpment only minutes from highway 401. 31 stalls, arena, farmhouse, separate 2 bdrm. apt. A magnificent facility. \$729,000.



COUNTRY EXECUTIVE HOME

Beautiful Cape Cod custom-built by the vendor in 1994. Centre hall plan features beautiful kit./family rm., formal D.R., main floor den, inlaw suite over garage, 3 F.P.'s on 1-1/2 acre N. of Cville. \$415,000.



GORGEOUS CENTURY HOME

On a large lot only steps to downtown. Beautifully renovated & updated thruout. Currently used as a duplex with 2 spacious, 2 bdrm. apartments, 2 car garage, workshop & loft. \$279,000.