

Hopefully, birds of prey find phone poles homey

By **STEVE LEBLANC**
Special to The Champion

The osprey has a place to nest in town this spring thanks to efforts at Mountsberg Conservation Area.

In an effort to encourage nesting and habitation in the area, Mountsberg officials have installed a pair of osprey nesting platforms on top of telephone poles in the reservoir. The idea of the platforms, put in place two weeks ago, was initiated by Mountsberg education coordinator Jim Aikenhead.

Help for the project came from Milton Hydro, which supplied the staff and equipment for the installation.

"The osprey is a fish-eating bird that needs to be near water. Nesting sites for this bird of prey are far and few between in the area," said Mountsberg education instructor Debbie Jackson.

Each nesting platform can accommodate one nesting pair at a time. Mountsberg is considering adding a third platform in the near future.

The bird, also referred to as a fish eagle because of its diet, is fairly large — just slightly smaller than a turkey vulture, with a mostly white crown and brown body. While the nesting platforms are a good 50 feet out in the lake, the birds will be easily visible with a pair of binoculars.

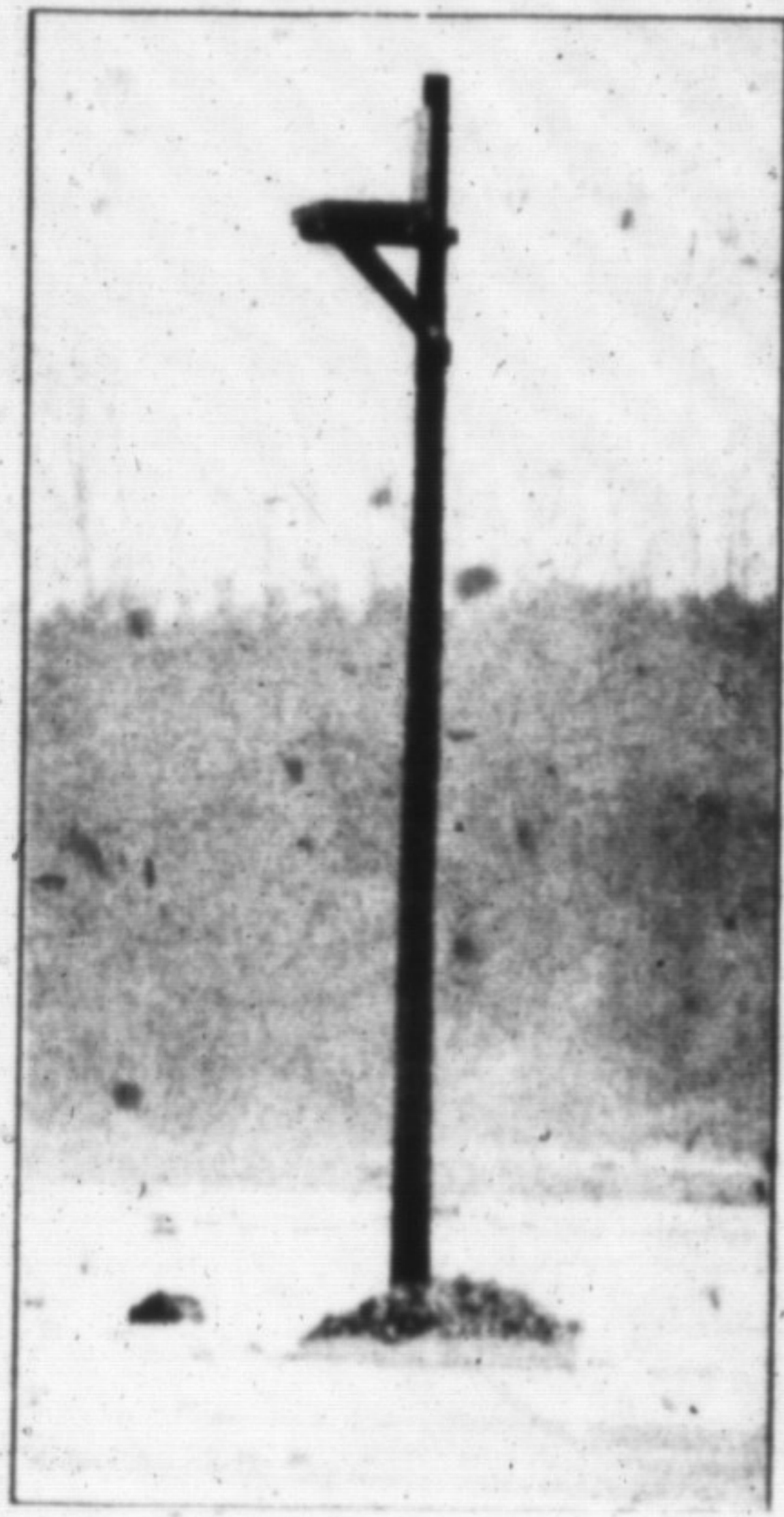
Ms Jackson said the osprey and their nesting area will now be included in all the conservation site's bird programs.

"These birds thrive in North America, but recent pollution has decreased their numbers. They're not an endangered species, but they're not exactly common either," she added.



Photos by GRAHAM PAINE

Debbie Jackson of Mountsberg watches for any signs of osprey after the conservation area erected nesting platforms (left) in the pond to attract the birds of prey. None have been spotted, but it's no surprise since they're not expected until spring.



RELIGIOUS SERVICE DIRECTORY

MILTON GOSPEL HALL
306 Ontario St. N.
878-2022

10:00 a.m.—Breaking Bread
11:45 a.m.—Sunday School
6:30 p.m.—Gospel Service

Wednesday 7:30 p.m.
Prayer Meeting and Bible Reading

"The blood of Jesus Christ his Son
cleanseth us from all sin."
1 John 1:7

BAHA'I FAITH
"UNITY"

"Universal Peace is a matter of great importance, but unity of conscience is essential; so that the foundation of this matter may become secure, its establishment firm and its edifice strong."
—from the Baha'i writings

Bi-weekly informal discussions
—everyone welcome—
THE BAHAI'S OF MILTON
Phone 878-4040
1-800-433-3284

KNOX PRESBYTERIAN CHURCH
170 Main Street E., Milton
Minister—The Rev. Rod Lewis
Diaconal Minister—Colleen Smith

LENT I
10:30 A.M.
SUNDAY WORSHIP
Nursery & Sunday School
For more information call:
878-6066
Parking on Mary Street

Wheelchair access and washrooms provided so that all may come and worship.

HOLY ROSARY ROMAN CATHOLIC PARISH
139 Martin St., Milton
878-6535
T.Y. 878-9044

Mass Times:
Saturday Evening 5:30 p.m.
Sunday 9 a.m., 10:30 a.m., noon

OUR LADY OF VICTORY Milton Heights
Mass at 10:30 a.m. Sunday

ST. PETER'S CHURCH
9th Line Trafalgar
Mass at 9:00 a.m. Sunday
Revs. Earl Talbot, Dave Wynen, Jim McSharry
"Come back to me"
We at Holy Rosary Parish ask our parishioners to participate in the World Day of Prayer at Knox Presbyterian Church at 7:30 p.m. on Friday, March 1st.

HOLY ROSARY ROMAN CATHOLIC PARISH invites you
to come home for lent.
We all need to change something.
Instead of the world,
let's start with ourselves

WHAT'S SPECIAL THIS WEEK?
Friday Feb. 23
Stations of the Cross at 7:00 pm
Small faith groups meet in the parish hall from 7:30 pm - 8:30 pm
All welcome

ST. PAUL'S UNITED CHURCH
123 Main St. at James
Milton, Ont.
878-8895

Rev. Robert Hyde
Rev. Elaine Longland
Director of Music—Judy Hunter

Sunday, Feb. 25, 1996
10:30 a.m.
LENT I
Morning Worship and Church School
Sermon Title:
WHY LENT?
Sacrament of Holy Communion
Nursery care available during service

Monday 7:30 pm - Church Council
St. Paul's Prayer Group - Thurs. 7:30 pm

Sanctuary is Wheelchair Accessible from James St. parking lot
A friendly welcome awaits you

GRACE ANGLICAN CHURCH
317 Main St. E., Milton
878-2411
Rev. Dr. Mark McDermott

SUNDAY SERVICES
8:00 a.m. & 10:30 a.m.

Infant and Toddlers Program
Church School

MIDWEEK
Tues. at 7:00 pm
Thurs. at 10:00 am
Adult Education
Tues. at 7:30 pm

Wheelchair access through parking lot doors
Call church office for transportation
—Everyone Welcome—



Boston Presbyterian Church
Third Line just North of Five Sideroad

SUNDAY WORSHIP
9:30 a.m.
Nursery & Church School
Minister
The Rev. Shawn Croll
Youth Group Leader
Donna Parsons

For further information call
875-2804

ST. GEORGE'S ANGLICAN CHURCH
Lowville
(Guelph Line, just north of Derry Rd.)

SUNDAY FEBRUARY 25
LENT I

8:30 am Morning Prayer
10:30 am Holy Communion
Contemporary Service in the auditorium
Sunday School and Nursery provided
7:00 pm Service of Prayer for Healing

Rector: The Reverend Charlie Masters
For further info. call the church office
878-1363

NEW LIFE PENTECOSTAL
6620 THIRD LINE, MILTON L9T 2X5
1/2 km South of intersection Derry & Thompson Rd.
Phone: (905) 878-3358
TTY: (905) 878-9354

Senior Pastor — Rev. Daniel Rogge
Deaf Church Pastor — Rev. John Graham
Youth Pastor — Rev. Bill Markham
Children's Director — Mrs. Natalie Rogge
Church Office — Miss Melodi Schwindt

SUNDAY, FEBRUARY 25, 1996
9:45 am
TRAINING IN TRUTH
Sunday School for all Ages

10:45 am
THE APPOINTMENT WITH GOD
Pastor Rogge continues the February Preaching series

Worship: *My Love Affair With God*
with the message entitled...
"WORSHIP: MORE THAN A SONG AND A DANCE"

NEW LIFE DEAF CHURCH (All ages welcome)
NURSERY CARE (Ages 0-2)
CHILDREN'S CHURCH (Ages 3-9)

6:30 pm
EVENING EVANGELISTIC RALLY

Pastor Markham speaking...
"WORSHIPPING THE LORD FROM ONE GENERATION TO ANOTHER"
KIDS' PRAISE (Grades 1-8)
KIDS' CLUB (Ages 3-5)
NURSERY CARE (Ages 0-2)

VALENTINE'S CANDLELIGHT CONCERT
Saturday, February 24, 1996 - 7:00 p.m.
Come and join us as we enjoy the music of Gospel Singer and Songwriter...



RHONDA SPURRELL
Join us for great music, dessert, and fellowship!
Tickets are still available at \$10.00 per person.
For tickets call Melodi today @ 878-3358.

"ENLARGE YOUR CIRCLE OF LOVE"

This Weekend 3328 BURNHAMTHORPE Saturday, 2-4



\$439,900
14.74 Acres. Fantastic bungalow, large kitchen, L/R with separate workshop with mezzanine and 12' x 12' roll up door. Additional work area, 31' x 19' with 10' x 10' roll up door, plus office area with reception, 4 horse stalls, loads of parking. Great opportunity! Call **GARY REED**.

Advantage Plus 844-4444

OPEN HOUSE DIRECTORY

SATURDAY 2-4 PM
567 Woodward Ave. \$162,900
Collin Stewart in attendance
NEW-ALL (95) REALTY/BETTER HOMES AND GARDENS® 878-4444

SUNDAY 2-4 PM
541 Churchill Ave. \$183,900
Francine Cross in attendance
NEW-ALL (95) REALTY/BETTER HOMES AND GARDENS® 878-4444

SUNDAY 2-4 PM
693 Laurier Ave. \$159,900
Doug Butson in attendance
NEW-ALL (95) REALTY/BETTER HOMES AND GARDENS® 878-4444

SUNDAY 2-4 PM
Unit 70-235 Bronte St., Milton \$122,900
Beverly Moreland in attendance
NEW-ALL (95) REALTY/BETTER HOMES AND GARDENS® 878-4444

SUNDAY 1-4 PM
9149 Dublin Line, Milton
(5 Sideroad West to Dublin North) \$249,900
Joan Taitre-Holmes in attendance
NEW-ALL (95) REALTY/BETTER HOMES AND GARDENS® 878-4444

SUNDAY 2-4 PM
16 King Street \$167,000
Doug Howden in attendance
RE/MAX MILTOWNE REALTY CORP 878-7777

SUNDAY 2-4 PM
235 Bronte #21 \$120,900
Sales Representative in attendance
RE/MAX MILTOWNE REALTY CORP 878-7777

SUNDAY 2-4 PM
322 Wilson Drive \$108,900
Sales Representative in attendance
RE/MAX MILTOWNE REALTY CORP 878-7777

SUNDAY 1-4 PM
8534 First Line, Campbellville
(C'ville Side Road W of Guelph Line to 1st Line S.)
\$314,900
Florence Walter in attendance
RE/MAX MILTOWNE REALTY CORP 878-7777

SUNDAY 1-4 PM
Lot 2 Briar Creek, Kildee
From \$388,000
Jean Snowden in attendance
RE/MAX MILTOWNE REALTY CORP 878-7777

SUNDAY 1-4 PM
Carriage Trail - Saddlewood, Kildee
From \$488,000
Glen Thomas in attendance
RE/MAX MILTOWNE REALTY CORP 878-7777

SUNDAY 2-4 PM
820 Childs Dr
\$234,900
Barb LaFleche in attendance
ROYAL LEPAGE REAL ESTATE SERVICES 878-8101