

USED CAR SPECIALS

1995 DODGE CARAVAN SE wgn., white	\$15,995
1995 DODGE CARAVAN SE wgn., blue	\$15,995
1995 PLYMOUTH NEON HILINE 4 dr., blue	\$12,995
1994 LEBARON GTC CONVERTIBLE 2 DR., SILVER	\$15,995
1994 JEEP YJ 2 dr., red	\$13,995
1993 DODGE SPIRIT 4 dr., blue	\$ 9,995
1993 JEEP GRAND WAGONEER 4 x 4 dr., blue/wdgm.	\$26,995
1993 PLYMOUTH VOYAGER LX AWD wagon, white	\$16,995
1993 PLYMOUTH VOYAGER SE wagon, blue	\$12,995
1993 PLYMOUTH VOYAGER wagon, green	\$13,595
1992 DODGE GRAND CARAVAN ES wagon, white	\$13,995
1992 DODGE GRAND CARAVAN ES wagon, white	\$13,995
1992 PLYMOUTH VOYAGER LE wagon, teal	\$12,995
1991 DODGE SHADOW 4 dr., white	\$ 5,995

PLYMOUTH
DODGE
TRUCKS
CHRYSLER

HUNT
PLYMOUTH CHRYSLER
500 BRONTE ST. MILTON
876-2580

SALES
LEASING
SERVICE
PARTS

A PROUD SUPPORTER OF LOCAL SPORTS ORGANIZATIONS

It's been exactly 30 years since Hood started officiating in NHL

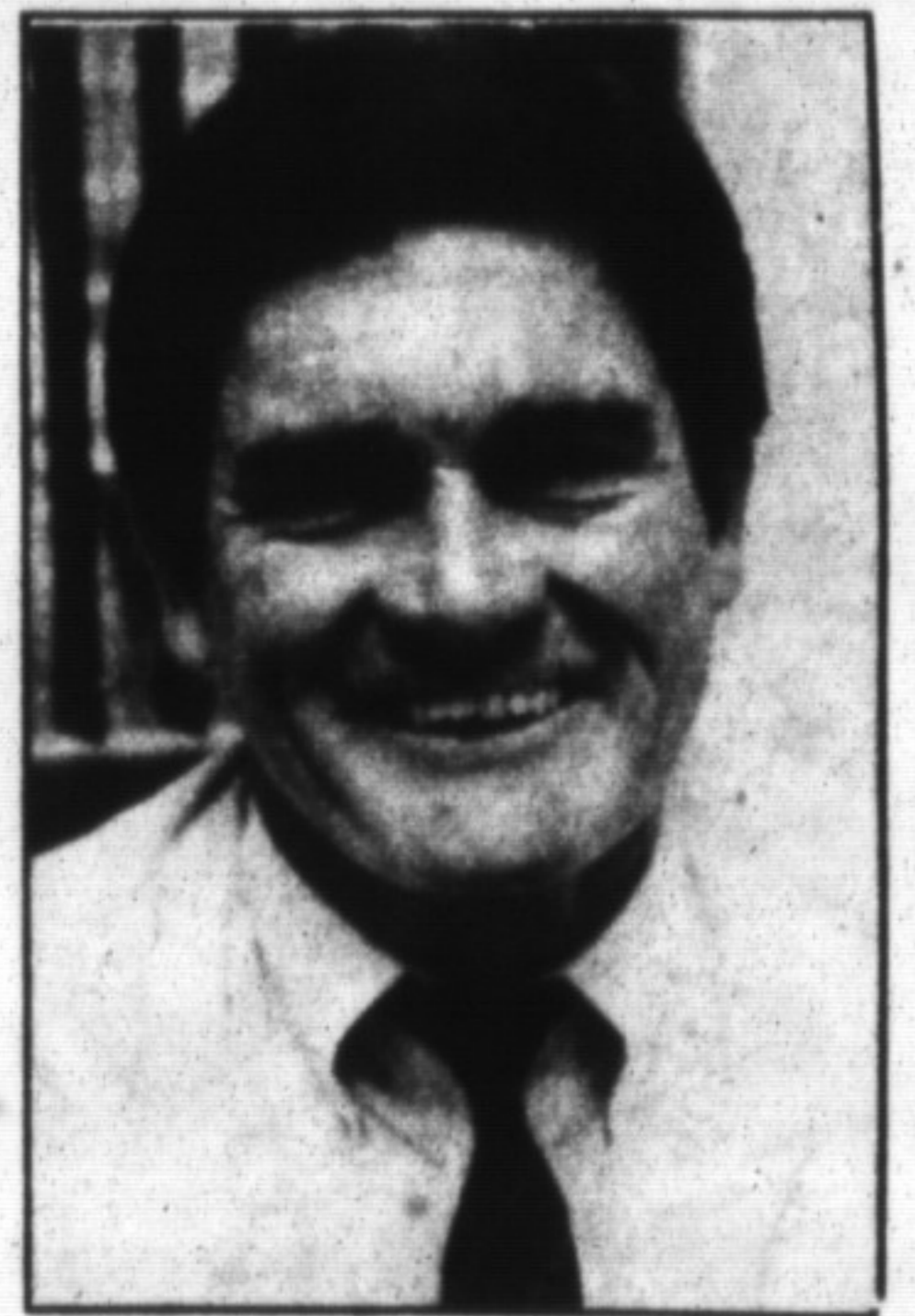
Today marks the 30th anniversary of Milton native Bruce Hood's debut as a National Hockey League (NHL) referee.

It was February 9, 1966 - the mid-way point of the 1966 NHL season - when referee-in-chief Scotty Morrison told Mr. Hood he was to referee a game between the Toronto Maple Leafs and the New York Rangers at Maple Leaf Gardens.

"The fact that my first game would be so close to home, in Toronto, only added to my enthusiasm," said Mr. Hood, who began his career when the NHL featured only six teams.

He admitted he was nervous before game time, believing "all 14,802 pairs of eyes were staring right at me." Fortunately for him, the game went smoothly with no fights and little pushing and shoving.

He received positive reviews from both his peers and the press, beginning his fruitful 21-year career on a good note.



Bruce Hood

PLAN TO MAKE LOW PAYMENTS. ASK HOW!

YOGI BEAR SAYS THERE'S NO BOO BOO'S ON THESE RANGERS




'93 RANGER SPLASH
6 cyl., 5 speed, power steering, power brakes, AM/FM cass. (Kenwood), aluminum wheels. ABS brakes, privacy glass, tonneau cover (cap not shown). Only 47,740 km's. Stk. #631A **\$285* month**



'93 RANGER XLT 4X4 RED
6 cylinder, power steering, power brakes, cruise/tilt, AM/FM cassette with compact disc player, power windows, power locks, aluminum rims, air. cond., privacy glass, ABS brakes. Stk. # 632A **\$314* month**



'93 RANGER SUPERCAB XLT
4.0L, 6 cylinder, 5 speed transmission, air conditioning, AM/FM cassette, power steering, power brakes, tinted glass, power remote mirrors, sport appearance pkg., aluminum wheels, color keyed cap, bedliner, ABS brakes, sport bucket seat. Only 33,334 km's Cayman Green, exterior, medium grey interior. Stk. # 628A **\$334* month**

ALL VEHICLES ARE CERTIFIED WITH WARRANTY & READY TO GO!

SEE THEM, DRIVE THEM, BUY THEM, ONLY AT



GALLINGER

FORD
LINCOLN
MERCURY

MOTORS LIMITED

655 MAIN STREET EAST, MILTON 875-3673



Monarch Basketball

"Sign Up for The Summer"
SUMMER LEAGUE

JULY, AUGUST
AGES 10 - 20
EVENING GAMES
E.C. DRURY
FEE \$70.⁰⁰

DAY CAMP
JULY 15TH - 19TH
AGES 8 - 16
FEE \$120.⁰⁰

BOYS & GIRLS
FIRST SIGN UP AT
MILTON MALL
FEB. 9TH & 10TH

For further information and registration forms call Pat and Martha Gleeson at
854-2714

JUST ARRIVED THIS WEEK'S SPECIALS

1993 MAXIMA • 1992 PONTIAC GRAND PRIX • 1991 MAXIMA

Call Willie for details.



NORTH END NISSAN

610 MARTIN ST.
MILTON

878-4137

BUILT FOR THE HUMAN RACE

ALL VEHICLES SOLD BACKED BY 34 YEARS EXPERIENCE.