

ROYAL LEPAGE REAL ESTATE SERVICES LTD.

ROYAL LEPAGE

Royal LePage Real Estate Services Ltd.

The Friendship of those we serve is the Foundation of our Progress. The opportunity to be of service to you is a most welcomed one.

*SALES REPRESENTATIVE **BROKER

ROYAL LEPAGE

Royal LePage Real Estate Services Ltd.



TERESA MILLS-HALL*
Sales Representative
878-8101



OUR PLACE

Is what you will be saying when you see this lovely country home. 1/2 acre lot, inground pool, family room, 2 fireplaces, finished basement and more! Teresa Mills-Hall*



ROSS RUNNALLS**
Associate Broker
878-8101



INVESTMENT



WATERFRONT

EXCEPTIONAL 10 ACRE WOODED LOT

35,000 sq. ft. industrial building. Fully leased. Good return. Upside potential. Vendor will finance.

Gorgeous 5 year old lakefront cottage. Vendor will finance at attractive rate. Make this your family retreat.

Exceptional 10 acre wooded lot near Campbellville. Lane, hydro and well installed. Vendor will assist with financing.



JOYCE HAGEVIK*
Sales Representative
"The name friends & neighbours recommend."



A WINNER

\$159,900

Close to schools - backs onto parkland - spacious bedrooms - many upgrades - central air - finished rec. room with office - some hardwood - newish carpets - a great buy.



BARB LAFLECHE*
Sales Representative
878-8101

Presenting two outstanding properties



YOU'LL LOVE THE VERY NATURE OF IT!

5 ACRES



A PLACE TO HANG YOUR HEART - \$179,900

Spacious, well constructed Tudor style home is located on a beautifully wooded lot just minutes from town and the 401. It offers a formal LR and DR, outstanding 2 storey FR with full windows, Rankin the FP, dream Eurostyle kitchen, den, and large main floor office. Enjoy the seasons from the 2 sunrooms and the rear deck. A rare "country" find! \$499,000

In town country charm is evident throughout this spacious 4 BR home! The newer oak kitchen offers cupboards galore & a pantry and opens onto the MR family room. A convenient mud room & walk in pantry closet is nearby. Lower level is finished and includes a 3 pc. bath. Upgraded carpets, french doors and warm decor adds to the appeal. Set on a tree lined near schools & backs onto parkland.

ROYAL LEPAGE
Aim Higher.™

THE COUNTRY CORNER
INGE WINTHER 878-8101
Specializing in Country Properties for 23 years

ROYAL LEPAGE
Aim Higher.™



SECLUDED ESCARPMENT ESTATE
Beautiful Victorian manor, nestled on manicured grounds with mature trees, coach house & barn on 98 partly wooded acres & featuring: The traditional centre hall, FPs in living room, dining room & family room, 5 bedrooms, etc. Reduced to \$730,000. B17P510



BUTTERNUT HILL (1861)
A Napier Simpson restored Canadiana with large newer wing set in a park-like setting with pool, cabana and barn. 91 scenic acres backing onto conservation woodlands just outside Campbellville. \$599,000. B3P536



"TALLWOOD" CIRCA 1850
Beautifully restored & decorated Ontario stone house with large stone wing. Nestled on prof. landscaped grounds with wooded ravines, pool, stream and large creek on 49 secluded acres. Guest cabin & 1824 stone barn. \$660,000. B8P527



STUNNING BRAN HAVEN ESTATE
Nestled on prof. landscaped 3.56 acres, with mature trees, pool, hot tub & sep. guest cottage with loft & garage. The main house features the traditional center hall, fireplaces in living room, family room & master bdrm. Sep. dining rm., library, solarium, den & rec. rm., \$650,000. B32P529RW



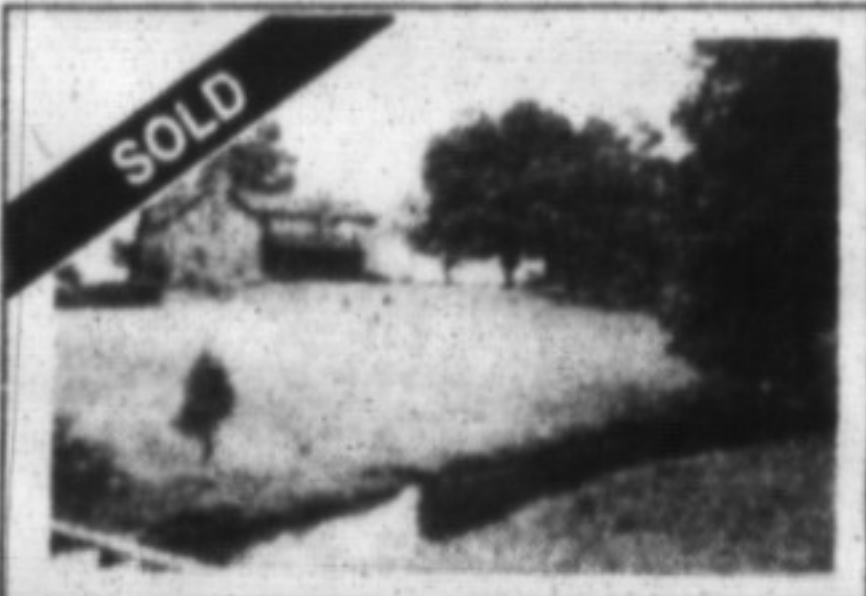
PRESTIGIOUS GEORGIAN ESTATE
Set majestically on secluded 2 ac. lot beautifully landscaped with mature trees & pool & featuring F/Ps in living rm. & family rm., sep. dining rm., library, kitchen with centre island & French doors to deck, 4 large bdrms. \$549,000. C25P566



SCENIC NASSAGAWEYA HOMESTEAD
Carefully restored Canadiana (circa 1843) with large new addition & coach house. Set in a beautiful garden setting on 109 scenic acres with pool, pond & picturesque stone barn. 60 acres of bush with riding trails. \$589,000. B10C5P524



"ROCKHILL FARM" CIRCA 1853
Beautifully restored Ontario house set on a hilltop location overlooking pond, creek & valley on 50 scenic acres. Featuring lrg. rooms throughout, Limestone FP, pine floors & trim, picturesque Bank barn & 4 car drive shed. \$399,000. B12P558



MAPLEGATE FARM
\$549,000 - Carefully restored 1869 Ontario House with large wing set on manicured grounds with mature maples, 2 large ponds, stream and pool, 2-bedroom bungalow for staff, stable, 72 partly wooded acres. B3P537



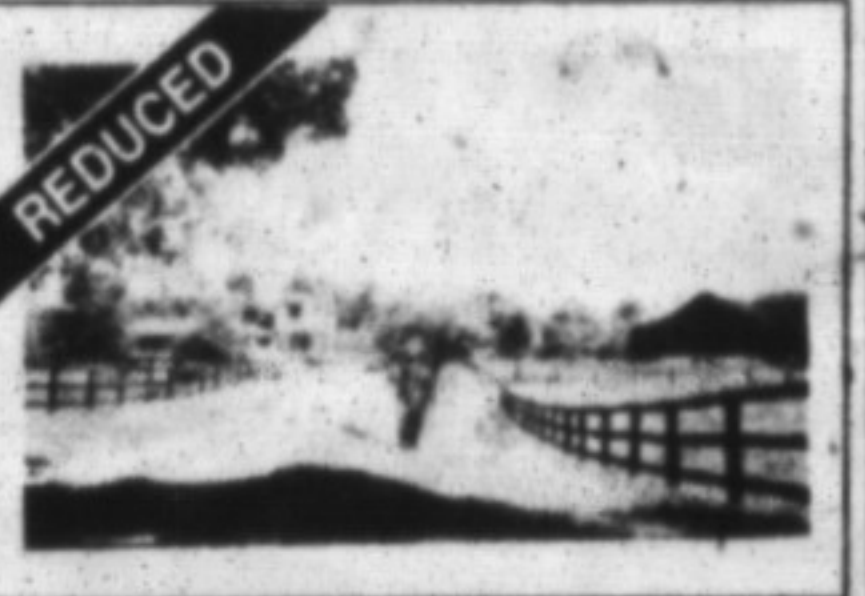
"KESBURN WOODS"
Gracious 12 room Tudor estate nestled on a spectacular 5 ac. lot, beautifully wooded with mixture of mature trees & featuring: The traditional centre hall & large principal rooms, sep. 3 car garage, etc. Min. from 401. \$399,000. B13P527



EXCLUSIVE MACARTHUR DRIVE
Gorgeous executive rancher nestled on a spectacular 5 acre wooded ravine lot, beautifully landscaped with patio, decks, hot tub & cabana & featuring lrg. principal rms., cathedral ceilings, skylights, 3 FPs, excellent Campbellville location. \$399,000. B22P535



HALTON HILL FARM
Classic turn-of-the-century Victorian nestled in an old English garden setting with mature maples, small cabin, sep. garage & barn with boxstalls. All on 75 scenic acres with ponds & stream. 5 min. from 401 Hwy. & Trafalgar Rd. Overlooking escarpment. \$530,000. C25P570



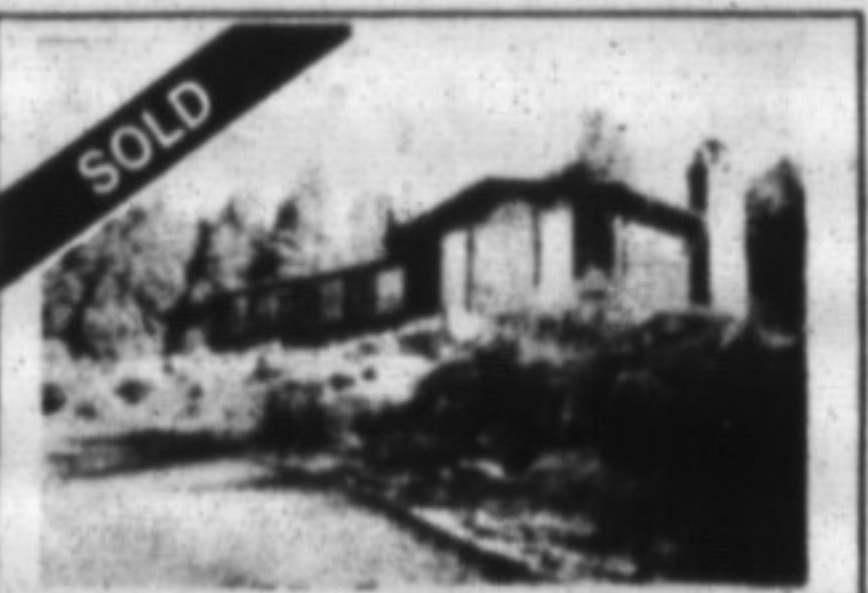
ONTARIO STONE HOUSE (1875)
Nestled on a secluded 17 acre lot with mature maples, stream & pond. This Canadiana features a beautiful great rm with stone FP, large new kit. with centre island, fam. rm. & 4 bdrms. Excellent barn with 9 box stalls & pad-docks. \$345,000. B26P517



"THE SHIELING" (CIRCA 1890)
\$329,000. Quaint Canadiana with large addition nestled on a breathtaking 50 ac. lot with 30 ac. of original forest with stream and trails. A century log barn and separate 2 car garage. Campbellville. B8P528



SPECTACULAR COUNTRY RETREAT
This unique home sits on 4.59 ac. of beautiful woodlands with pond & stream and featuring partly open concept with cathedral ceilings, skylights, French doors, lrg. windows, 4 sided fireplace, hardwood floors, etc. \$379,000. B14P513



STUNNING COUNTRY PROPERTY
Charming rancher nestled very private & secluded on a partly wooded Muskoka-like 13.72 acres with stream, spring-fed pond, pool & small guest cottage. Featuring cathedral ceilings, large picture window & fireplace. \$289,000. B22P532



"RUMLEIGH FARM" CIRCA 1860
Charming Ontario stone house w/ orig. stone wing nestled on manicured grounds w/ mature trees, pool & small barn on 24.5 spectacular escarpment ac. with pond & bush. Beautifully restored with orig. pine floors & trim. Campbellville location. \$495,000. C27P517



ENNISCLARE WOODS
Set majestically on prof. landscaped 2.67 acres with large pool, hot tub & cabana. This historic replica features 5,400 sq. ft. of luxury living with all the traditional ambience of yesterday. Numerous features & details. Property surrounded by spectacular woodlands. \$899,000. B26P512



THE LENNON HOMESTEAD (1859)
Charming restored Ontario stone house with original stone wing nestled on landscaped grounds with pool, separate garage & barn on 37 scenic acres with pond & stream. The house has large principal rooms & centre hall. \$495,000. B4P543