

RE/MAX THE REAL ESTATE SUPERSTARS

878-7777 22 Ontario St. S.
INDEPENDENTLY OWNED AND OPERATED



RE7—The Canadian Champion, Wednesday, January 17, 1996



SCOTT B. PRIOR

associate BROKER
(905) 878-7777 TOR (905) 825-4485

THIS ONE'S A WINNER!



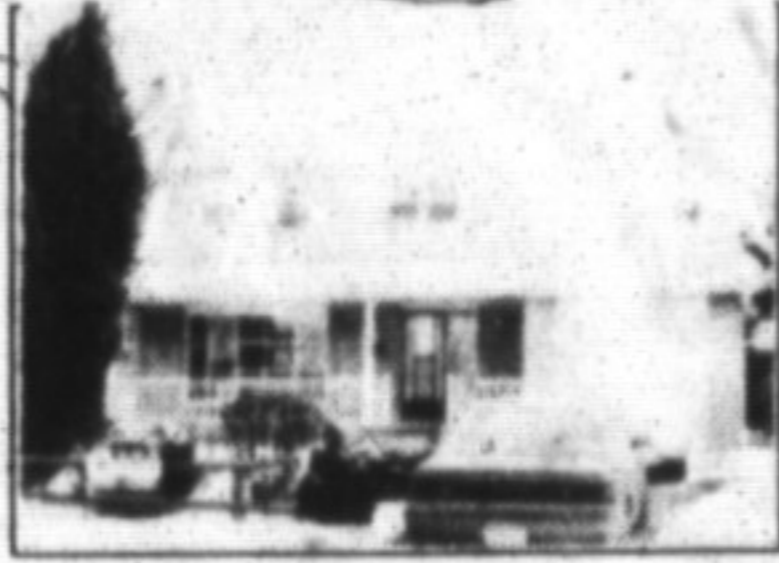
Set on a large, private lot on a quiet crescent, this home features a renovated kitchen with walkout, expanded main bath with jacuzzi tub and a finished basement with 3 piece bath and economical gas heating with central air conditioning. Offered at \$178,900.

MAKE AN OFFER!



On this 3 bedroom semi-detached home located in desirable, older Milton. This home has been freshly decorated throughout and features as upgraded kitchen and a nicely finished basement with 3 piece bath and recreation room with fireplace. Reduced to \$149,900.

LIGHT YOUR FIRE



In the new marble fireplace found in the living room of this well maintained, 4 bedroom family home. This property features hardwood flooring in the living room & dining room, ceramic flooring in the entry hall, recreation room with fireplace and a newly fenced backyard with 20' x 40' in-ground pool. Reduced to \$194,900.



Glen Thomas
Sales Representative
Res. 876-0987
878-7777



DON'T EVEN THINK ABOUT USING ANOTHER REALTOR!

Because you'll miss out on the Re/Max 'Top Dog' Service.



Gary Thomas
Broker/Owner
Res. 875-3700
878-7777

FARMLAND

40 acres, stream, bush.
Absolutely gorgeous
Only \$249,500.

IRRESISTIBLE

As you enter this townhouse prepare to be impressed. Beautiful broadloom, granite, oak, ceiling, nice kitchen & for the buy. Come see this one.
\$125,900

SOLD



SIMPOOL PLEASURES
Time to realize what you're missing. Lovely 4 bedroom home in mature area of town. Well laid out & well maintained. Beautiful gardens accent a stunning indoor pool. Ideal for the all year swimmer. Glass solarium, very impressive.
\$247,500



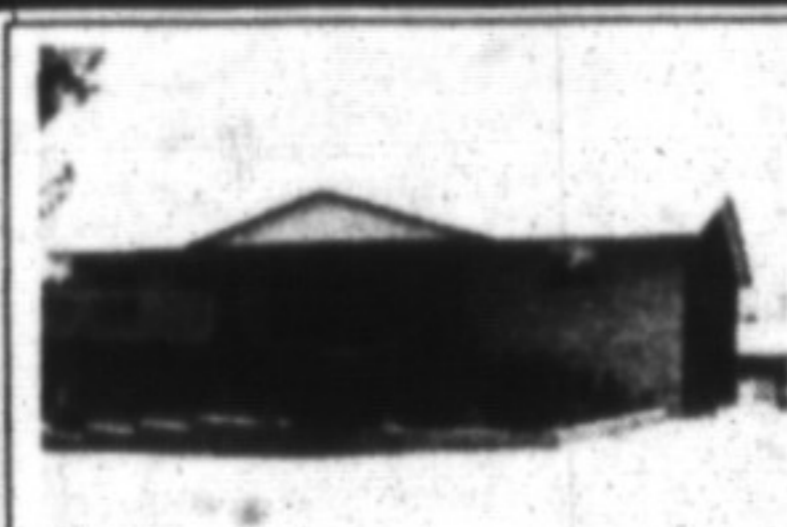
IMPRESSIVE HISTORIC PROPERTY
Ideal downtown property that stretches through to Mary St. 2 storeys, 2 apartment, and a separate detached house. Nice property, nice income.
\$329,000



KILBRIDE IS KING
A well kept secret indeed. The new Brar Creek subdivision by Branhaven is ideal for many Milton folks who want estate privacy. Gorgeous 2+ acre lots right in a quiet village only minutes from Milton. It certainly is lifestyle change worth exploring. Homes from 2,000 sq. ft. up to 3500 sq. ft. From
\$369,000



5% DOWN - UNBEATABLE
You're better off to buy something as attractive as this than throw money away. Outstanding townhome featuring 3 bedrooms, newer carpeting, upgraded kitchen flooring. All for only
\$118,900



HANG SADDLE HERE
Time to think country. We have an ideal setup here. 18 acres of land, over 5 cleared. Horse stalls & well finished home. Truly a country retreat and not too far away. Just N. of town. \$277,500.



SIMPLY MAJESTIC
If luxury is your fancy, then you'll find it here. Gorgeous home on beautiful lot in popular Chelsea Road Estate subdivision. This home will pass the grade in every way.
\$759,000



KATRINA WALTON

Sales Representative
Office 878-7777
Res. 878-1588
Tor. Line 825-4485

RE/MAX LAND FOR SALE

VACANT LAND

25 acres of the prettiest property available now. Just north of Burns conservation area, this property has all the elements for the nature lover. 500 foot frontage. Asking



Don't wait. Call RE/MAX first.

Milton's #1 Real Estate Company
For years & years & years



ANNE TAYLOR

Associate Broker
Town & Country

REGISTERED RELOCATION SPECIALIST
854-9833
Tor.: 825-4485
Pager: 878-7777

STONE FARM - POS - \$329,000



Diamond in the rough! Large stone centre-hall, four bedroom, double staircases. Redone large bank barn, 125 gorgeous acres with 80 arable, 30 bush, stream & large pond. Structurally sound - needs modernising.

STANDARD BRED HORSE FARM \$274,900



Fully set up private training centre. 4 bedroom modern home, 11 stall barn with wash stall, track, 30 acres. Cayuga location. This property and price cannot be found locally. Travel a little and just move right in.

JUST ADD YOUR OWN TOUCH \$319,000



Contemporary home with many unusual design features - octagonal living room and master bedrooms with fireplaces, two story entrance, large studio could be in-law suite, main floor den. Set on 2 lovely wooded acres and adjacent to pond for fishing and skating.

COUNTRY HOME CLOSE TO TOWN \$259,900



Soak in the hot tub overlooking farm lands. Sunbathe on the deck, cool off in the pool. Highly upgraded home with new gas furnace, new windows, Florida room, main floor den. All on just under an acre close to Milton and Kilbride.

GET A JUMP ON SPRING!

I have a number of choice building lots for your dream home. Start planning now to build later.

ATTENTION MILTON!

All my in-town listings have sold. Looking for Spring inventory, if you are thinking of moving call me and see what I have to offer.

DON'T GAMBLE ON YOUR REAL ESTATE REPRESENTATIVE CHOOSE A PROVEN PROFESSIONAL - 16 YEARS WITH MILTON'S #1 COMPANY

DEAL YOURSELF A GREAT HAND! Set in a small complex convenient to schools, shopping & medical facilities, this attractive home has a new bathroom, upgraded floor, rec room, sep. dining room, central air, fans & private backyard for summer barbecues. Early possession possible. Call me for full details \$118,500



ODDS ON FAVOURITE
It features 3 big bedrooms, 3 bathrooms, rec room, office, upgraded windows, new carpets, double drive and more. Just move in and enjoy.

THINKING OF MOVING?
Call Jean for a pressure-free chat about current real estate trends or listings for other areas.



NO ROLL OF THE DICE!
Just minutes from town under escarpment protection this attractive open concept home has a giant family room with stone F.P., den, big, bright master bedroom opening to balcony, workshop, jacuzzi, skylights, hardwood, double garage, pretty 1/2 acre with pool & country views. \$236,900.

A HOT TIP... This pretty home in village setting won't last long at \$156,900 recently renovated with new flooring, doors, windows, big deck, woodstove, just minutes from Milton. Call me for directions - REPEAT ONLY \$156,900



FULL HOUSE!
All finished with large rec room, 4th bedroom, 2 bathrooms & many upgrades including windows, mouldings, railings, hardwood floor & walkout to good sized lot. This could be your "good Deal". Just listed \$169,900

RE/MAX RE/MAX RE/MAX RE/MAX RE/MAX RE/MAX RE/MAX RE/MAX

AL VOLPE

Sales Representative

878-7777



COUNTRY ESTATE \$334,900

Nestled on 2 acres close to James Snow Parkway, Milton. Home features 4 bedrooms, 4 baths, 3 car garage, all brick and built with the finest materials. Ideal location from Milton and surrounding areas. Please call for more info or feature sheet.

- 3 br. bungalow on 1 acre \$189,900 just mi. out of Milton
- 3 br. in town with in-law suite \$169,900



LOCATION, LOCATION! LOCATION \$229,900

Large brick bungalow close to Milton & Burlington. Home features 4+1 Bdrm. Full basement, F.P., air cond., gas furnace, in-law suite above garage. 2 car driveway recently paved & much more.

\$129,900 IN MILTON

2 Bedroom home in older part of town. Full size lot in move-in condition.



HEATHER ASHBEЕ

Sales Representative

Office: 878-7777
Residence: 875-4698
Toronto Line: 825-4485

CIRCA 1850 \$274,900



\$258,000
Nestled on beautifully treed ravine lot. Quaint Ontario house with traditional front verandah with gingerbread trim, oak & pine floors, oversized F.P. in sunken L.R. Large separate D.R., lots of character.
\$254,900.

WELCOME TO COUNTRY LANE HOMES \$388,000



Welcome to country Lane Homes in the hamlet of Moffat. An estate subdivision with only 14 lots approx. 1.48 acres each. This model has 3 garages, kitchen, wrap-around verandah. Other plans available including some bungalows from \$254,900.

BRITANNIA ROAD \$388,000



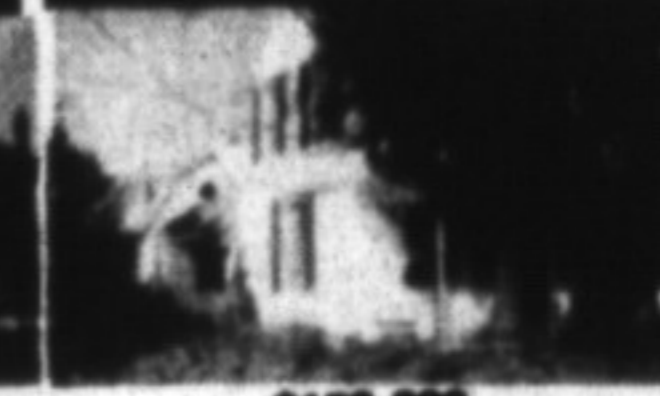
Custom home, solid oak doors & trim, hardwood floors throughout. Spacious rooms, neutral decor on mature tree lot (approx. 3/4 ac.) Super location close to Go. Mississauga, Milton & Oakville.

COUNTRY EXEC. \$388,000



Top of the line, beautifully maintained & upgraded in estate subdivision. Lot is approx. 1.64 acs. Hwd. floors & trim throughout, gorgeous gourmet kit, solid bleached oak cabinets are just some of the features of this home.

CENTURY HOME \$198,000



\$20,000 of landscaping. English country garden with pond surround this charming home. Original pine floors in L.R., wide baseboards. Skylights, garage/workshop. Lot size 1.38 acres. A great buy at this price.

LOTS FOR SALE BROOKVILLE ESTATES

Approx. 1.6 acres from \$82,500
COUNTRY LANE ESTATES
Approx. 1.48 acres \$129,900
DUFF HOUSE ESTATES
Approx. 4 acres - \$145,000
TOWN LINE
Spayside
Reduced \$129,000

RE/MAX RE/MAX RE/MAX RE/MAX RE/MAX RE/MAX RE/MAX RE/MAX