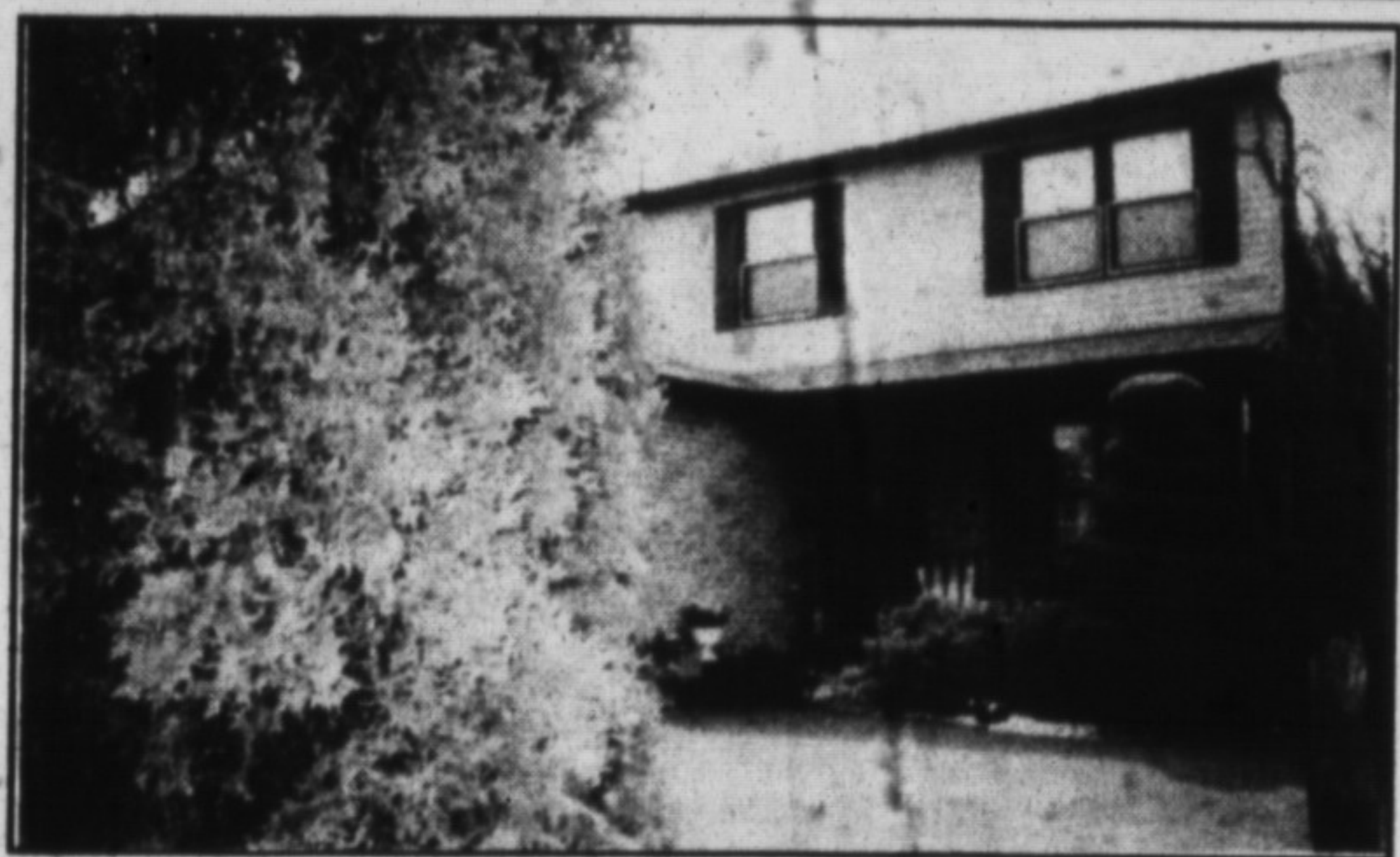


The Canadian Champion

# Best Homes



**\$ 209,900**

**RE/MAX**

**GREAT REDUCTION OF** a large executive home with many extras. Hardwood floors, new broadloom, professionally landscaped.

**RE/MAX MILTOWNE REALTY CORP.**  
**CAROLE D. BUDWORTH — 878-7777**



**\$184,900**

**ROYAL LEPAGE**

**MINT CONDITION** from top to bottom. Very spacious for the growing family. Four bedrooms, eat-in kitchen, sliding glass doors to deck, 2 wash-rooms, finished rec. room and several extras & upgrades on 50' x 128' lot.

**ROYAL LEPAGE REAL ESTATE SERVICES LTD.**  
**EVA GOODING — 878-8101**

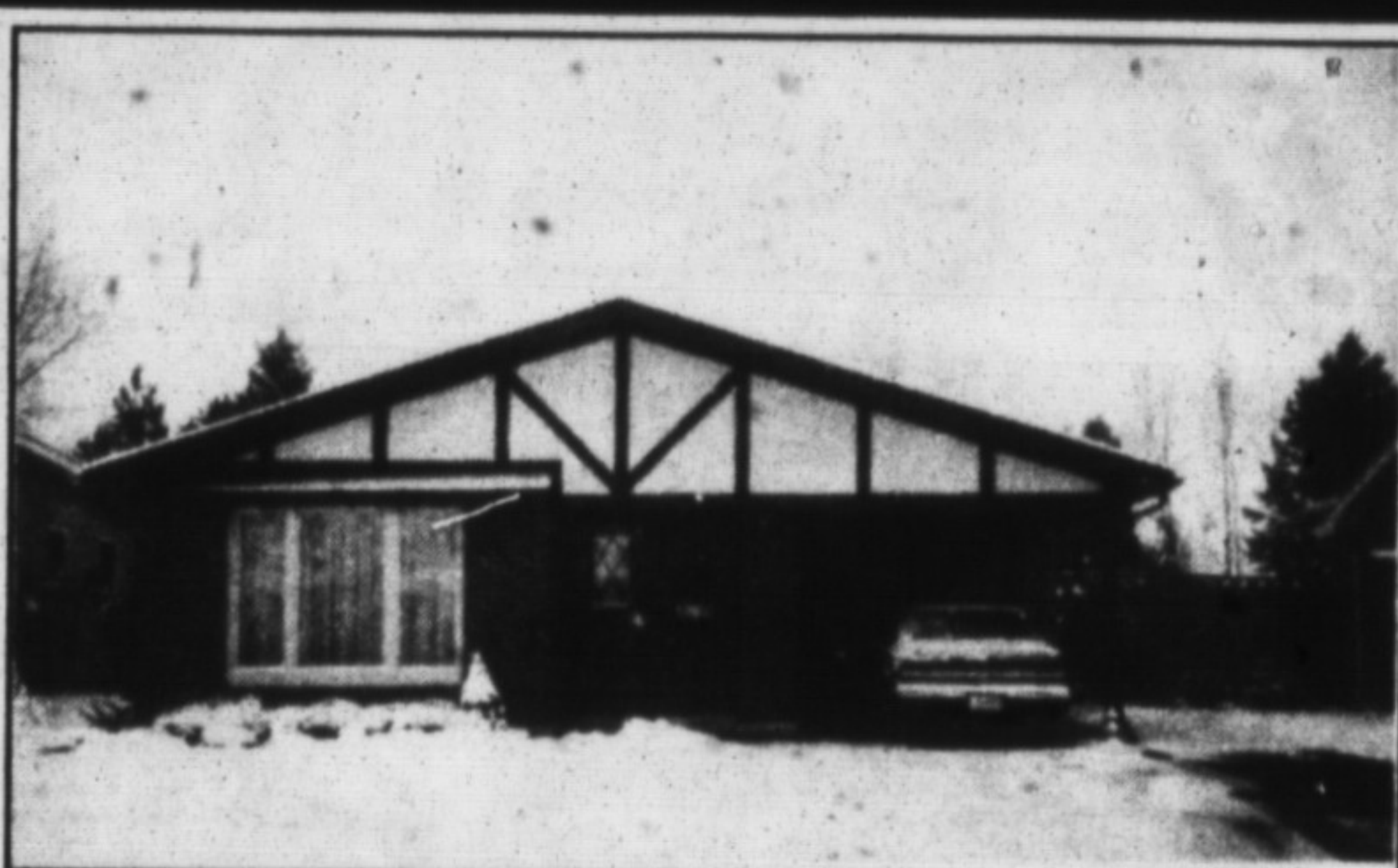


**\$199,900**

**REALTY WORLD**

**AFFORDABLE COUNTRY** - Attractive three-bedroom sidesplit comes complete with a bright, cheery kitchen, separate dining room, very large master bedroom with a walkout to deck. For your appointment to view #138, call:

**REALTY WORLD (W. J. McCRUDDEN) REAL ESTATE**  
**WAYNE CASSON 876-1133**



**\$184,900**

**ADVANTAGE PLUS REALTY INC.**

**SORRY MOLLY** - You've been "Maid" obsolete. This immaculate 3 bedroom backsplitted has huge eat-in kitchen, big L-shaped family room, in-ground pool PLUS GRASS! Don't miss out on this exceptional home, it won't last long.

**ADVANTAGE PLUS NEWELL REALTY INC.**  
**CHRIS NEWELL 878-4444**



**\$193,900**

**RE/MAX**

**YOUR CHRISTMAS GIFT** - Still time to afford this completely finished bungalow, with fireplace, eat-in kitchen, 2 baths, large dining room & living room, lovely patio for spring barbecues, centrally located downtown.

**RE/MAX MILTOWNE REALTY CORP.**  
**BETTY INGLE — 878-7777**



**\$439,900**

**RE/MAX**

**WINTER WONDERLAND** - This unique custom-built 3,500 sq. ft. home is found in a magnificent setting on more than 25 acres of treed, rolling land, located only minutes from Milton and features five bedrooms, 4 baths, main-floor family room plus a separate guest house/studio.

**RE/MAX MILTOWNE REALTY CORP.**  
**SCOTT B. PRIOR — 878-7777**