

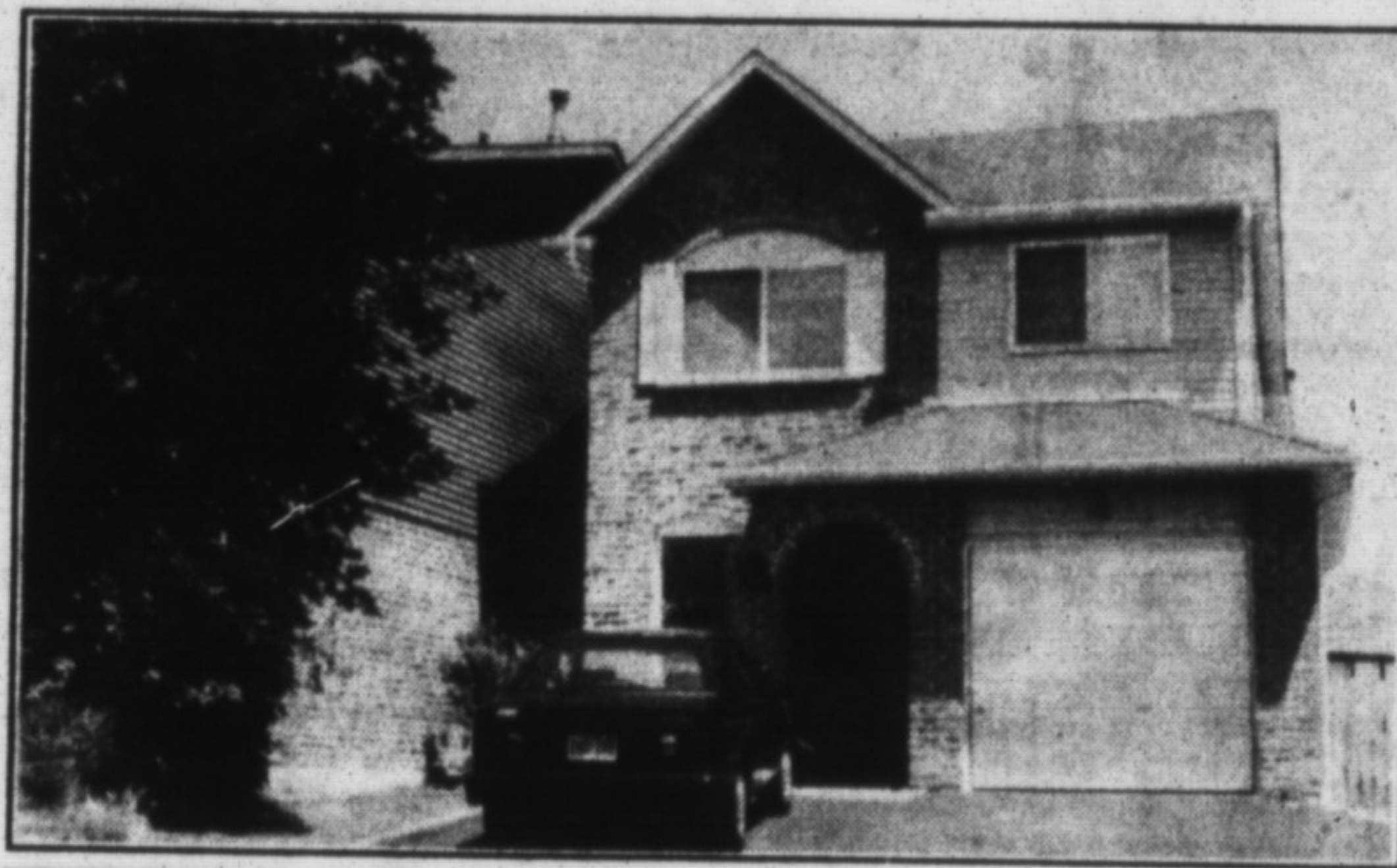
The Canadian Champion

Best Homes

MILTON, ONTARIO

978-2347

OCTOBER 26, 1994



\$ 174,900

ADVANTAGE PLUS REALTY INC.

EXCELLENT SIZE BEDROOMS - Separate dining room for those formal occasions. You should make the effort to see this one. Please ask for Stewart Haddon.

ADVANTAGE PLUS NEWELL REALTY INC.
STEWART HADDON - 878-4444



\$349,000 REALTY WORLD

CAMPBELLVILLE ESTATES- In a beautiful, prestigious area, close to rejuvenated downtown. 4 bedroom bungalow, main floor laundry and family room, large foyer, sunken living room with fireplace, circular drive, flagstone walk and much more. For your personal viewing of #120 call:

REALTY WORLD W.J. McCRUDDEN REAL ESTATE
JENNIE FRETZ - 876-1133

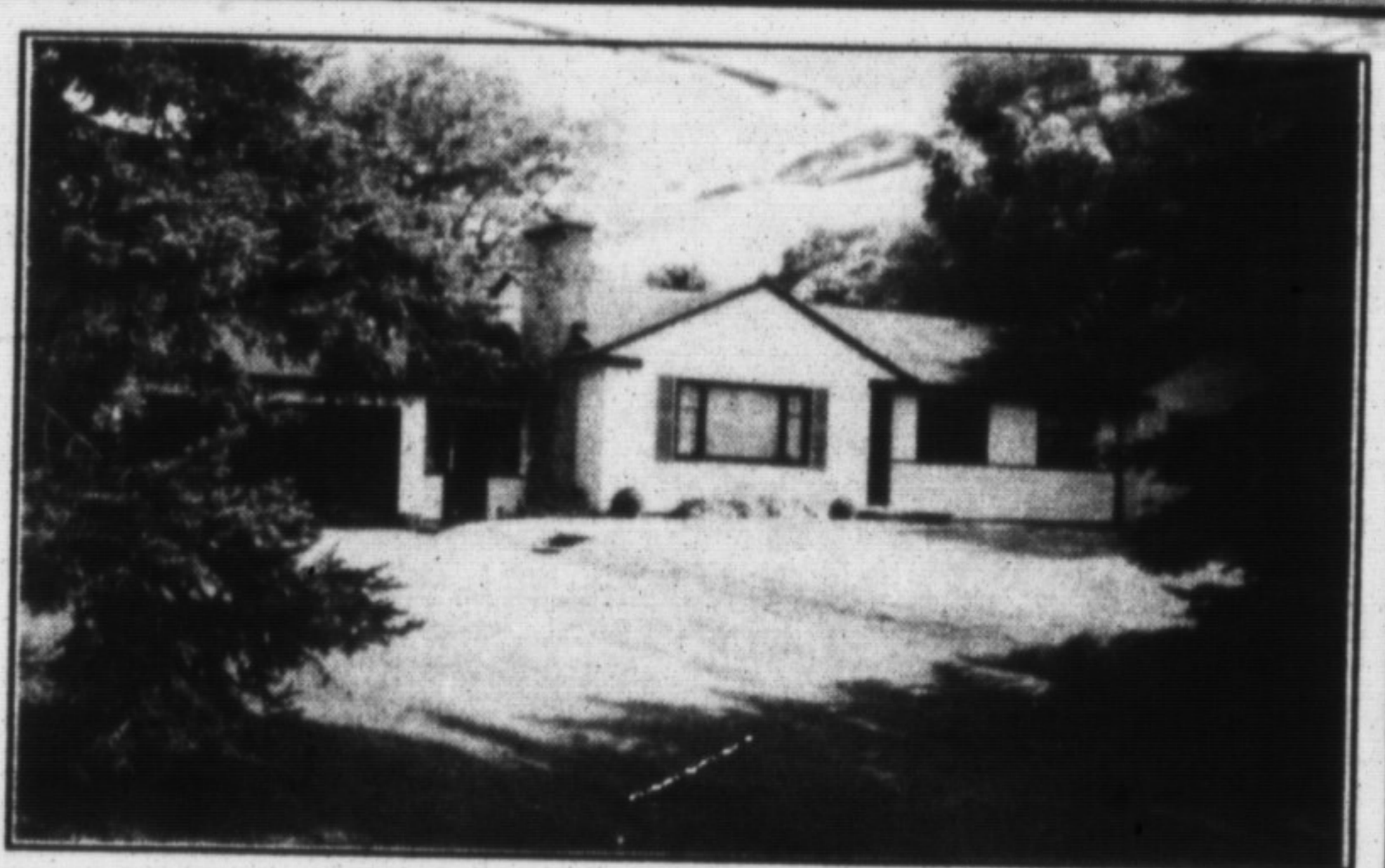


\$209,000

RE/MAX

GORGEOUS 1/2 ACRE LOT with mature trees surrounds this character home with large master bedroom, family room opening onto two tier deck, fireplace, central vacuum & air, plus workshop with sep. outside entrance & oversized drive-through garage.

RE/MAX MILTOWNE REALTY CORP.
JEAN SNOWDEN - 878-7777



\$289,900

RE/MAX

PEACEFUL AND SERENE describes this exceptional setting at the west edge of town with a sprawling 4 bedroom bungalow with expanded oak kitchen with walkout to private deck and spa. Additional comforts include separate dining room, living room with fireplace, main floor den and central air. Uniquely set on 2 acres with town water.

RE/MAX MILTOWNE REALTY CORP.
MIKE MORGAN - 878-7777



\$229,900

ROYAL LEPAGE

This well-maintained executive home features 4 large bedrooms, full ensuite to the master bedroom, large eat-in kitchen overlooking family room with fireplace, large nicely landscaped lot. \$229,900. Call Sandi Kinsale to inspect this winner.

ROYAL LEPAGE REAL ESTATE SERVICES LTD.
SANDI KINSALE, 878-8101



\$349,000

ROYAL LEPAGE

BEAUTIFUL WOODLAND SETTING. Custom-built brick bungalow with all the "bells & whistles". Features large living room with f/p, sunroom, walk-out lower level, 32' x 40' barn and much more. \$349,000.

ROYAL LEPAGE REAL ESTATE SERVICES LTD.
PETRA SCHWABE* 878-8101