

ROYAL LEPAGE

878-8101

388 Main Street E., Milton

Royal LePage Real Estate Services Ltd., Broker

* Sales Representative ** Associate Broker

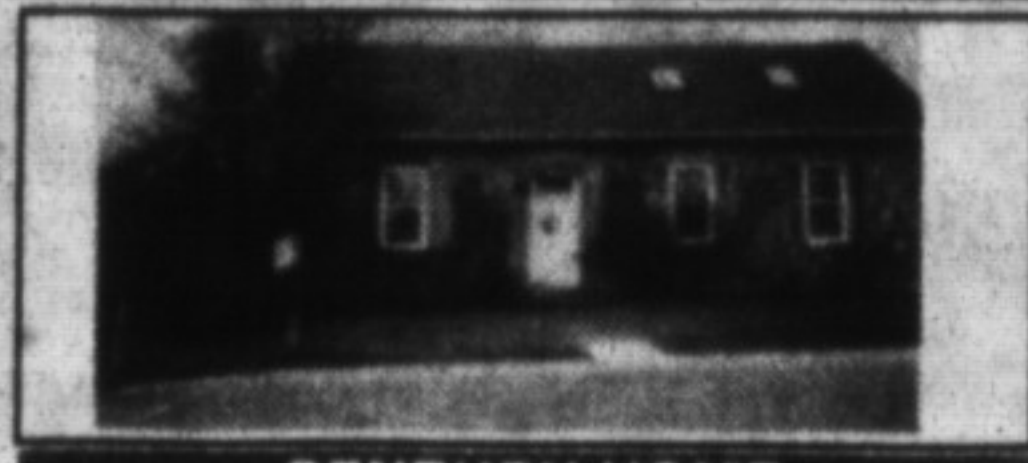
ROYAL LEPAGE

RE-1—The Canadian Champion, Wednesday, October 12, 1994



\$127,500

Lovely upgraded townhouse, extra large lot. Condo fees only \$100. Ed or Norma Proveau*



CENTURY HOME

1860 stone school now a beautiful home. One acre, three minutes to 401. Reduced to \$265,000. Ed or Norma Proveau*



\$169,900

Meticulous backsplit with many upgrades, new bath, new broodroom, finished lower level with wood-stove. Large private backyard. Denzil Lawrence*



\$249,900

14 wooded acres with stream & pond, 4 bdrm. Cedar home, very private setting, only 5 minutes to Hwy. 401. Denzil Lawrence*



\$349,000

Beautiful brick bungalow on 50 wooded acres north of Campbellville. 3 bdrms., fabulous living room with F.P., sunroom, many extras. Denzil Lawrence*



\$199,000

1-1/2 storey well-built brick home in mature area. Main floor MBR & lam. rm, charming L.R., sep. D.R., 2 baths, 3+ bdrms., fin. rec rm., storage space, dbl. gar. Mature Lot. A. Lear-Costigan*



SOLD IN 1 WEEK

\$174,900

Careful — it's loaded! This home offers 3+ bdrms., 2 baths, central air and vac and a finished basement. The inground pool is a bonus you'll enjoy. Barb Lefleche



\$234,900

In town country charm. This 4 bedroom, all brick home is set on a large lot with inground pool. This home offers lots of space for a growing family. Barb Lefleche*



\$224,900

This pretty grey brick home sits on a nicely landscaped lot in a desired area. MFR. F.R. with F.P., ensuite, main fl. laundry and finished basement are some of the fine features. Barb Lefleche*



REDUCED

NOW \$122,900

3 bdrm. townhome on Childs Drive. Longer closing possible. Buyers opportunity. Please ask for Ross Runnalls*



\$193,500

Surround yourself with luxury. Four bedrooms plus fin. rec room, numerous upgrades & renovations plus a premium fenced yard in fine neighbourhood. Eva Gooding*



\$167,900

Solid brick bungalow in desired neighborhood with 60' x 120' private yard, 4 bdrms., hwd. floors. Front & back decks, recent roof, fascia. Eva Gooding*



\$369,900

Custom built five yrs. ago. Approx. 3,700 sq. ft., this luxury home displays the finest workmanship & quality construction. Positioned in a select neighbourhood with a convenient 5 min. drive to 401 & a golf course. Eva Gooding*



\$182,500

Are you particular & need everything totally renovated to perfection. This is the one. Designed for luxury & livability with an addition, 3 bdrms., plus a separate in-law suite, gorgeous landscaping including a pond. Call Eva Gooding*



\$169,900

This listing features 4 bdrms., hardwood floors, plus walkout to huge deck. Call Sandi Kinsale* to view.



\$124,900

3 bdrms. plus 3 baths make this well maintained townhouse ideal for a young family. Call Sandi Kinsale* to view.



\$224,900

This 4 bdrm. home features gas fireplace, walkout to large deck, C/A, great location, close to schools & amenities. Call Sandi Kinsale* to view.



\$229,900

NEW LISTING - 4 bdrms., kitchen overlooking family room, walkout to large yard. Call Sandi Kinsale* to view.

LAND, LAND, LAND
Three properties with excellent home sites all convenient to 401 & GO Train.
35 ACRES—1/3 wooded, barn, well, pond & stream. \$225,000.
102 ACRES—1/2 wooded, \$299,000
90 ACRES—16 Mile Creek, ravine \$750,000

\$190,000
2 ACRES
Escarpment lot with a view
Contact:
A. LEAR-COSTIGAN

"TOGETHER"

We make it happen.

- LAMONT LEONE, Manager**
- Rudy Arbeiter878-3558
 - Virginia Brazeau878-1221
 - Barbara Crowe878-7875
 - Sandy Del Papa878-5229
 - Lawrie Given876-1961
 - Eva Gooding875-4009
 - Joyce Hagevik876-1084
 - Sandi Kinsale878-0392
 - Barb Lefleche875-3303
 - Denzil Lawrence878-1944
 - Audrea Lear-Costigan878-9151
 - Ed Proveau876-1707
 - Norma Proveau876-1707
 - Barbara Ramsden875-3913
 - Ross Runnalls878-6437
 - Petra Schwabe(519) 853-4871
 - Angela Silcock878-1853
 - Inge Winther(519) 853-1990

BARB LAFLECHE *

Sales Representative

878-8101

"Delivering the service you expect and deserve."

NEW



CHARMING CAPE COD
\$224,900

This attractive 4 bdrm. model is sure to please any growing family. It offers approximately 2100 sq. ft. of living space and features very generous room sizes including spacious eat-in kitchen with centre island & pantry, mn. fr. family & laundry rooms, finished rec room and more. Central air, vac and fresh neutral decor makes the home a winner! Well located near schools, parks and arena it sits on a nicely landscaped lot & shows pride of ownership. Be the first to view! Call Barb 878-8101.

NEW



SEASONED WITH LOVE
AND PRICE \$184,400

Original owners have meticulously maintained this popular style back-split. Located in an established neighbourhood, it sits on a nicely landscaped lot with many mature trees for privacy. There are 4 finished levels of fine family living to be found here including 3+ generous sized bedrooms, huge family and recreation rooms and 2 full baths. Don't miss viewing this one — there's more than meet the eye! Please call Barb.



LAWRIE GIVEN *

Sales Representative

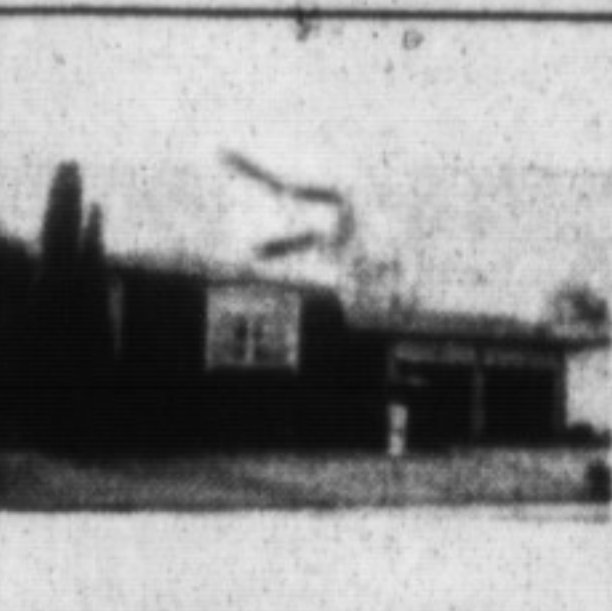
878-8101

Call me ... I'm always in the neighbourhood



\$280,000

Expand this to suit your business. This 2 storey Victorian farmhouse can be a perfect start for an industrial user. Located in Milton Business Park.



\$169,900

Looking for someplace central? This one is an easy commute to Georgetown, Brampton, Milton, Oakville, Mississauga, Guelph: 3 + 2 bdrms., hot tub, gas fireplace.

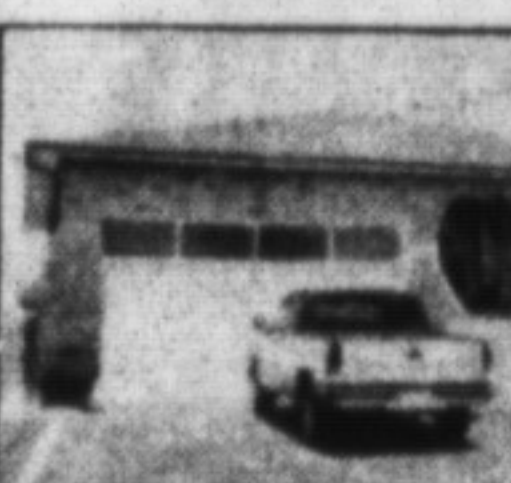


JOYCE HAGEVIK *

Sales Representative

878-8101

Gorgeous end unit townhouse done to the nines. New windows, A/C, fin. rec rm., remodelled kit., new front door, interlock patio with flower boxes, strip flooring and the list goes on.



\$227,900

Timberlea awaits your growing family. Spacious rooms, 4 baths, laundry-mud rm., fam. rm. with walkout to yard, F.P., future rec. room. Over 2200 sq. ft. on 150' lot.

\$232,000

1 1/2 storey plus retail shop \$1,400 monthly or rent to own. Private yard plus good corner exposure. Call to view. You won't be disappointed.



OVERPRICED

\$136,900



BARBARA CROWE MVA **

Associate Broker

878-8101

24-Hour-Pager



A-1 NEIGHBOURHOOD

3 bdrm, 2 storey in a prime location close to public & high-schools. Eat-in kitchen, main floor laundry & finished rec. room. \$159,900.



BREAKFAST FOR LEARNING HOME

When a "Breakfast for Learning" home is sold, a portion of the proceeds is donated to help feed hungry school children in our community



HWY. 25 IN A SUPER LOCATION

Only a few minutes from Hwy. 401. This attractive bungalow features a modern kitchen open to the fam. rm., 2 baths and F.P. in the living room. \$216,900



PETRA SCHWABE * BA

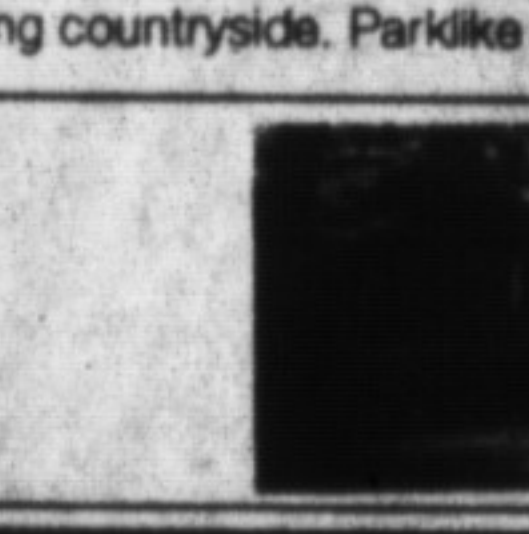
Sales Representative

878-8101



GRACIOUS CENTURY HOME

Lovingly restored and beautifully decorated, 4 bdrms., new family room addition with fabulous views of the surrounding countryside. Parklike setting with stream. \$333,900.



PICTURESQUE SETTING

Attractive custom-built bungalow on 2.5 acres, mostly wooded with stream, 4 bdrms., 3 walkouts, super location between Georgetown and Milton. \$319,000.



SANDY DEL PAPA *

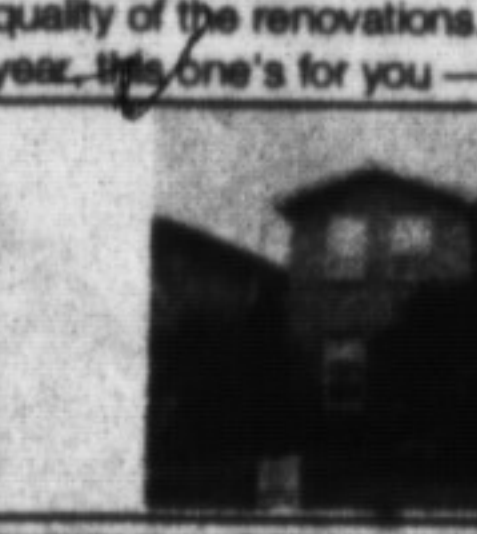
Sales Representative

878-8101



CHARM & ELEGANCE

This beautifully maintained century home shows the pride of ownership both from the meticulously manicured grounds & from the quality of the renovations. If you're looking for the charm of yesteryear...this one's for you — \$279,900.



RELAX & ENJOY

A huge greenhouse kitchen with walkout to a sparkling inground pool makes summer entertaining a treat OR relax in cozy comfort in the spacious family room with custom designed fireplace & oak walls. Lots of other features — call today!



VIRGINIA BRAZEAU * R.N.

Sales Representative

878-8101

(TOR.) 336-4836



INGROUND POOL

OAKVILLE/MILTON COUNTRY
\$259,000 for this charming country home with perennial gardens & garage. Possibility of in-law/2 family living. Recent furnace & shingles. Call for details. Priced to sell.



24 ACRES

RETAIL GREENHOUSE
Appl. Linc, 6th Line just S. of 401. Housed cedar home w. 2 car garage. Large separate permanent building/workshop/garage/office. Home boasts full in-law suite at ground level w/white doors. Approx. 2800 sq. ft. \$379,000.



10 ACRES

BURNHAMTHORPE E. OF TRAFALGAR
30' x 60' new block garage w 4 extra high garage doors & 2 finished offices. Renovated farmhouse with Beemans windows, retiling, new kitchen, new soffits, fascia. Investment potential. \$295,000.

"It's good to know someone who knows and cares"

VACANT LAND
25 ACRES — \$239,000
Excellent location for this very pretty property with woods at the road & clear higher land at midway. Pond & stream complete the picture to make this an ideal opportunity to build your dream home. Just minutes from the 401/GUELPH LINE.

VACANT LAND
\$49,000 — 1/2 ACRE
This is not a misprint! Located just west of Acton on Hwy. #7 at the Milton/Eramosa Town Line. An opportunity at this price won't come your way again. Call for details!