



**GLEN THOMAS**  
Sales Representative  
Bus. 878-7777  
Res. 876-0987

## SUCCESS

STARTS WITH THE RIGHT AGENT.  
Call Glen and Gary at RE/MAX first

RE/MAX, THE NAME SYNONYMOUS WITH REAL ESTATE SUCCESS IN MILTON!



**Gary Thomas**  
Broker/Owner  
878-7777  
Tor. Line 825-4485  
Res. 875-3700



**"LAWSON RD. \$79,500 - WOW!"**  
Excellent buy here. 1993 square feet of prime industrial unit. Ideal for auto related business. Power of Sale. Be wise and call.  
**GLEN THOMAS.....ONLY \$79,500**



**"REMEMBER WHEN..."**  
Every once in a while there is a home that exemplifies true country spirit. These careful owners have lovingly restored this gorgeous 1 1/2 storey home right in the Village of Campbellville. Start your memories here, call:  
**GLEN THOMAS.....\$239,000**



**"GOT MY EYE ON IT"**  
What a fantastic property! 3 bdrm solid brick bungalow on just under an acre. Very close to town with gorgeous escarpment views. \$214,900.  
**GARY THOMAS.....\$214,900**

**132 ACRES** of prime farmland on Derry Rd & Twiss Rd. **\$6,000/Acre**

**POWER OF SALE** -Industrial Units, 3000 sq. ft. Only **\$145,500 Double Unit.**

Small furnished office space 400 sq. ft. + washroom. **\$275 /Month**

800 sq. ft. of light industrial storage space. **\$350 /Month**

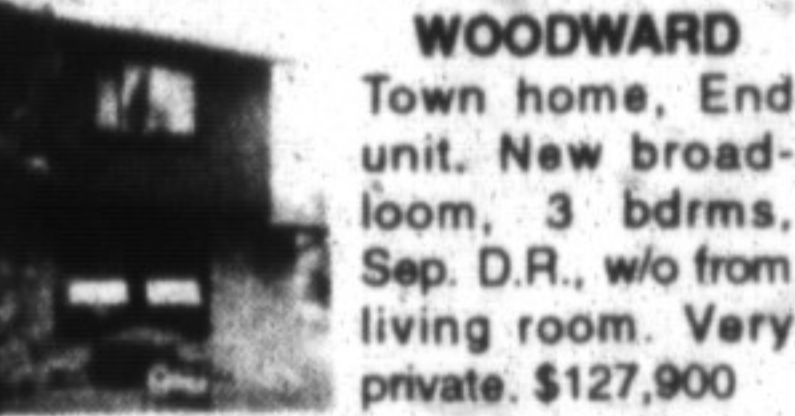
**CALL GARY THOMAS ...878-7777**

### BETTY INGLE

Sales Rep  
878-7777  
Res. 827-4286



**THOMAS STREET**  
Beautifully depicted by local artist Chris Burnett in her rendition of "Milton Fall Fair" this heritage home offers a centre hall plan with stately rooms. Formal living room, separate dining room and family room with wood burning fireplace. This home is a true treasure and should not be missed. Double lot, nicely treed and separate double car garage complete the package \$419,900.



**WOODWARD**  
Town home. End unit. New broadloom, 3 bdrms, Sep. D.R., w/o from living room. Very private. \$127,900

### ONE ACRE LOT ON TOWN WATER

- View of escarpment • \$99,900
- Vendor will take back a mortgage of 50% of the purchase price
- Phone Betty
- Take Action
- Make an Offer.

### RICHARD HIERMAN

Sales Representative  
Office: 878-7777  
Toronto: 825-4485  
Res: 878-5806



**GORGEOUS BRICK BUNGALOW**  
On huge landscaped lot with many shrubs & trees... offers 3 bdrms., country kit. with dinette, family room with F.P., formal D.R. & L.R. Must be seen, make your appointment with Betty Ingle today. **REDUCED \$369,900.**



**CAMPBELLVILLE**  
Family home on well landscaped lot. 3 bedrooms, family room, open concept kitchen, in-law suite with walkout from lower level. Must see. \$354,900.

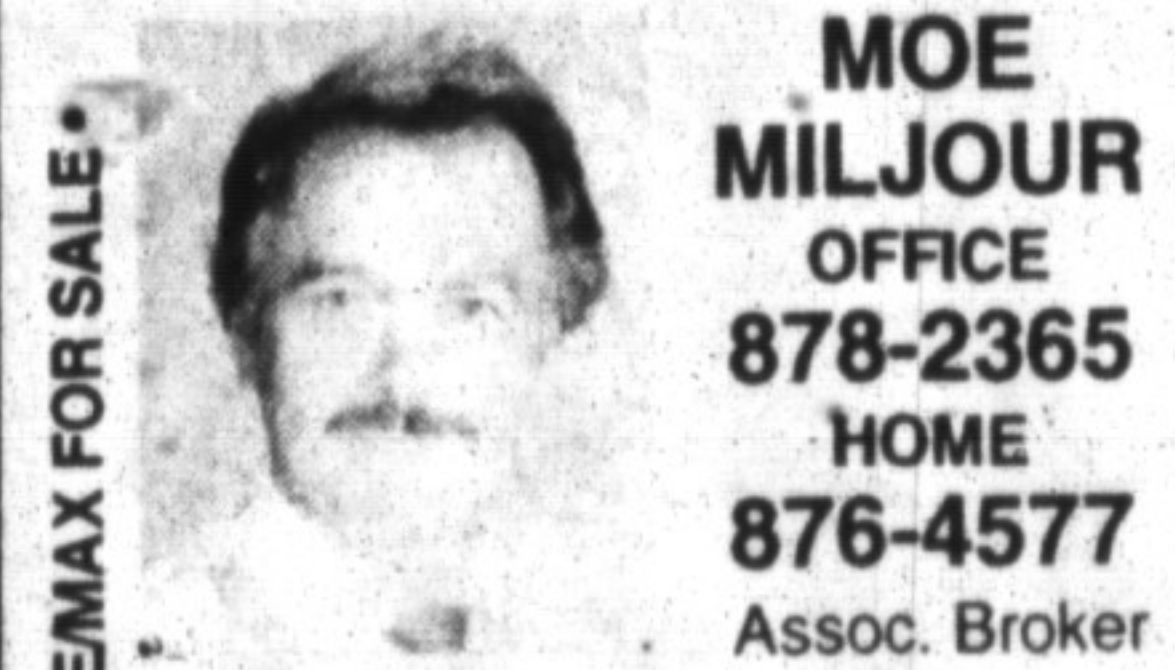
### KATRINA WALTON

Sales Representative  
Office: 878-7777  
Res: 878-1588  
Tor. Line: 825-4485



**HERITAGE HOME**  
This beautiful heritage home was built in 1915 and has a new board and baton addition. Situated in beautiful old Milton, it is within easy walking distance to downtown shops, parks and school. If you are looking for a gorgeous heritage home that has been totally renovated... then this is it! Kitchen is a gourmet's delight, open concept to sunroom. Main floor family room with fireplace. Elegant separate dining room. Cozy living room with fireplace. Upstairs offers 3 bedrooms with beautifully renovated bathroom. Lower level den / 4th bedroom with fireplace and bathroom. **\$289,000.**

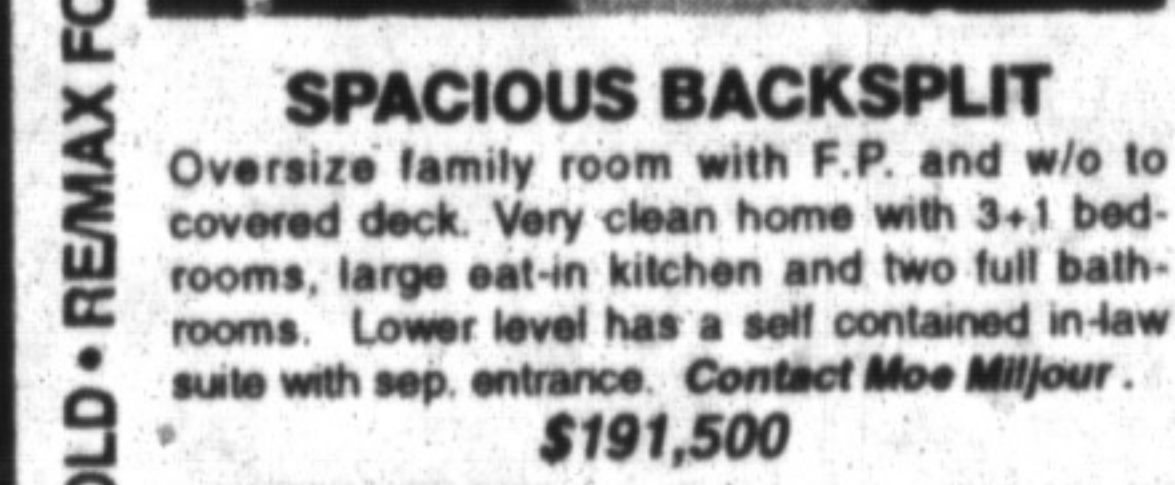
RE/MAX FOR SALE • RE/MAX SOLD



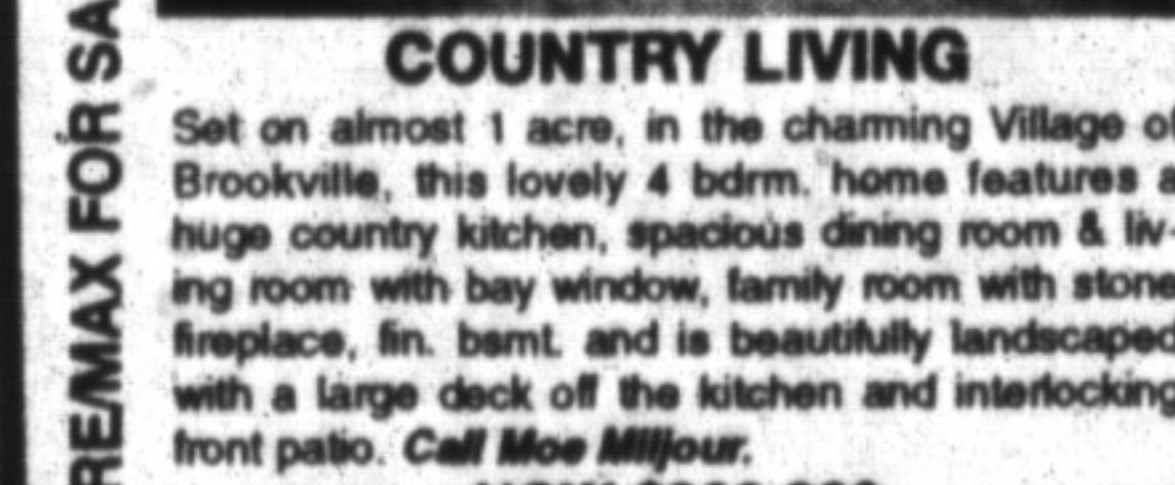
**MOE MILJOUR**  
OFFICE 878-2365  
HOME 876-4577  
Assoc. Broker



**CARPENTER'S HOME**  
Custom built home with oak trim throughout, 30' F.R. with Cedar ceiling, 3 extra large bdrms., high efficiency gas furnace, cent. vac, finished rec. rm. and 14' x 28' IG pool. A unique and beautiful home. Contact Moe Miljour.  
**NOW \$228,000**



**SPACIOUS BACKSPLIT**  
Oversize family room with F.P. and w/o to covered deck. Very clean home with 3+1 bedrooms, large eat-in kitchen and two full bathrooms. Lower level has a self contained in-law suite with sep. entrance. Contact Moe Miljour.  
**\$191,500**



**COUNTRY LIVING**  
Set on almost 1 acre, in the charming Village of Brookville, this lovely 4 bdrm. home features a huge country kitchen, spacious dining room & living room with bay window, family room with stone fireplace, fin. bmt. and is beautifully landscaped with a large deck off the kitchen and interlocking front patio. Call Moe Miljour.  
**NOW \$268,900**

RE/MAX FOR SALE • RE/MAX SOLD



**FOR SALE/LEASE**  
6,000 sq. ft. on one acre on Main St. Milton. 1000 sq. ft. retail, high ceilings, 2 mezzanines, 16' drive in doors & a foundation in for another 9,000 sq. ft. Please ask for Scott.



**POWER OF SALE**  
This beautiful 97-acre property is situated halfway between Milton & Georgetown. 2-1/2 storey main house, bark barn 55' x 80', drive shed 27' x 39'. Great potential for the right investor! Asking \$559,000.



**EXECUTIVE LIVING**  
Can be yours if you choose this lovely 4 bdrm. family home set on a large lot on prestigious Robertson Cres. Features such as an eat-in kitchen with w/o, sep. D.R./L.R., mn. fr. laundry & part. fin. bmt. make this an ideal home for fine family living. Asking \$269,900. Call Scott B. Prior.



**OFF TO A GREAT START!**  
Great location - close to all amenities, this 3 bedroom townhome has been nicely finished with new kitchen flooring, built-in dishwasher and a fully finished basement. The perfect starter home for the first time buyer. Asking \$124,900. Call Scott B. Prior.



**Don't wait.**  
Call RE/MAX first.  
Milton's #1 Real Estate Company  
For years & years & years

JP SOLD JP SOLD JP SOLD JP SOLD JP SOLD JP SOLD JP SOLD JP SOLD JP SOLD JP SOLD

|   |  |  |  |  |
|---|--|--|--|--|
| <p><b>CLASSIC BUNGALOW</b></p> <p>Burlington's distinctive area close to lake. This oversized bungalow with an added family room with fireplace, florida room, separate breakfast room, separate dining and living room with hardwood floors. Solid Oak doors throughout too many upgrades to note. \$249,000. Call for list.</p> | <p><b>EXTRA SPACE</b></p> <p>Four bedroom townhome end unit in the Pitfield estate, central air, fin. rec. room, huge back garden, fenced, nice layout. Asking \$132,900. Call JP for viewing.</p> | <p><b>MOVE IN</b></p> <p>Be the first to view this recently upgraded town home completely upgraded carpet, central air, extra long driveway, condo fee includes cable and at \$134 per month is one of the best. This one won't last. Asking \$129,900 Call JP</p> | <p><b>IDEAL COMMUTER</b></p> <p>Large country bungalow on over a half an acre, 3 large bedrooms eat-in kitchen large dining room, and living room, recently replaced roof, double car garage, close to Milton or Mississauga. Ideal home for Truck parking or small home business asking \$209,000. Call JP for showing.</p> | <p><b>JOHN (JP) PEARS</b><br/>Sales Rep<br/>Office 878-7777<br/>Res. 878-6859<br/>Tor. Line 825-4485<br/><b>RE/MAX MILTOWNE REALTY CORP.</b><br/>Demand the Very Best!</p> |
|---|--|--|--|--|

|  |   |   |   |  |
|--|---|---|---|--|
| <p><b>WHY RENT</b></p> <p>Yes, the economy is low! If it wasn't, you would pay almost double for these units. 1,300-5,800 sq. ft. from \$39,500 per sq. ft. Vendor financing. Call JP.</p> | <p><b>LAND SECOND TO NONE</b></p> <p>For the larger discerning family over 3500 sq. ft. of living area, 5 bdrms., 3 baths, main fl. lam. rm., huge kit., large workshop/gar. on property plus guest house/studio. 25 acres of treed rolling land. Call JP \$439,900</p> | <p><b>SUCCESS</b></p> <p>Achievement has its own rewards, this is one of them. Formal living and dining rooms, super large family room with fireplace, 4 bdrms., 3 bathrooms, gourmet kitchen, all on over 2 acres in a beautiful wooded private estate. Call JP for your private showing \$429,900</p> | <p><b>COUNTRY IN TOWN</b></p> <p>Love a gracious setting? Taster style raised ranch with close to 1/2 acre, upgraded, 3 bdrms., 2 baths, eat-in kitchen, sep. living and dining areas, prof. fin. basement with F.P. &amp; wet bar, w/o to beautifully landscaped gardens and l.g. pool for those hot, lazy days of summer. \$148,000. Don't hesitate call JP to view 878-7777.</p> | <p><b>WHAT A LOT</b></p> <p>Over 9 acres of rolling land, with trees &amp; a stream running right through the property. Newly decorated 3 bedroom suite split with a new massive deck for those lazy days, eat-in kit., sep. D.R. &amp; L.R. with F.P. early possession. \$284,000. A must to see.</p> |
|--|---|---|---|--|

JP SOLD JP SOLD JP SOLD JP SOLD JP SOLD JP SOLD JP SOLD JP SOLD JP SOLD JP SOLD