

ROYAL LEPAGE

Aim Higher...

Royal LePage Real Estate Services Ltd., Broker

878-8101

388 Main Street E., Milton

* Sales Representative ** Associate Broker

ROYAL LEPAGE

Aim Higher...



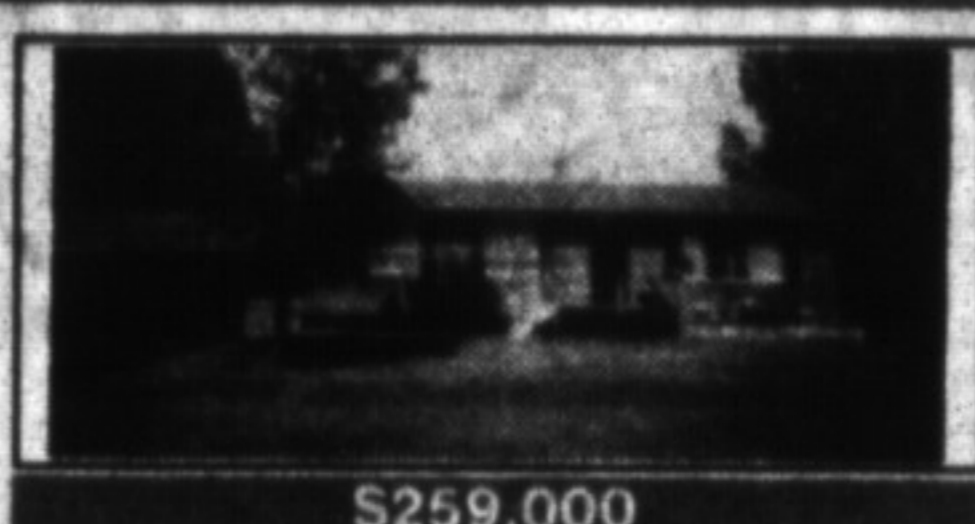
\$232,000
Buy & divide for profit. (1 1/2 storey home plus shop). Set on the corner of Mill & Bronte with parking, storage, high traffic & fresh paint. Joyce Hagevik*



\$120,000
Attractive end unit with a nicely fenced and very private backyard, W/O from living room, separate dining room, etc. Petra Schwabe*



\$172,900
Magnificent backdrop with many upgrades, new bath, new broodroom & ceramics, finished lower level with woodstove. Large, private backyard. Petra Schwabe*



\$259,000
Immaculate brick bungalow with many upgrades, on 10 gorgeous acres, beautifully landscaped, partly treed & rolling meadows. Includes separate 24' x 24' workshop. Petra Schwabe*



\$267,500
Gorgeous, park-like setting! 10 acres of nature at the doorstep of this attractive 3 bdrm home, new sunroom addition, W/O from lower level +++. Petra Schwabe*



\$229,900
Make your move to White Dr. This home offers a generous size kitchen, family room with FP, ensuite bath, central air and more. Call me to inspect. Barb Lafèche*



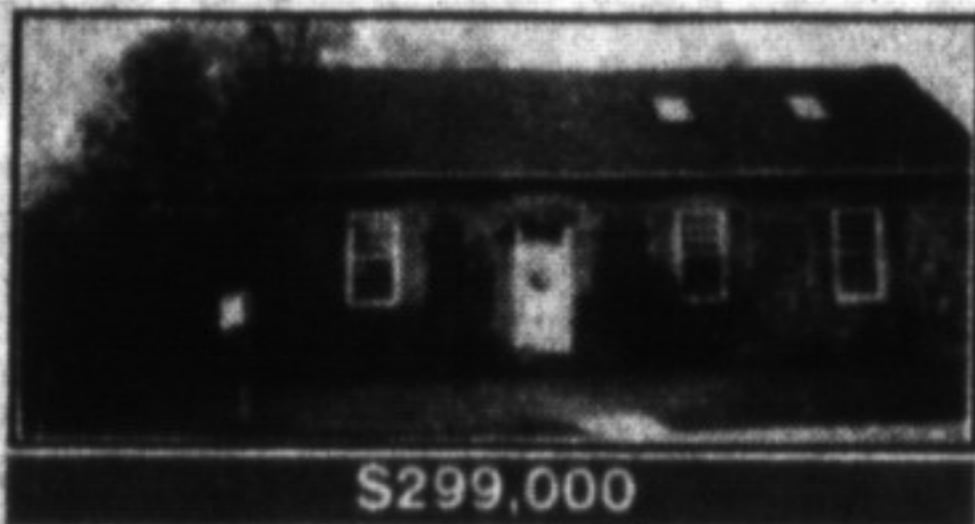
\$199,900
Ideal home for a large family. In-law suite in lower level, private entrance and completely self-contained. Rudy Arbeiter*



140 MARKET DRIVE
Industrial space from 3500 to 21,000 feet. Prime industrial location in north Milton. Ross Runnalls**



\$124,900
Childs Drive townhouse. Finished basement, flexible possession. Please call to inspect. Ross Runnalls**



\$299,000
1860 stone schoolhouse. A home with elegance. Beautiful 1 acre. 3 min. to 401. Ed or Norma Proveau*



\$205,000
Priced to sell! Brick home, main floor family room, rec. room, 2 car garage, large lot. Ed or Norma Proveau*



\$121,500
For beginners - attractive 3+ bedroom townhome in a great location, close to schools and backing onto park. Call Barbara Ramsden* for more info.



\$199,000
Unique 1 1/2 storey brick built home in an older section of town on extra large lot. Charm and location. Call Barbara Ramsden* for more info.



\$174,900
Buy now & save later with an eight month possession date. This sturdy bungalow comes complete with 4 bedrooms, dining rm., finished rec. rm., hardwood floors, 2 decks & a gorgeous private yard in an ideal family neighbourhood. Call Eve Gooding*



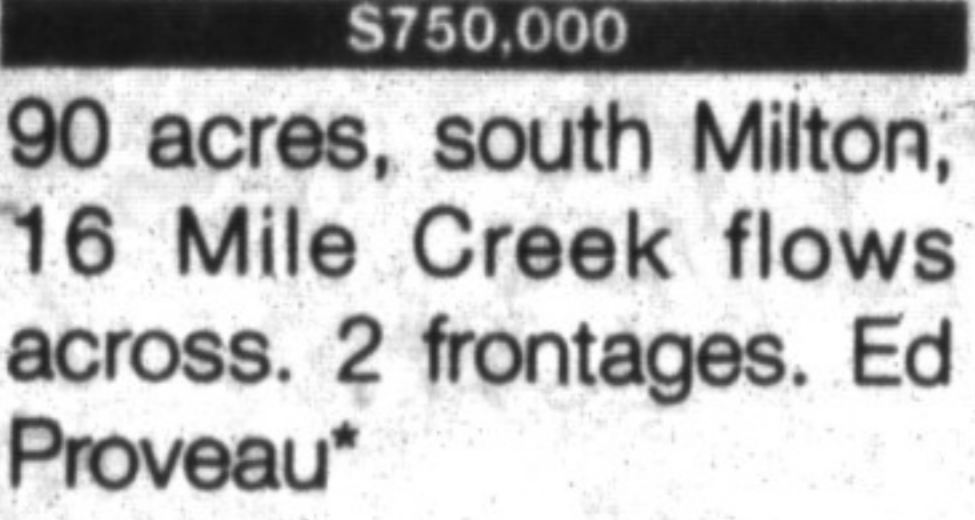
\$197,500
If you're very particular and everything needs to be perfect, this is the one. Very stylish with 4 bdrms, finished rec. rm., central air & vac., eat-in kitchen on a gorgeous private yard, in an area where each home reflects pride of ownership! Call Eve Gooding*



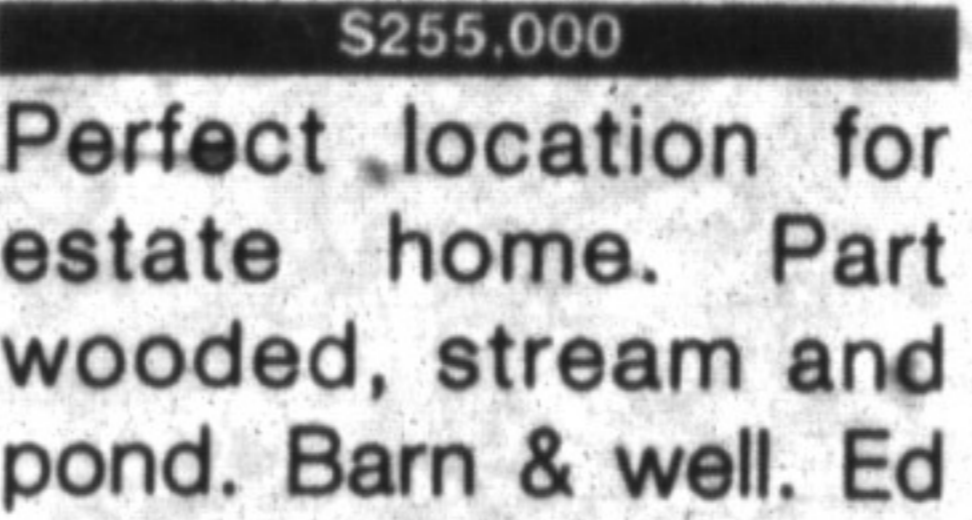
\$282,000
Outstanding century home situated on scenic 36.74 acre w/ stream. Renovated thruout, high efficiency furnace, 2 decks. Open concept, country kitchen and family room. A rare find. Call Eve Gooding*



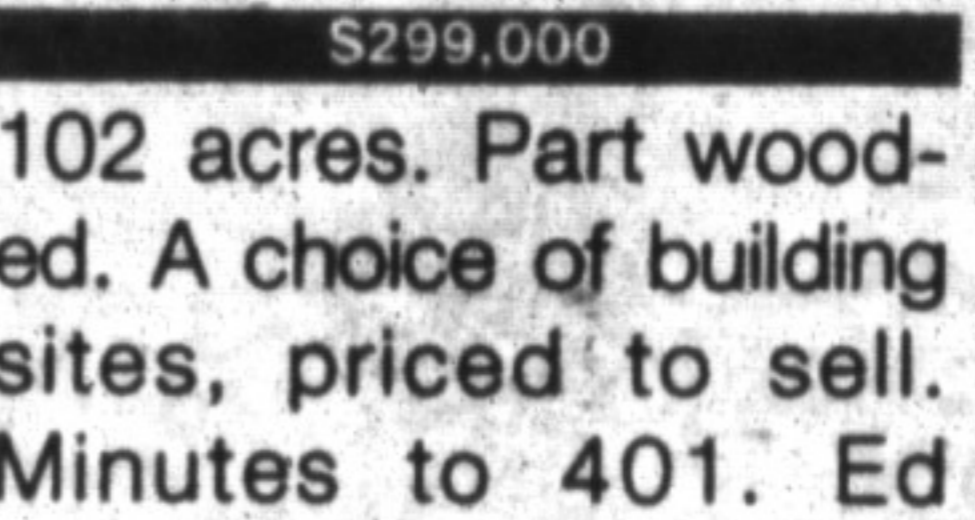
\$179,900
Positioned in an area where each home reflects pride of ownership. Individual characteristics with very large rooms including main floor family rm., recent double detached garage plus a separate workshop. Call Eve Gooding*



\$750,000
90 acres, south Milton, 16 Mile Creek flows across. 2 frontages. Ed Proveau*



\$255,000
Perfect location for estate home. Part wooded, stream and pond. Barn & well. Ed or Norma Proveau*



\$299,000
102 acres. Part wooded. A choice of building sites, priced to sell. Minutes to 401. Ed Proveau*

What a relief!



The worry-free way to home ownership.

Offered by Thompson, Thompson & Associates Ltd., Insurance Brokers
1-800-665-5511.

Brochure and Application Form available from our offices.

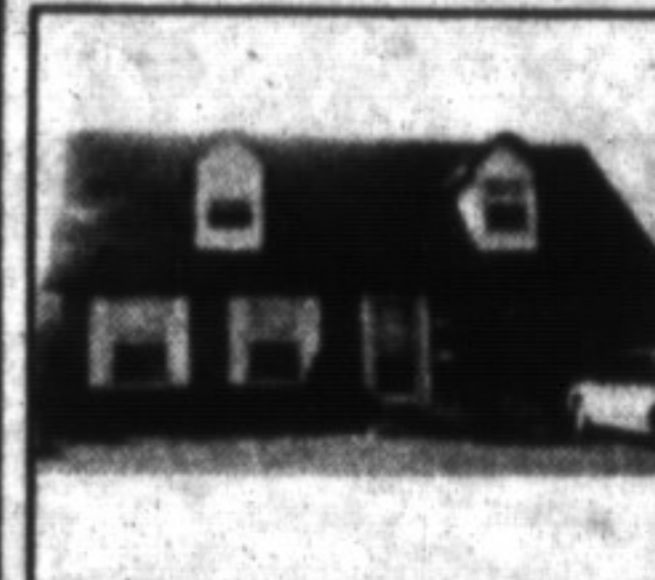


LAWRIE GIVEN*
Sales Representative
878-8101

Call me ... I'm always in the neighbourhood



\$169,900
There's lots of potential here. A great location for your home business just on the edge of town. 3 bdrms, main fl. fam. rm. & laundry rm., new kitchen & bathroom. All on half an acre.



\$192,900
Located in one of Milton's more desirable areas. This 4 bdrm beauty is a must to see. Main fl. fam. rm., eat-in kitchen w/ W/O to deck. Cent. air & a large fenced lot. Call now for a personal inspection today.

A gift to everyone in Milton from

ROYAL LEPAGE

The sales representatives, manager and staff of Royal LePage Real Estate Service Ltd., located at 388 Main St. East, are offering everyone in Milton "FREE LONG DISTANCE" telephone calls to Mississauga and Toronto, as often as you want and for as long as you want, from your own home or business touch-tone phones with 875, 876, 878, or 854 exchanges.

That's right - FREE!

Lamont Leone, Branch Sales Manager, said "as an expression of goodwill, we feel that, by offering this free long distance telephone service, we are giving something back to the residents and business people in Milton that have helped Royal LePage become so successful in the real estate business."

"As a full service company, we think this offer also demonstrates our concern and interest for delivering the best service by the best representatives in the industry", Mr. Leone stated.

To dial toll free to Mississauga and/or Toronto, simply dial 842-FREE (3733), listen to a 10 second message and follow the prompts. It's that simple!

"As an added feature" said Mr. Leone, "anyone from Mississauga and/or Toronto can call Milton lines for FREE by following the same dialing procedure. We hope this special offer will enable families in each area to communicate more often without worrying about the expense".



JOYCE HAGEVIK*
Sales Representative
The name friends and neighbours recommend



\$232,000
This 4 level, 4 bdrm backdrop offers more than family sized living space. Good area, nice street & close to schools, buses & shopping.



\$399,000
Great home set on 10 escarpment acres. Only mins. from Milton. This multi level home offers spacious rooms, quality throughout, 2 terraces & 3 car garage.



DENZIL LAWRENCE*
Sales Representative
878-8101



\$333,900
Majestic older home 4 bdrms separate dining, large new family rm., attractively decorated. Situated on nearly two acres, park like setting. Denzil Lawrence*

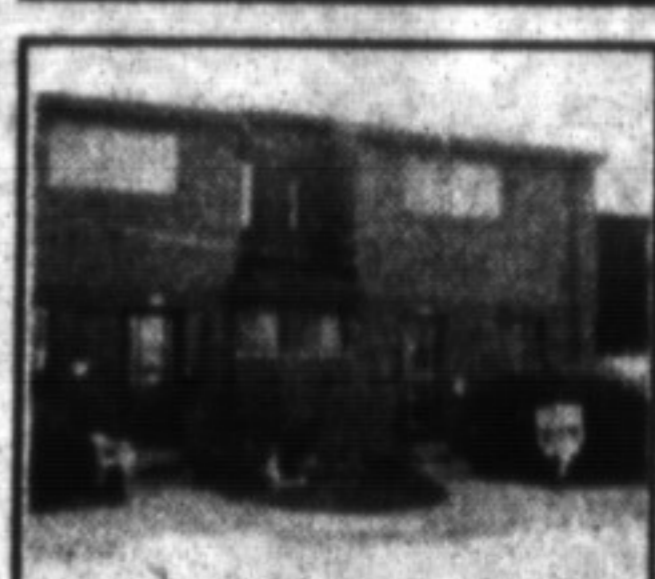


\$249,900
14 acres, park-like setting, private 4 bdrm two storey cedar home, 10 minutes to 401. Denzil Lawrence*



BARBARA CROWE MVA**
Associate Broker
878-8101
24-Hour-Pager

Attention First Time Buyers



\$115,900
Attractively decorated 2 storey, 3 bdrm townhouse with 2 baths, C/A and patio doors off the living room leading to a yard with a very pleasant view.



\$157,900
Specious 2 storey with a view of the escarpment. 3 bdrms upstairs & one in the basement. Also features a rec room, central vac. and privacy fenced yard.



SANDY DEL PAPA*
Sales Representative
878-8101



ROOM TO GROW
This 4 bdrm. exec. home is one of the larger models offering oversized greenhouse kit., circular oak stair case, M.F. family & laundry rms. PLUS a beautiful inground pool.



COUNTRY ELEGANCE \$279,900
Charming in move-in condition. Long winding laneway flanked by trees, flowerbeds & shrubs. Flawless Pine floors, stained glass windows & cozy fireplace in dining room/ family room addition.