

RE/MAX



Miltowne Realty Corp
 Milton's #1 Real Estate Company
 22 Ontario St. South 878-7777
 INDEPENDENTLY OWNED AND OPERATED



ANNE TAYLOR
 Associate Broker
 Town & Country
 REGISTERED
 RELOCATION
 SPECIALIST
854-9833
 Tor.: 625-4485
 Pager: 878-7777



FOR THE COUNTRY EXECUTIVE
\$599,000

Century home beautifully renovated on contemporary lines, double barns with office suite, large steel outbuilding, inground pool surrounded by lush gardens, greenhouse, orchard, small airstrip and much more.



LINDSAY J. McLAREN
 Sales Representative
878-7777 Office
 (Res.) 854-2451 (Tor. Line) 825-4485



BACKS ONTO PARK

Located in a mature area of Milton close to schools this brick and wood home features 3 bedrooms, east-in kitchen, L.R. DR. combination hardwood and broadloom floors, carpet and large lot. Call: Lindsay J. McLaren. Was \$169,900. Reduced \$164,900.



HAMLET OF MOFFAT
REDUCED TO \$162,900.

Distinctive and stately, this near century family home is approx. 1950 sq. ft. plus 450 sq. ft. on third floor and features roofed roof and furnace, huge living room with fireplace, separate dining room, kitchen with laundry, sunroom, 4 large bedrooms and potential for more finished area on third floor. For further details please call Lindsay J. McLaren.



HISTORIC MILTON
\$159,900

Charming early Victorian (1856) brick cottage in Milton's fine heritage district. Lush private oversized lot. A rare architectural gem like this rarely comes on the market.



FOUR BEDS AND GRANNY FLAT
\$187,900

Newly listed - newly decorated - Dorset Park beauty. Three finished levels plus granny flat on quiet crescent - won't last.



HOBBY HORSE FARM
MILTON \$336,000

Custom designed home on 10 acres with six stall hip barn, paddocks. Large rear deck overlooks spring-fed pond. Quiet agricultural area yet 10 minutes to Town and Mohawk.



OLD MILTON
\$146,900

Older home, commercial zoning. Totally renovated. Great starter home or business location.



CENTURY STONE, C'VILLE

High on a hill with maple tree-lined drive, this 12 acre property with fruit trees and open fields, features an immaculate renovated gabled farmhouse with 4 bedrooms, 3 baths, comfortable L.R. & D.R., large country sized Mt., M.F. farm. sm. with F.P. & walkout, fire. barn & huge oversized 2 car garage. Ideal for small horse farm or country retreat. Lindsay J. McLaren. \$419,900.



MUST BE SEEN SEPARATE APARTMENT

Situated on a quiet court in Dorset Park, this home may be just what you've been looking for and is ideal for a very large family; in-law or nanny situation with 6 bedrooms, 2 living rooms, 2 kitchens, 2 full baths, pleasant decor throughout and very well kept, above ground pool, pride of ownership evident throughout. For further details please call Lindsay J. McLaren. Was \$219,900. Now \$204,900.



MOUNTSBERG CHALET

Nestled at the end of Gleason Rd on a very private and scenic 10 acre lot with mostly evergreens this 1 1/2 story brick and cedar home features kitchen and dining room combination with brick fireplace, cathedral ceilings & wraparound decks, 2 bedrooms on main level, master bedroom on second level with ensuite and open to cathedral ceilings, finished rec room with woodstove, single car garage, and central air. To view this unique property please call Lindsay J. McLaren. Was \$219,900. Now \$199,900.



RON FURIK
 Sales Representative
 Office: 878-7777
 Res. 878-3337
 Tor. Line 825-4485



IMMEDIATE POSSESSION AVAILABLE

This one has it all: 4 bedrooms, 3 baths, 2 fireplaces and 1 greenhouse kitchen are only some of the fine features. For your personal tour of this well maintained home, ask for Ron. Now \$226,900.



CHARACTER HOME

Located in old Milton neighbourhood features 4 bedrooms, 3 bathrooms, many upgrades. For your personal inspection of this home ask for Ron. Listed at \$219,000.



CHECK OUT THIS

Well maintained 3 bedroom plus home, features large eat-in kitchen, large recreation room, 3 piece ensuite & oak trim throughout situated on large lot. Asking \$196,900.

★ REMAX SOLD ★ REMAX SOLD ★ REMAX SOLD ★ REMAX SOLD ★ REMAX SOLD ★ REMAX SOLD ★ REMAX SOLD ★ REMAX SOLD ★



SHERYL GRAY
 Sales Representative
 Office: 878-7777
 Res. 875-1121
 Tor. Line 825-4485



IMMEDIATE POSSESSION IF REQUIRED

Popular 2 storey townhouse in desirable complex, 3 bedrooms, finished basement, single car garage, upgraded broadloom. Use of pool and rec centre. Reduced to \$118,900. Hurry and call Sheryl at 878-777 before it's too late!!!



THIS TOPS THEM ALL

Custom built 3143 sq. ft. of pure elegance, nestled on 2.03 acres in Brookville. Loads of upgrades, ceramic tile, hardwood, broadloom, 2 fireplaces, centre hall plan, greenhouse kitchen, 4 bedrooms and much more. For your personal tour call 878-7777 and ask for Sheryl.

HAVE PURCHASERS LOOKING FOR

- 1 IN TOWN — 3 Bedroom, nicely finished, central air and pool \$200,000.
- 2 CENTURY HOME in country 2,500 sq. ft. ++ secluded property. Up to \$350,000.

If you have been considering a move please call me today at 878-7777 for a pressure free, no obligation evaluation.

Thank you
Sheryl Gray

★ REMAX SOLD ★ REMAX SOLD ★ REMAX SOLD ★ REMAX SOLD ★ REMAX SOLD ★ REMAX SOLD ★ REMAX SOLD ★



JEAN SNOWDEN
 SALES REPRESENTATIVE
878-7777 Office
878-3155 Res.



HOTFOOT IT OVER

To see this home... Just listed and in a convenient location, this home has a large eat-in kitchen, 3 bedrooms and ceiling fans plus central air to keep you cool. \$158,500



AL VOLPE
 Sales Rep.
878-7777



GOOD START

Into a townhouse may be the way to go. With 3 bedrooms, 3 baths, private back yard with deck. Backing onto detached homes. Dare to compare. If your looking at one, look at us.

SPORTSMEN'S RETREAT - 122 acres of land on Derry/Hwy 6 property. Suitable for hunting, fishing or sportsmen's club. Many spring fed ponds with assorted wildlife. \$229,000

INDUSTRIAL DRIVE MILTON - 2.9 Acres vacant land. M2 zoning, priced to sell. \$429,000.

MOUNT NEMO - 2 acre building lot. Almost to the very top, great view. \$229,000.



CHERRINGTON CRESCENT \$229,900

1900 Sq. ft. Great Gulf home-open concept, 3 bedrooms, 3 baths, 2 car garage with auto. door opener, main floor Family Rm with FP, central air, elec. air cleaner, interlocking walkway, fenced yard and many more added features. This home is set on a quiet crescent, close to Hwy 403, 5 min. to Credit Valley Hospital.

If you're thinking of moving to Mississauga and you live in Milton, let us talk about guaranteeing the sale of your home.

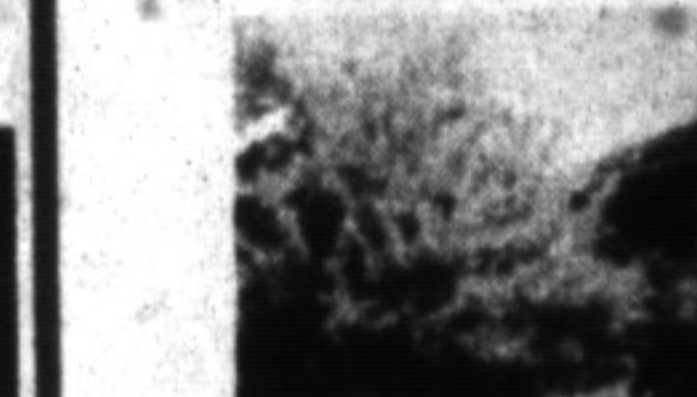
KATRINA WALTON
 Sales Representative

Office: **878-7777**
 Res: **878-1588**
 Tor. Line: **825-4485**



BROOKVILLE

Beautiful 1 acre Brookville estate. "Robertson" built 3 bedrooms, family room and den, 3 car garage. \$377,000.



GUELPH LINE

Panoramic view, 12 acres, architect designed, multi level home, barn & 2 bdrm self contained apt. Paddocks 12 acres. \$479,000.



HEATHER ASHBEE

Sales Representative
 OFFICE: 878-7777
 RES: 854-0543
 TOR. LINE: 825-4485



MOVE ON UP

Loaded with luxury features, 9' ceilings, hardwood throughout, gourmet kitchen, stunning wall of windows as backdrop for a solid oak three storey staircase. \$399,500.



POND

FINE COUNTRY LIVING

Set deep into parklike lot. This upgraded home has many fine features — spacious oak kitchen, formal living room with fireplace, main floor family room. \$284,900.



CURB APPEAL

A PICTURE IS WORTH 1,000 WORDS

Prestigious Campbellville estate home with all the bells & whistles. V.G. pool with change-house, wooded ravine, 2.9 acre lot with stream. Asking \$649,000.



COOL POOL

SUPER FAMILY HOME!

Lovingly maintained. Finished rec. room with fireplace, 2 baths, large yard with pool. \$172,900.



COUNTRY STARTER

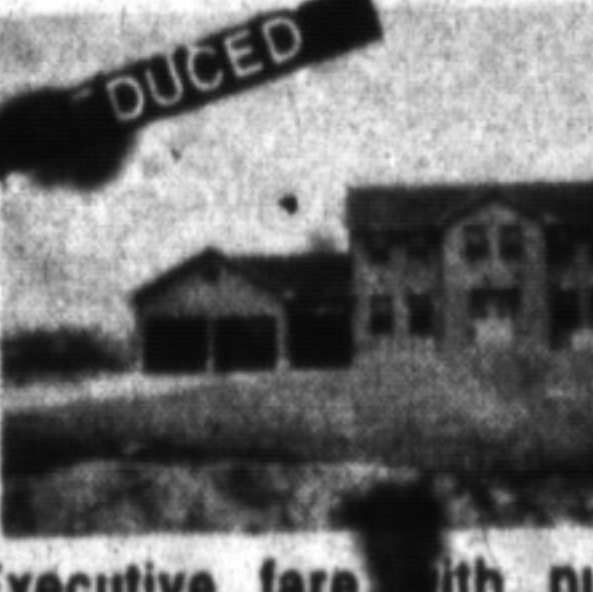
YOU CAN'T BEAT IT!

PRICE: \$205,900
 LOCATION: Britannia & Trafalgar
 FEATURES: New windows, furnace fin. basement, 3 car garage.



CAROLE D. BUDWORTH
 Sales Representative

OFFICE: 878-7777
 RES: 878-8545
 FAX: 878-7029



Executive fare with numerous upgrades are present in this model home in a rural estate subdivision — peace, serenity and neighbours just far enough away to enjoy. \$298,750.



NEW LISTING

Fabulous price for a 3600 sq. ft. custom built home on 2 acres. Well laid out and designed. Enjoy the best of both worlds - rural estate subdivision close to town. \$379,000.



REDUCED

Great country buy at an affordable in-town price. Home offers elegance, privacy, excellent commuting to all major centres. Live the grand life and enjoy. \$268,750.



HOBBY FARM

35 acres partly wooded with fenced, open fields, pond, barn with 4 stalls and loft, separate workshop, all you need to go along with the delightful bungalow located on the property. \$269,900.



APPLE ORCHARD

Very private custom built estate home on 47 acres. Full apple orchard operation. Main floor in-law apt. plus basement apt. and trailer on property. \$664,000.