

ROYAL LEPAGE

Please call regarding our services and competitive rates

878-8101

388 Main Street E., Milton

Royal LePage Real Estate Services Ltd.

* Sales Representative ** Associate Broker

RES—The Canadian Champion, Wednesday, July 6, 1994



\$158,500

Do it Now—Call to see this 3-Plus bdrm., 2 storey with finished rec room. Barbara Crowe**



\$201,900

Woodward Ave. Brick fam. home, 3 plus 1 bdrm., fam. rm. & MBR on main fl. Fin. rec. rm., wood burning F.P., dbl. car gar., lg. mature lot. A Lair-Costigan*



\$209,900

All brick 3 bdrm. model with ceramic foyer and kitchen. Walkout from kitchen to deck. Norma or Ed Proveau*



\$267,500

Gorgeous 10 acre property and charming 3 bdrm. home with new sunroom addition, walkout from lower level, 3 garages ++. Petra Schwabe*



\$399,000

Set in the country but only mins. from town. Multi-levels offer spacious living space. 10 acres offer breathing space. Phone to view.



\$335,000

Country executive home 10 rolling acres, 5 bdrms., gorgeous greenhouse kitchen, new m.f. fl. inlaw suite, pool, barn, etc. Petra Schwabe*



\$385,000

Country executive home 10 rolling acres, 5 bdrms., gorgeous greenhouse kitchen, new m.f. fl. inlaw suite, pool, barn, etc. Petra Schwabe*



\$279,000

Beautiful bungalow on 1 acre, 3-4 bdrms., 3 baths, main floor family room, nicely finished bgrt. with sep. entrance, 25' x 40' workshop Petra Schwabe*



\$274,900

If you love to cook — imagine this! New greenhouse kit. w gas range, walkout to wrap-around deck. Call Sandi Kinsale* to view



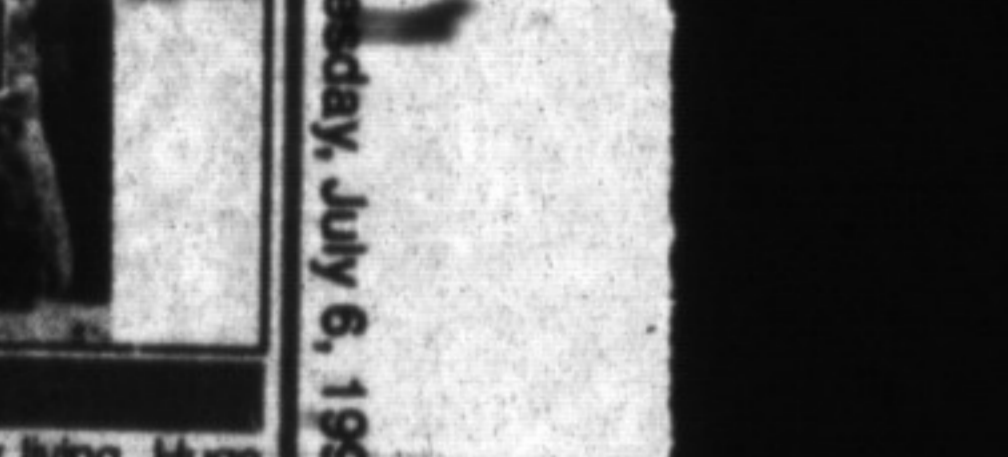
\$124,900

Attractive 3 bdrm. townhome in good complex. Low fees and recreation facilities. Please ask for Ross Runnals**



\$232,000

Spacious & spotless, over 2200 sq. ft. of family living. Huge backyard, close to schools plus set in a great neighbourhood.



\$474,000

A gorgeous well-appointed home set on 2 manicured acres in prestigious Ennisclaire Woods, mins. from Campbellville.



\$249,900

14 Acres with pond and stream. 3-4 bdrms. Cedar home, 2 storey, 5 minutes to 401. Denzil Lawrence*



\$269,000

Hobby farm—immaculate 3 bdrm. home, lots of upgrades; fin. basement, hot tub, ing. pool, barn, 2 rolling acres, move-in condition. Denzil Lawrence*



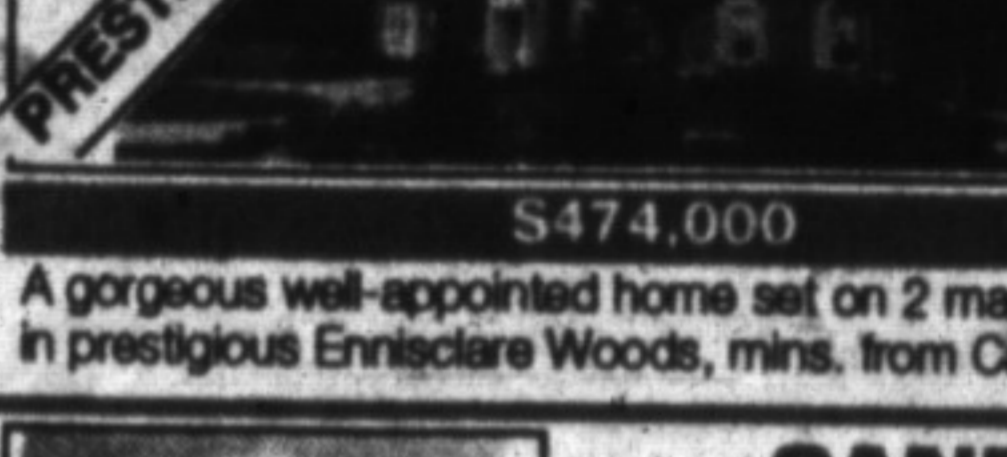
\$232,900

Location, space and amenities—this popular Laurier built model offers them all! Home sits on a nicely landscaped lot on White Dr. Barb Lalfoche*



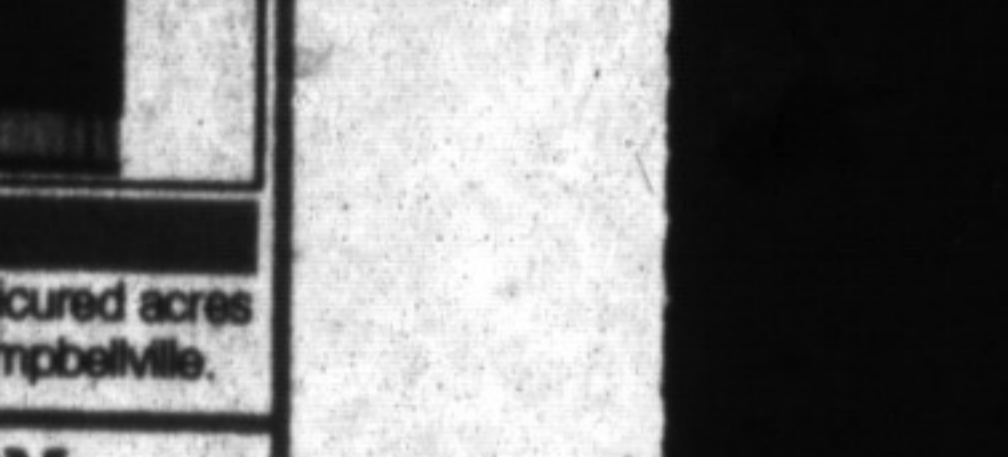
\$121,500

Perfect starter—eat-in kitchen, 3 bedrooms, extra bathroom, backs onto parkland. Call Barbara Ramsden*



\$244,500

23 Acres park-like setting, partly wooded, stream and pond. Area nice and private. Denzil Lawrence*



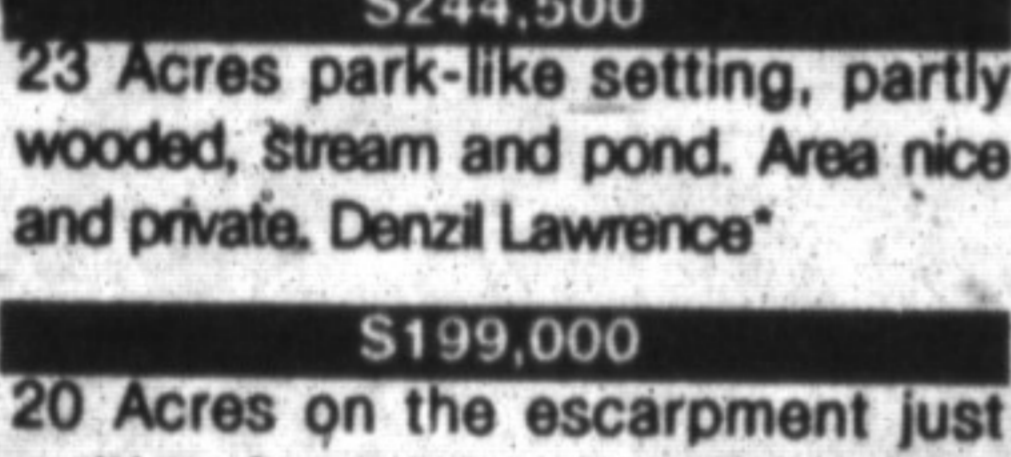
\$199,000

20 Acres on the escarpment just waiting for your building plans to become a reality. For more information call Angela Silcock*



\$164,900

Just move into this lovely 3+ bdrm. home w M.F. fam. rm. & 2 w/o's to a very private large back yard. Angela Silcock*



\$72,000 — BUSINESS FOR SALE

Well established electronics sales and service. Vendor will stay to assist new owner. Please call Ross Runnals**



LAND TO BUILD ON

102 ACRES — \$340,000. Mins. from 401. 90 ACRES — \$750,000, south of 401. 35 ACRES + BARN — 1/3 wooded with stream & pond. An ideal property for an estate home. \$255,000. Norma or Ed Proveau*



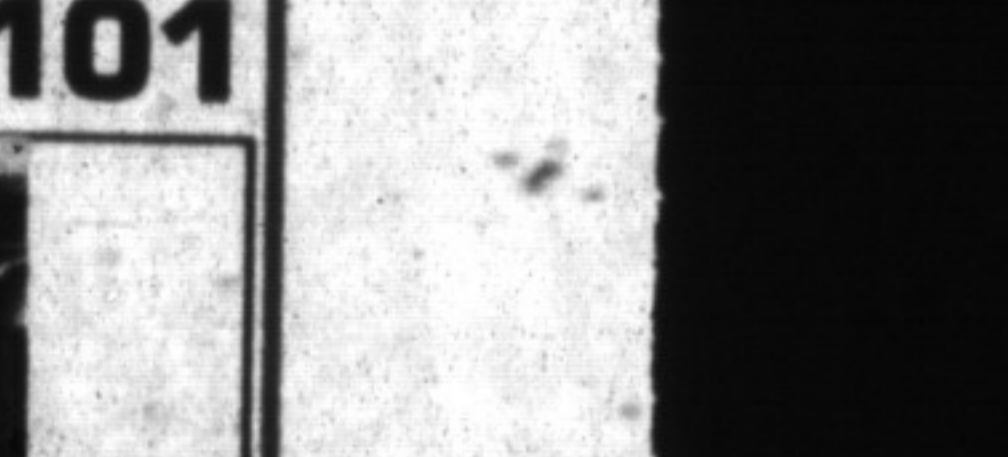
\$317,000

No. 2 schoolhouse renovated to maintain its historical features. For elegant entertaining. Norma or Ed Proveau*



\$295,000

Charming in move-in condition. Long winding laneway flanked by trees, flowerbeds & shrubs. Flawless Pine flrs., stained glass windows & cozy F.P. in D.R./F.R. addition.



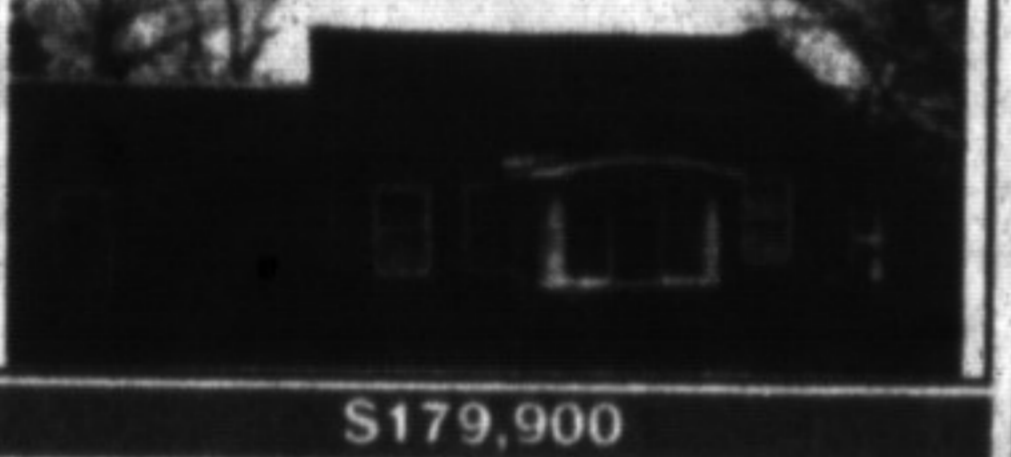
\$254,000

Captivating impression both inside & out. Beautiful home with numerous renovations, + additional sep. master wing, 20x40' detached workshop, dbl. car gar. + more on picturesque 1.29 acre lot. Eve Gooding*



\$179,900

When ordinary isn't enough & for the individual who appreciates century homes, you'll fall in love. Several renovations including roof, soffits, eaves, windows & furnace have taken place. Call Eve Gooding* for details.



\$116,900

Exceptional in every detail, so clean & neutrally decorated, upgraded gray bedroom, 4 appliances included. Eat-in kit., w/o from L.R. Eve Gooding*



\$189,900

Purchase with relatives & live inexpensively. Occupy 1/3 yourself; in-laws can occupy self-contained basement. 1/3 for rest of relatives. Perfect for close family or thrifty shopper. Eve Gooding*



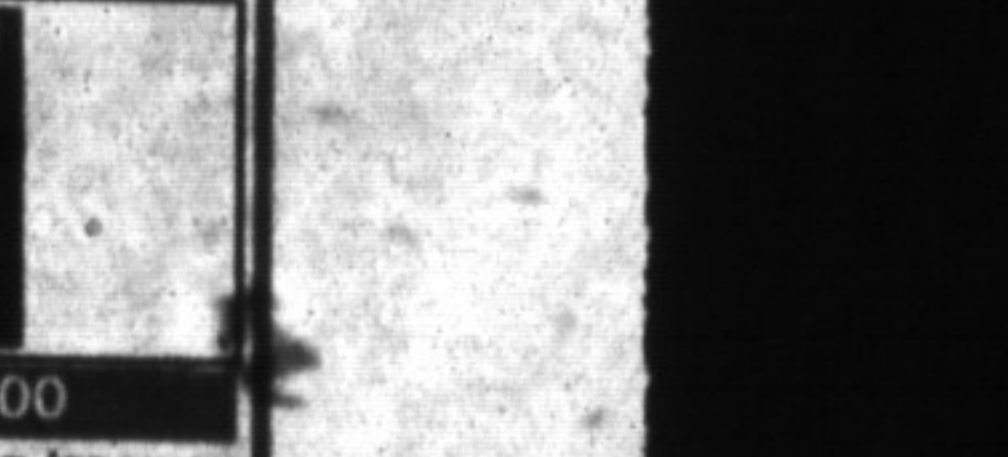
\$295,000

Charming in move-in condition. Long winding laneway flanked by trees, flowerbeds & shrubs. Flawless Pine flrs., stained glass windows & cozy F.P. in D.R./F.R. addition.



\$295,000

Charming in move-in condition. Long winding laneway flanked by trees, flowerbeds & shrubs. Flawless Pine flrs., stained glass windows & cozy F.P. in D.R./F.R. addition.



\$295,000

Charming in move-in condition. Long winding laneway flanked by trees, flowerbeds & shrubs. Flawless Pine flrs., stained glass windows & cozy F.P. in D.R./F.R. addition.

THE COUNTRY CORNER

INGE WINTHER*

878-8101

Specializing in Country Properties for 21 years



Vendor will hold first mortgage up to 60% of purchase price at 7% for 2 years for qualified buyer. Stunning rural estate, luxurious 4700 sq. ft. Georgian plus sep. maid's quarters, pool, 2.4 acres.



Carefully restored 1869 Ontario House with lg. wing set on manicured grounds with mature maples, 2 lg. ponds, stream & pool. 2 bedroom bungalow for staff, stable, 72 partly wooded acres.



Simplicity & charm throughout this pioneer home with lg. principal rooms. Massive logs & stone F.P.'s, Pine flrs., drs., & trim. Nestled on 9 wooded acs. Prof. landscaped w/pool & 2 ponds. \$649,000.



\$299,900. Gracious multi-gabled Canadiana featuring lg. living rm. with F.P., lg. sep. dining rm., family rm. with Franklin stove, country kitchen & lg. bdrms. Set on spectacular 1.23 acre.



Prestigious 3700 sq. ft. (plus fin. lower level), 2 storey, custom built for vendor. Large rooms & high ceilings throughout. Numerous extras. Set on prof. landscaped grounds with deck & patio. \$469,000.



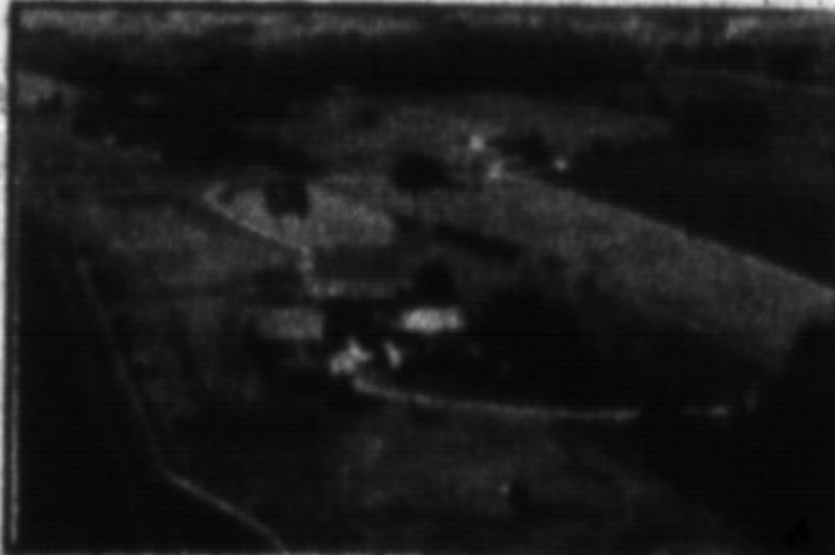
A Napier Simpson restored Canadiana with large newer wing set in a park-like setting with pool, cabana & barn. 91 scenic acs. backing onto conservation woodlands just outside Campbellville.



Beautifully restored red brick farmhouse with high ceilings & original woodwork throughout. Nestled among mature trees on 75 scenic acres with creek and 2 ponds. Separate garage, guest house & barn \$540,000.



Prestigious stone manor, large principal rooms and high ceilings. Front and back staircase, separate maid's quarters, etc. Nestled on professionally landscaped 5 acre lot in Campbellville. Now \$639,000.



Century stone house, 2 bedroom bungalow, coach house with 2 bedroom apartment. Barns, private golf course, 3 acre pond, falls and stream. 5 reg. 1 acre lots included. 1.9 acres, Scenic/Rockwood. \$795,000.

VIRGINIA BRAZEAU*

R.N.

Sales Representative

878-8101

(TOR.) 338-4838

It's good to know someone who knows and cares



EAST OF TRAFALGAR RD. New block garage 30' x 60' w/2 lg. offices. Farmhouse w/all new windows, shingles & siding. Located near Oakville/ Miss. border. Fantastic investment opportunity. Call for details.



COUNTRY ACRE \$259,000. W/ stream at rear of property. Manicured lawns, mature trees. Lovely home w lg. eat-in kitchen, fireplace, hardwood floors etc. A pleasure to view. There's a golf course across the road! Just call!



LUXURY LIVING. This beautiful home with white kit./fam. rm., indoor pool, 4 baths, 5 bdrms. & much more is just waiting for your inspection. Come & see what "Pride of ownership" looks like. \$469,000.



YOUR OWN PARK W/GARDENS. Lovely stone home on one of the nicest properties you'll find! Custom built 13 yrs. ago, this home boasts early French Can. architecture, 4 bdrms., office, huge 2 storey family room. \$390,000.



HOBBY/HORSE LOVERS. Raised brick bung. w/vaulted ceilings, walkout basement & huge country kit. w/oak cupboards & ceramic flrs. Barn, pond, paddocks as well as trails thru woods. It's ideal — Only \$298,000.



VALUE PLUS! \$269,000. Executive bungalow, 4 bedrooms, 3 baths, hardwood floors, hot tub barn/workshop & woods. This property has it all. Just call for directions.



REDUCED. \$379,000 - 24.7 ACRES. Bi-level bungalow w/full nanny suite & sliding doors at ground level. Main level has vaulted ceilings, stone F.P. in fam. rm. & huge kitchen, 2 car garage, barn/workshop + greenhouse w/retail business. Call for details.



COUNTRY. \$179,900 SOUTH OF TOWN. What a pretty setting for this charming bungalow! 4 bdrms., fam. rm., F.P., lg. country kit., new furnace, central air & a beautiful lot. Come see for yourself.



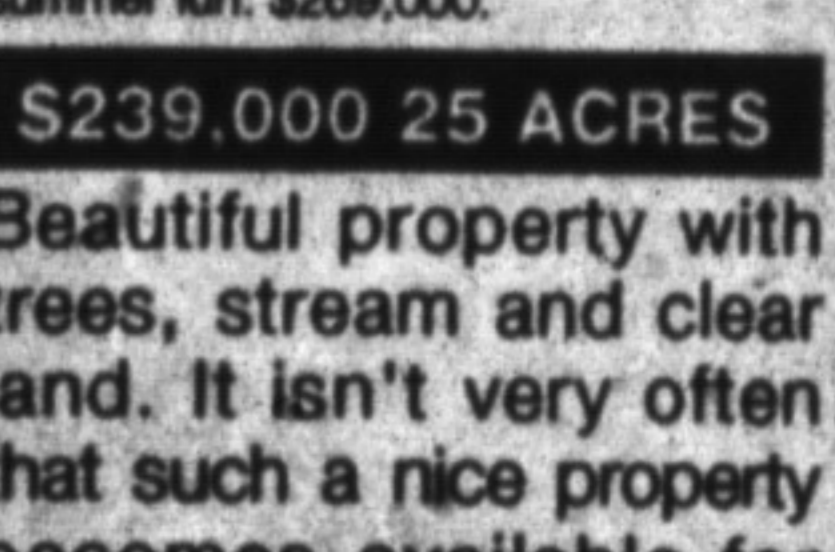
POOL. GOWLAND CRESCENT. New carpet & neutral decor make this executive bungalow on executive street worth your viewing. Extra large lot, fenced yard & an in-ground pool for summer fun. \$269,000.



REDUCED. 5 ACRES \$379,000. E. of Milton w/quick access to 401/James Snow Pkwy. Workshop/garage 35' x 45', pond & a quality renovated spec. home. An opportunity like this doesn't come often. Call.



OAKVILLE/MISSISSAUGA. ONLY \$299,000 — COUNTRY!!! Fabulous brick bungalow in immaculate condition. Basement completely at ground level at rear. 2 F.P.'s, new furnace, beautiful flowerbeds & trees. Insist! Call for details.



\$239,000 25 ACRES. Beautiful property with trees, stream and clear land. It isn't very often that such a nice property becomes available for sale with this great location. Ideal for the 401 commuter. Just call!