

The Canadian Champion

Best Homes



\$232,000

ROYAL LePAGE

SPACIOUS AND SPOTLESS.

Over 2200 sq. ft. of family living. Huge backyard, close to schools plus set in a great neighbourhood.

**ROYAL LEPAGE REAL ESTATE SERVICES LTD
JOYCE HAGEVIK 878-8101**

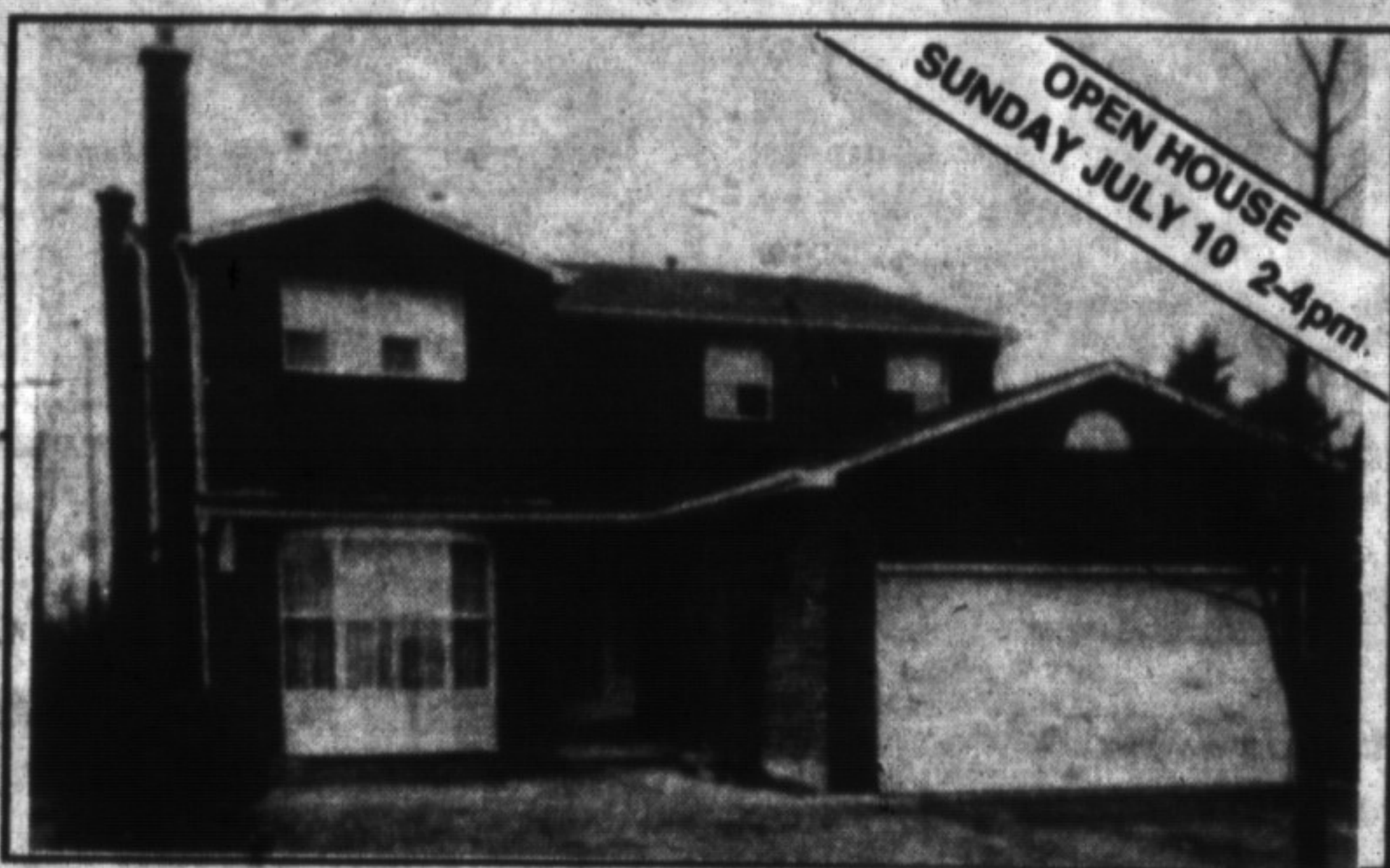


\$189,500

REALTY WORLD

SUPER FAMILY HOME IN QUIET NEIGHBOURHOOD Close to schools & parks. Lovely landscaping, above ground pool, finished basement with F/P & nicely decorated inside. Want to know more?

**REALTY WORLD - W.J. McCRUDDEN REAL ESTATE
BARBARA MALLALIEU 876-1133**



\$226,900

RE/MAX

THIS ONE HAS IT ALL.

4 Bedrooms, 3 bathrooms, 2 fireplaces, and 1 greenhouse kitchen. Features extra large recreation room. Thinking of upgrading? This is definitely worth your consideration.

**REMAX MILTOWNE REALTY CORP.
RON FURIK 878-7777**



\$299,900

RE/MAX

FOR THE ENTREPRENEUR who wants a home/business set-up. The C-1 zoning allows for many uses including retail and office. Featuring a separate building, large paved parking lot and a second floor apartment to offset costs. This Main Street location is offered for only \$299,900

**REMAX MILTOWNE REALTY CORP.
PAUL PAGE 878-7777**

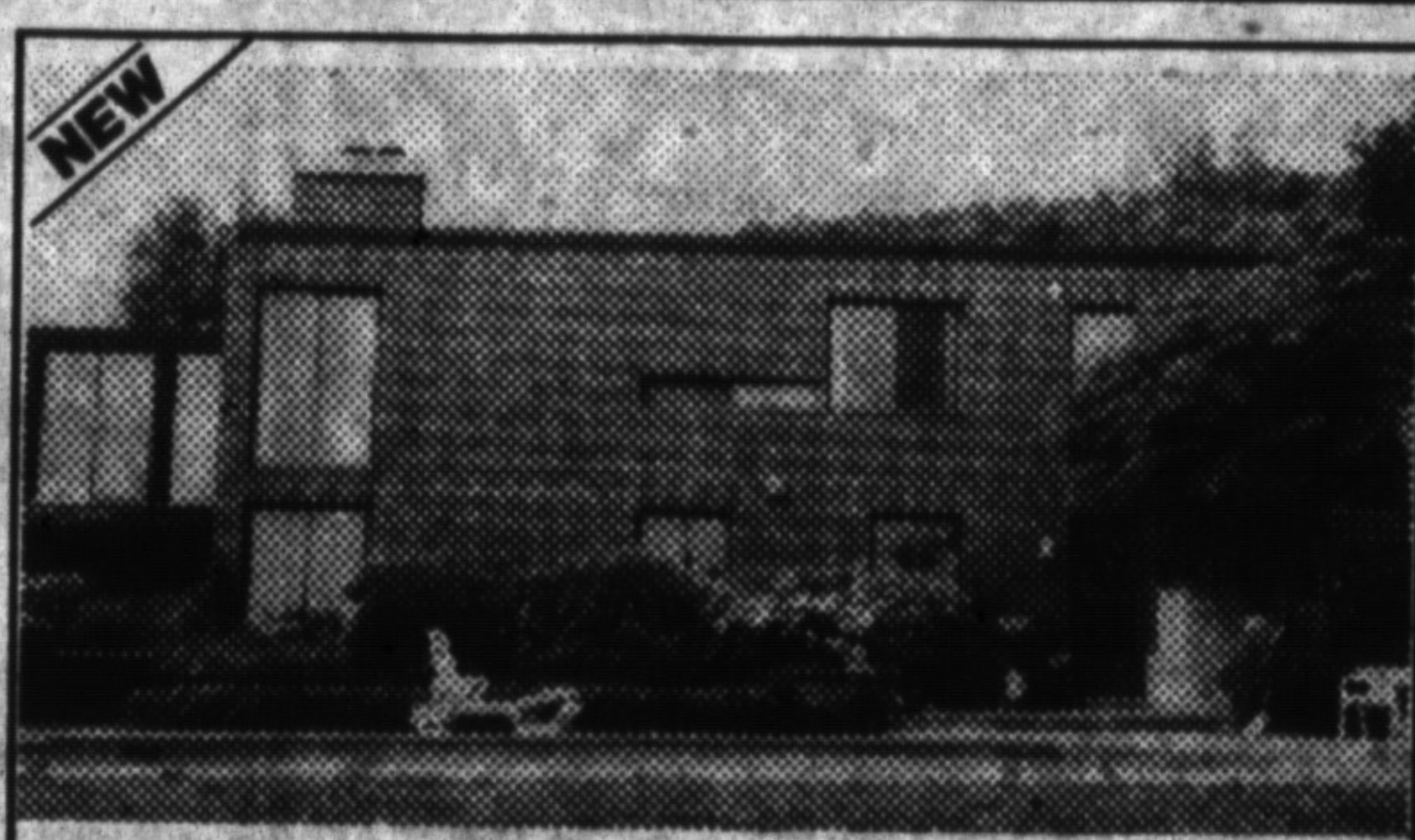


\$257,900

ADVANTAGE PLUS REALTY INC.

IF YOU NEED THE ROOM - we got the place. Large 4+ bedroom home has finished basement with extra 3 piece bath, 2 bedrooms, rec. room and large storage area. Formal living room has French doors, main floor family room, and as an extra bonus we will even throw in a large inground pool.

**ADVANTAGE PLUS NEWELL REALTY INC.
AUDREY NEWELL 878-4444**



\$699,000

Countrywide®

COUNTRY ESTATE ON ESCARPMENT- Executive estate on 3.38 acres nestled on beautiful Niagara escarpment. Unique modern design w/ enchanting atrium in centre. Ideal for entertaining. In-ground pool & prof. landscaping.

**COUNTRYWIDE CAMPBELLVILLE REALTY INC.
FLORENCE WALTER 864-2294**