



GLEN THOMAS

Bus. 878-7777
Res. 876-0987

Sales Representative



Dedicated to getting top dollar
for your home!!!

Call **GLEN or GARY**



Gary Thomas
Broker/Owner
878-7777
Tor. Line 825-4485
Res. 875-3700



"TROPHY OF A TOWNHOUSE"
Well decorated 3 Bdrm. townhouse in one of Milton's finest complexes. This is a must see.
GLEN THOMAS\$129,500



"A PLACE CALLED HOME"
Beautiful home with solid brick construction. Big yard and a new roof top. To view call:
GLEN THOMAS.....\$174,900



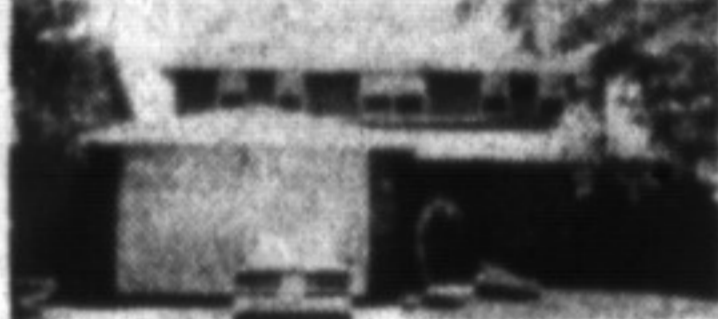
"WAKE UP TO COUNTRY SUN"
Huge lot, with huge possibilities. In lovely Kilbride
GARY THOMAS\$157,500



"ENDLESS POSSIBILITY"
Want to own a farm? Listen to this. 4 acre farm with huge barn, drive, shed & in-ground pool.
GARY THOMAS...ONLY \$225,000



SCOTT B. PRIOR
Associate Broker
24 Hour Paging
878-7777



EXECUTIVE HOME

Best describes this beautiful four bedroom home on Robertson Cres. With features like a separate dining room, oak eat-in kitchen with W/O, main floor fam. rm. with fireplace, huge master bedroom with full ensuite, mature backyard and more. Asking \$268,900



HUGE LOT

Is just one of the features of this beautiful three bedroom home on a 62' x 162' lot, not to mention an in-ground pool with custom pressure treated deck, central air, freshly decorated thru-out. Asking \$236,900. Please ask for Scott.



DON'T WAIT

Townhomes located on the riverine don't last long... This great home has just been beautifully redecorated. Central air, finished rec. rm. and more. Asking \$139,900.



FOR SALE/LEASE

6,000 sq. ft. on one acre on Main St. Milton. 1000 sq. ft. retail, high ceilings, 2 mezzanines, 16' drive in doors & a foundation in for another 9,000sq. ft. Asking \$695,000 or \$4.95 sq. ft.



FOR LEASE/COMMERCIAL

Milton's busiest corner, 3,200-2,700 or both. Asking \$14.00 sq. ft. For more details call Scott



FOR SALE

10,000 sq. ft., 3,00 sq. ft. office zoned. Across from Karmax plant. Asking \$639,900



PROFESSIONAL OFFICE SPACE

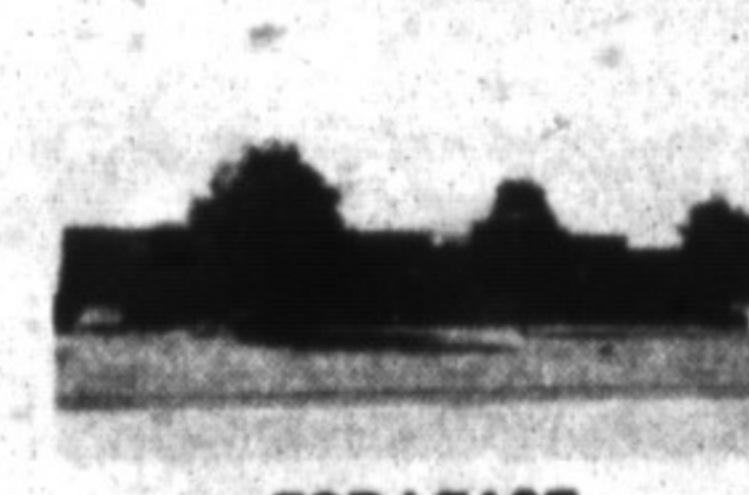
Starting at \$250.00 a month for 100 sq. ft. up to 2,700 sq. ft. available in many different sizes. Competitive rates.



COUNTRY ESTATE

Located on 8 acres this large executive type home features an indoor swimming pool, finished rec. room, fireplace thru-out, formal living & dining rooms. Please ask for Scott B. Prior. Asking \$448,000

This great condo unit features a great view of Lake Ontario. Nicely furnished. Many other features. Asking \$103,900



FOR LEASE

22,000 sq. ft., 2,000 sq. ft. high ceilings. 2.6 acres Bronte St. S., 2,800 sq. ft. of offices, 16' ft. ceiling, dock 6', drive in door. Asking \$3.00/sq. ft.



FOR LEASE

28,000 sq. ft., 2,000 sq. ft. high ceilings. 2 acres outside storage, Bronte St. N. Milton, 16' doors, plenty of hydro. Asking \$3.00 sq. ft.



FOR LEASE/COMMERCIAL

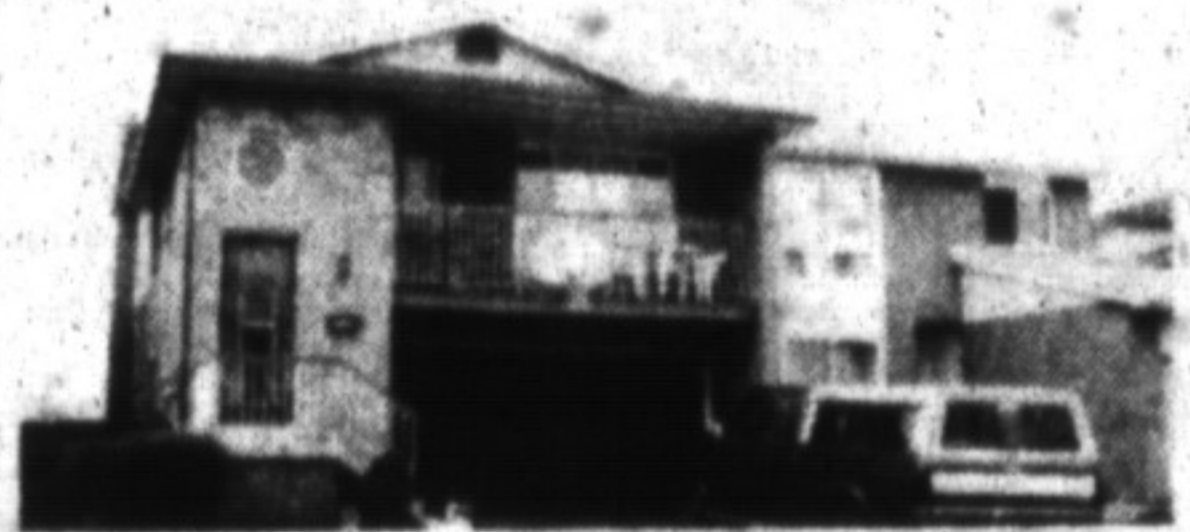
4,000 sq. ft., of clean industrial with dock loading. Beautifully finished office/showroom. Asking \$4.25 sq. ft.



FOR LEASE/COMMERCIAL

1,100 sq. ft. or 2,100 sq. ft. located at 400 Main St. beside C.I.B.C. Lending Centre. Asking \$14.00 sq. ft.

JEAN SNOWDEN
SALES REPRESENTATIVE
878-7777 Office
878-3155 Res.



BIG FAMILY, LIMITED BUDGET?

This may be the biggest house for the money on the market in Milton. Check these features: backs onto parkland, big kitchen with new dishwasher, balcony off the large living room, fourth bedroom or den, family room, rec room, 2 fireplaces, double garage and more, all for: **\$179,900!**

NEED TO MOVE SOON?

A quick closing is possible on this 3-bedroom townhome which backs to a park area. Features: separate dining room, garage & rec room. Convenient to schools and shopping. **\$118,900.**



IT WOULD BE A CRIME ...

If you missed this one. Large eat-in kitchen, extra wide drive for ample parking, fireplace, 4th bedroom or den plus rec. room. **\$159,900**

*If you are thinking
of buying or selling,
I can help*



RON FURIK
Sales Representative
Office 878-7777
Res. 878-3337
Tor. Line 825-4485



WHAT ELSE DO YOU NEED?

This one has it all: 4 bdrms., 3 baths, 2 fireplaces and 1 greenhouse kitchen are only some of the fine features. For your personal tour of this well maintained home, ask for Ron. \$234,900.



FLEXIBLE CLOSING

Situated 5 minutes east of Milton, this 2 storey, 4 bedroom home offers 2 1/2 baths, main floor laundry, 2 fireplaces, main floor office/den plus many extras. Just under an acre. Now \$239,900. This one is worth your consideration.

LOCATION... AND MORE!

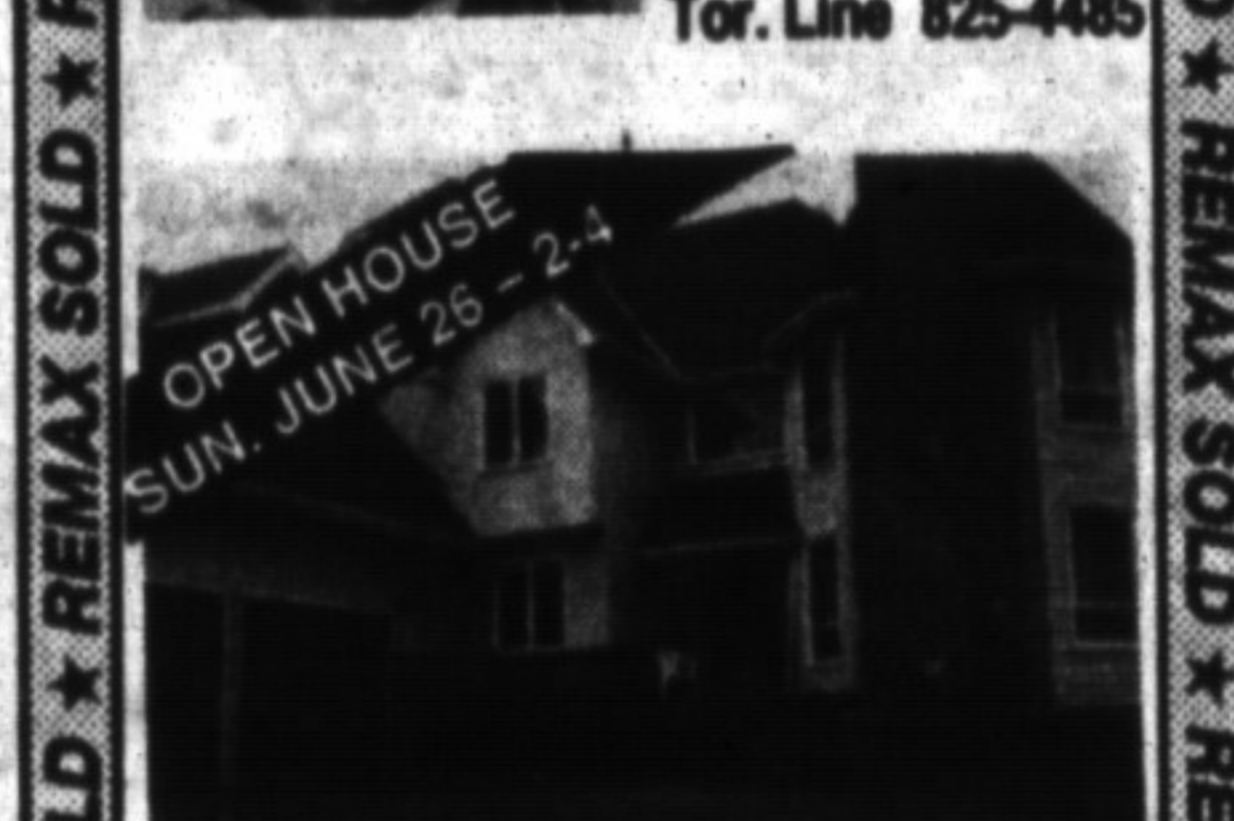
Best describes this attractive property. 3 bedroom bungalow with large living room, large greenhouse kitchen, separate entrance to second living quarters, pole barn. Owner built home. At \$299,000 this home must be seen to be appreciated. Just over an acre.



★ REMAX SOLD ★ REMAX SOLD ★



SHERYL GRAY
Sales Representative
Office: 878-7777
Res. 875-1121
Tor. Line 825-4485



SUNDAY JUNE 26TH 2-4 PM
11220 Guelph Line, Brookville

A HOME TO BUILD A DREAM ON

Come out to see this lovely custom-built home in "Brookville Estates" - 3,143 sq. ft., 4 bedrooms, formal dining room, 2 fireplaces, C/A, C/V, Intercom system, skylights. All this and more nestled on 2.03 acres. \$374,000. Call Sheryl Gray at (905)878-7777 or Tor. Line 825-4485 for further info.



NEW LISTING

\$121,900

Call today for further info. on newly listed townhouse at 341 Wilson. New kitchen and hall flooring, finished basement with bar, fenced yard. Call 878-7777 and ask for Sheryl.

★ REMAX SOLD ★ REMAX SOLD ★

GARY THOMAS
Broker/Owner

- Heather Ashbee878-7777
- Carol M. Brooks875-0067
- Carole Budworth878-8545
- Ron Furik878-3337
- Sheryl Gray875-1121
- Clayton Hackenbrook...875-0771
- Richard Hierman878-5806
- Betty Ingle827-4286
- Sharon Kerley854-0474
- Joe Manchisi875-0163
- Lindsay McLaren854-2451
- Maurice Miljour876-4577
- Lloyd Moore(519) 853-3158
- Mike Morgan878-8093
- Paul Page878-2995
- John (J.P.) Pears878-6859
- Phil Prestidge878-6924
- Scott B. Prior878-3686
- James Snow878-2172
- Jean Snowden878-3155
- Anne Taylor854-9833
- Glen Thomas876-0987
- Al Volpe878-7777
- Katrina Walton878-1588