

# MILTOWNE COLLISION

INSURANCE  
PREFERRED  
8212 4th Line  
Milton, Ont.  
878-6919

# The Canadian Champion Weekend

60958

165

**SOAPBERRY S.H.O.P.**  
Special Teachers' Gifts & Graduate Gifts  
MILTON MALL 878-6187

Volume 10, Number 8

FRIDAY JUNE 24, 1994

Serving Milton, Ontario 75¢

32

## NEWSLINES

### Smashing show on weekend

This weekend the Milton Fair Grounds will come alive both Friday and Saturday night with a truck pull on Friday (June 24) and a demolition derby Saturday (June 25).

The truck pull, which includes 4x4s, gets underway Friday at 7:30 p.m.

Saturday's demolition derby will also start at 7:30 p.m.

Admission for each event is \$5 for adults and \$3 for children (free admission for those under 6 years).

For information call the Halton Agricultural Society at 878-5689.

### Big BBQ for Big Brothers, Sisters

Volunteers from Big Brothers of Halton and Big Sisters of Oakville plan to cook up a storm in Milton tomorrow (Saturday).

IGA in White Oaks Plaza on Bronte Street presents the 'Our Compliments Backyard BBQ' from 10 a.m. to 3 p.m.

The local barbecue is part of a province-wide fundraiser for the two agencies. It involves 100 communities and promotes a selection of IGA store specialties.

### Beach update hotline is back

The Beach Hot Line is back. Starting today (Friday), the Halton Regional Health Department will advise you of the latest beach testing results.

In Milton, Kelso Conservation Area will be tested regularly.

The hotline, 825-6111, is open around the clock, seven days a week.

## INSIDE

**Graduate Special:** Know someone who graduated from school recently? Check out our special section.

- Opinion..... 6
- Dateline..... 16
- Sports..... 17-20
- Classified..... 21-23
- Real Estate... RE1-RE8

# Tab for water \$550 million

By ANGELA BLACKBURN  
*The Champion*

Financing the \$550 million Halton Urban Structure Plan (HUSP) will demand the participation of Halton Region, its area municipalities, the province and the private sector. Conventional municipal front-end financing alone would leave an initial \$200 million funding gap.

A three-model financing scenario — conventional, partnership or HUSP rejection — was before regional councillors at a special combined planning and public works/administration and finance committee meeting Wednesday.

Milton Mayor Gord Krantz, anxious to proceed with the plan that's been in the works eight years, said he'd move the 132-page financing report's 19 recommendations on to council for consideration.

However, a day crammed with committee meetings led to deferral of the HUSP financing debate until a special July 6 meeting.

The HUSP — formerly known as the Halton Urban Structure Review — is a broad-brush plan designed to cope with a population influx that could see Milton more than double in size by 2011 and rapid growth in north Oakville.

"We've come to a milestone with the Halton Urban Structure Review," said regional chief administrative officer John Burke of the \$3 million study.

Regional finance staff then presented their analysis of the plan's implementation costs.

Wednesday's financing report was the fourth and final section of phase two of the HUSP, and billed as one of the most significant portions by Mr. Burke.

"One thing that appears to have been concluded is that the traditional

• see WATER on page 9

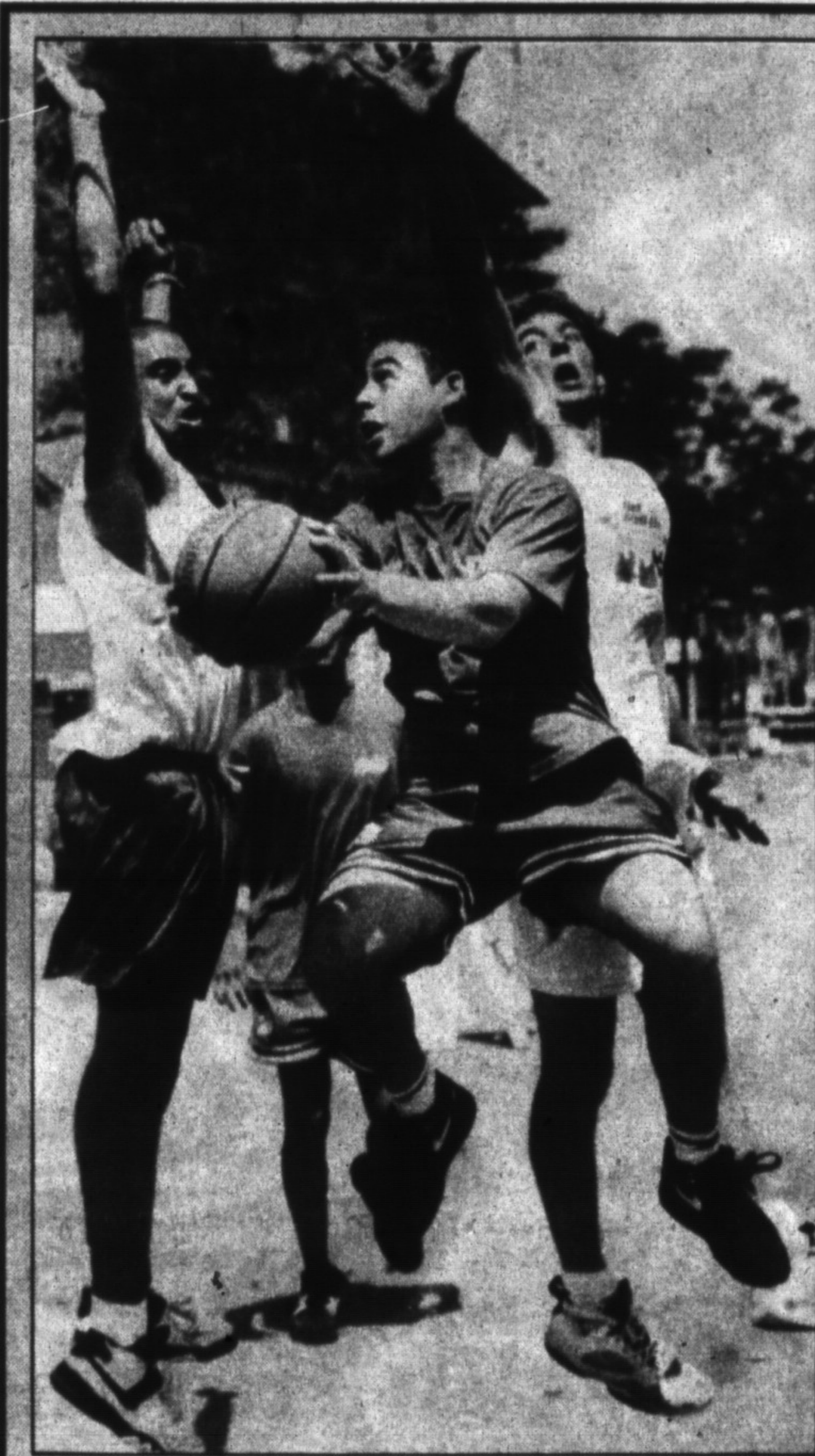


Photo by GRAHAM PAINE

## In your face

Bishop Reding Secondary School's Carlo Zoffranieri gets double-covered as he goes for a shot in the semifinals of the Three-on-Three Street Basketball championship during Main Street Moonlight Magic celebrations Saturday. The Reding team beat their opponents, Team #1, 15-9 to advance to the finals.



Michael Doulton

## Doulton will be here Monday

Michael Doulton, a goodwill ambassador for famous ceramic manufacturing company Royal Doulton, will return to Milton Monday.

The fifth-generation descendant of the company's founder will be on hand at Delacourts (Main and Martin streets) from 10 a.m. to 1 p.m. and 3-7 p.m.

Mr. Doulton, who appeared at the store three years ago, will be available to sign the latest Royal Doulton figure, 'Sharon.' Expected to be a collector's item, the figure costs \$350 and will only be for sale during his visit. He will also promote his book, 'Discovering Royal Doulton,' which sells for \$50.

Royal Doulton, owned by the conglomerate Pearson, represents one-third of the British ceramic industry.

The Royal Doulton Group comprises well-known consumer brand names Minton, Royal Crown Derby, Royal Albert and Beswick.

WHEN YOU WANT IT DONE RIGHT!

# GALLINGER

## COLLISION CENTRE

Ask About  
**OUR LIFETIME GUARANTEE**

• State of the Art Wedge Clamp • Unibody & Frame Straightening System  
• Spray Bake Downdraft Spray Booth • Computerized Estimates  
• Free Courtesy Car

**655 MAIN ST. E.**

**875-3673**