

ADVANTAGE PLUS #1

NEWELL REALTY INC.*

878-4444

*Reg. Licensee of Advantage Plus Realty Inc.

878-4444

IN SAVINGS

CHARM WITH A CAPITAL 'SEE'

\$215,900



Lovely 3 bdrm. backsplit is very eye appealing. Large L-shaped F.R. has cozy corner F.P. & lots of windows. Extra large eat-in kit. has lots of counter & cupboard space. Lrg. sep. L.R. has bow window. Big side deck has year round BBQ hut. To "See" call Chris.

A "HARVEST" OF FEATURES

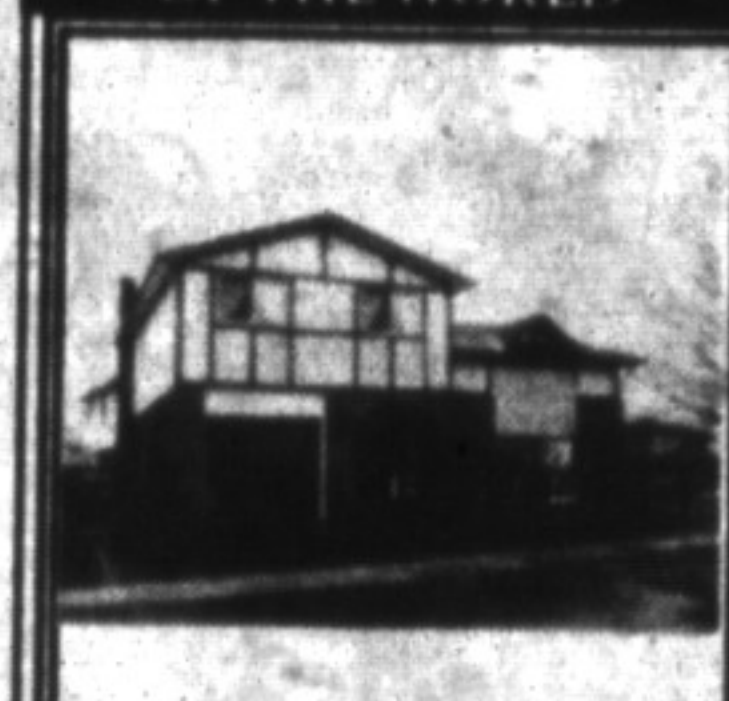
\$176,900



This lovely 2-story located on a quiet street, offers 4 bdrms. Tastefully decorated with wainscoting throughout. The large L.R. has a nice F.P. and w/o to the fenced back yard. Convenient door to garage. Bsm. is finished with rec. m. with 3 walls Pine. For more details please ask for Stewart.

LIVING ON TOP OF THE WORLD

\$167,500



Is how you will feel in this lovely 3-bedroom - sidesplit. Tasteful & neutral decor are highlighted by lots of natural light through big windows throughout. Some appliances included. To view the world from the top call Audrey.

FAY COURT!!

\$187,900



Three big bedrooms, woodstove, 2 kitchen windows, custom kitchen, wood floors, ceramics all new since 1990. Backyard is 85' wide, with assorted trees, herbs & roses. There's only been one other home available on Fay Court since 1990. Don't miss this rare gem.

TOO LATE

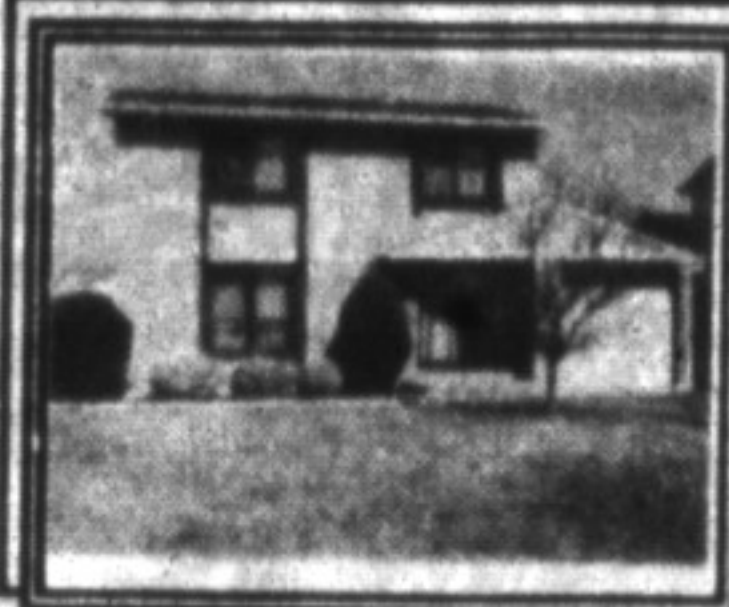
\$209,900



You Snooze, You Lose **SOLD & SAVED \$2,348.12** in 4 days

SPRING IS HERE

\$179,900



This 3 bdrm. link is waiting for a new owner. Large living room. Enlarged kitchen/dining room combo, has w/o to deck, patio and shed in fenced backyard. Some appls. incl. Call Chris or Audrey.

BACKYARD PLAYGROUND

\$175,900



Pool, sandbox, playground equipment, interlocking patio, lights, gardens, 3 bdrm. link in Timberlea. Tastefully decorated. Convenient side door to yard, w/o from D.R. What are you waiting for? Call Chris now.

CEILINGS THAT ROAR TO THE SKY

\$174,900



Vaulted ceilings make this 3 bdrm backsplit bigger than it looks from the outside. Two level bsm. has rec. m. with F.P., 4 pc. bath & work rm. Lots of storage. Lrg. eat-in kit. has w/o to deck. French drs. lead to spacious L-shaped L.R. D.R. combo.

A RIVER RUNNING THROUGH IT

\$225,000



A ravine with river. The home has been strategically placed to overlook this very pleasing view. 50 acres at only \$225,000. For details please ask for Stewart.

ENCHANTING COTTAGE

\$184,900



Built in 1856, this fine old house is located with other fine old homes. Original features include pine trim & Colonial style panel doors. Updates such as recent broadloom, windows and front & back doors. Call Audrey to view some history.

CLAUSTROPHOBIA?

\$439,000



Light and airy rooms soak up the sunshine. This Robertson built home has 3-car garage, 3 fireplaces, kitchen with built-in appliances, 4 bdrms., master ensuite has Jacuzzi tub.

NEAR MOUNTSBERG

\$299,000



10+ acres with woods & pond potential. Hot tub. Huge fireplace, 4 bdrms., lots of wood floors. Country seclusion with neighbours. Don't delay. Call Chris today.

LET NATURE SURROUND YOU

\$329,900



SOLD & SAVED \$5,392.80

A TOUCH OF CLASS

\$449,000



Lovely home on a court in the village must be seen! Open plan, 9' ceilings in bsm. & on main floor. Glorious ensuite with party-sized shower. Call Chris for your viewing of the Robertson-built beauty.

SERENITY, SECURITY, SPLENDOR

\$729,000



10+ acres secluded by bush & stream. Iron gates at the end of paved lane lead the way up to the 6 bdrm. Spanish style house. Large eat-in kit. has many built appls. Skylight over working area, w/o from kit. to deck overlooking grounds with view of stream. Lrg. master has ensuite with porcelain sinks, skylight & whirlpool tub.

3-STALL BARN

\$259,900



Holiday 4-bedroom home with big family room, dining room for 18-20; semi-finished basement, views of escarpment, etc. Call Audrey today.

APPLE OF YOUR EYE



\$199,900
Lovely home on 1/2 acre near Milton. Three bedrooms, separate dining room overlooks main floor family room. Long views of escarpment.

VACANT LAND

LOT FOR SALE \$174,900

Building permit available on 12.8 acre parcel. Central locations, close to Burlington, Guelph, Georgetown.

DRAFT PLAN APPROVED

7 ACRES IN FERGUS
For 40+ townhouses
\$1,360,000

3% REALTY COMMISSION

FOR LEASE

1500 sq. ft. MAIN STREET
Immediate Possession
\$7.00 + C.A.M.

CRAMPED NEED ROOM?

\$229,900
There's loads of elbow room in this spacious 4+ bdrm. home. 3 baths, main floor fam. rm. with F.P., ceramic tile in foyer. Basement is finished with many rooms. Call to view.

DO YOU WANT VIEWS?

\$239,000
We certainly have them here. On 2-1/2 acres, this bungalow is finished up and down. There is a 3-car garage and also all facilities for an R.V.

HIDE & SEEK

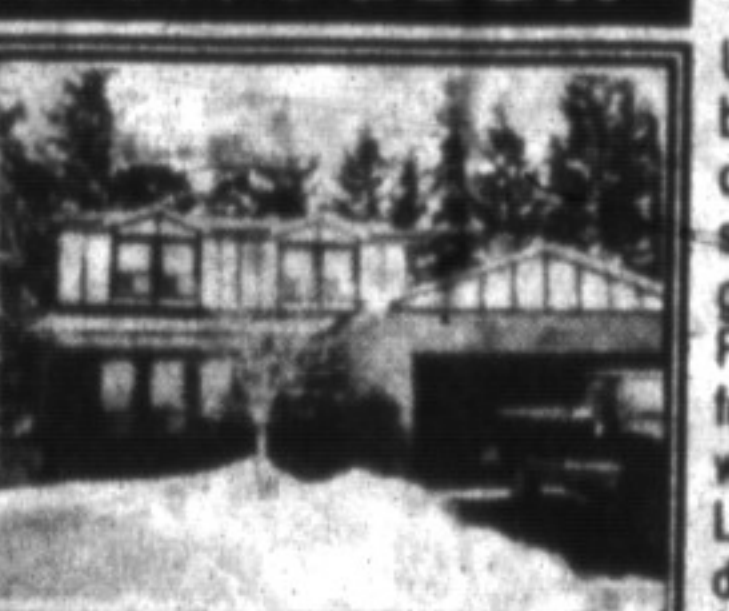
\$575,000



Hidden away on 8 acres, with 16 Mile Creek on 3 sides of the property. Seek what this 150 yr. old home has to offer. 1/2 pool, sauna, live-in kitchen, Florida room and so much more.

DON'T LOOK

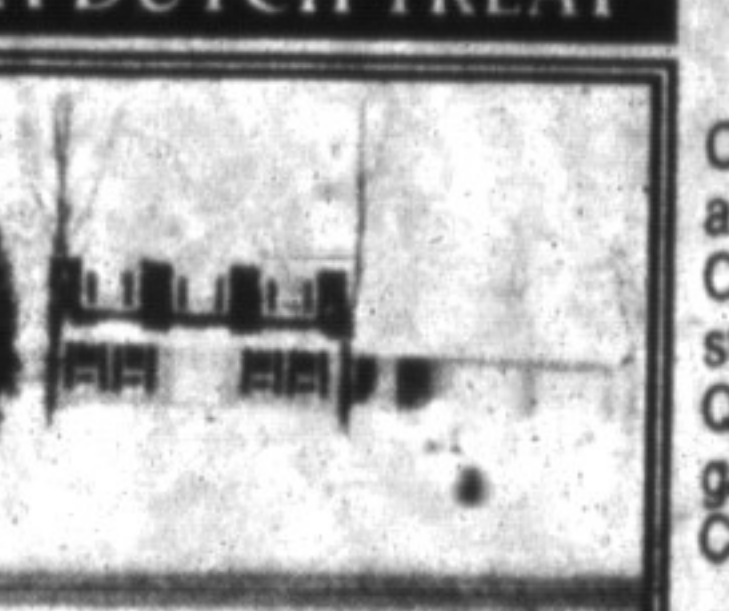
\$244,900



Unless you want 3+ bdrms. on a nice quiet cul-de-sac. Includes some appls., c.vac, garage door opener. French drs. separate L.R. from D.R. Lrg. fam. rm. with F.P., bay window. Lrg. eat-in kit. has w/o to deck. Call Audrey.

A DUTCH TREAT

\$289,900



On just over 1-1/2 acres this Dutch Colonial is close to store, school, park. Quality features galore. Deck, pond. Call for more.

THE KITCHEN

\$279,900



Is just too practical. Custom Oak cabinets (lots!), island with Jenn-Aire breakfast bar, b.i. oven, dbl. French doors to D.R., open through eat-in to sunken family room.

READY FOR YOU

\$127,000

Will be freshly painted & carpet replaced upon closing. 3 + 1 bedroom townhouse incl. 4 appliances. Great opportunity for investors. Close to Sheridan College for student renters.

CHILDS DRIVE

\$119,900

Near Milton Mall, this townhouse is ideal for the one-car family. Basement is mostly finished. Close to schools, parks, etc. Call Audrey.

CHILDS DRIVE

\$126,900

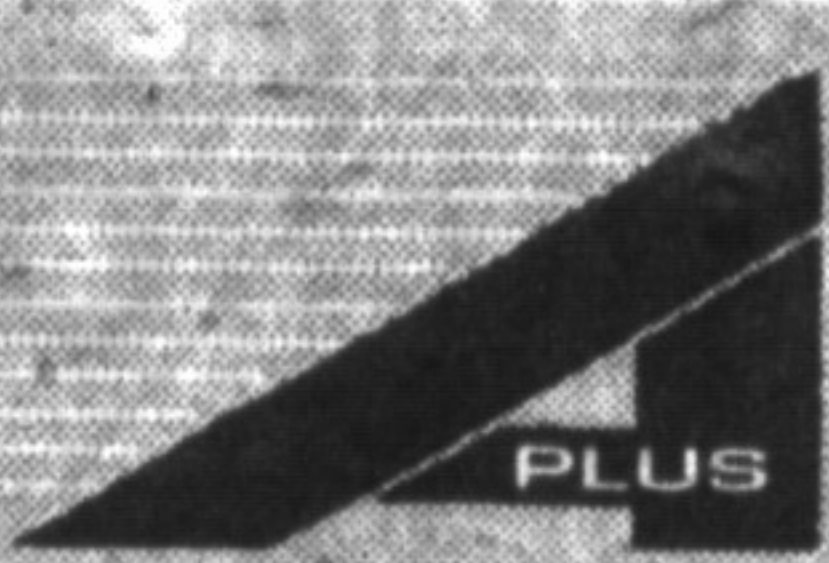
Walk to the mall and downtown. Basement mostly finished. Fenced back yard. Very nice unit.

"CONFEDERATION" LOG HOME

\$369,000



Custom built in 1987 on 10+ acres. Pond, forest and cleared land. Master bedroom is 26' x 18' w/ closet is 8'6" x 8'. Barzotti kitchen, Italian ceramics. Approx. 2200 sq. ft. Call Chris for details.



878-4444

1-800-668-3268

All savings based on 6% Commission

WHITE OAKS PLAZA, MILTON



AUDREY NEWELL
Broker



CHRIS NEWELL
Sales Representative



STEWART HADDON
Associate Broker