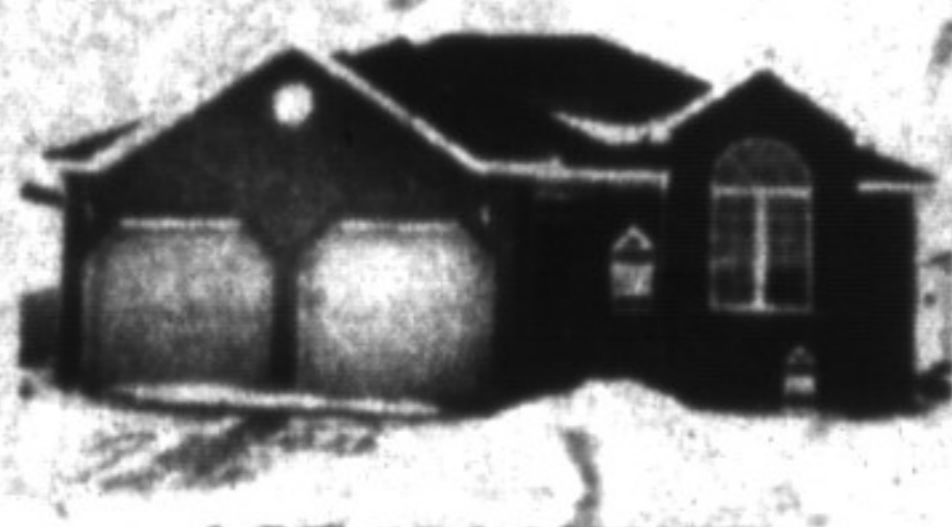




CAROL M. BROOKS

Sales Representative
OFFICE: 878-7777
RES: 875-0067
TOR. LINE: 825-4485



LOT #5 LAURIER

Brand New Charleston built home. 4 bedrooms, large family room, living room, dining room. Designer kitchen, many other upgrades.
\$229,000

VACANT LAND, 6TH LINE

155 Acres, beautiful rolling acreage, large frontage, many building sites.

ROCKWOOD FARM

The price is right. \$399,000. 5+ bdrm. home, tastefully renovated, good barn, suitable for the hobbyist or serious farmer.



\$169,000

Beautifully maintained home, many upgrades, 3 bdrms., main floor fam. room & fireplace. Nicely landscaped. Move-in condition.



CAMPBELLVILLE

Village setting, large, custom built home. Gourmet kitchen, 5+ bdrms., inlaw or nanny suite, hot tub & much more.



HEATHER ASHBE

Sales Representative
878-7777 854-0543
OFFICE RES.
Tor. Line: 825-4485



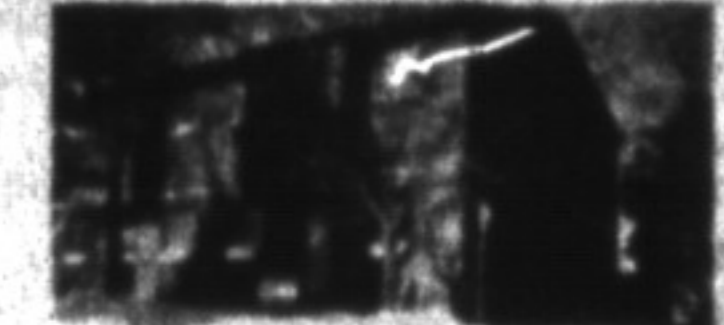
SPACIOUS CUSTOM BUNGALOW
With all the extras, upgraded carpet, French doors, oak kitchen, 4 bedrooms on 1 1/2 acre country lot. Interlocking drive & walk. Elaborate landscaping says welcome. \$328,000

Do you live on Robertson, Clements, or Randall? I have Qualified Buyers for a 2 storey, 4 bedroom, Executive Home. Call Me Now!



FLAUNT THIS LOCATION

Quiet Robertson Cres., private lot backing onto park. 4 bedrooms, greenhouse kitchen & more.
\$274,900.

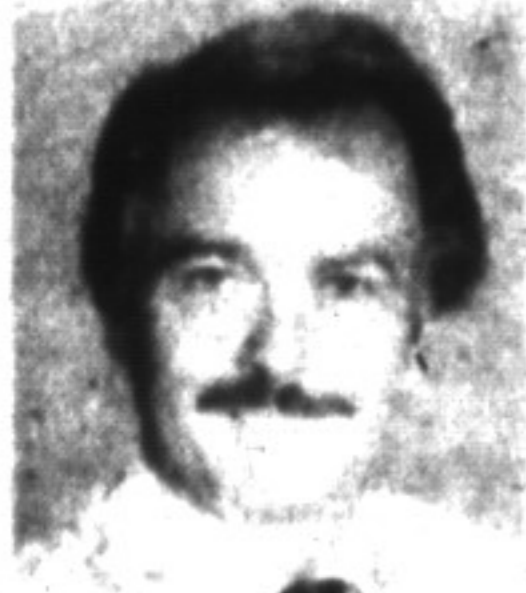


GREAT BEGINNINGS!
A bright, spacious end unit. Refurbished kitchen, new flooring, finished basement.
\$118,000.



155 MARY ST.
Commercial Zoning. \$325,000.

• RE/MAX FOR SALE • RE/MAX SOLD •



MOE MILJOUR
OFFICE 878-2365
HOME 876-4577
Broker Assoc.

YOUR LUCKY DAY!

Firm buyers for your 2 storey, 4 bedroom, finished basement in Timberlea. Summer closing date.

Different firm buyers for bungalow or backsplit in Dorset Park, nice condition with rec. room.

Call Maurice Miljour
Broker Assoc.

• RE/MAX FOR SALE • RE/MAX SOLD •



AL VOLPE
Sales Rep.
878-7777



RARE FIND

Nestled on 3 beautiful wooded acres, this 5 bdrm. bungalow offers you sunnm., over-size F.R., F.P., M. bdrm., 2 car garage with workshop or office, 3 baths. Year-round rapid running stream, and so much more. If you treasure a true country home. Well worth the drive.

SPORTSMEN'S RETREAT

122 acres of land on Derry/Hwy. 6 property. Suitable for hunting, fishing or sportsmen's club. Build dream home. Many spring fed ponds with assorted wildlife. Call Al Volpe to view. \$229,000.

FOR RENT

4 bdrm. house on 10 acres. Derry and Bell School Line.

\$169,900

Priced for sale 3 Bdrm. bungalow with finished bsmt: 3 bdrm., 4-3 pc. bath. 16 x 32 inground pool, central air/vac. air cleaner. Furnace replaced, most of all on a quiet Cr. Call for more info., won't last long.

INDUSTRIAL DRIVE MILTON

\$1,200,000 was reasonable for 2.9 acres industrial land M2, at one time. Today it is a thing of the past. 2.9 acres M2 industrial. \$429,000. Call Al Volpe for more info.



Gary Thomas
Broker/Owner
878-7777
Tor. Line 825-4485
Res. 875-3700

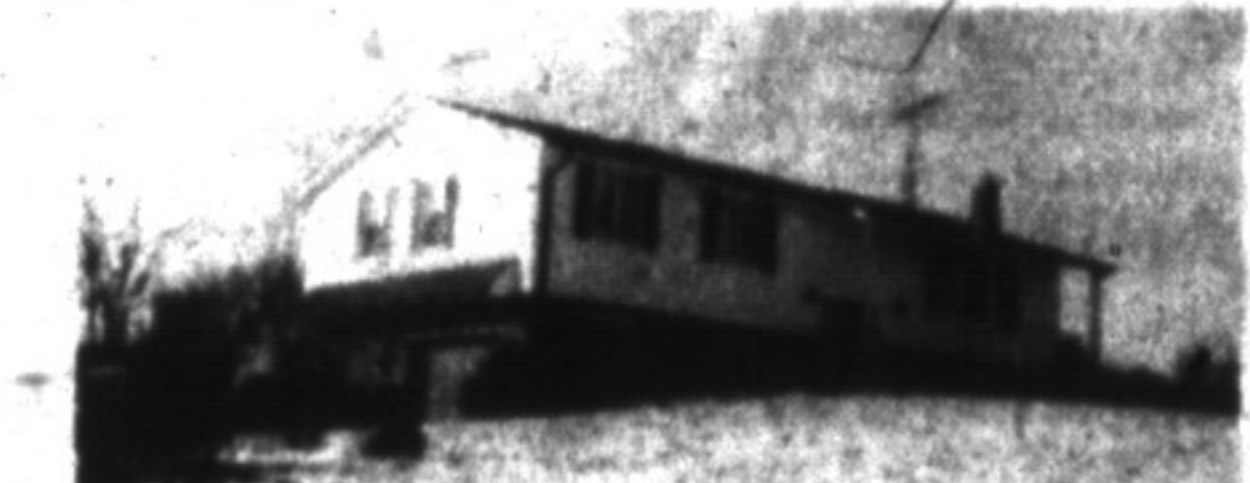


Without a doubt, one of Milton's finest properties. Beautiful brick home, (circa 1906) backing onto the Mill Pond. Features updated kitchen, cedar deck & a stunning glass addition overlooking the pond. Very unique opportunity.
Call Gary Thomas.....878-7777



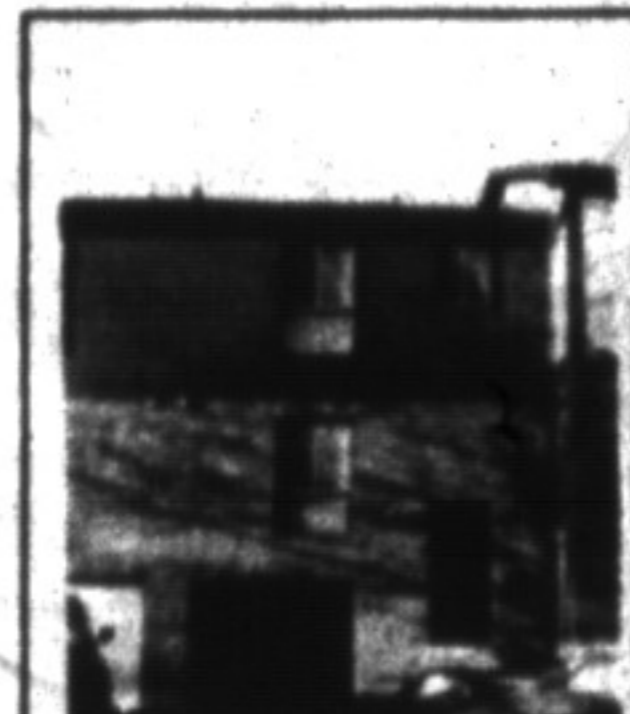
VINTAGE CHARLES

Character brick home located close to it all. Three bedrooms with potential for business or offices. To view call:
Call Gary Thomas\$235,000

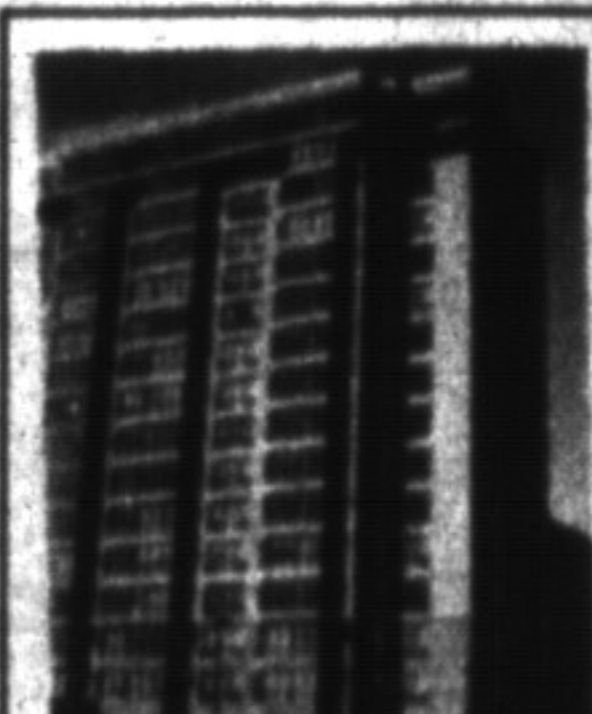


MILLION DOLLAR VIEW

Very fine bungalow situated on gorgeous 64 acres. Situated just west of Milton. Gorgeous escarpment view. \$625,000.
Call Gary Thomas878-7777



QUALITY & VALUE
Large 3-bedroom townhouse located in one of Milton's nicest complexes. Close to schools & shopping. To view call: Gary Thomas



VILLAGE PARC
Beautiful 2-bedroom unit in Milton's finest building. Features indoor swimming pool & fitness room, & 5 appliances. \$132,500.



BEAUTIFUL CUSTOM-BUILT
Ranch Bungalow. Surrounded by estate homes. Features in-law suite and new inground pool. \$349,000. Call Gary Thomas 878-7777.



PAUL PAGE
OFFICE 878-7777
RES. 878-2995

INDUSTRIAL COMMERCIAL & INVESTMENT PROPERTIES

<p>COMMERCIAL</p> <p>638 SQ.FT. Prime commercial location on Main St. Great for retail or office. \$395/mo. Call Paul.</p>	<p>OFFICE</p> <p>866 SQ.FT. OR 2,898 SQ. FT. Commercial space in busy plaza. Next to Country Market. Lots of parking. \$7.00 sq.ft. Call Paul.</p>	<p>RETAIL</p> <p>900 SQ.FT. UP TO 2,898 SQ.FT. Prime corner location with excellent Main St. exposure. Ideal for professional office or food service. Plenty of parking. Call Paul.</p>
<p>COMMERCIAL</p> <p>1200 SQ.FT. Office ready for immediate occupancy. Also 6,000 sq.ft. unit is available. Ideal for professional office. \$7.50/ sq. ft. Call Paul.</p>	<p>RETAIL</p> <p>1800 SQ.FT. Retail/Commercial space on Main Street. Ideal for food service / retail outlet / appliance store / TV & stereo. \$9.00 sq.ft. Call Paul.</p>	<p>FOR LEASE</p> <p>9150 SQ.FT. Ind. Factory, 20 ft. clear drive-in. Great for manufacturing or storage. Fenced yard. \$2.75 sq. ft. Call Paul.</p>

<p>FOR LEASE</p> <p>1440 SQ.FT. 240 sq. ft. new office, repair sheds, storage. \$3.50/ sq. ft. Call Paul.</p>	<p>FOR LEASE</p> <p>4000 TO 8000 SQ. FT. available with loading dock. Main street exposure office and washrooms. \$3.75/sq. ft. Call Paul.</p>	<p>BUILD TO SUIT</p> <p>If you are looking for a new industrial building from 6,000 sq.ft. to 60,000 sq.ft. give me a call. I have several building sites and developers who will build you a building at very competitive rate. Big or small, give me a call.</p>
<p>FOR LEASE</p> <p>2800 SQ.FT. Central location, drive in doors. Ideal for light industrial or storage. Gross rent \$2.75/sq.ft. Call Paul.</p>	<p>FOR SALE</p> <p>1564 TO 6256 SQ.FT. Condo units in prestigious building. Priced to sell from \$79,900. Call Paul.</p>	<p>FOR LEASE</p> <p>1984 SQ.FT. Located in exclusive industrial building. Rent includes T.M.I. Total \$675/mo. Call Paul.</p>
<p>FOR LEASE</p> <p>4740 SQ.FT. 300 sq.ft. of office. Drive in door. Very nice unit in clean industrial complex. Net rent \$3.75/sq.ft. Call Paul.</p>	<p>FOR LEASE</p> <p>2016 SQ.FT. Full loading dock. Good Main St. exposure, office. \$3.75/sq. ft. Call Paul.</p>	<p>FOR LEASE</p> <p>1200 SQ.FT. Commercial. Ideal for storage / office / repair shop. \$2.75/ sq. ft. Call Paul.</p>

LAND

3 ACRES, M-1 Zoning, this land is ready for building up to 60,000 sq.ft. Land is graded with top soil removed, storms are in, curbs and front landscaping is complete. For more information call Paul.

80 ACRES, This land is part of the future urban area in the Town of Milton, and has 2,600 ft. frontage on the 401. Town of Milton water line passes thru property. This is a good investment opportunity. Call Paul.

18 ACRES, This land is part of the future urban area for Milton. This lot is one of a kind with a view of the escarpment. If you are looking for a great place to build with future investment opportunities give me a call. town water is available.

FARM

50 ACRES, Farm, century home with apartment, pool, barn, track, pond, good fences, paved road, close to Milton, good investment. Priced to sell.