

ROYAL LEPAGE

"The name friends recommend"

878-8101

388 Main Street E., Milton

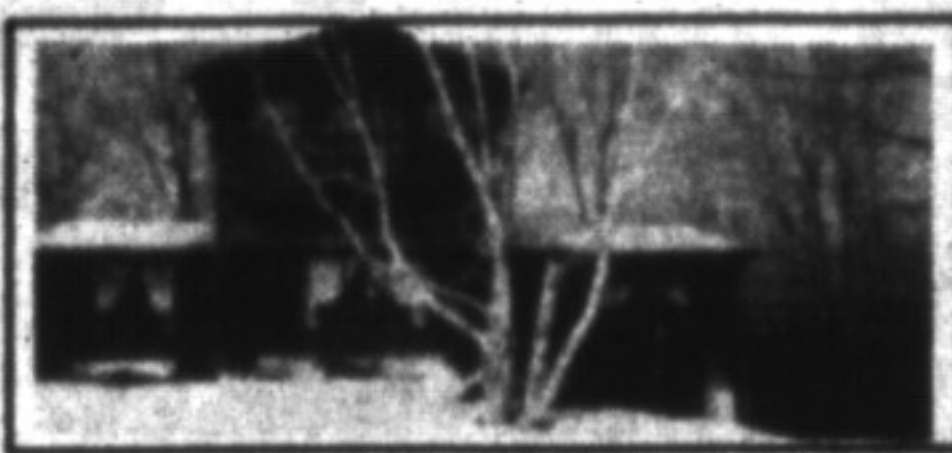
Royal LePage Real Estate Services Ltd.

* Sales Representative ** Associate Broker



\$369,000

Unique log house, very spacious, 4 bdrms., eat-in kit, great location, 5.25 acres. Close to town with potential. Includes dog kennel licence. Denzil Lawrence.



NATURE LOVERS DREAM

8 room log home, 25 acres, hardwood bush, trails & ponds. 10 mins. to 401 & Go. \$345,000. Norme or Ed Proveau*



\$289,900

Your dream home to be built on approx. 1-1/2 acs., quality throughout. Choose from a variety of builder's plans to suit your needs. Barbara Ramsden*



\$89,900

Best Buy — Here's Why! 3 bdrms., new windows, lots of parking, fully detached. Call Sandi Kinsale* to view.



\$179,900

This outstanding home features new kit. & bath, h'wood. flooring, large lot. Call Sandi Kinsale*



\$595,000 or \$3,000/MTH.

For Sale or Lease — 4+ bedroom executive home on prime 2 acre lot in Campbellville. Pool, tennis court & more. Barb Lafleche*



\$280,000

Live here — work here. Great potential for owner occupied business. Zoned Industrial. Barb Lafleche*



\$229,900

Woodward Ave., 4 bdrms., 2 baths, charming brick home, large lot, dble. garage. A. Lear-Costigan*



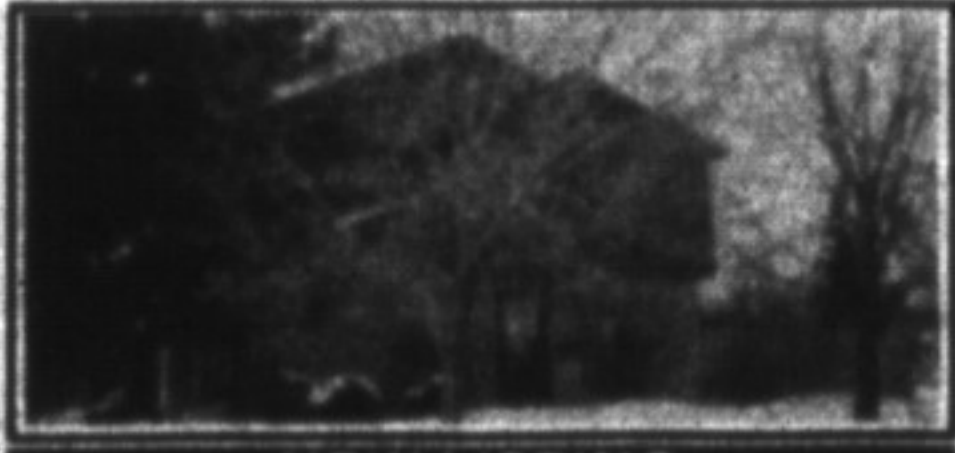
\$118,900

3 bdrm. townhouse. Good buy — new carpeting, neutral decor. A. Lear-Costigan*



\$127,000

Superior townhome. All the extras! Finished rec room, central air, upgraded carpet, newly decorated. Ross Runnals**



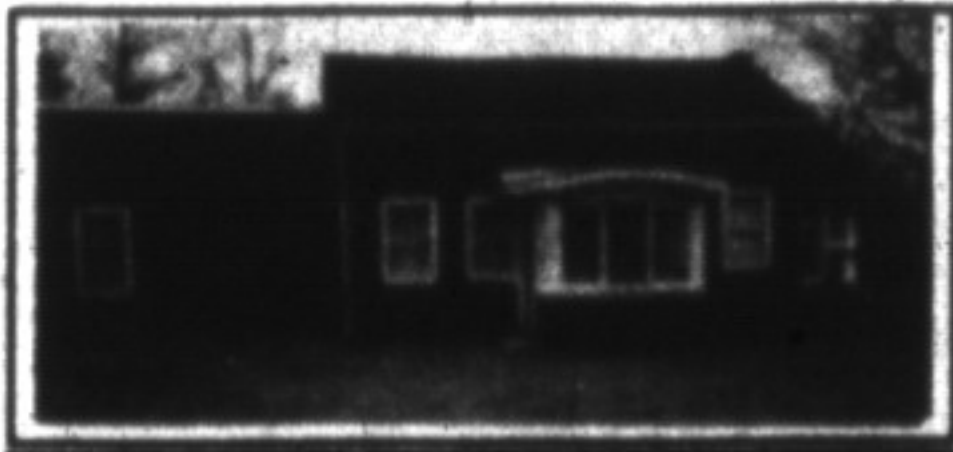
NEW LISTING

Bright end unit with park-like setting on 3 sides, finished basement. Only \$115,900. Ed or Norme Proveau*



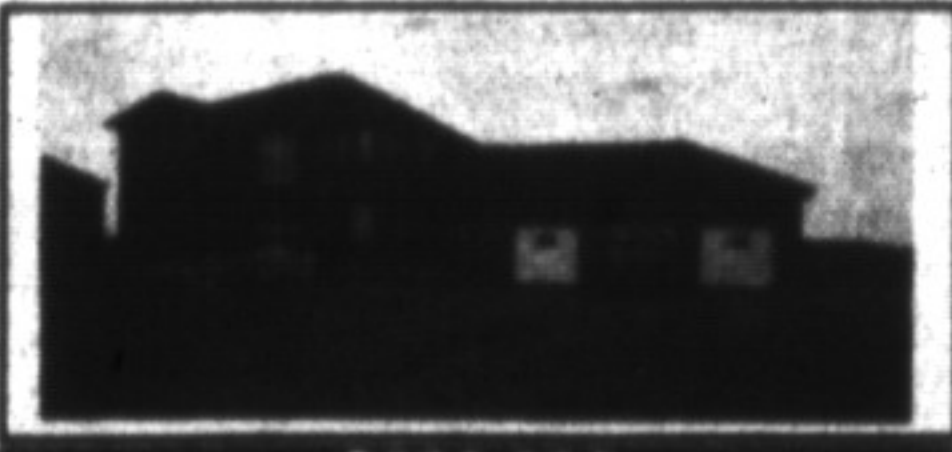
\$269,000

Charm and atmosphere throughout this custom built Cape Cod with Oak floors, French doors, solarium, garden room, etc. Set on 10 scenic acres with pond. Ed or Norme Proveau*



\$189,900

Situated in the popular village of Kibride with extensive renovations. Large private lot with barn plus a double detached garage. Call Eve Gooding*



\$529,000

Approx. 3700 sq. ft. customized with numerous upgrades with an excellent location, close to 401 and a golf course to relax the weekend away. Call Eve Gooding*



\$117,000

To purchase this home with 9% downpayment and the lowest interest rates (land payments less than rent plus the luxury of moving right in anytime. Central air & apt. Now's the time. Call Eve Gooding*



\$154,900

The ideal neighbourhood where each home reflects pride of ownership, features lg. L.R., 3 bdrms., heated, fls. extra lg. lot. avail. to move in right away. Eve Gooding*

BUSINESS OPPORTUNITY \$88,000

Long established electronics shop. Must be sold. Vendor will assist. Ross Runnals**

\$114,900

Location, Location — 1-1/2 acre building lot, minutes to 401 for easy commuting. Call Denzil Lawrence for more info.

\$725,000

240 Acres in Halton Hills. Fabulous property, slightly rolling with several ponds. Excellent location just N. of 401. Petra Schwabe*

URGENTLY NEEDED

Bungalow or split-level home with full in-law suite and separate entrance for first time buyers. If you are thinking of selling please call me for a complete market evaluation of your home.

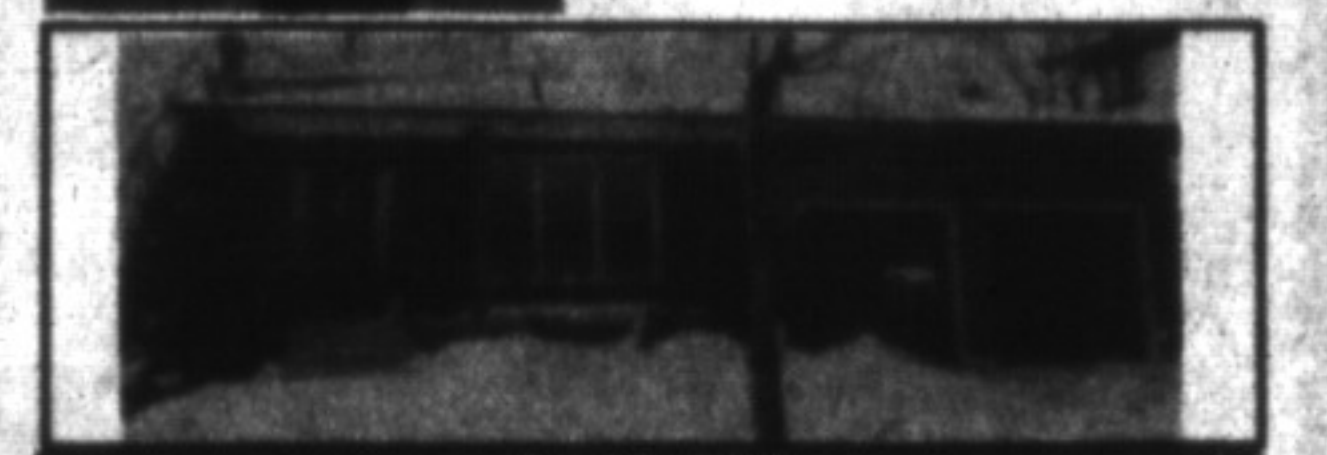
Barbara Ramsden* 878-8101

WANTED FOR FIRM BUYERS

2-3 Bedroom bungalow in mature area of town. Garage an asset.

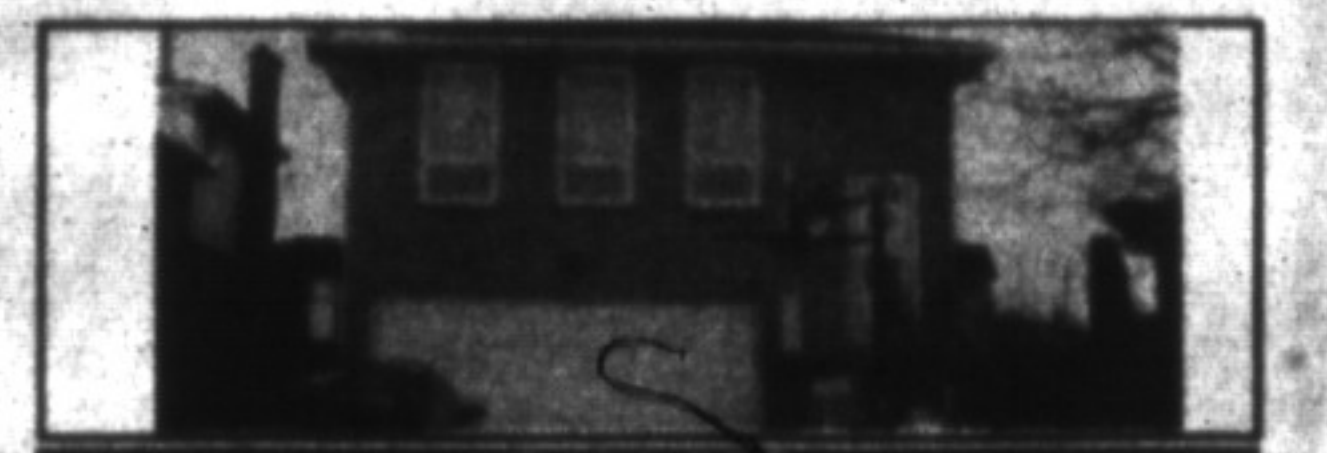
Angela Silcock* 878-8101

SANDY DEL PAPA
Sales Rep
878-8101



\$289,000

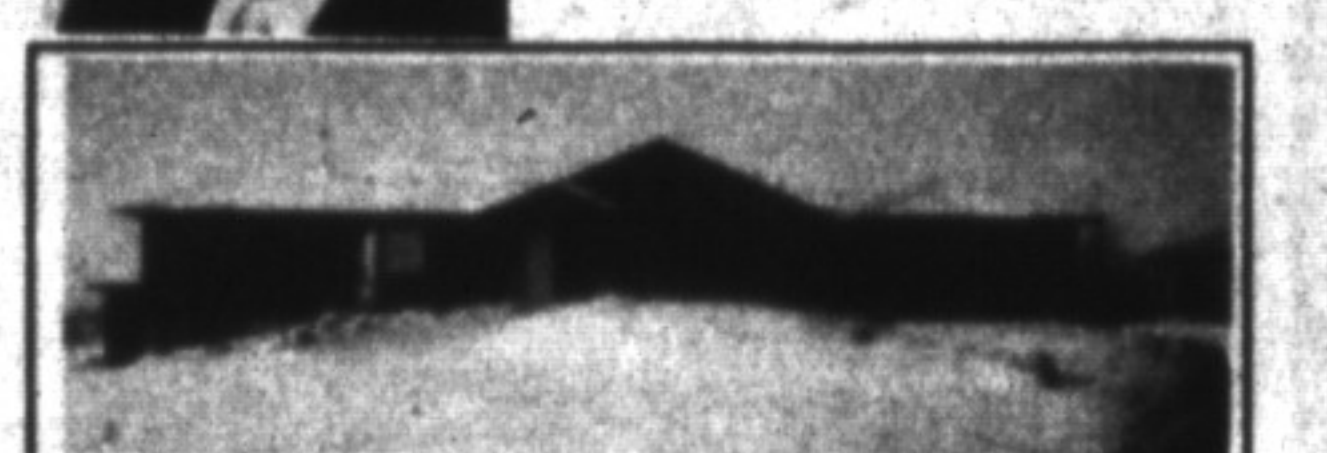
Picky people — this one's for you! Spotless exec. home with over \$100,000 in upgrades. Call for details.



\$193,900

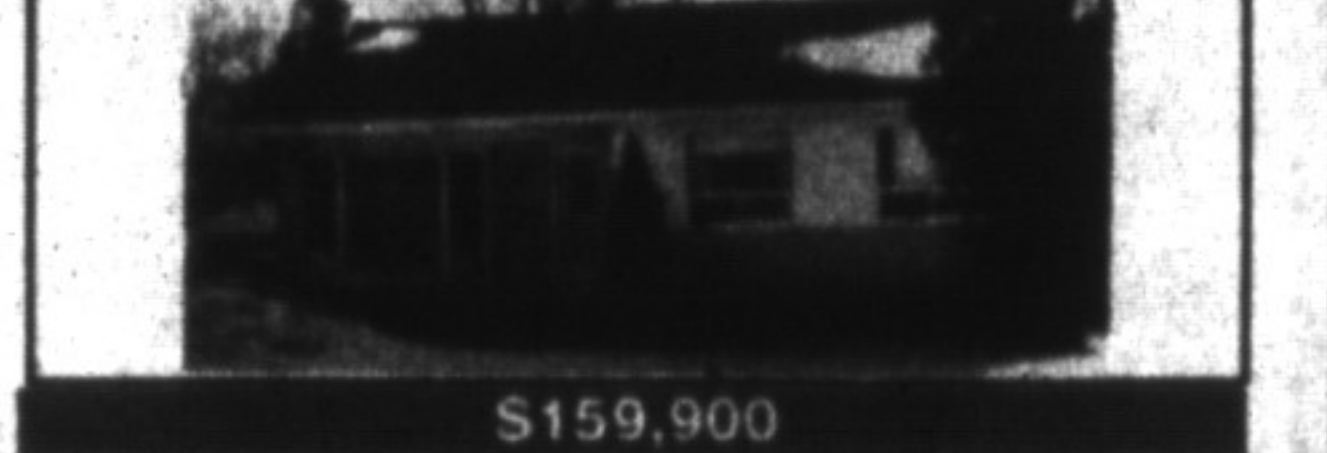
Lots of living space here! Formal L.R., plus cozy family rm., plus fin. rec. room & more.

LAWRIE GIVEN
Sales Rep
878-8101



\$349,000

there's more than meets the eye here. Bright kit., in-law suite, workshop, office/den, woodstove. Call now to view. Lawrie Given*



\$159,900

Great starter in move-in condition. New windows, new kit., fin. basement, fenced yard, alum soffits & fascia.

THE COUNTRY CORNER

INGE WINTHER*

878-8101

Specializing in Country Properties for 21 years



BALLIMORE FARM

Ballimore Farm — Multi-gabled 1889 stone house with large new wing & pool. Barn with boxstalls. 51 scenic acres., Campbellville area. \$575,000



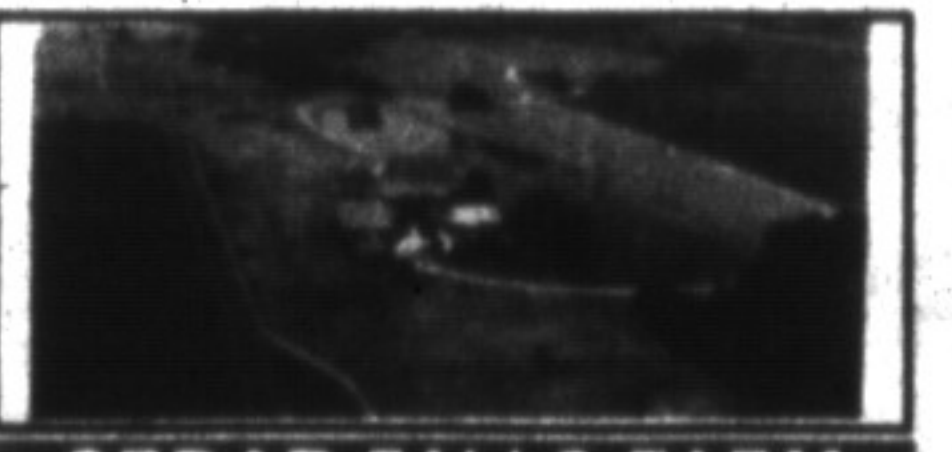
MAPLEGATE FARM

Maplegate Farm — 3600 sq. ft., century farm set on manicured grounds with pool and 2 large ponds on 72 scenic acres. 2nd home for staff. Barn with box stalls \$575,000.



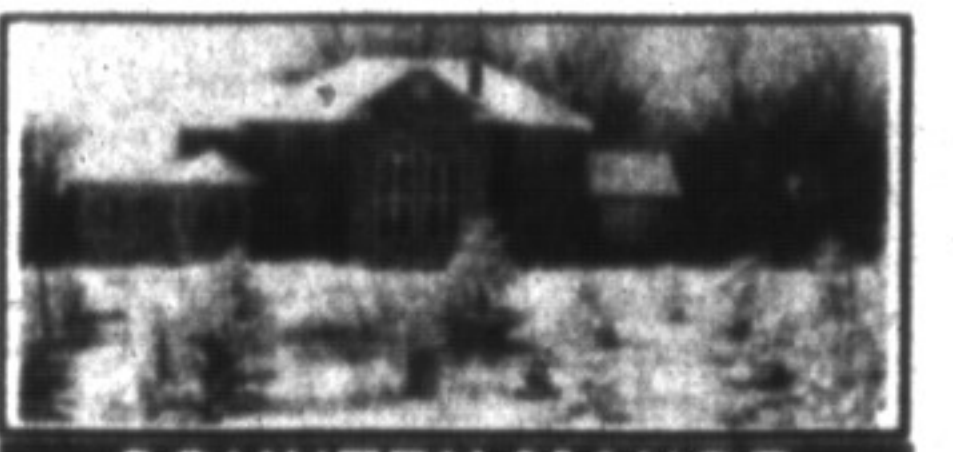
GLEN CAIRN FARM

Beautifully restored & decorated 4,000 sq. ft. century home. Log guest house, barn & paddocks. 154 spectacular acres with mature bush and 3 ponds.



CEDAR FALLS FARM

Cedar Falls Farm. Spectacular country estate. Century stone house, bungalow and coach house for staff. Barns, etc. 149 acres with creek, waterfalls & pond. \$795,000



COUNTRY MANOR

5700 sq. ft. Custom built, 2 storey, traditional centre hall, front and back staircase. Separate maid's quarters set on 10 wooded acres. \$795,000.



SPRING HILL

8,000 sq. ft. stone manor (1830) set on a stunning 15 acres. Escarpment lot. Two other homes for staff and stone barn. \$1,900,000.



VIRGINIA BRAZEAU R.N.
Sales Representative
878-8101
(Ter.) 338-4838

It's good to know someone who knows and cares!



\$185,000

Stay warm & cosy around the fireplace/stove in this large, main floor family rm. Extra large bedrooms, master w/ensuite. Call today!



\$149,900

3 bedrooms; 2 baths & lovely to look at! Condo fee includes heat/hydro, parking indoors, cable, etc. Worry free living.



\$390,000

Stone home just 13 years old. Charm & warmth & quality construction. You'll love the Pine kitchen. A must see!



\$339,000

Reduced! Great value for this lovely 6 year-old brick Cape Cod. Located just north of town.



\$390,000

Beautifully renovated w/quality! Huge workshop, barn & pond. Just north of Derry of Fifth Line.



\$275,000

Reduced! Guish Line just N. of Derry Rd. Brick/cedar home at end of long meandering lane. Beautiful limestone creek a bonus!



\$298,000

All that beautiful land plus an oversized raised bungalow w/walkout basement. Barn, pond, paddocks — a great buy!



\$399,900

Beautiful woods with flowing creek — nature at its best. Huge raised bungalow with basement patio doors from narry suite.

\$75,000 — 50 ACRES WITH A FABULOUS VIEW
Of beautiful Georgian Bay! Your ideal hobby farm & building site. Call for directions & details. The price is right!

JOYCE HAGEVIK
Sales Rep
878-8101



\$239,000

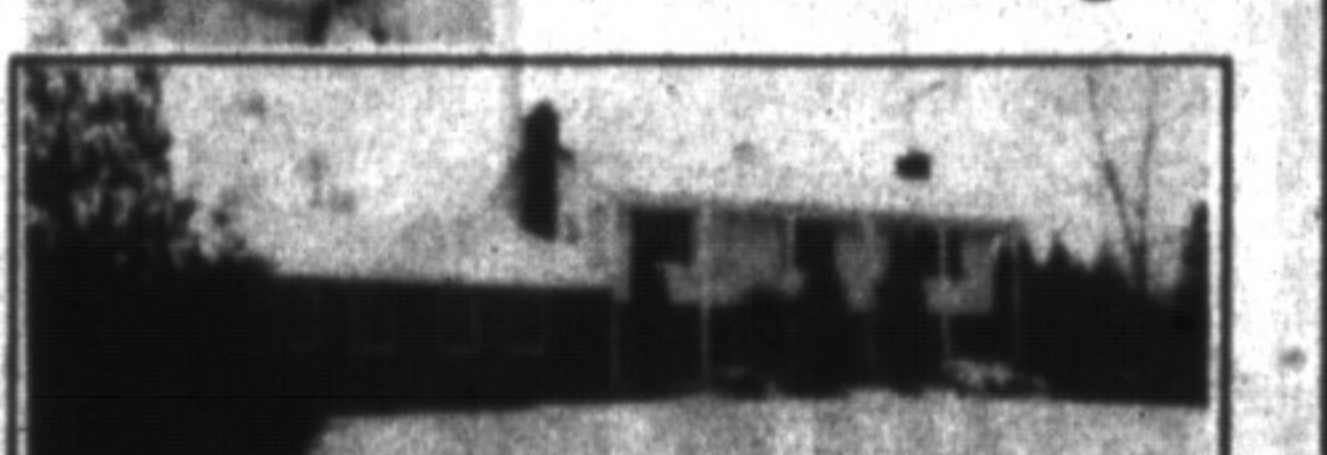
A very pretty 1/2 acre lot just N. of Milton comes with a spacious 3+ bdrm. burg. with 3 walkouts from the lower level, plus a 1 bdrm. in-law suite, 2 car garage, I/G pool, newly decorated thru-out.



\$249,900

Lovely decorated home set on treed lot with I/G pool, deck plus walkout from lower level. Farm. rm. & rec rm. both have F.P.'s. Home is not a drive by.

BARB CROWE, M.A.
Associate Broker
878-8101
24-Hour-Pager



\$399,000

Attractive Georgian home situated on 10 acres. Home features main floor in-law suite. Great for large family.



\$289,900

So much to offer. 5 bdrm. brick bungalow with M.F. family rm., in-ground pool on almost 3 acres & only eight minutes to the 401.