

# FACTORY ORDER SALE

BUY IN WINTER

DRIVE IN SPRING

## THE BEST PRICES OF THE YEAR ON OUR WORLD CLASS INTREPID & CONCORDE MODELS

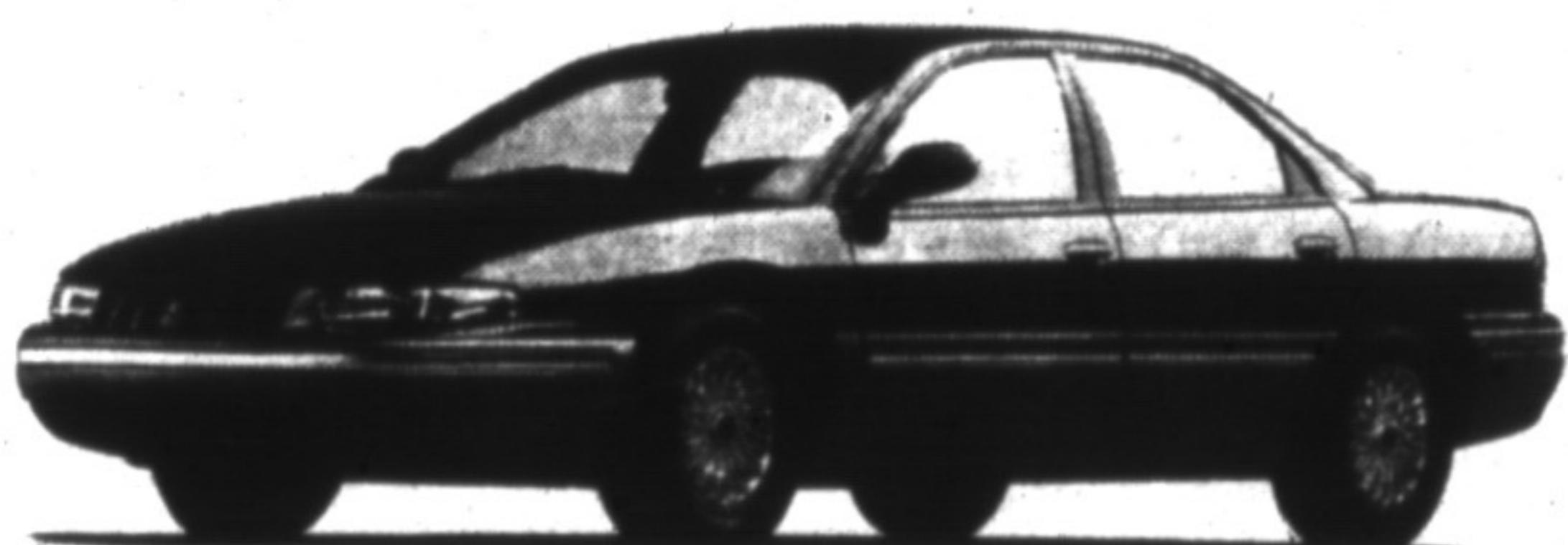
### BRAND NEW 1994 INTREPID

Dual airbags, 3.3L V6, 4 spd. auto. trans., air conditioning, bucketseats, w/floor console, dual remote mirrors, tilt steering, AM/FM stereo and much much more.



**\$17,998\***

FACTORY ORDER SPECIAL



### BRAND NEW 1994 CONCORDE

Dual airbags, 3.3L V6, 4 spd. auto trans, air conditioning, premium bucket seats w/floor console, 4 wheel disc brakes w/ABS, dual power heated mirrors, p. door locks, p. windows, AM/FM cassette stereo, tilt steering, speed control, and much more.

**\$21,953\***

FACTORY ORDER SPECIAL

### BRAND NEW 1994 INTREPID ES

Dual airbags, 3.3L V6, 4 spd auto trans, air conditioning, premium bucketseats, w/floor console, 4 wheel disc brakes, dual remote mirrors, AM/FM cassette stereo, tilt steering, speed cohtrol, 16" aluminum wheels & handling pkg. & much more.



**\$20,469\***

FACTORY ORDER SPECIAL



PHIL CIANTAR  
General Sales Manager



JOHN MORRISON  
Used Car Manager



RACHEL SEED-NOLL  
Business Manager



RAY DUNBAR  
Sales & Leasing Consultant



RICK PELLART  
Sales & Leasing Consultant



GEOFF BOWER  
Sales & Leasing Consultant



DWAIN MCGILLVRAY  
Sales & Leasing Consultant



**878-8877**  
81 ONTARIO ST., N., MILTON

**WE WILL NEVER\* BE UNDERSOLD BY ANY TORONTO, HAMILTON OR LOCAL AREA DEALERS.**

\*Sale price plus freight and all applicable taxes & licensing.