

RE/MAX



Phil Prestidge

Sales Rep.

878-7777 office • 878-6924 home
24 hr. pager

TRUST • INTEGRITY • KNOWLEDGE • SERVICE



4 bedroom home on quiet mature crescent offers all the things that a family is looking for in a budget home, finished rec room, walk-out from dining room, fireplace, tastefully decorated and in top shape at a budget price, call PHIL PRESTIDGE today. \$154,900.

IF YOU'RE THINKING OF SELLING
Put 10 years of full-time dedicated service and Milton's #1 Real Estate company to work for you!

INDUSTRIAL COMMERCIAL

3.0 ACRES, Lawson Road, \$169,900/acre. 2.6 acres outside storage. Industrial DD. Make an offer.

PRIME LOCATION

UP TO 3600 SQ. FT., Main St. location beside liquor store. Commercial zoning. Asking \$10 per sq. ft.

PHIL'S NEW YEAR'S WISH LIST

TOP END in-town home, 4 bdrms., main floor laundry room, family room. In good shape. Robertson, Clements, Randall, Gowland. Link, Detached, Fixer Upper, Immediate Possession. Three or four bedrooms, bungalow, or two-storey. Call today for an evaluation.

JOYCE SCOTT REAL ESTATE INC. JSR



Commercial Street - Gorgeous ravine lot beautiful extension to home. Loaded with extras. Must be seen. Listed at \$259,900.



Sunnyvale Cres - Lovely upgraded 4 bedroom home. Main floor family room, 2 car garage. Listed at \$214,900



Call Listing Agent
JOYCE SCOTT
at 878-1526 to view



TEAMWORK & \$1090
SELLS YOUR HOME

DON SMITH REALTY

WE ARE NUMBER 1 IN SAVINGS

Serving Milton and Surrounding Area

905 - 876-1237 Fax - 876-0453
Res - 876-0321 Car - 873-5598

Ask for our
Home Sellers Assistance Program

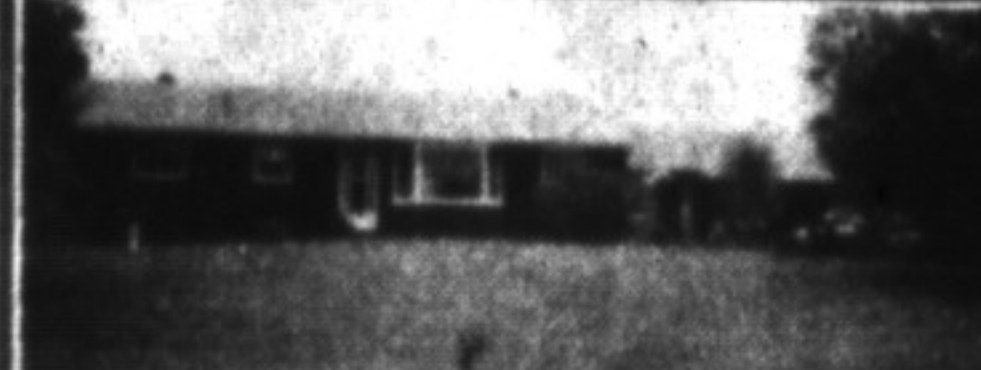
CHRISTIE & WOODS REAL ESTATE LTD.

189 Main Street, Milton



VICTORIA SQUARE

Unique 3 bedroom century home with original pine floors. Large open kitchen/family room. Professionally landscaped perennial gardens. Call Bob Greig 875-4894. 878-2095.



PANORAMIC SUNSET VIEW ON 3.3 ACRES
Lovely 3 bdrm. bungalow - immaculate, hardwood floors. Large country kitchen with walk-in bay window. Finished rec room with fireplace, basement has walkout to grounds, A/G pool. Ideally located close to Mohawk Raceway, Glen Eden and Brookville Elementary. Easy access to Milton, 401, Guelph & Mississauga. Call Bob Greig to find out how you can own this home 878-2095/875-4894.



COUNTRY SPECIAL WALK TO TOWN
3 bedroom bungalow, eat-in kitchen with new countertop, loads of cupboards, bright living room, new bathroom. To view call Yvonne. 878-2095.



COUNTRY SPECIAL
Separate in-law suite • 5 minutes to 401 • quiet country 3/4 acre • unique custom built bungalow • neutral decor • eat-in kitchen • formal dining • 4 bedroom, master ensuite • pool • huge sunroom • Cozy winter fireplace, high efficiency gas heat. Call Yvonne 878-2095. Asking \$259,000.



FABULOUS 20 ACRES

Park-like setting, stream, pond, forest, 3 bedroom ranch bungalow, horse barn and workshop. To view call Cameron Gall 878-2095, 876-4532.

Yvonne Christie - Broker/Owner - 878-2095 *Sales Rep.
Cameron Gall* 876-4532 Bob Greig* 875-4894
Allan Christie* 878-2095

RE/MAX

Miltowne Realty Corp

Sold more homes since 1983

22 Ontario St. South 878-7777



JEAN SNOWDEN
878-7777

A HOME WITHOUT THE HOMEWORK

And leave the maintenance to someone else. 3 bedrooms, rec. room, main floor laundry, extra long driveway. \$125,900.



Keep in tune with today's market ... if you are contemplating purchasing or selling your home, call me for a pressure-free response.



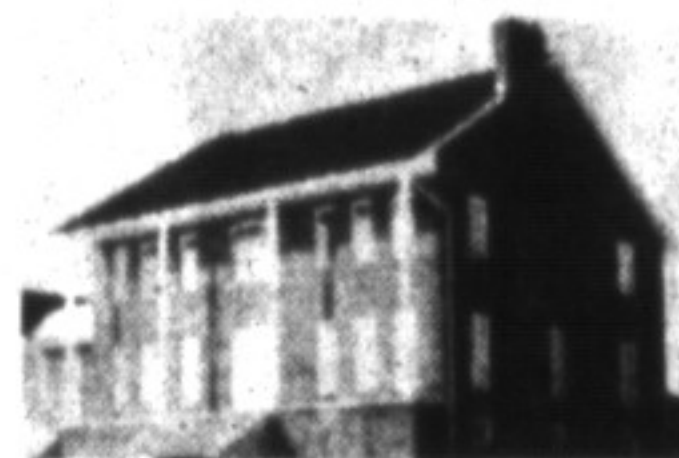
CAROL M. BROOKS

Sales Representative

OFFICE: 878-7777

RES: 875-0067

TOR. LINE: 825-4485



CAMPBELLVILLE
Village setting, 1 acre, custom home, large principal rooms, gourmet kitchen, 5 bdrms, nanny or in-law suite. \$429,000

LOT #5 LAURIER

Brand New Charleston built home. 4 bedrooms, large family room, living room, dining room. Designer kitchen, many other upgrades.

\$229,000

JP SOLD	JP SOLD	JP SOLD	JP SOLD	JP SOLD	JP SOLD
RURAL FLAVOUR		BUYER FRIENDLY		JOHN (JP) PEARLS Sales Rep	
For the larger discerning family over 3500 sq.ft. of living area, 5 bdrms., 3 baths, main fl. lam. rm., huge kit., large workshop/gar. on property plus guest house/studio. 25 acres of treed, rolling land. Call JP \$480,000.		Astounding raised ranch, 3 large bedrooms, finished basement, upgraded kitchen, central air and vac, manicured gardens with spa built-in to deck, too many extras to list. Call J. P. for details. \$184,900.		Office 878-7777 Res. 878-6859 Tor. Line 825-4485	
A HARVEST OF FEATURES		DISTINCTIVE PROPERTY		NEW PRICE \$134,900	
Close to Milton and Oakville, this turn of the century home has been completely renovated from tip to toe, wiring, plumbing, insulation, finished in warm wood, 3 bdrms., den, Florida room, all on over 3 acres. \$299,900. Call JP for showing.		This beautiful executive home on over 2 acres in Ennisclear Woods offers 4 very large bedrooms, a master ensuite fit for royalty, large main floor family room, den, dining room fit to entertain anyone and a fabulous gourmet kitchen. 3 fireplaces and lots more. Call JP for complete list. \$429,900.		Garage link in Acton. Prime location backing onto treed area, large lot, 3 bedrooms, 2 bathrooms, separate dining and living areas, large eat-in kitchen. Single car garage. Call JP for personal viewing.	
JP SOLD	JP SOLD	JP SOLD	JP SOLD	JP SOLD	JP SOLD



SOLD 100 MILLSIDE DR.
SOLD 371 BRONTE ST.
SOLD 235 BRONTE ST.

BETTY INGLE
Sales Rep
878-7777
Res. 827-4286



RELOCATION REFERRAL SPECIALIST

LISTINGS ARE SELLING!

Spring Market is just around the corner.

LIST WITH ME and let me work for you together with 25 dynamic Real Estate Representatives in my office with a total of over 275 years which would maximize your chances of getting the maximum price for your home.

Let our statistics prove that the way to go is **THE RE/MAX WAY.**

Call me today, **BETTY INGLE 878-7777.**

DERRY ROAD
Executive home situated on 5 picturesque acres, with well appointed rooms, dining room, living room, large eat-in kitchen, 4 beds, double garage. Please phone for more information.



CAMPBELLVILLE
Family home on well landscaped lot. 3 bedrooms, family room, open concept kitchen, in-law suite with walkout from lower level. Now asking \$364,900. A must see.

- One acre lot on town water
- View of escarpment
- \$99,900
- Phone Betty • Take Action
- Make an Offer



KATRINA WALTON
Sales Representative
Office: 878-7777
Res: 878-1588
Tor. Line: 825-4485



FLOOR PLAN FOR ALL REASONS
Relaxing, entertaining, or just every day living. Design of this Timberlea executive helps you maximize each! Main floor offers large entry hall, separate living room, dining room, family room, eat-in kitchen, laundry room and powder room. Top floor boasts four bedrooms, two bathrooms and lots of closet space. Lower level is fully finished offering many possibilities. With today's low interest rates, this one should not be missed. Call for your appointment today. Asking \$239,900