

### SCOTT B. PRIOR

Associate Broker  
24 Hour Paging  
878-7777 • 825-4485

#### COMMERCIAL

This lot is 66' x 110' located in the downtown Cambridge. Reduced to \$109,000. Please call Scott.

#### KING OF THE CASTLE

Situated on the highest point in the entire county, this 2-acre property is a 100% complete estate with a coach house garage. Asking \$799,900. Please call Scott.



#### QUALITY FARMLAND

best describes this 97.7 acres on the corner of 10th Sideroad & Fifth Line. The property features a 2 1/2 storey home, a large bank barn & drive shed. Asking \$559,000. Please call Scott.



#### TOWN & COUNTRY

\$279,000. That's right - this gorgeous three bedroom home is only two minutes from town, sitting on approximately 1/2 acre. It features a large oak kitchen, open concept family room, huge master bedroom, partially finished in-law suite in the basement with a separate entrance & so much more. Please call Scott.



### FREDA LAWRENCE

Sales Representative  
OFFICE  
878-7777  
TOR. LINE 825-4485  
RES. 878-4860

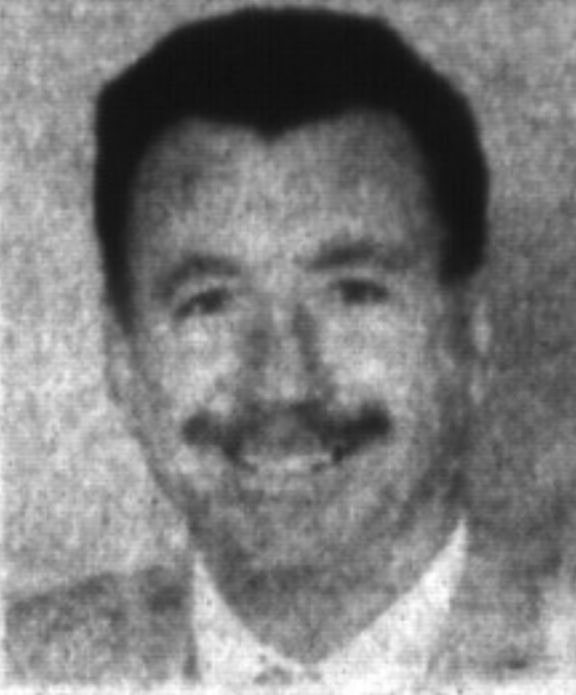


**KISS YOUR NEIGHBOURS GOODBYE!**  
And move to this 3 bdrm all brick country home on 99x322 lot. Eat in kitchen with lots of cupboards, garage with furnace, 25x50 steel shed with hydro. Please call Freda.



#### 5075 HIGHWAY #25

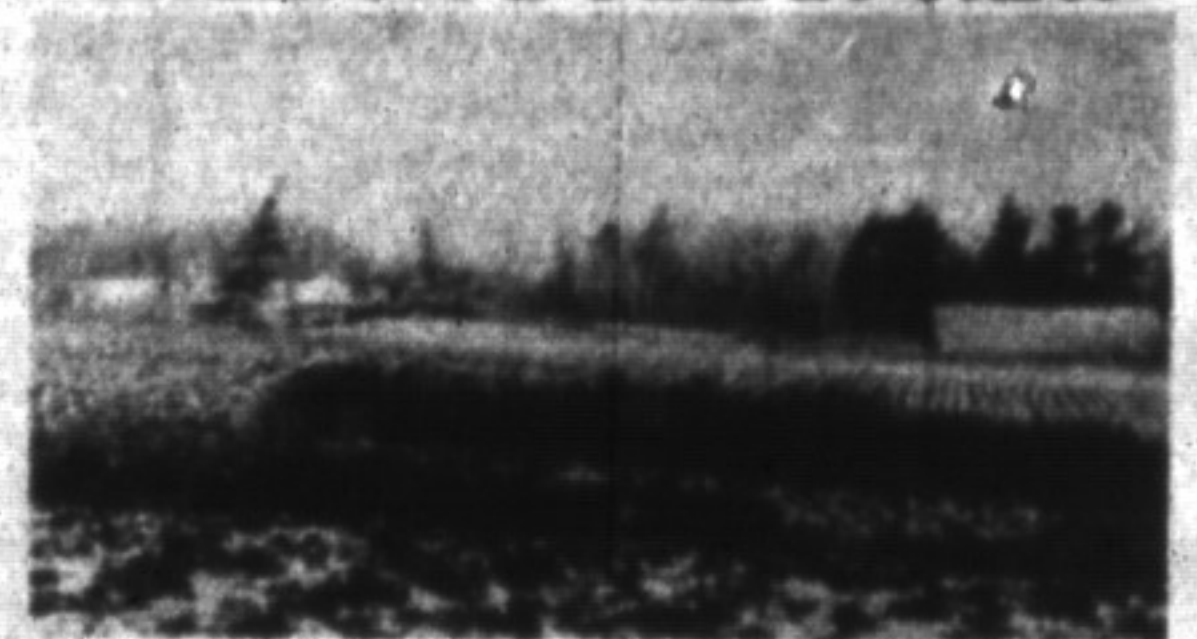
2600 sq. ft. Cape Cod brick home on 150x323 lot. Amenities include large principal rooms, m/floor family, central air & vac, 5 bdrms, 2 baths. To find out more call Freda.



### Gary Thomas

Broker/Owner  
878-7777  
Tor. Line 825-4485  
Res. 875-3700

#### MILLION DOLLAR VIEW



Very fine bungalow situated on gorgeous 64 acres. Situated just west of Milton. Gorgeous escarpment view. \$625,000.

Call Gary Thomas .....878-7777



### GLEN THOMAS

Office 878-7777  
Tor. Line 825-4485  
Res. 876-0987

#### ESTATE BUILDING LOTS

①

Beautiful 1 acre Estate lot in Morriston Meadows.  
**ONLY \$89,000**  
Call Glen for details.

②

1.4 acre Estate lot in Moffat.  
**ONLY \$119,900**  
Call Glen for information



### LINDSAY J. McLAREN

Sales Representative  
878-7777 Office  
854-2451 (Res.) 825-4485 (Tor. Line)



#### METICULOUS, QUALITY HOME

Features 4 bdrms, 3 baths, custom eat-in kitchen, main floor family room with F.P., formal living room/dining room, finished rec. room with central air, central vac., broodroom and hardwood floors.  
Lindsay J. McLaren .....\$199,900



#### 2 STOREY COLONIAL

Sitting on 150' x 77' lot and featuring pine floors in living & dining rooms, pine kitchen opens to family room with F.P. & heatolator, 3 large bedrooms, 2 bathrooms, and much more. Located just min. to Milton & on town water.  
Lindsay J. McLaren .....\$239,900



#### TIMBERLEA EXECUTIVE

Beautiful 2 storey featuring a gorgeous 17' x 24' heated inground pool. Other features include 4 bedrooms, open kitchen to family room, french doors to living room, main floor laundry room, full finished basement with office. Situated on a very quiet street close to schools.  
Lindsay J. McLaren.....\$249,900



#### MOVE IN CONDITION

Martin Street, beautiful custom built bungalow with very large 153' x 185' nicely landscaped lot, 2+ car garage. Home is approx. 1850 sq. ft. Close to all amenities. Call today to view. Was \$269,900.  
Lindsay J. McLaren .....\$224,900



#### TIMBERLEA EXECUTIVE

Beautiful sidesplit home features 4 bedrooms, main floor family room, eat-in kitchen, comfortable living room/dining room combination, 3 baths, large finished rec. room and located on quiet crescent with inground pool. Huge pe-shaped lot.  
Lindsay J. McLaren .....\$236,900



#### TUDOR MANOR - CYVILLE ESTATES

Nestled amongst mature trees on professionally landscaped 2 acre lot. Meticulously cared for 4 bdrm. Manor with huge Hollywood style kitchen in cherry, open to pine wainscotted fam. rm. with F.P. Walkout to inground pool, formal L & D rm., open spiral Oak staircase, den in Pine overlooks sunken sun room with F.P.  
Lindsay J. McLaren .....\$880,000

**LAND FOR SALE**  
132 Acres of farmland Derry Rd.  
10 minutes west of Milton.  
**\$6,300/acre**  
**CALL GARY FOR DETAILS.**

**CROWNED WITH CLASS**  
  
Custom built English Tudor style. Features extensive landscaping, cedar deck with hot tub. Set on gorgeous 2.86 acre lot in Campbellville.  
**\$445,000.**  
Call Gary Thomas.....878-7777



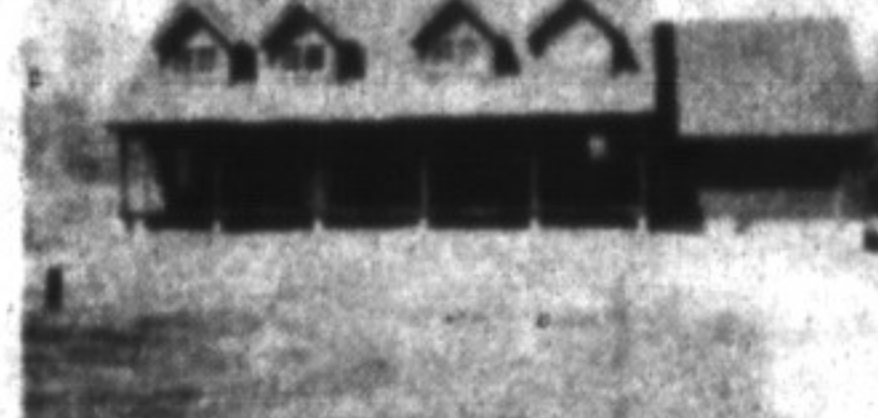
### MIKE MORGAN

Associate Broker  
878-7777 878-8093  
Office Res.



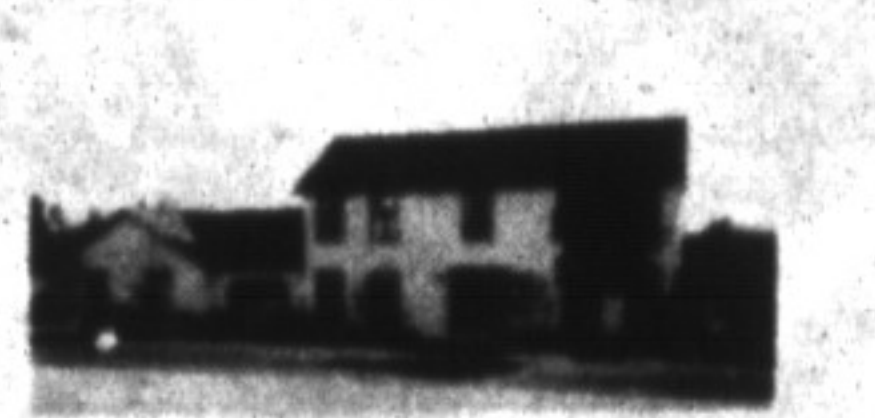
#### SPEYSIDE SPECIAL

Conveniently located just outside of town is the log home of your dreams. The focal point becomes the 22' x 27' Great Room with its efficient bright wood-stove, cathedral ceilings and view of the wooded landscape. Excellent quality construction and workmanship. Experience the great feeling of wood. Call Mike. \$289,900.



#### CAMPBELLVILLE COUNTRY

A picturesque country road winds its way to this gorgeous Cape Cod Confederation Log home nestled away on two of Mother Nature's finest acres. That warm, comfortable feeling that wood provides can be felt throughout this five bedroom, three washroom home with a forest at your doorstep.  
\$389,900



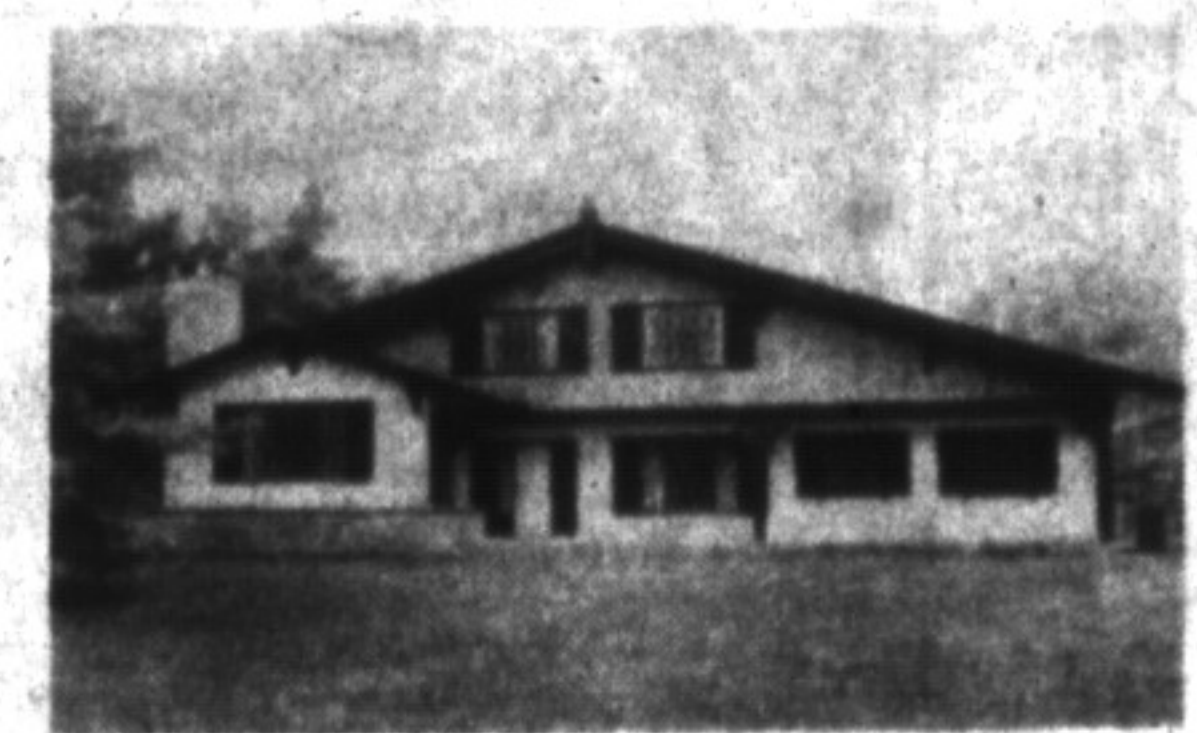
#### JUST LIKE NEW ...

But with extensive landscaping too! You'll be impressed by the showroom condition, you'll love the layout and you'll be amazed at the attention paid to detail and quality. Over 2,500 sq. ft. Plus oak and ceramic accents. Endless possibilities with an open lower level with walkout. \$345,900



### LLOYD MOORE

Sales Representative  
878-7777  
Res.:  
(519) 853-3158



#### CUSTOM BUILT

Bavarian style 3+1 bedroom home on 10 acres situated on Hwy #25, 12 km north of 401.

**IMPORTANT NOTICE**  
**TO ALL FIRST-TIME AND FUTURE FIRST-TIME BUYERS.**  
The Ontario Home Ownership Savings Plan (OHOSP) is scheduled to end Dec. 31/93. If you think you may buy a home before Dec. 31/99 then you could be entitled to a Land Transfer Tax Rebate of up to \$1225.00.  
Depending upon purchase price and income, you must be 18 years old and meet the qualification of the program. You can open your OHOSP with a minimum deposit (i.e. \$100.00) and receive Income Tax Deductions for deposits up to \$2,000/yr until Dec. 31/97.  
Please call your financial institution or myself **MIKE MORGAN**.  
P.S. Parents - Get your children enrolled. Deadline Dec. 31/93.



#### DON'T BE DECEIVED

This five level, 4 bedroom home with two full washrooms may be all the living space your family has been hoping for. A fully equipped oak eat-in kitchen and a huge main floor family room with fireplace and walkout make entertaining at home pleasurable. Conveniently located. \$229,900.



### KATRINA WALTON

Sales Representative  
Office: 878-7777  
Res: 878-1588  
Tor. Line: 825-4485



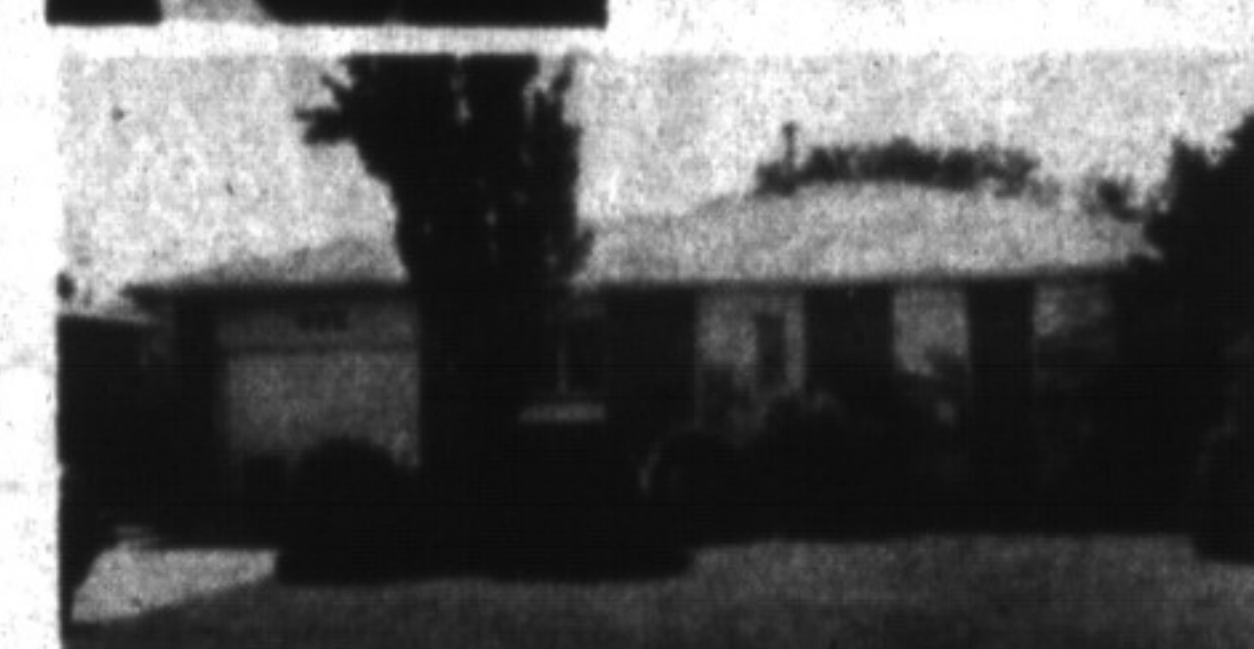
#### VANIER DRIVE

Super three-bedroom link offers large eat-in kitchen, semi-ensuite, 4-piece bathroom, main-floor powder room, finished rec. room, large master bedroom with wall-to-wall closets, central air cond. Call today for your appt.



### RICHARD HIERMAN

Sales Representative  
Office 878-7777  
Toronto 825-4485  
Residence 878-5806



#### TERRIFIC BUY

3 bedroom backsplit on quiet court has great lot with inground pool and fully finished basement with extra kitchen and bathroom.  
**\$179,900.**

JP SOLD JP SOLD JP SOLD JP SOLD JP SOLD

<p><b>WANTED</b> Client ready to buy in old Milton, must be character home around 1700 sq. ft. or more, all conditions considered, prefer double garage. To \$210,000, closing mid March 94. Call J.P.</p>	<p><b>CHARACTER</b> Close to Milton and Oakville, this turn of the century home has been completely renovated from tip to toe, wiring, plumbing, insulation, finished in warm wood, 3 beds, den, florida room, all on over 3 acres. \$299,900. Call JP for showing.</p>	<p><b>JOHN (JP) PEARS</b> Sales Rep Office: 878-7777 Res: 878-6859 Tor. Line: 825-4485 <b>RE/MAX MILTOWNE REALTY CORP.</b> <i>Demand the Very Best!</i></p>
<p><b>YOUR OWN PARK</b>  For the larger discerning family over 3500 sq. ft. of living area, 5 beds, 3 baths, main fl. fem. rm., huge kit., large workshop/gar., on property plus guest house/studio. 25 ac. of treed, rolling land. Call JP. \$480,000.</p>	<p><b>CLASSY</b>  This beautiful executive home on over 2 acres in Enrickere Woods offers, 4 very large bedrooms, a master ensuite fit for royalty, large main floor family room, den, dining room fit to entertain anyone and a fabulous gourmet kitchen. 3 fireplaces and lots more. Asking \$474,900. Call JP for complete list.</p>	<p><b>FIRST TIME BUYERS</b>  Garage Link in Acton. Prime location backing onto head area, large lot, 3 bedrooms, 2 bathrooms, separate dining and living areas, large eat-in kitchen. Single car garage all for \$139,900. Call JP for personal viewing.</p>

JP SOLD JP SOLD JP SOLD JP SOLD JP SOLD