

BEST PEOPLE SOLD **BEST TOOLS SOLD** **BEST RESULTS SOLD**

ROYAL LEPAGE

Royal LePage Real Estate Services Ltd.

878-8101

RE-The Canadian Champion, Wednesday, November 3, 1993



\$174,900

Charming century home with unique antique features, recent pine kit. with built-in appl., a lovely sunroom with wood burning stove, you'll enjoy the private landscaped yard with single detached garage. Eva Gooding*



\$299,900

A world of living can be yours in this 5 bdrm. brick bungalow on almost a 3 acre lot conveniently located between Milton and Georgetown. Barbara Crowe*



\$324,000

Just N. of Britannia Rd. on Fifth Line! 4 bedrooms, 3 baths & finished to perfection throughout, including basement! Fenced yard w/ inground pool. Virginia Brazeau*



\$699,900

Magnificent stone Manor. Large principal rooms, sep maids quarters, prof. landscaped grounds. Private secluded 5 acres lot. Inge Wither*



\$254,500

Attention nature lovers! Unique 4 bdrm. home on a very private 14 acre property with pond. Only minutes from Milton. Petra Schwabe*



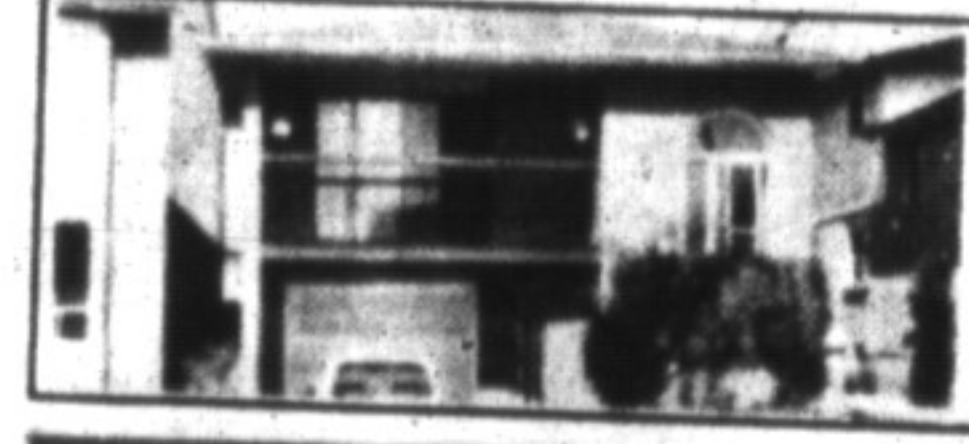
\$369,000

99 acres, lovely Victorian home & excellent bank barn. At this price it's worth driving 20 min. West of Milton. For details Call Virginia Brazeau*



\$127,900

Starting Out? Townhouse with many upgrades call me about first time buyers benefits. Ross Runnalls**



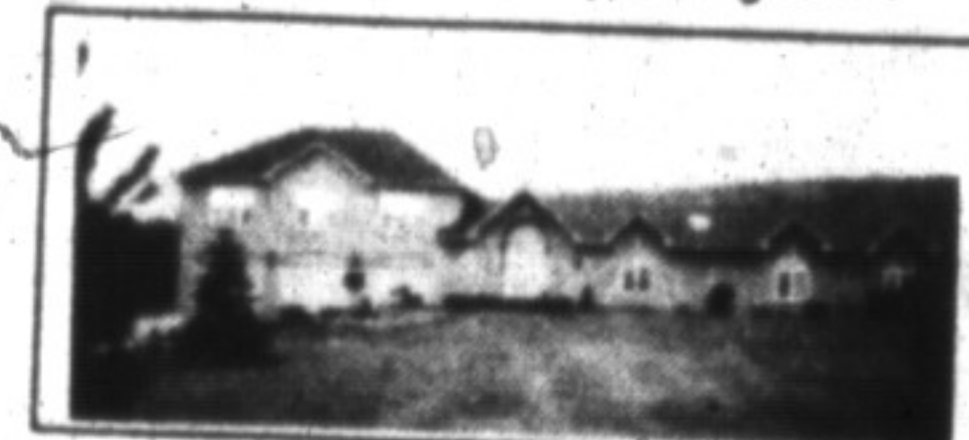
\$174,900

Must be seen! Spacious kit., D.H. & L.H. with balcony, 4 bdrms, 2 baths, huge fam. rm. & more. Sandy Del Papa*



\$219,900

Sweet 3 bdrm. bungalow set on 1 gorgeous acre alongside a ravine & stream. Great for commuters. Joyce Hagevik*



\$599,000

Gorgeous estate home set on 10 acre res. at the foot of the Escarpment. 6 stall barn, plus track. Totally upgraded. Joyce Hagevik*



\$420,000

Horseman's haven features 4 bdrm. home barn with hay loft, 2 spring fed ponds, & more. Please call Josephine Peric*



\$249,900

You won't regret making this one a long time home. Great location. Call Lawrie Given*



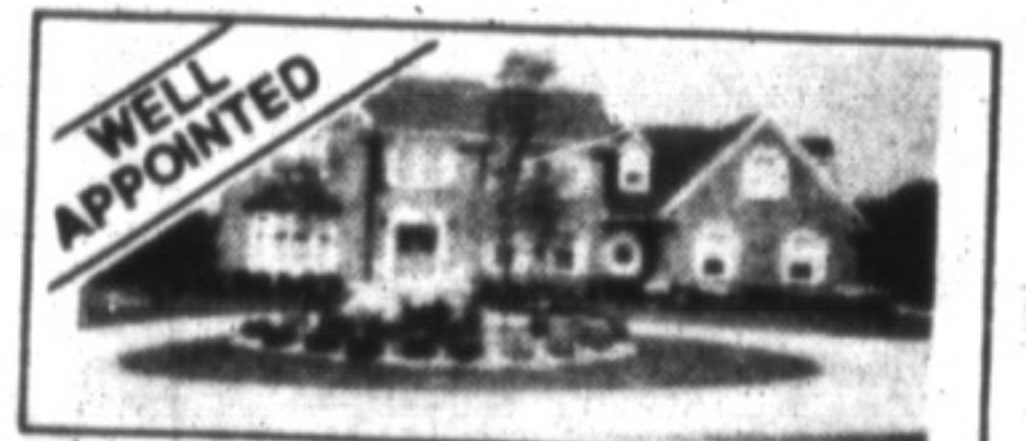
\$799,000

Spectacular country estate. 5700 sq. ft. Manor house custom built for the vendor & nestled on beautifully wooded 10 acres. Inge Wither*



\$345,000

8 rooms, 3 baths on 25 ac. bush, trails and ponds. Minutes to 401 & GO. Norma or Ed Proveau*



WELL APPOINTED

\$519,900

Set in Exclusive "Ennisclore Woods" this gorgeous home awaits your viewing. Lge principal rooms, and beautifully appointed throughout. Joyce Hagevik*



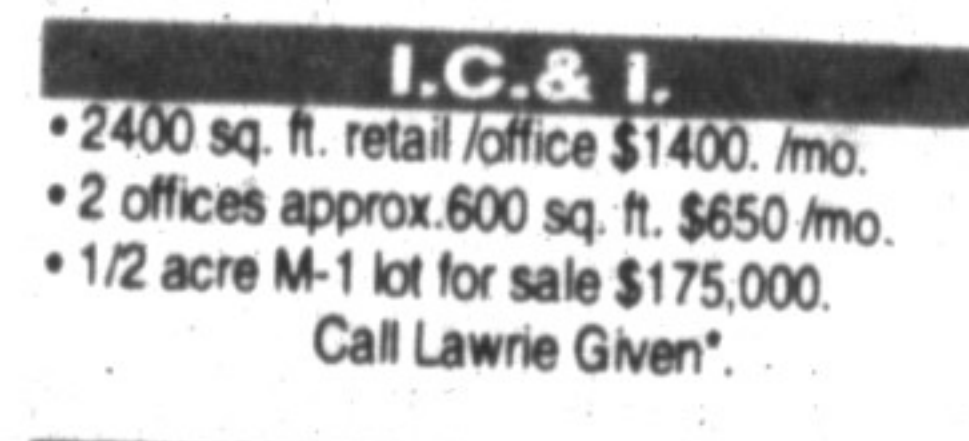
\$399,900

5 acres just east of Milton & south of 401! 2 1/2 story renovated executive (within 3 years) oak kitchen, floors, 2 staircases, workshop & pond. Virginia Brazeau*



\$229,900

A showplace! Beautiful yard with pool, almost everything upgraded! A must to see. Sandy Del Papa*



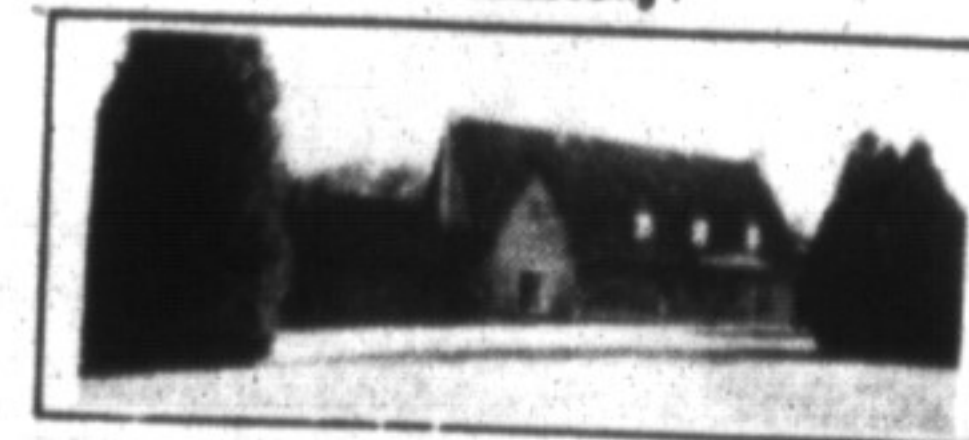
I.C. & I.

• 2400 sq. ft. retail/office \$1400./mo.
• 2 offices approx. 600 sq. ft. \$650./mo.
• 1/2 acre M-1 lot for sale \$175,000.
Call Lawrie Given*



\$239,900

Most appealing for the largest family, 6 bdrm., 4 wash-rooms, large European kitchen, finished rec. room, all recent flooring and much more. Located in an approved residential district. Call Eva Gooding*



\$429,000

5 Spectacular acres w/ birch, cedars & manicured lawns. Impressive 13 year old home built with quality. Call Virginia Brazeau*



\$519,000

Horse farm 18 boxstalls 1/2 mile track, all buildings like new, 10 minutes from Mohawk. Denzil Lawrence*



\$299,000

Incorporate this into your business plan. Located in Milton business park. Lawrie Given*



\$850,000

Glencam farm circa 1896. Beautifully restored 4000 sq. ft. 2 story, prof. landscaped grounds with pool, guest house & stable 154 ac. Inge Wither*



\$239,900

8 finished rms. & 3 bath rms., 78' x 400' lot. 24' x 40' ft. garage & shop. Ed or Norma Proveau*



HOBBY FARM

\$625,000

Once through this charming farm you'll want to own it. Set on 62 ac. of hdqd. rolling fields, 10 ac. of "Pick your apples", 100'x50' steel barn, bank barn with offices, plus lge. bright home completes the pkg. Joyce Hagevik*



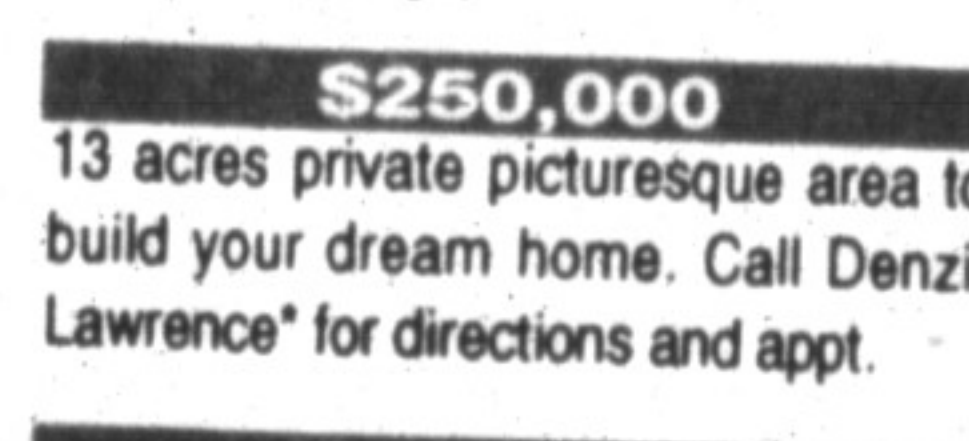
\$279,000

Bi-level bungalow on 3 acres! Oak kitchen, ceramic floors, inground pool, small barn, just waiting for your inspection. Virginia Brazeau*



\$149,900

Now you can purchase with payments less than rent. Comes complete with upgraded interior with a full in-law suite. You'll appreciate the large yard backing onto a park. Call Eva Gooding*



\$250,000

13 acres private picturesque area to build your dream home. Call Denzil Lawrence* for directions and appt.



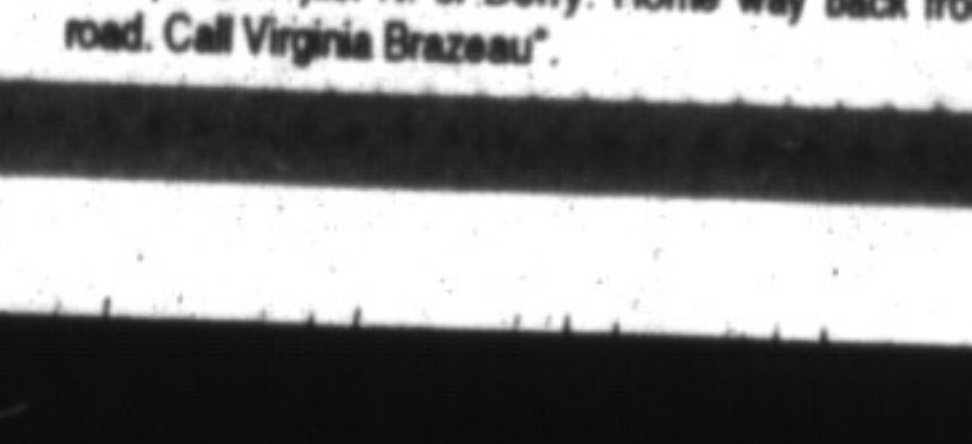
\$125,000

Retail electronics and video store. Well established clientele and assistance from vendor available. Ross Runnalls**



\$555,000

A stunning Old English Tudor in one of Campbellville's finest areas. Positioned on a gorgeous 2 acre lot with approx. 4,200 sq. ft. of luxurious living. For more details call Eva Gooding*



\$289,000

9.3 acres w/ flowing river, ravine & woods, 4 bedroom side-split, garage & workshop. Located on Guelph Line just N. of Derry. Home way back from road. Call Virginia Brazeau*



\$225,000

3 bdrm bungalow on half acre lot, nice private setting backing on nice wooded area. Call Denzil Lawrence*



\$299,900

See your dream grow! New home on approx. 1 1/2 acres or choose from selection of builders designs. 1 1/2 acre lot available listed at \$119,900. Call Barbara Ramaden*



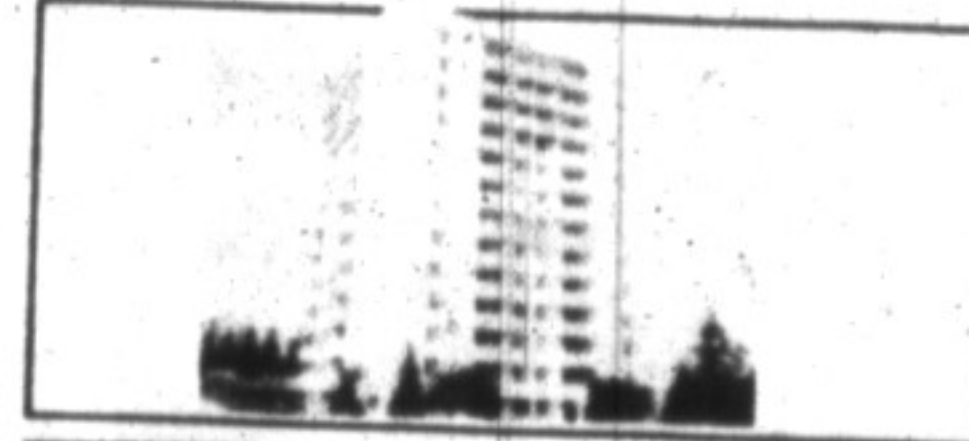
\$575,900

Picturesque Maplegate farm, 3,800 sq. ft. century home set on manicured grounds with pool, 2 spring ponds & stream, barn, 72 acres. Inge Wither*



\$279,000

9 spacious rooms, 3 baths, 1/4 private acres, inground pool, minutes to 401. Ed or Norma Proveau*



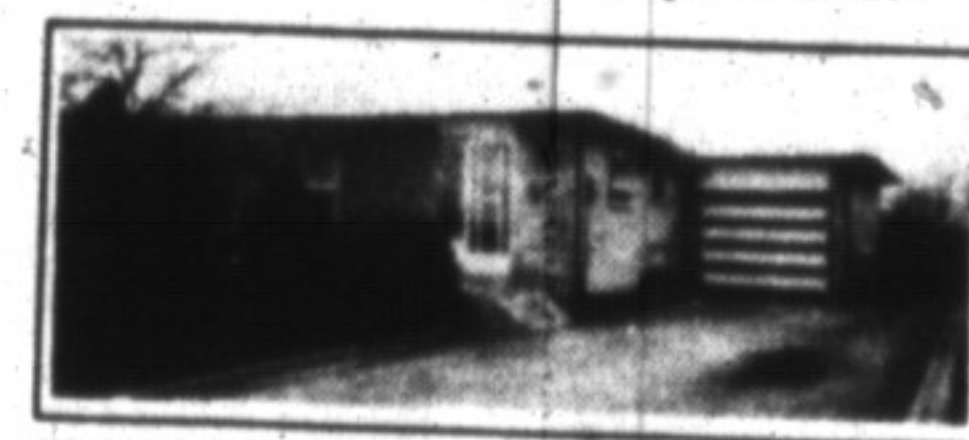
\$149,900

Just move in & enjoy living downtown with everything so conveniently located. 3 bedrooms, 2 baths & parking for 2 cars. Virginia Brazeau*



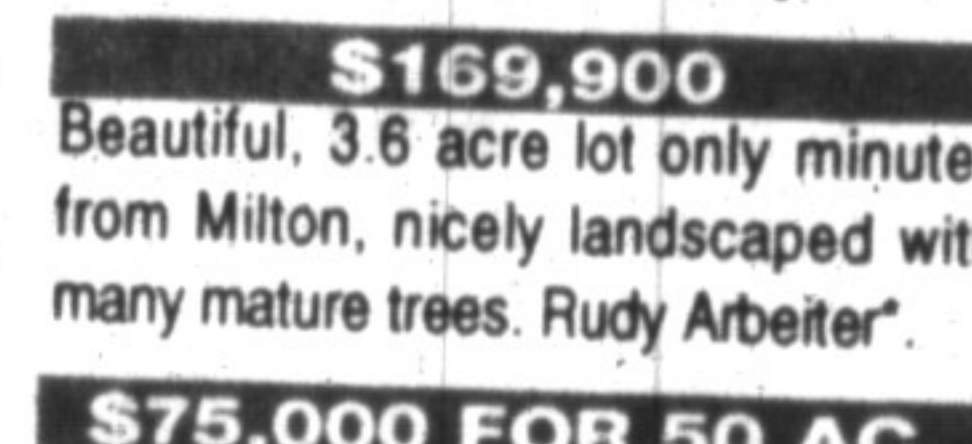
\$298,000

18 acre horse/hobby farm with barn, fenced paddocks, pond & woods. Lovely brick home with huge oak kitchen. Finished on both levels. Virginia Brazeau*



\$179,900

Customized for the entertainer. Oak kitchen with built-in appliances, main floor fam. rm. with bar & walkout to a gorgeous professionally landscaped yard with private kidney shaped pool. Backing onto park. Eva Gooding*



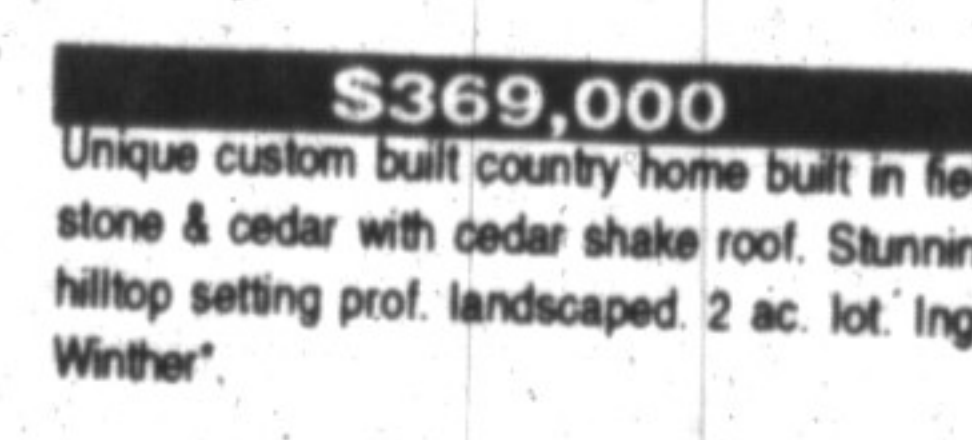
\$169,900

Beautiful, 3.6 acre lot only minutes from Milton, nicely landscaped with many mature trees. Rudy Arbeiter*



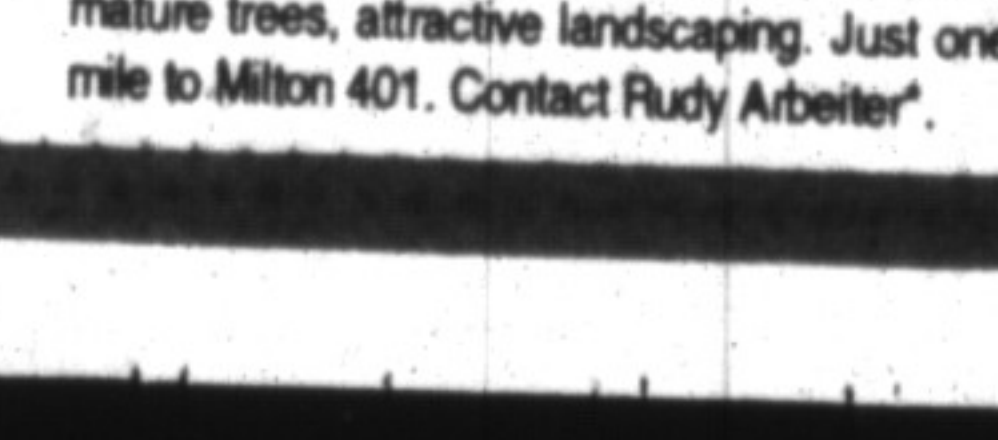
\$344,900

Custom-built contemporary set on 2+ acres, 4 bdrms, fabulous gourmet kitchen, spectacular views of the surrounding countryside. Petra Schwabe*



\$369,000

Unique custom built country home built in field stone & cedar with cedar shake roof. Stunning hilltop setting prof. landscaped. 2 ac. lot. Inge Wither*



\$169,900

3.6 acre building lot. Escarpment location, mature trees, attractive landscaping. Just one mile to Milton 401. Contact Rudy Arbeiter*



\$239,000

Building plans in your future? Superior 10 acre lot south of Campbellville with 3 bedroom bungalow. Super property for your executive home. Ross Runnalls**



\$189,900

Attractive 4 bedroom bungalow with new vinyl siding on 1/2 acre and only 4 minutes from the 401 Hwy. Barbara Crowe*



\$310,000

Campbellville horse farm. Atmospheric Cape Cod & small barn on 10 scenic acres, with pond & bridge prof. landscaped grounds. Inge Wither*



\$979,900

The perfect horse farm, beautiful arena, 31 boxstalls, farm house, sep. apartment, close to Milton. Denzil Lawrence*



\$449,000

5+ bedrooms & huge principal rooms, 2 fireplaces, pool & much more 3.5 acres & ideally located near Trafalgar Rd. Call Virginia Brazeau*



\$399,900

24+ Acres with stream & woods. Large raised Bungalow with nanny suite. Located just a few minutes to town. For details. Call Virginia Brazeau*



\$158,900

Country privacy plus all the conveniences including spacious eat-in kitchen & main floor family room. Totally renovated throughout. Call Eva Gooding*



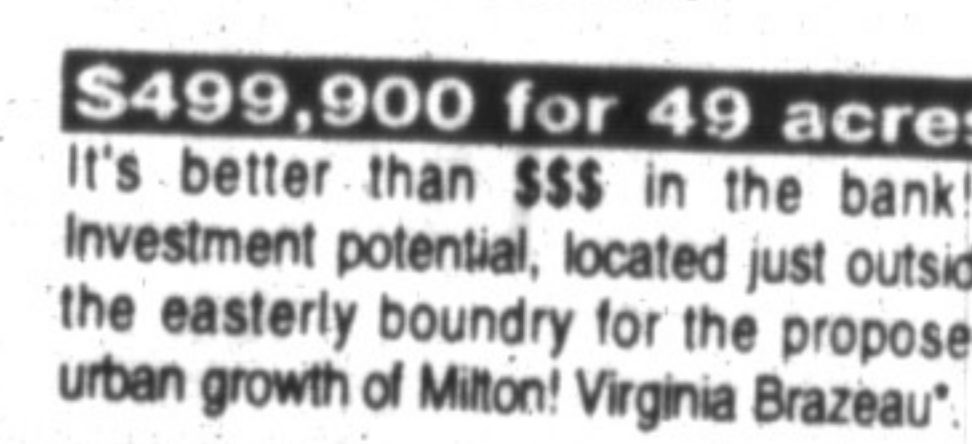
\$239,900

Express your individuality in the one of a kind, very well maintained & spacious including a future 3rd floor master wing or nanny's quarters. Located in one of Milton's finest areas. Call Eva Gooding*



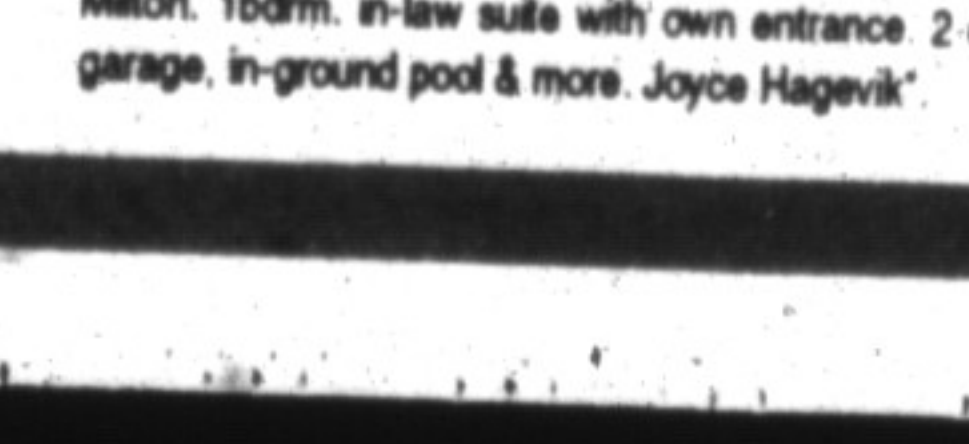
\$172,900

Great 4 bdrm. family home with separately fenced inground pool. Located on a quiet street. Close to schools. Barbara Crowe*



\$499,900 for 49 acres

It's better than \$\$\$ in the bank!!! Investment potential, located just outside the easterly boundry for the proposed urban growth of Milton! Virginia Brazeau*



\$259,000

Well decorated bungalow on 1/2 acre only mins. from Milton. 1bdrm. in-law suite with own entrance 2 car garage, in-ground pool & more. Joyce Hagevik*