

The Canadian Champion

Best Homes



\$485,000

ROYAL LEPAGE

MAPLE HILL FARM. Picturesque, tranquil setting on 12.8 acres, pine trees and a lovely Orchard. This beautiful Century 2 storey stone home features 4 large bedrooms, 3 bathrooms, a large country kitchen with breakfast room and main floor laundry. The family room with floor-to-ceiling fireplace and efficiency wood stove leads to a new deck and barbecue area. Many extra features are included with this property.

ROYAL LEPAGE REAL ESTATE SERVICES LTD.
AUDREA LEAR-COSTIGAN 878-8101



\$345,000

ROYAL LEPAGE

NATURE LOVERS DREAM. 4 bedroom pine home, 8 spacious rms. include main floor family rm., huge deck & 2 balconies, 25 acres, trails and ponds. 10 min. to 401 & GO.

ROYAL LEPAGE REAL ESTATE SERVICES LTD.
ED OR NORMA PROVEAU 878-8101

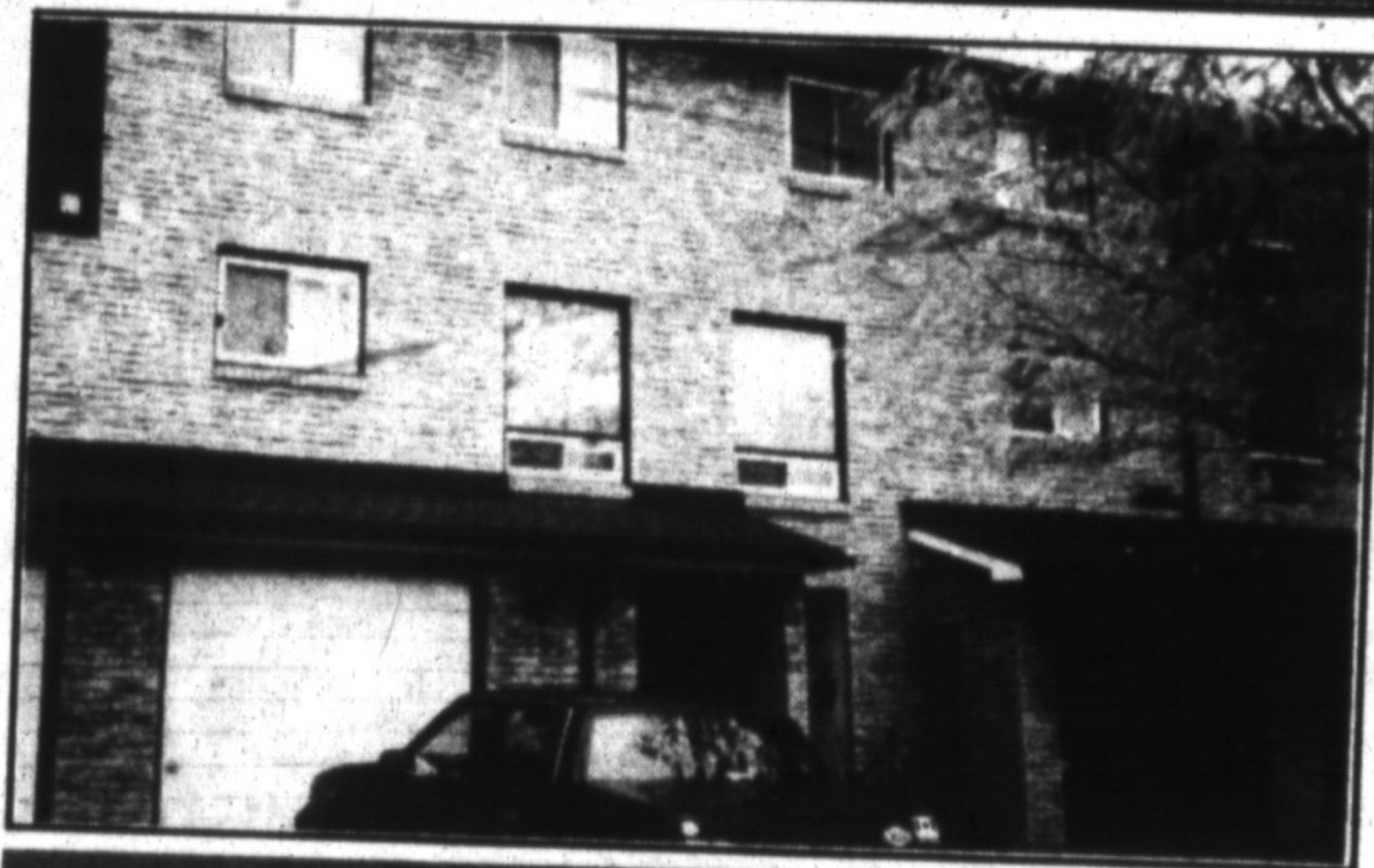


\$319,900

REALTY WORLD

COUNTRY BEAUTY. Located between Milton & Campbellville & situated on a mature, large lot is this Custom built, 4 bdrm., 5-level, back-split. Loaded with extras - for complete details about #121 please call:

REALTY WORLD - W.J. McCRUDDEN REAL ESTATE
DAN DELIC 876-1133



\$127,900

ADVANTAGE PLUS REALTY INC.

RAISED 2- STOREY Main floor family room with fireplace, garage. Move-in condition.

ADVANTAGE PLUS NEWELL REALTY INC.
AUDREY OR CHRIS NEWELL 878-4444

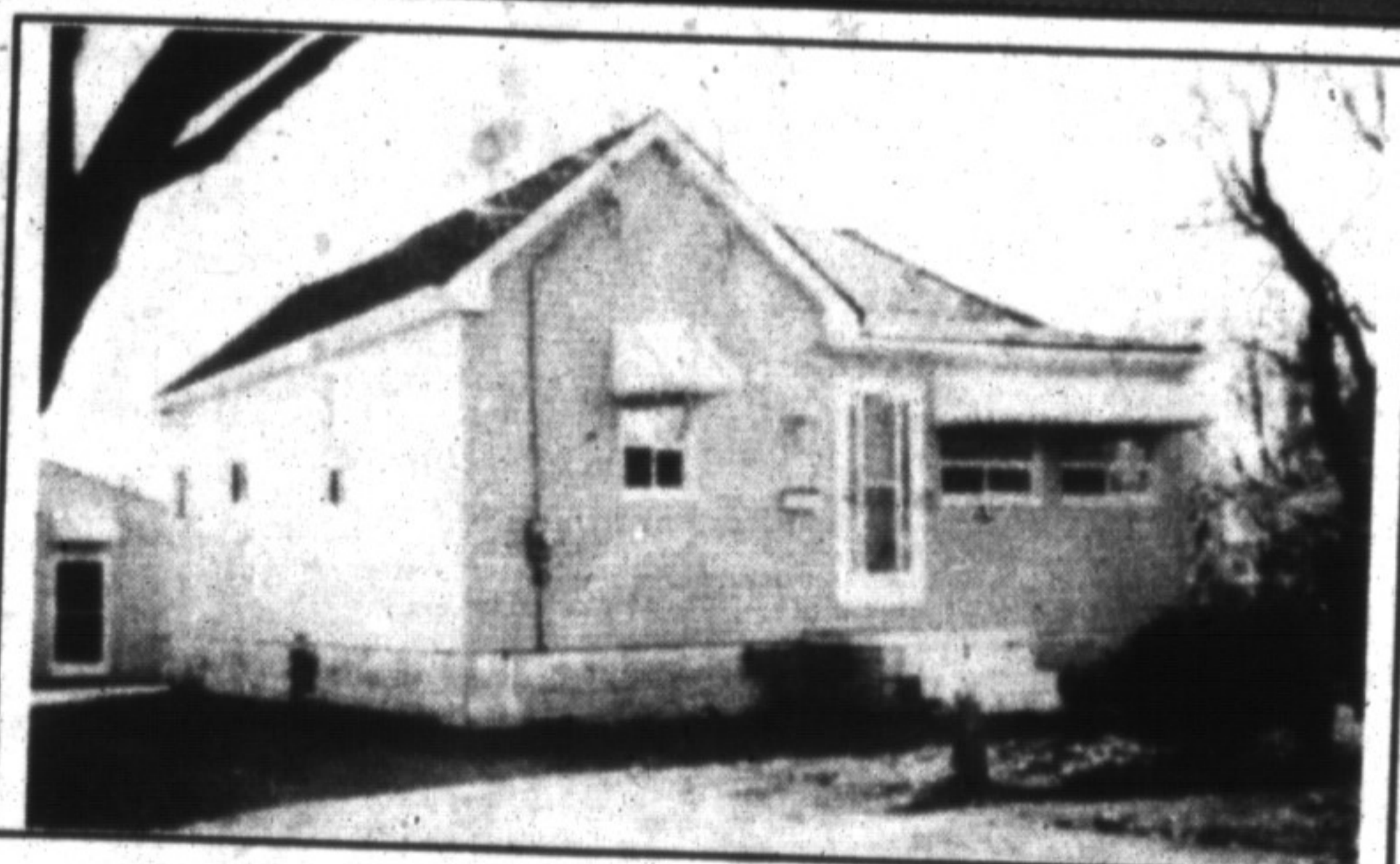


\$459,000

RE/MAX

MARK OF AFFLUENCE. Beautiful custom built home located in Campbellville estate subdivision. Features huge deck off kitchen, gorgeous cathedral ceiling and custom leaded glass doors.

RE/MAX MILTOWNE REALTY CORP.
GLEN THOMAS 878-7777



\$154,900

RE/MAX

88 MILES ST. MILTON, Includes fridge, stove, dishwasher, washer, dryer, new furnace, roof, siding and A.C.

RE/MAX MILTOWNE REALTY CORP.
LLOYD MOORE 878-7777