

BEST PEOPLE SOLD **BEST TOOLS SOLD** **BEST RESULTS SOLD**

ROYAL LEPAGE

Royal LePage Real Estate Services Ltd.
878-8101

RE5—The Canadian Champion, Wednesday, October 20, 1993



\$159,900
A very attractive price for a very attractive 4 Bdrm home. Remodeled kitchen, ceramic floor in foyer, beautiful living room and more. Contact Rudy Arbeter.



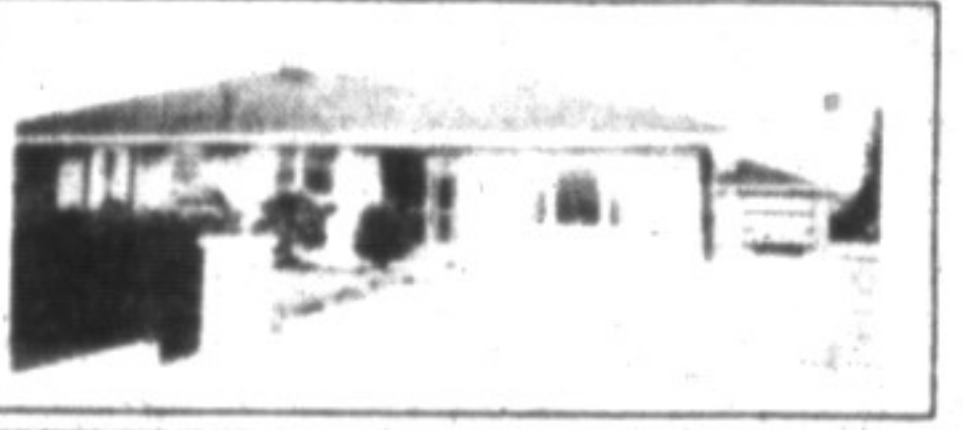
\$699,900
4,300 sq ft stone house with cedar shake roof. Lrg principal rooms through out. Set on prof. landscaped 5 Ac. lot in Campbellville. Inge Wither.



\$279,000
3 acres - oak kitchen, ceramic floors, 4 bedrooms, inground pool & a beautifully finished basement! Definitely not a drive-by! Call Virginia Brazeau.



\$298,000
18 acres, pond & run-in barn, 5 acres deer & woods w/ riding trails - all a bonus with this 12 year old raised bungalow. For details call Virginia Brazeau.



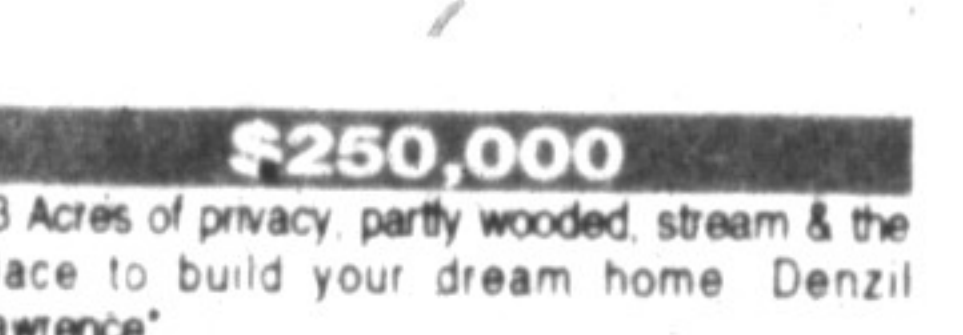
\$239,900
Workshop, orchard & 3+ bdrm home - Main floor laundry, rec. rm w/ wet bar & 3 bath. A lot for your \$\$\$ Norma or Ed Proveau.



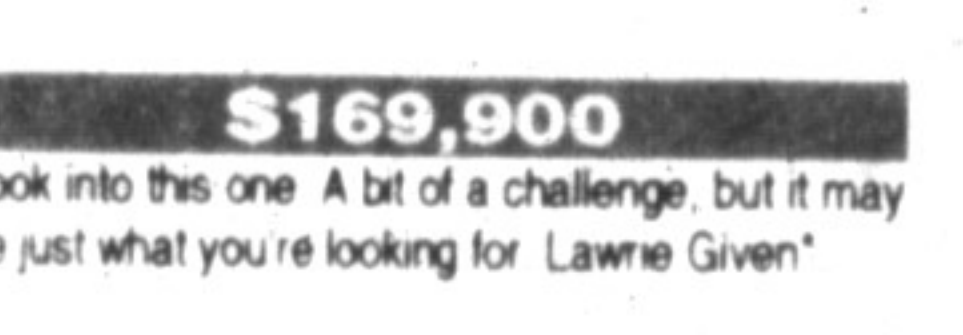
\$189,900
Reduced! Peaceful country living & only 4 minutes from Hwy 401. 4 bdrm bungalow with new vinyl siding on half an acre. Barbara Crowe.



\$324,900
Beautiful Jurgalow on tastefully landscaped lot. All the bells & whistles. Angela Silcock.



\$250,000
23 Acres of privacy, partly wooded, stream & the place to build your dream home. Denzil Lawrence.



\$169,900
Look into this one. A bit of a challenge, but it may be just what you're looking for. Lawrie Given.



\$239,900
Express your individuality in this one of a kind, very well maintained & spacious including a future 3rd floor master wing or nanny's quarters. Located in one of Milton's finest areas. Call Eva Gooding.



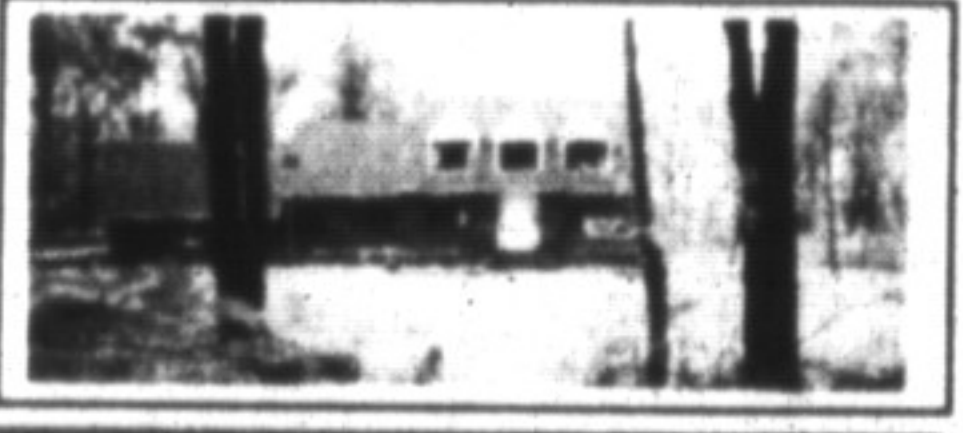
\$279,900
Affordable country home on 1.25 private acres. 3 + 2 bdrms w/o to deck & pool. Norma or Ed Proveau.



\$625,000
Hobby Farm or "Pick your own", the choice is yours. Set on 52 varied acres with a 50' x 100' steel barn, bank barn with offices & 3,500 sq ft. unique home. It's worth the "Drive to Moffat". Joyce Hagevik.



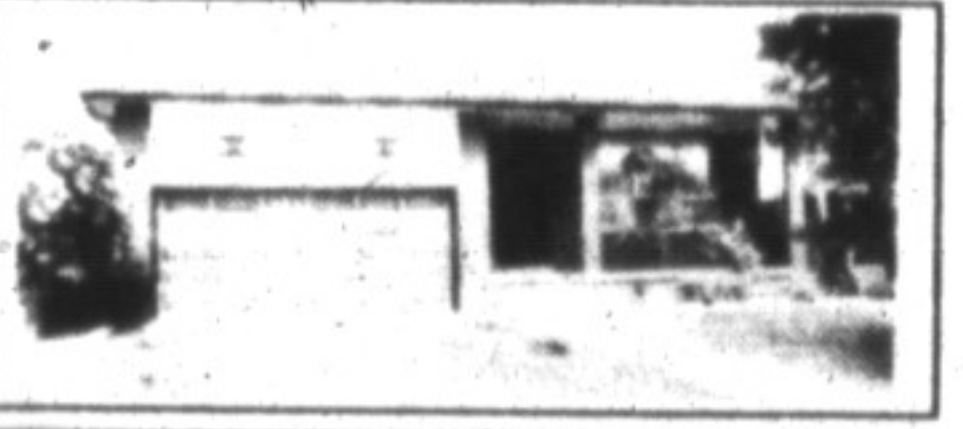
\$850,000
Glencarm Farm 1896. Beautifully restored & re-carpeted. 4,000 sq ft. main house, guest house & stable. 154 secluded Ac. with 3 ponds. Inge Wither.



\$359,900
5 beautiful acres surround this 6 year old brick home. Fabulous oak kitchen with Jennair stove & so much more. Call Virginia Brazeau.



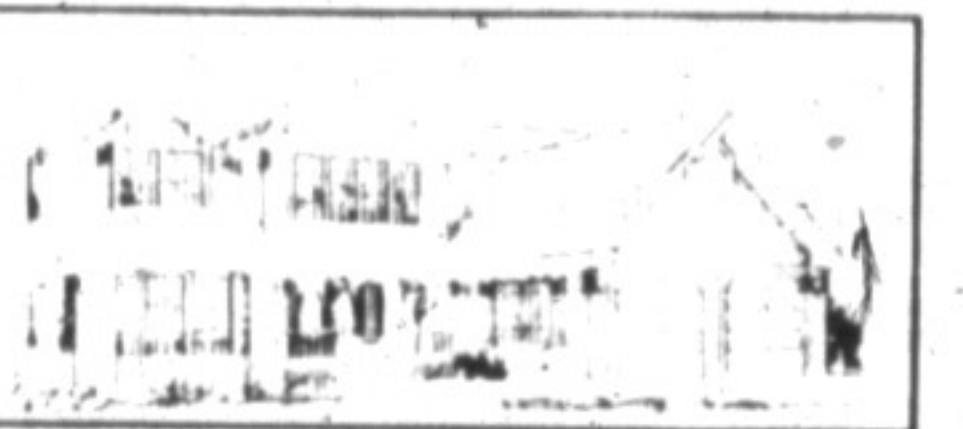
\$399,000
4 bdrms, mn. floor fam. rm., pond, & huge kitchen are just some features of this immaculate home. Call Sandi Kinsale.



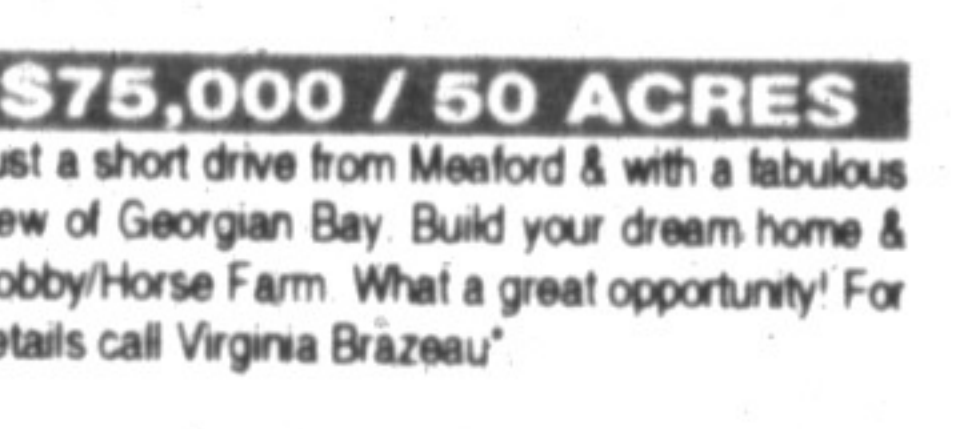
\$224,900
Add this up! All brick backspl., hardwood floors, holly-wood style kitchen, fam. rm. with fireplace, 3 bedrooms, cent. air & cent. vac. Barbara Crowe.



\$360,000
R/U 4 Recreation? App. 1/2 mile of trails, walk, ski or snowmobile & a 4 bdrm home all on 25 acres. Norma or Ed Proveau.



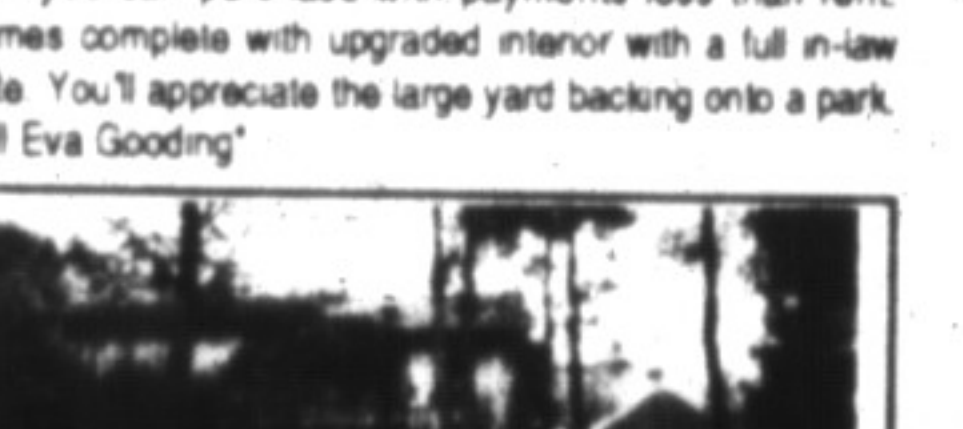
\$299,900
Outstanding quality - 3 bedroom home to be built - Moffat area - your chance to make your dreams come true. Barbara Ramsden.



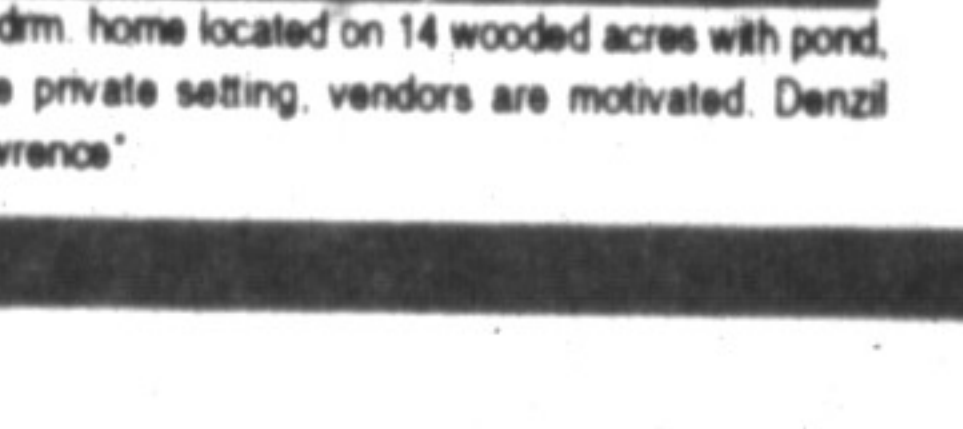
\$75,000 / 50 ACRES
Just a short drive from Meaford & with a fabulous view of Georgian Bay. Build your dream home & Hobby/Horse Farm. What a great opportunity! For details call Virginia Brazeau.



\$10,000 / ACRE
49 acres east of Milton - corner of Derry Rd. & 5th Line. Possible investment potential - It's worth looking into!! For information call Virginia Brazeau.



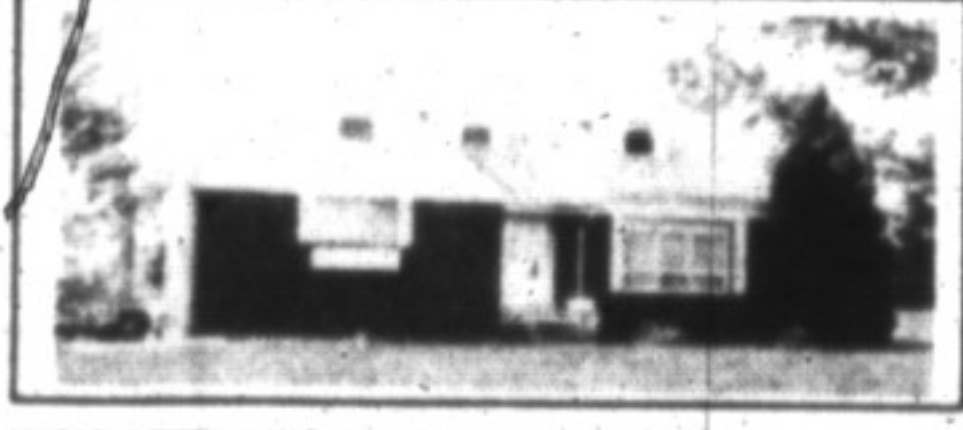
\$149,900
Now you can purchase with payments less than rent. Comes complete with upgraded interior with a full in-law suite. You'll appreciate the large yard backing onto a park. Call Eva Gooding.



\$254,500
3 bdrm. home located on 14 wooded acres with pond, nice private setting, vendors are motivated. Denzil Lawrence.



\$519,000
Exclusive Ennisclore Woods - offering a private lifestyle. This gorgeous home has all the bells & whistles & more, plus set on 2 well landscaped acres. Joyce Hagevik.



\$310,000
Campbellville horse farm. Atmospheric Cape Cod with french doors, solarium & garden room. 10 scenic acres with barn & pond. Inge Wither.



\$369,000
99 acre working hobby farm. Lovely Victorian Home, excellent bank barn & long lane. 20 min. to Milton. Call Virginia Brazeau.



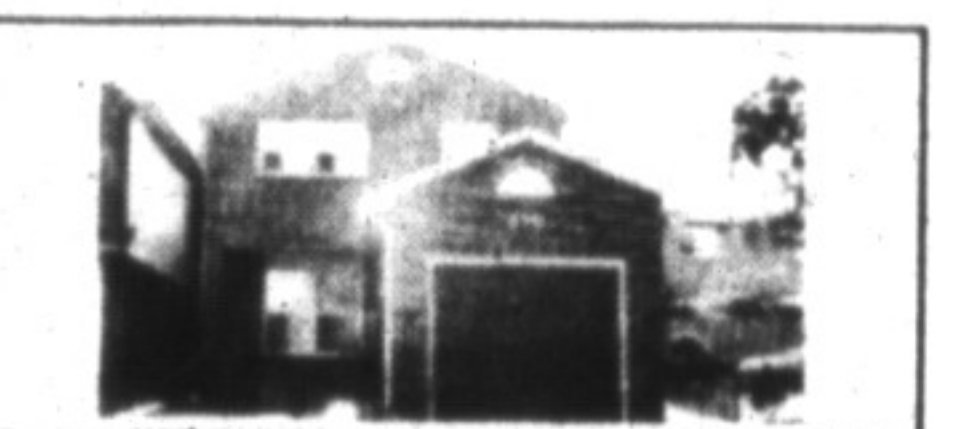
\$99,900
Walk to downtown - lots of parking - 3 bdrms, new windows, fully detached. Call Sandi Kinsale.



\$485,000
12 Ac. in a beautiful setting features 2 storey century stone home, 4 bdrms, 3 baths, main flr. fam. rm., fireplace, dbl. gar. Must be seen. A. Lear-Costigan.



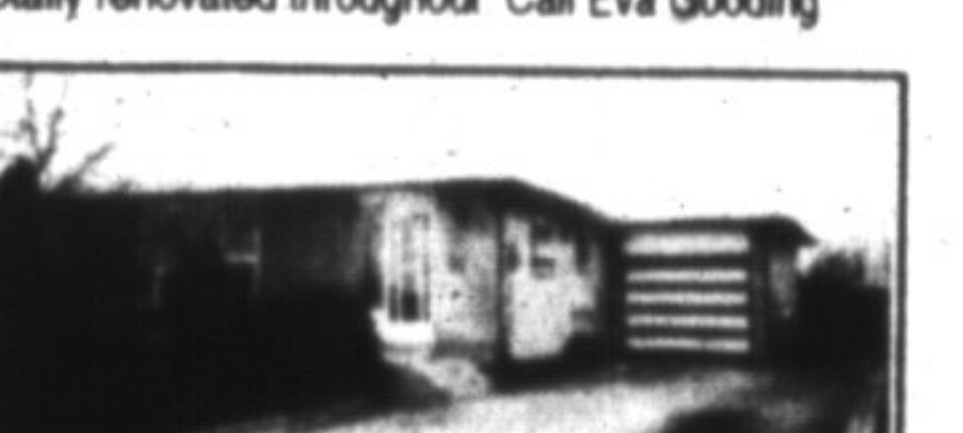
\$399,000
Custom home on 4 acres of wooded land with stream. Country living at its best! Ross Runnalls.



\$159,900
Begin the new year in your new home! Neutral decor, great yard and neighbourhood. 1994 possession preferred. Barb Lefebvre.



\$158,900
Country privacy plus all the conveniences including spacious eat-in kitchen & main floor family room. Totally renovated throughout. Call Eva Gooding.



\$179,900
Customized for the entertainer. Oak kitchen with built-in appliances, main floor fam. rm. with bar & walkout to a gorgeous professionally landscaped yard with private kidney shaped pool. Backing onto park. Call Eva Gooding.



\$575,000
Ballmore Farm. Historic 1886 stone house with lrg. newer wing, pool, stone barn with box stalls, mature Maples. 51 acres. Inge Wither.



\$519,000
Horses, horses, 10 acres, 1/2 mile stone dust track, 18 box stalls, 4 bdrm home, close to Mohawk. Denzil Lawrence.



\$799,000
Beautiful country manor set on 10 partly wooded Ac. & featuring formal living rm., large sep. dining rm., music rm., library, family rm., den etc. Inge Wither.



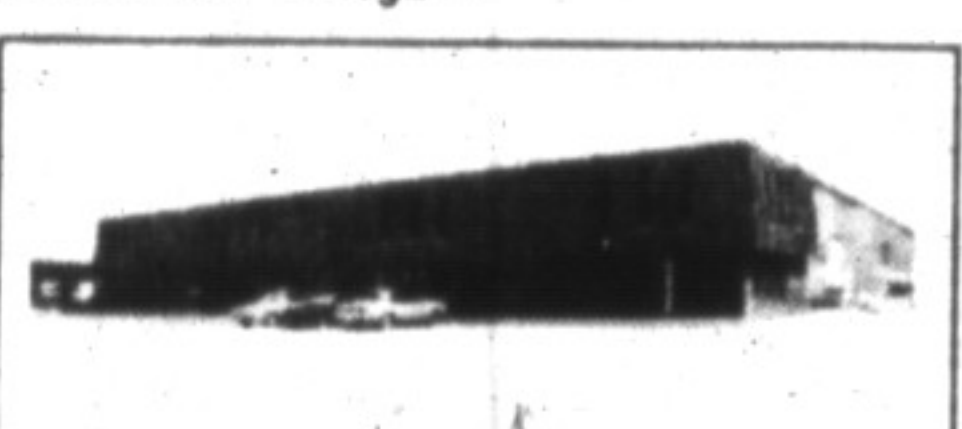
\$149,900
3 bedrooms, 2 baths, balcony & garage. Enjoy carefree living (where the condo fee includes heat/hydro/cable) within a short walk to downtown. Call Virginia Brazeau.



\$179,900
This all brick home is located just outside Milton on a 80' x 190' lot, features hardwood flooring, new oak kitchen, new roof & bathroom. Call Sandi Kinsale.



\$299,900
Reduced - special property on the escarpment - over 2 Ac., 2 storey, 4 bdrms, 3 baths. Try an offer. A. Lear-Costigan.



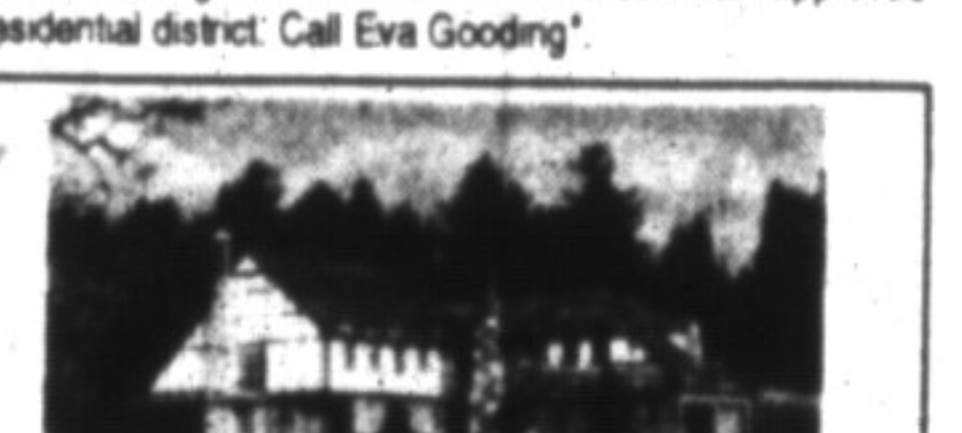
\$1,700,000
Industrial property on 5 acres with open storage and rail siding. Excellent investment potential. Ross Runnalls.



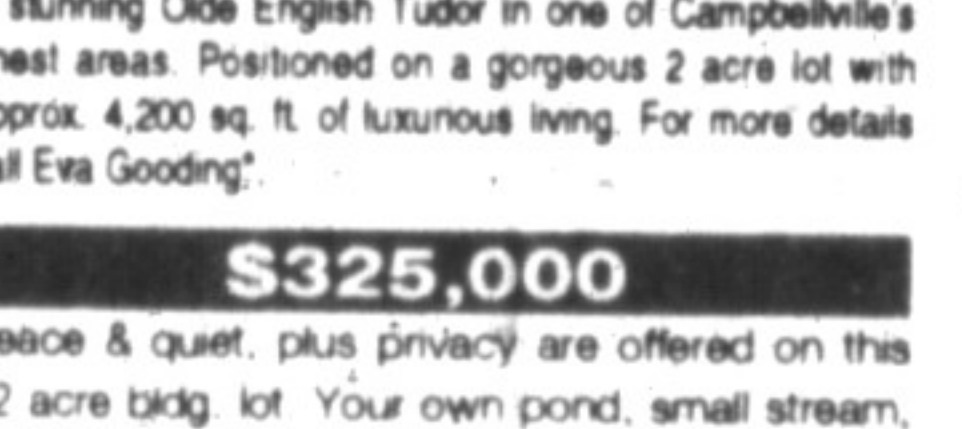
\$420,000
Horse lovers delight! Great location. Home features 4 bdrm main flr. fam. rm., laundry, w/o to fenced area. Call Josephine Perc.



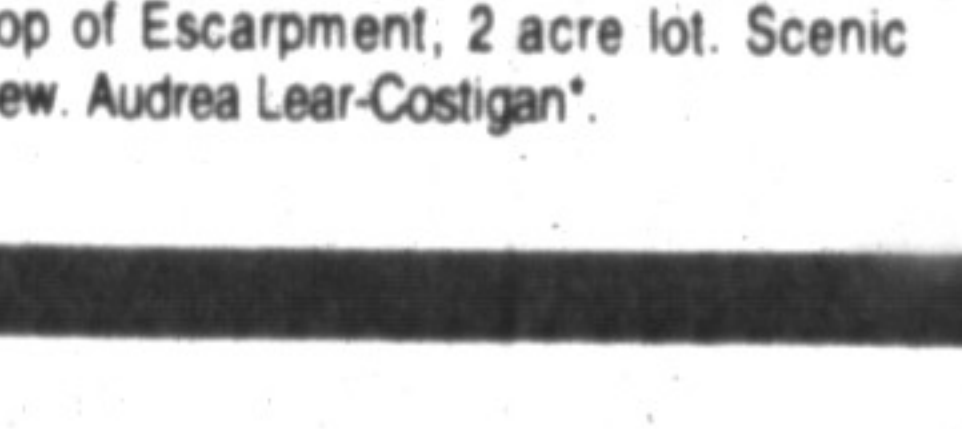
\$239,900
Most appealing for the largest family, 5 bdrms, 4 washrooms, large European kitchen, finished rec. room, all recent flooring and much more. Located in an approved residential district. Call Eva Gooding.



\$555,000
A stunning Old English Tudor in one of Campbellville's finest areas. Positioned on a gorgeous 2 acre lot with approx. 4,200 sq. ft. of luxurious living. For more details call Eva Gooding.



\$325,000
Peace & quiet, plus privacy are offered on this 52 acre big lot. Your own pond, small stream, varied vegetation are only a few of the "PLUS-ES". Come walk with me. Joyce Hagevik.



\$205,000
Top of Escarpment, 2 acre lot. Scenic view. Audrea Lear-Costigan.



\$1,900,000
Springhill Estate. 1830 stone manor (8,000 sq ft.), 2 storey Georgian & Coach house, apt. for staff, stone stable, 15 perforce Acres to view. Inge Wither.



\$229,900
Superb open concept home with pool, redecorated and almost totally upgraded (Kitchen, windows doors, furnace, flooring, etc.) Sandy Del Papa.



\$289,000
Limestone creek flows thru this beautiful wooded property on Guelph Line just north of Derry Rd. Brck home sits way back from road. Call Virginia Brazeau.



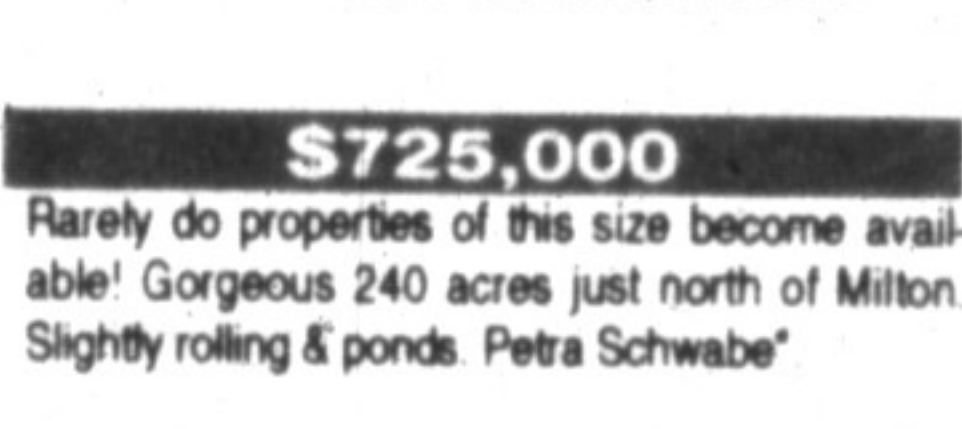
\$489,000
Your dreams can come true with this lovely home on 23 acres of privacy. Denzil Lawrence.



\$174,900
Great value! 4 bdrm split, 2 + 4 piece baths, fam. rm. with fireplace & patio doors to deck. Sandy Del Papa.



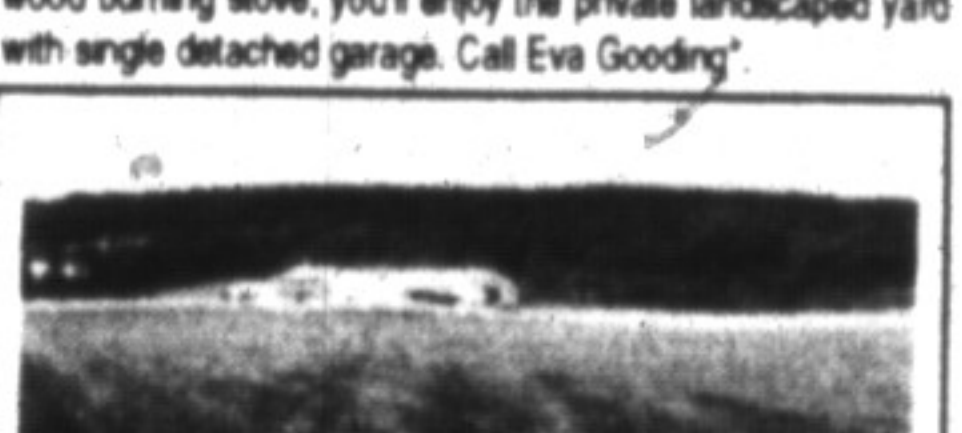
\$299,000
Roomy 4 bedroom farmhouse renovated with care and pride. Located in industrial park north of Milton. Combine your residence and business location and save! Barb Lefebvre.



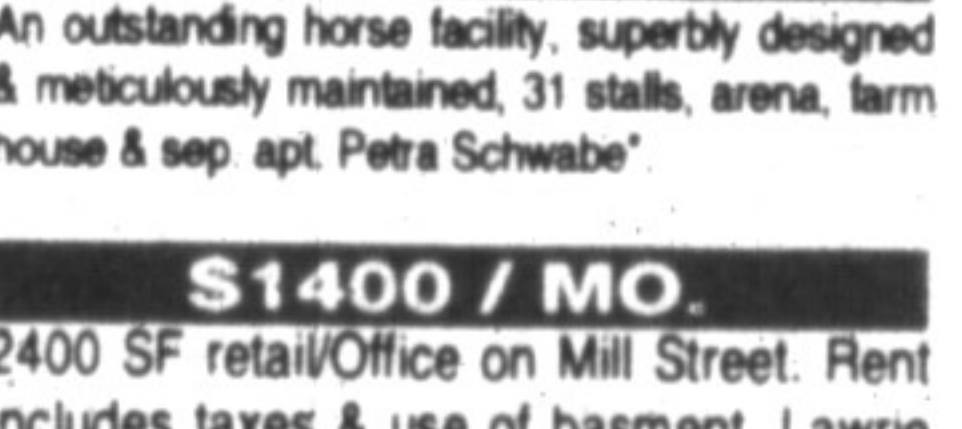
\$725,000
Rarely do properties of this size become available! Gorgeous 240 acres just north of Milton. Slightly rolling & ponds. Petra Schwabe.



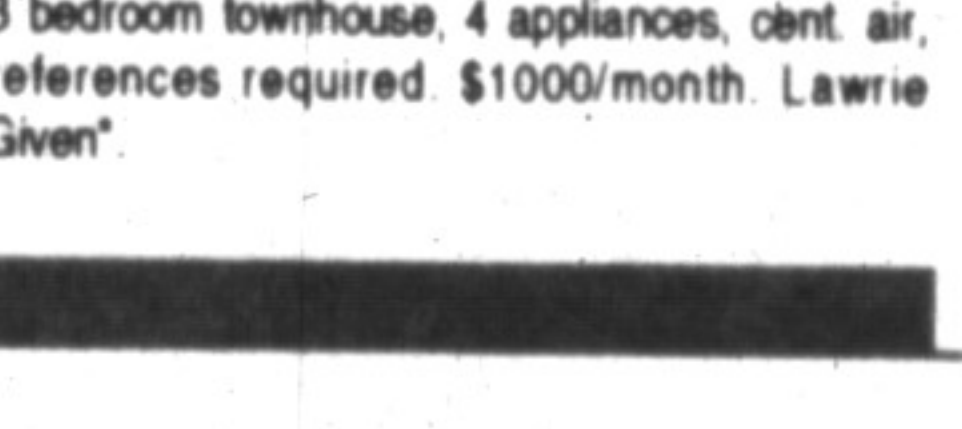
\$159,900
2.8 Ac. in prestigious Ennisclore Woods. Call for drive by directions. Lawrie Given.



\$174,900
Charming century home with unique antique features, recent pine kitchen with built-in appliances, a lovely sunroom with wood burning stove, you'll enjoy the private landscaped yard with single detached garage. Call Eva Gooding.



\$979,000
An outstanding horse facility, superbly designed & meticulously maintained, 31 stalls, arena, farm house & sep. apt. Petra Schwabe.



\$1400 / MO.
2400 SF retail/Office on Mill Street. Rent includes taxes & use of basement. Lawrie Given.

RENTAL
3 bedroom townhouse, 4 appliances, cent. air, references required. \$1000/month. Lawrie Given.