

# DATELINE

Dateline is a free listing of coming events only, available to local community groups to assist in promoting their future events. Only charitable or non-profit community groups may use this service. We can only guarantee one issue of publicity closest to the date of the occurrence although more insertions are possible if

demand is low. Notices for Dateline should be written and handed in at the office of The Champion, 191 Main St. E., mailed to us at Box 248, Milton, Ont., L9T 4N9, or faxed to 878-4943. The final deadline is noon Friday for Wednesday's edition and noon Wednesday for Friday's edition. No items

for Dateline will be accepted by telephone.

## Friday Oct. 1

The United Way of Milton holds its annual dinner auction **Mysterious Masques — A Night of Hidden Treasures** at Halton Hills Place. Viewing of auction items begins at 6 p.m. followed by dinner and entertainment. Tickets are available from Bergsma Paint and Wallpaper on Main Street East and the SoapBerry Shop at Milton Mall. For more information, call 878-0920.

## Friday Oct. 1-2

The fifth annual **Nassagaweya Art Show and Sale** takes place at the community hall in Brookville Friday from 4 to 9 p.m. and Saturday from 11 a.m. to 6 p.m. Admission costs \$3. The event features 22 area artists including Maureen Casteller, Vicki Ferras, Edna Ledsham, and Rosemary Simpson of Milton; Tina Newlove, Barbara Ayres and Ursula Reese of Campbellville; and Nicole Southworth of Moffat. Art by Halton students is also on display at the event, sponsored by Ebenezer United Church women.

## Saturday Oct. 2

St. John's Anglican Church presents **Jumble Jumbo Sale** at the Campbellville Lions Club Hall from 9:30 a.m. to 2 p.m. The sale includes furniture — old-style chesterfield and chair with wooden feet —, washing machine and dryer, books, dishes, white elephant table, baked goods, and light lunch. For more information, call 854-0328 or 854-2597.

## Tuesday Oct. 5

The Victorian Order of Nurses holds a **foot care clinic** at the Harmony Court apartments, 111 Ontario St., from 1:30 to 4:30 p.m. The cost is \$15. For further information or an appointment, call 827-8800. Nassagaweya Presbyterian Church

hosts a **beef dinner** with two sittings. For tickets, which cost \$10 for adults, call 854-2375 or 854-2435.

The Halton Vegetarian Association presents **Lasagna Bake Off Extravaganza** at Hugh Foster Hall at 7:30 p.m. Judges choose the best tasting vegetarian lasagna (including dairy) and the best tasting vegan lasagna. Prizes for winners. Admission costs \$2 for non-members. Sample the entries (bring own utensils) and witness a presentation, "Tips on Making Meat-Based Meals Meatless." To enter or for more information, call Karen Boothroyd at 877-0496.

The launch of access to community information via an online computer system takes place at Milton Public Library at 7:30 p.m. The partnership between Milton Community and Information Services and the Milton Public Library allows the public to access informa-

tion Milton's database while visiting the library, or by computer modem through personal systems in homes, schools, and offices.

A support group for separated women begins at Milton Community and Information Services (MCIS) in the Optimist Centre, 311 Commercial St., at 7:30 p.m. To register, call Women's Information and Support Services of Halton at 847-5520 or MCIS at 876-4756. No fee.

## Wednesday Oct. 6

The North Halton Literacy Guild hosts an **orientation evening** at 328 Guelph St. in Georgetown at 7 p.m. for people interested in applying for the following volunteer positions — board member, fundraising committee member, public relations committee member, and tutor. If interested, call 873-2200 for an application form. Space is limited.

## Let the Pro's handle your next vehicle purchase

At Milton Chrysler our sales staff are experienced, courteous and knowledgeable. All sales staff are qualified to discuss your requirements, trade value and financial arrangements, so come in and talk to a pro - you won't be sorry!



**1990 ACCLAIM LE**  
4 door, V6 engine, loaded.  
**VERY SHARP!**  
**\$9,995**



**1993 CARAVAN SE**  
V6, 7 passenger, tilt, cruise, air.  
**LIKE NEW!**  
**\$17,999**



**1992 GR. CARAVAN LE**  
Fully loaded, A.W.D., leather.  
**MUST BE SEEN!**  
**\$20,995**



**1992 GR. CARAVAN SE**  
V6 engine, loaded, 27,000 km.  
**HUNTER GREEN**  
**\$20,795**



**1992 PLYMOUTH ACCLAIM**  
V6 engine, air, tilt, cruise.  
**BRIGHT WHITE**  
**\$10,995**



**1989 CHEROKEE LAREDO**  
6 cyl, air, tilt, cruise.  
**BRIGHT RED**  
**\$10,995**



**1987 CARAVAN SE**  
V6 engine, 7 passenger, air.  
**WELL KEPT.**  
**\$7,995**



**1988 FORD TEMPO**  
4 door, air cond., red.  
**GREAT VALUE!**  
**\$4,995**



**1990 FORD ESCORT**  
2 door, 5 speed, white.  
**EXCELLENT VALUE!**  
**\$5,595**



**1991 PLYMOUTH ACCLAIM**  
4 door, auto, air, blue.  
**BEAUTIFUL!**  
**\$7,995**

Price plus P.S.T., G.S.T. and Licence Fee.

# MILTON DODGE JEEP

SALES 878-8877 81 ONTARIO ST. N. MILTON SERVICE 878-8808

## Flu vaccine available

The new flu vaccine is now available to prevent or lessen the effects of the Beijing, Texas and Panama strains of the influenza virus.

Flu vaccine is provided free to those aged 65 or older and to people with serious heart, lung or kidney disease, diabetes or cancer.

Others may purchase the vaccine, with a doctor's prescription, from local pharmacies. For more information, contact the Halton Regional Health Department at 825-6060 and ask for the communicable diseases program.



## CHERISH UPDATE

Would you like company for your child, a regular income and the support of a professional agency? Consider becoming a **CHERISH Home Day Care Provider**. Call Denise Lord at 876-4365.

Milton Community and Information Services  
311 Commercial Street, Milton

## MILTON'S LARGEST USED CAR DEALER



**1991 PONTIAC 6000 LE**  
Only 75,000 km!! V6, overdrive, air conditioning, AM/FM stereo & more. **\$9,975**



**1991 MERCURY GRAND MARQUIS LS**  
One owner, top of the line, fully loaded incl. drivers air bag, power seats both sides, immaculate, higher hwy. miles. **\$12,975**



**1991 BUICK REGAL LTD. 4 DR.**  
Only 85,000 km!! One owner, V6, fully loaded incl., power seat & aluminum rims, warranty. **SPECIAL \$12,975**



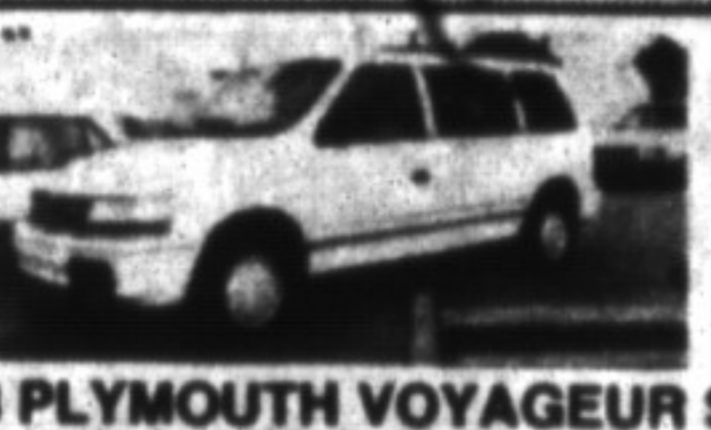
**1990 CHEV SILVERADO 1/2 TON**  
Only 82,000 km!! Local one owner, top of the line, fully loaded, warranty. **\$12,975**



**1992 CHEV ASTRO VAN**  
One owner, V6, eight passenger, air, cruise, tilt, delay wipers, P.W., P.L., rear heat, cassette, warranty. **SPECIAL \$13,896**



**1992 VOLKSWAGEN GOLF**  
Only 45,000 km!! One owner, five speed, moon roof, P.S., P.B., AM/FM cassette & more, balance Volkswagen Warranty. **\$10,975**



**1993 PLYMOUTH VOYAGER SE**  
Local one owner, full history available, V6, seven passenger, air bag, air, cruise, tilt, delay wipers, power locks, AM/FM cassette, overhead console, warranty. **SPECIAL \$15,975**

**OVER 100 CARS & TRUCKS TO CHOOSE FROM**

**FINANCING AS LOW AS 8.9%**  
\* On Approved Credit

## COMING SOON

**1991 GMC SAFARI EXTENDED CARGO VAN**



ANDREW GORMAN

A Family Business for over 30 years

# GORRUD LTD. USED CARS

410 Steeles Ave., Milton 875-2277



FRED ARNOLD