

#1 IN SAVINGS

BASED ON FULL M.L.S. SERVICE / 6% COMMISSION
MAXIMUM SERVICE • MINIMUM COMMISSION

PLUS



CAMPBELLVILLE CONTEMPORARY

\$489,900

"West Coast" style, Robertson-built. Windows everywhere. Your plants will love it. High ceilings, 2-level deck, pool potential.



CHRIS NEWELL

Sales Representative

#6 IN CANADA



RAVINE RETREAT

\$299,900

Custom kitchen, solarium, pond, covered rear deck, Inground pool, Perennials, Peaceful.



"ISLAND-IN-THE-PINES"

\$385,000

Up-to 4 bdrms. in this "Ontario" Stone farm house 150' x 250' lot. large stone patio. Birds galore.



803 SECORD

\$189,900

Professionally renovated beyond belief. Call Audrey or Chris for your viewing



"BY-THE-OAKS"

\$125,900

Backs onto park, popular 3 bedroom model. Near schools and tennis courts, Go Train.

890 CEDARBRAE

\$172,900

3 bedrooms, finished rec. room with fireplace, extra room plumbed for hot tub.



"LOSE THE KIDS"

\$159,866

Self-contained teen-in-Law suite with private entrance. Lots of windows. Quiet street. Make an offer.



4323 BRITANNIA RD.

\$339,000

Ravine lot, multiple walkouts, ensuite of your dreams & windows everywhere.



DESIRED LYDIA

\$264,900

Basically new 1-1/2 storey. Professionally landscaped, upgrades galore. Get it before it's gone!!



AUDREY NEWELL

Broker

MAXIMUM SERVICE

FROM

3 1/2% Real Estate Commission

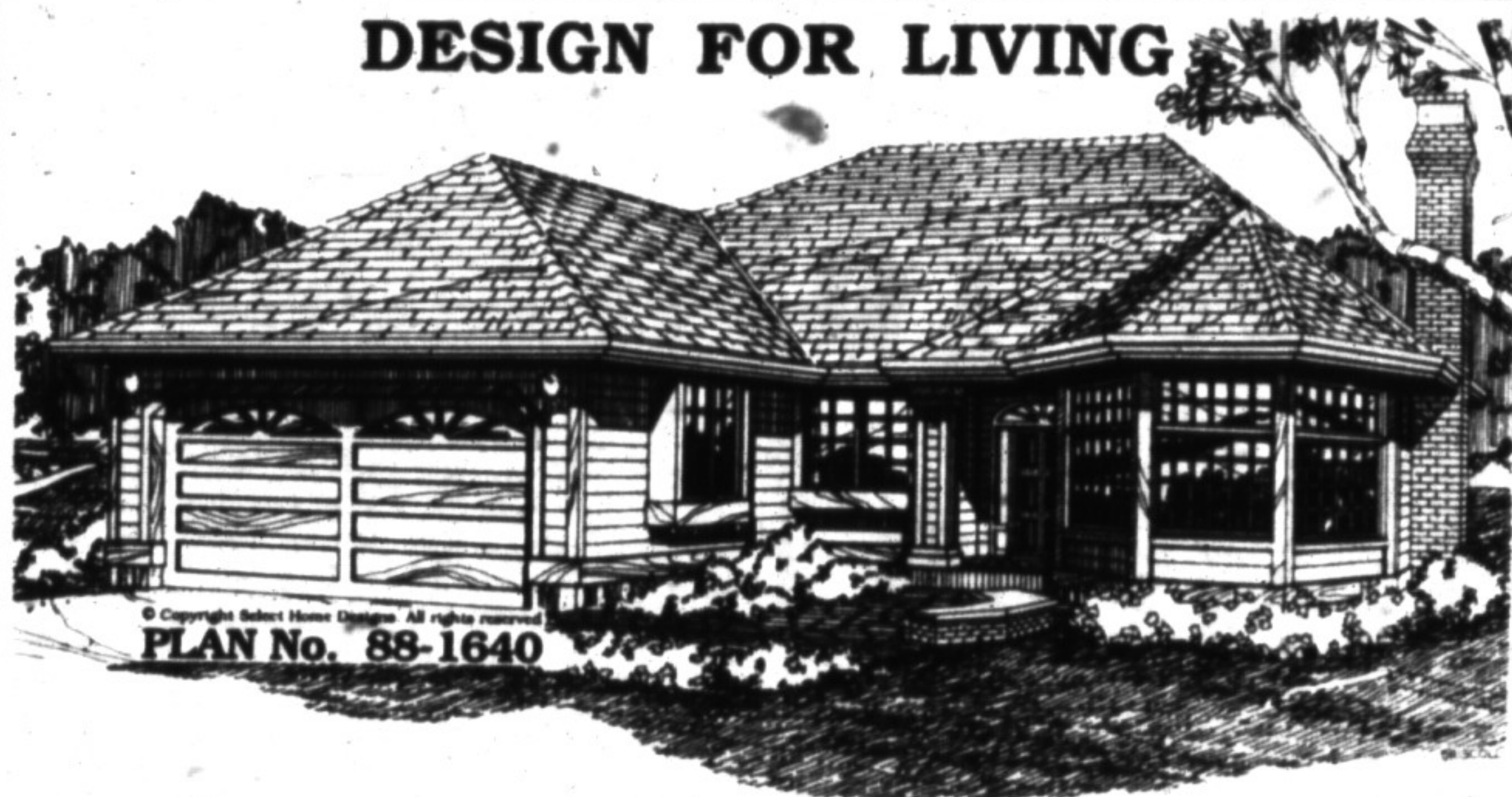
Opening Sept. 7 at IGA plaza

ADVANTAGE PLUS NEWELL REALTY INC.

CALL FOR A FREE MARKET VALUE APPRAISAL

878-4444

DESIGN FOR LIVING



PLAN No. 88-1640

Rancher offers two exterior finishes

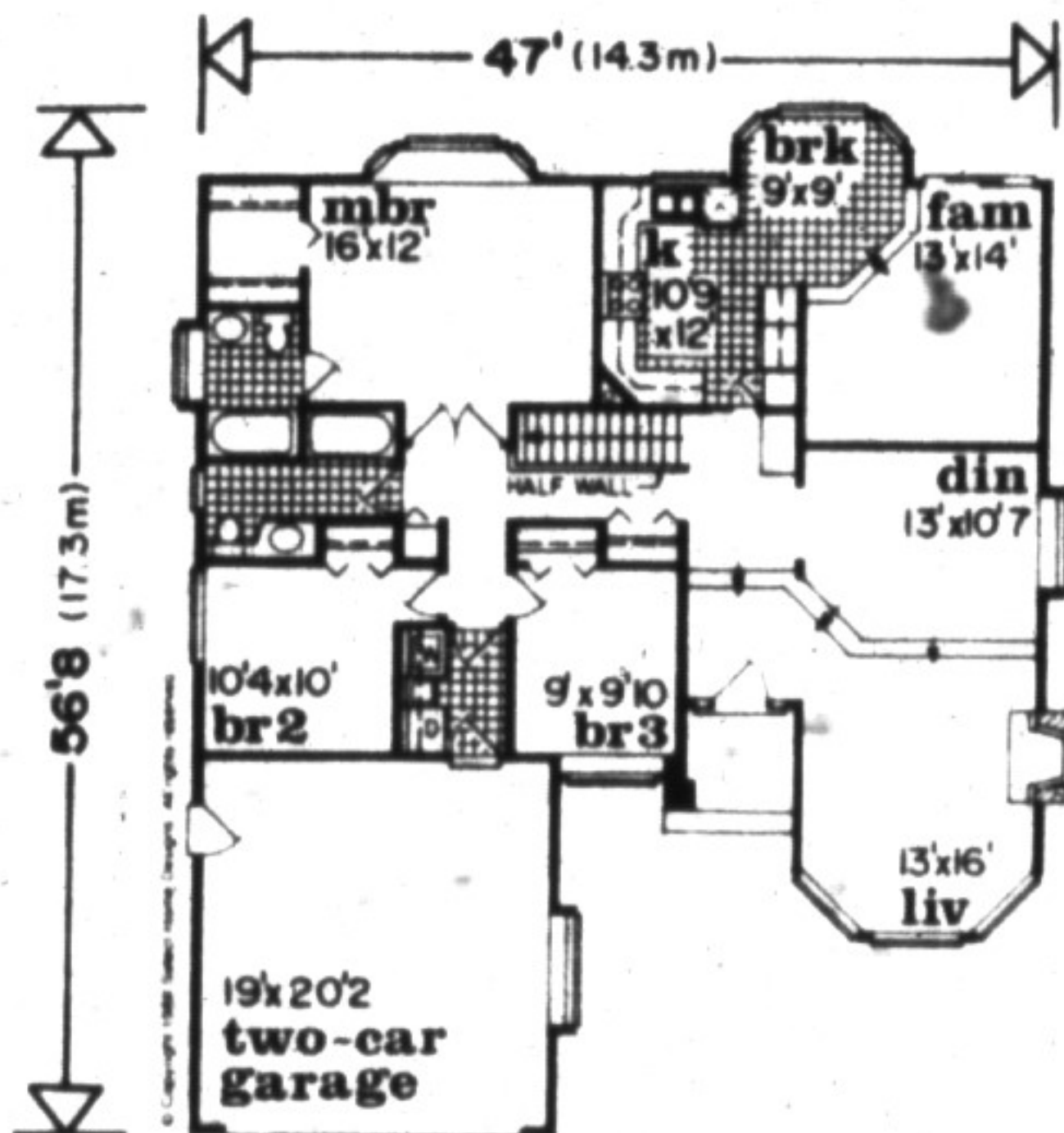


Plans include all exteriors shown

SELECT HOME DESIGNS

- Elegant design offers choice of exteriors, brick or horizontal siding.
- Large windowed-bay and hip roof accentuate exterior.
- Entry flows into sunken living room level and adjoining dining room.
- Breakfast bay, with greenhouse windows, connects kitchen and sunken family room.
- Sliding glass doors from patio open to family room.
- Master bedroom features cozy window seat, walk-in closet and three-piece ensuite with soaking tub.
- Two-car garage accesses main-floor laundry room.
- Plan includes basement and crawl space options.

Send for Canada's largest plan book



1640 sq.ft.

with more than 500 home plans, including a wide variety of architectural styles, from luxurious brick manors to affordable bungalows, only \$9.95 (including shipping and GST). To order using VISA or MasterCard, call toll-free 1-800-663-8739 or send cheque or money order to Home of the Week, c/o The Canadian Champion, 382 West Broadway, Vancouver, B.C., V5Y 1R2.

Try our energy quiz to see if you're saving money

Are you an energy wise homeowner? Try this quiz to find out.

Answers

1. When insulation work is undertaken, it is important to meet or exceed the recommended thermal resistance values. Can you match the value or range of values listed below to the correct area?

- RSI 4.7 (R 27)
- RSI 2.2 (R 13)
- RSI 4.7 to 7.1 (R 27 to 40)
- RSI 3.0 to 4.5 (R 17 to 26)

- roof or ceiling
- floor over unheated spaces
- frame walls
- basement walls

2. True or false?
 a) The thermal resistance value of insulation is based solely on thickness. 25 millimetres of any type of insulation will always insulate as well as 25 mm of another.

b) Increasing insulation is always the first step homeowners should take to improve the energy efficiency of their homes. It's the best investment for your energy conservation dollar.

c) Fluorescent light use 60 to 75 per cent less energy to produce the same amount of light as incandescent bulbs - and last longer.

d) For each degree you set your thermostat above 20 C (on a 24-hour basis), your fuel consumption will increase an average of 5 per cent.

e) Caulking materials are all the same. Any one type can seal the different joints in your house as well as another, so it makes sense to buy the least costly product.

f) Because hot air rises, insulating the attic will generally make a house passably energy efficient.

1. a-2; b-4; c-1; d-3.
 2. a) False. The thermal resistance of insulation is not based solely on its thickness. It is measured in RSI (metric) or R (imperial). The higher the RSI or R value, the better the material insulates. In some cases, two mm of one type of insulation can have a lower thermal resistance value than one mm of another material.

b) False. No single efficiency measure will always be most appropriate in every case. Assess the air leakage in your home, existing levels of insulation and the condition of the heating system before beginning an energy conservation program.

c) True. Small energy saving measures like changing from incandescent to fluorescent fixture can really add up.

d) True. And the reverse is also true: for each degree you set your thermostat below 20 C on a 24-hour basis, fuel consumption will drop by about 5 per cent.

e) False. Some caulking materials are safe or appropriate only for use outside. Others are designed for special applications, such as areas subject to high moisture levels. Some materials dry clear and others can be painted over after they are dry.

It is always best to choose carefully as many materials as required for the applications you have planned.

f) False. Heat moves in many directions - up, down or sideways - as long as it's moving from a warm spot to a colder one. Attic insulation will help improve the energy efficiency of your home but by itself will not make your home energy efficient.