

The Canadian Champion, Wednesday, August 25, 1993—A16

RE/MAX

Miltowne Realty Corp
 Sold more homes since 1983
 22 Ontario St. South 878-7777

MARILYN ANDREWS
 878-7777

- ACREAGE CARLISLE AREA**
- 32 Acres with pond, cold storage. - \$285,000
 - 74 Acres, underground irrigation, possible future residential. - \$750,000
 - 91 Acres, 2 irrigation ponds, tiled, duplex. - \$575,000
 - 99 Acres, lovely house & barn, pond site - \$525,000
 - 190 Acres available in 1 parcel.

BUSINESS FOR SALE
 Garage/Service Station, good income, 3 bedroom home in Village of Kilbride, growth potential is excellent. Asking \$475,000.

LEASE
 Beautifully finished office space, 2,000 or 4,000 sq. ft., move-in condition, good location. Asking \$7.50 p.s.f.

MARILYN ANDREWS

INTRODUCING DUFF HOUSE ESTATES

- 5 only estate lots
- Draft plan approved
- 4.22-6.20 acres
- Highway 25 just north of Chudleigh's
- Valley, creek, trees, view!!!
- A breathtaking home site
- Asking \$129,900 to \$249,900

CALL FOR DETAILS

HEATHER ASHBEE
 Sales Representative
 878-7777 OFFICE
 854-0543 RES.
 Tor. Line: 825-4485



RARE 1493 FT. ROAD FRONTAGE
 15 acre, wooded lot, custom oak kitchen overlooks fabulous sunken family room. 4 bdrms. plus nanny's apt. with sep. entrance. Great investment at \$395,000.



DELIGHTFUL CONTEMPORARY
 On a wonderful 5 ac. lot. Extensive landscaping & decking. Cathedral ceilings & skylights. Shows a "10". \$324,000



COUNTRY FEEL WITH TOWN CONVENIENCE
 Town water! 1/2 acre mature country lot finished top to bottom, 4 bedrooms, large kitchen, family room with fireplace. \$229,000



BUILD YOUR DREAM HOME BROOKVILLE ESTATES
 Many designs & 5 lots to choose from. Get details from Heather.



EXQUISITE EXECUTIVE BUNGALOW
 1.18 lot nestled by escarpment, very spacious, 4 walkouts, 3 stone fireplaces, 4 bedrooms, 3 baths, town water. View with Heather



BRAND NEW CUSTOM HOME
 Builders model, app. 2,500 sq. ft. on 1.5 acres. Brookville Estates. Upgrades galore, you'll fall in love with the hunter green & white custom kitchen overlooking the sunken family room. Rich random oak hardwood flooring. Plush broadloom & more. \$329,500.

RE/MAX FOR SALE • RE/MAX SOLD • RE/MAX FOR SALE • RE/MAX SOLD

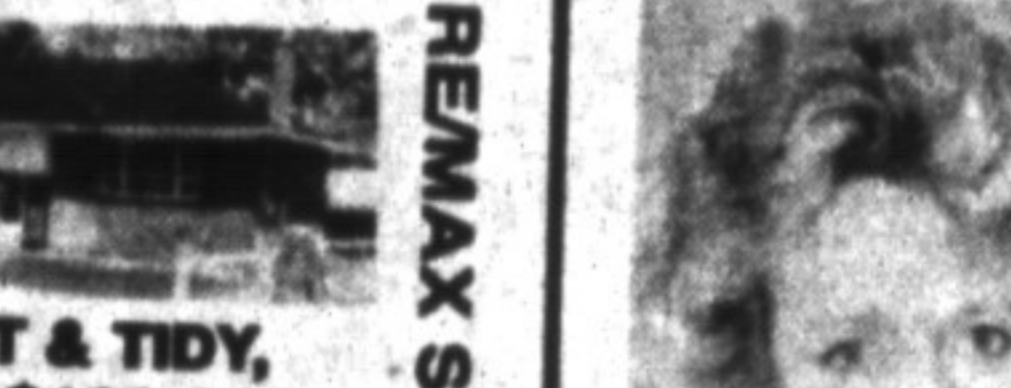
MOE MILJOUR
 OFFICE 878-2365
 HOME 876-4577
 Broker Assoc.



EXECUTIVE - ALL BRICK - \$259,000
 QUIET STREET - LARGE YARD - Four bedrooms, Mn Floor Family Rm with fireplace, Central Air, Professionally finished Rec. Rm., three Washrooms, separate Dining Rm. Tastefully decorated. Contact listing Broker Moe Miljour. \$259,000.



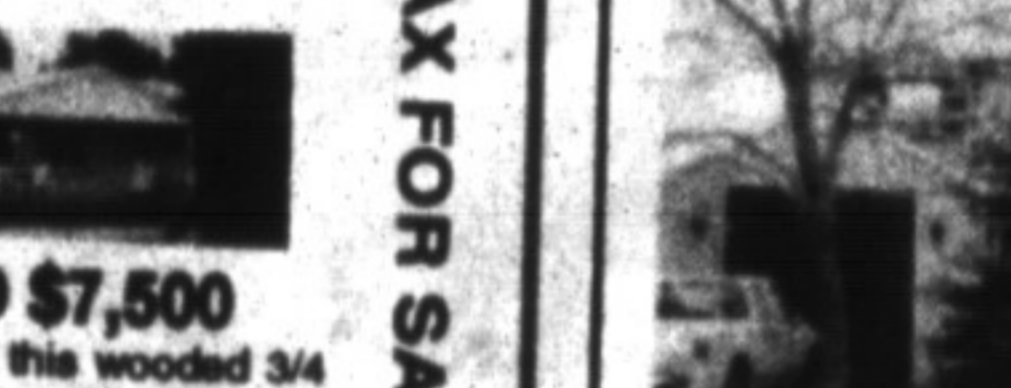
"COOL POOL" \$172,000
 Large private yard backs to parkland with inground pool, close to schools. Three-bedroom bungalow with beautiful new kitchen, large recreation rm. with fourth bedroom and workshop. New price \$172,000.



NEAT & TIDY, NOW \$199,000
 Cute and cozy 3 bdrms., new Oak kitchen. In the bsmt: an extra large rec. rm., small kitchenette, a 4th bedroom and a 3 pc bathroom at ground level. Central air - 1/2 acre quiet location south of Milton. Contact listing Broker Moe Miljour.



PERFECT STARTER NOW \$161,500
 A nice yard with huge trees backing onto a large park. Three bedroom bungalow with new windows, separate garage and high efficiency furnace. Contact listing broker Moe Miljour.



REDUCED \$7,500
 Plenty of privacy on this wooded 3/4 acre location with excellent view of the escarpment. A comfortable brick bungalow, double garage, inground pool, F.P. in living room, hardwood floors, 2 pc. ensuite in master bdrm, large rec. room with F.P. and bar, three washrooms. North of Lowville on No. 8 Sideroad. \$219,900. NOW \$202,500.

RE/MAX FOR SALE • RE/MAX SOLD • RE/MAX FOR SALE • RE/MAX SOLD

SHERYL GRAY
 Sales Representative
 Business: 878-7777
 Residence: 875-1121
 24 hr. pager



ESPECIALLY FOR YOU!!!
 Call today to see this freshly decorated 3 bedroom semi 4-2 piece bath, eat-in kitchen, finished basement, central air and more. Ask for Sheryl Gray 878-7777.

The **"Dynamic"** Home Selling Plan

Steven J. Porter
 Sales Representative
 Serving Oakville & Milton
 878-7777
 825-4485
 Show a sign of success



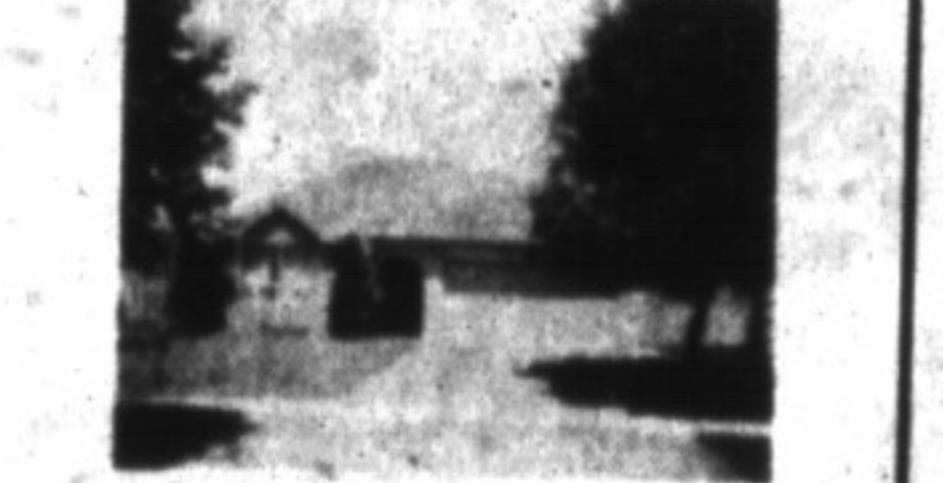
TIP-TOP TOWNHOME ONLY \$125,900
 A spotless, upgraded three bedroom townhome featuring main floor family room with fireplace, main floor laundry room, single car garage, use of swimming pool & Rec. Hall. Not one to be missed. Call Steven J. Porter.



NEAT AS A PIN
 Showroom condition home featuring 3 bedrooms and a den, eat-in kitchen, fabulous tudor style rec room with fireplace, a large mature yard and many fine upgrades. A must to see. Call Steven J. Porter. Asking \$189,900.



COUNTRY CLOSE TO TOWN
 Four bedroom side split on a beautifully treed one acre property only 5 minutes north of Milton. This home features an oversized living room & dining room, 2 fireplaces, 1 3/4 bathrooms, double garage and natural gas heating. Won't last. For appointment call Steven J. Porter.



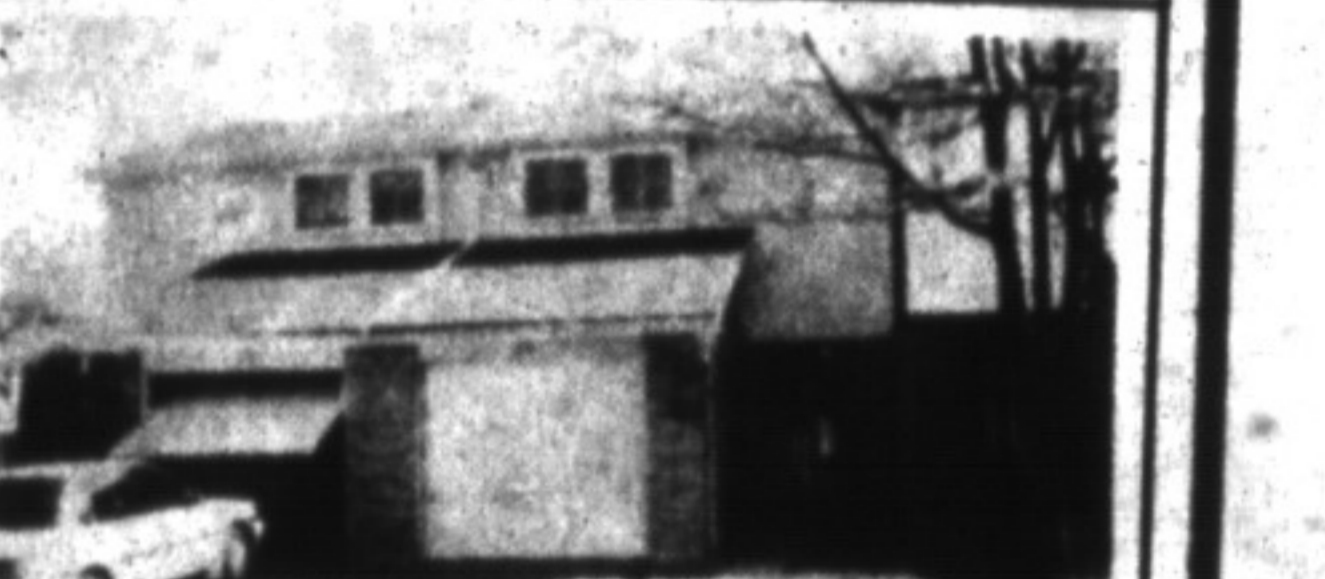
BUNGALOW WITH POOL
 Large, Bronte Meadows area, 3 bedroom bungalow. Features main floor laundry room, rec room with fireplace, double garage, central air, inground oval pool, deck and more. Feature price \$189,900. Call Steven J. Porter to preview.



AFFORDABLE COUNTRY
 3 bedroom, country, two-storey semi on 1/2 acre. Well-kept & well maintained, move-in condition only minutes outside Milton at the foot of the escarpment. Action Price \$115,500. Don't miss out, call Steven J. Porter.



YOUNG NEIGHBOURHOOD YOUNG FAMILIES
 The perfect 3 bedroom home for the new family. Close to shopping and schools. This fine home features central air, woodstove, double driveway, garage, fenced yard and other wonderful benefits. Within the average budget at only \$155,900. Call Steven J. Porter for your exclusive preview.



TAKE A BIG STEP FORWARD
 This lovely townhouse is super for the 1st time buyer, 3 bedrooms, finished basement, upgraded broadloom, freshly decorated, pool. \$125,900. Ask for Sheryl Gray 878-7777.



BEAUTIFUL BRICK HOME
 Listed \$269,900 situated on lake with pond, stream and pool. 3+ bedrooms, finished basement, 2 car garage, woodburning stove, 4-2 baths. Ask for Sheryl Gray 878-7777.



RAVINE LOT - LAURIER AVENUE
 Popular 2-Storey model 3+ bedrooms, central air, freshly decorated, many inclusions, condo fees \$149.00 (includes cable) \$139,900. Ask for Sheryl Gray 878-7777.

JP SOLD JP SOLD JP SOLD JP SOLD

LOOK
 Yes the economy is low! If it wasn't you would pay almost double for these units. 1,300-6,800 sq. ft. from \$39.50 per sq. ft. Vendor financing at 6-7.5%. Call JP.

EXECUTIVES
 Four bedrooms, 3 bathrooms, main-floor family room with fireplace, huge eat-in kitchen, formal living & dining areas, landscaped gardens & lots more, ready to move in. Asking \$229,900. Call JP for more details.

LIFESTYLES
 Situated on 2 acres in Enniscorthy you'll find this spacious 4-bedroom custom-built home. Large open kitchen with Barzoffi custom cabinets, family room and living room with fireplace, formal living room perfect for entertainment. \$474,900. Call JP.

WANTED
 10 Acre plus mini horse farm. Must be within 15 minutes to Milton, ready to move into and no more than \$300,000. Please call J.P. with details.

JOHN (JP) PEARS
 Sales Rep
 Office: 878-7777
 Res: 878-6859
 Tor. Line: 825-4485
 RE/MAX MILTOWNE REALTY CORP.
 Demand the Very Best!

Your Business Helps Support Children's Miracle Network

JP SOLD JP SOLD JP SOLD JP SOLD

RE/MAX

RAVINE LOT - LAURIER AVENUE
 Popular 2-Storey model 3+ bedrooms, central air, freshly decorated, many inclusions, condo fees \$149.00 (includes cable) \$139,900. Ask for Sheryl Gray 878-7777.