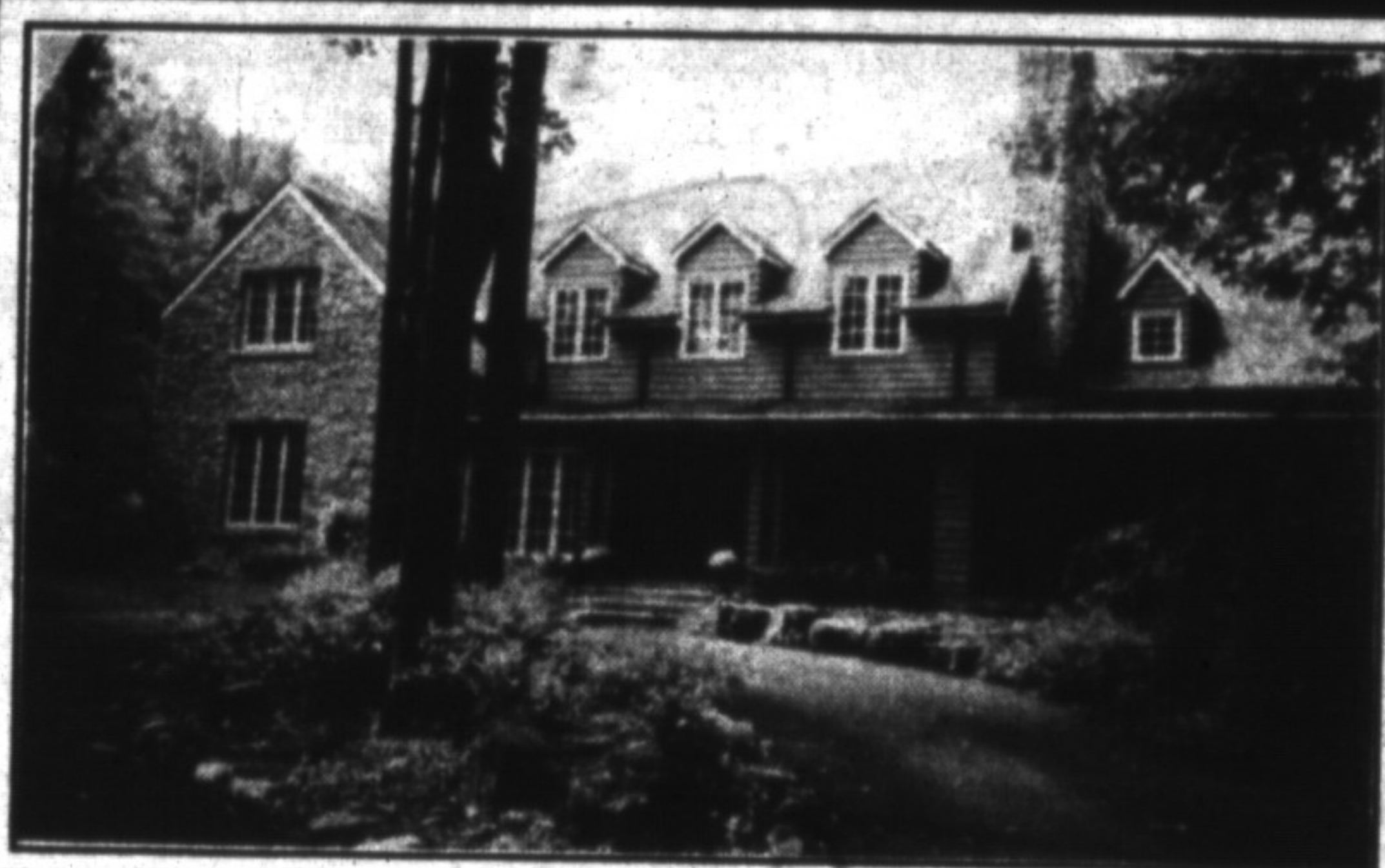


The Canadian Champion

# Best Homes



\$699,900

ROYAL LEPAGE

**GRACIOUS STONE MANOR ON 5 ACRES!** Nestled private and secluded on beautifully wooded lot with stream & circular drive. 4,300 sq. ft. Architecturally designed 2 storey features the traditional center hall. Lrg. principal rooms, high ceilings, hardwood flrs. doors & trim. Separate maids quarters. etc.

**ROYAL LEPAGE REAL ESTATES SERVICES LTD.**  
INGE WINTHER 878-8101



\$339,000

ROYAL LEPAGE

**TOP OF THE ESCARPMENT** - Beautiful 2 1/4 acre lot with a view and a 2-storey home with 4 bdms., 3 baths, main floor sunken family room, dbl. garage. For appointment contact.

**ROYAL LEPAGE REAL ESTATES SERVICES LTD.**  
A. LEAR-COSTIGAN 878-8101



\$349,900

RE/MAX

**CUSTOM BUILT** - Bavarian style 3+1 bedroom home on 10 acres situated on Hwy 25, 12 km north of 401. Large 2 car garage. REDUCED. V.T.B. Second Mbrtgage.

**RE/MAX MILTOWNE REALTY CORP.**  
LLOYD MOORE 878-7777



\$189,900

RE/MAX

**BUNGALOW WITH POOL** - Large, Bronte Meadows area, 3 bdrm. bungalow. Features main floor laundry room, rec. room with fireplace, double garage, central air, inground oval pool, deck and more.

**RE/MAX MILTOWNE REALTY CORP.**  
STEVEN J. PORTER 878-7777



\$289,000

REALTY WORLD

**IN A CLASS BY ITSELF!** - Cape Cod nestled on beautiful 1 acre. wooded lot. Features sep. living & dining rms. Centre hall plan, 3 baths, m.f. fam. rm. with w/o to deck & pool area, cent. air & vac. & much more.

**REALTY WORLD W.J. McCRUDDEN REAL ESTATE**  
HELEN HARDY 876-1133



\$299,900

ADVANTAGE PLUS

**TIMBERLEA EXECUTIVE**, perennials galore, 2 ponds, solarium, inground pool, ravine lot, & too much more to mention here.

**ADVANTAGE PLUS REALTY INC.**  
CHRIS NEWELL 878-4444