

# MVA public meetings will be held in September

Some Halton taxpayers may want to circle Thursday, Sept. 30 on their calendars in red ink.

That's the day Halton regional council will convene at a special meeting to consider the citizens' committee on property tax reform's final report regarding controversial region-wide market value assessment (MVA).

The committee has examined the MVA question in the wake of last December's marathon public meeting, at which regional council voted to delay implementation of MVA until 1994.

In what may be an attempt to defuse some of the anticipated public outcry on Sept. 30, public meetings have been scheduled in each of Halton's municipalities to examine the citizen's committee's final report, which will be released Sept. 1.

The proceedings will kick off with a public meeting in Oakville, which would see its taxes increased by \$4 million under region-wide MVA. It will be held Sept. 8, at 7 p.m., at the Halton regional headquarters auditorium.

That will be followed by a similar gathering in Burlington, which

would see its taxes decrease by an amount roughly equivalent to Oakville's increase under region-wide MVA. The meeting will be held Sept. 9, at 7 p.m., at the Brant

Hills Community Centre. Halton Hills, which have a slight overall decrease in its taxes under region-wide MVA, will hold a public forum on Sept. 14, at 7 p.m., at the

town hall in Georgetown. Milton, which would see a \$400,000 tax decrease, will hold a meeting on Sept. 16, at 7 p.m., at the Town Hall.

## Kid and pony show at Ag. Museum

More than 50 riders, along with their ponies and horses, will take part in the third annual Kids, Ponies and Fun event at the Ontario Agricultural Museum on Sunday, Sept. 5. Held in conjunction with Touch 'n' Go Farms of Campbellville, the event will feature

riders from 6 to 18 years old competing in jumping and gymkhana divisions.†

Admission to the museum is \$4.50 for adults, \$2.25 for seniors and youths from 6 to 17 years of age, or \$10 per family.

# Ontario Nissan Dealers' 1993 Summer Clear-Out Sale.

\$22,495\*\*



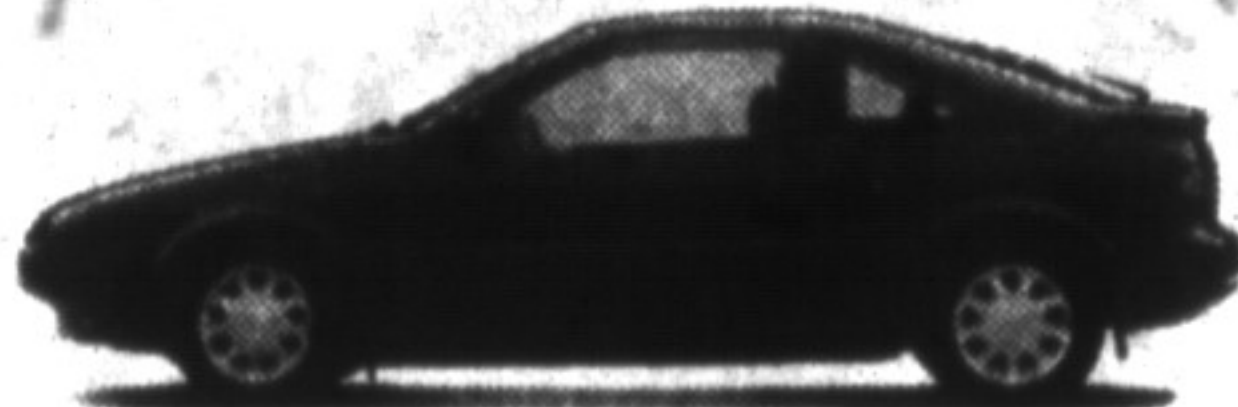
The '93 Maxima GXE Offers High Performance & Luxury At Our Lowest Clear-Out Price Ever.

- Standard V-6 engine with automatic transmission • Standard driver's-side airbag • Auto temp. control with air conditioning
- Keyless entry system with anti-theft alarm • Power windows & door locks



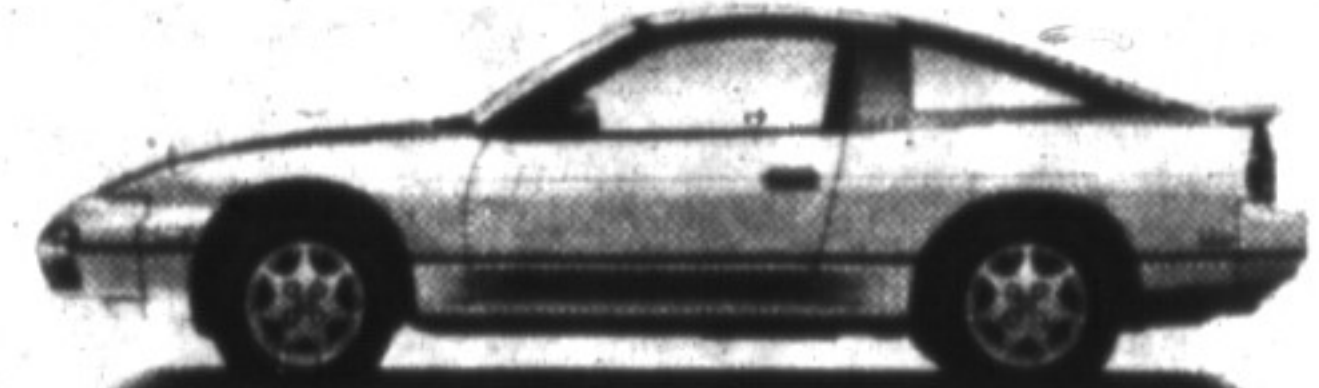
'93 Sentra Classic \$9,790\*\*

- Power steering • Tilt steering column
- Intermittent wipers • Velour cloth seat trim



'93 NX 1600 \$15,295\*\*

- 110-hp. 16-valve 1.6-litre engine • Standard driver's-side airbag • Front & rear stabilizer bars • T-bar roof



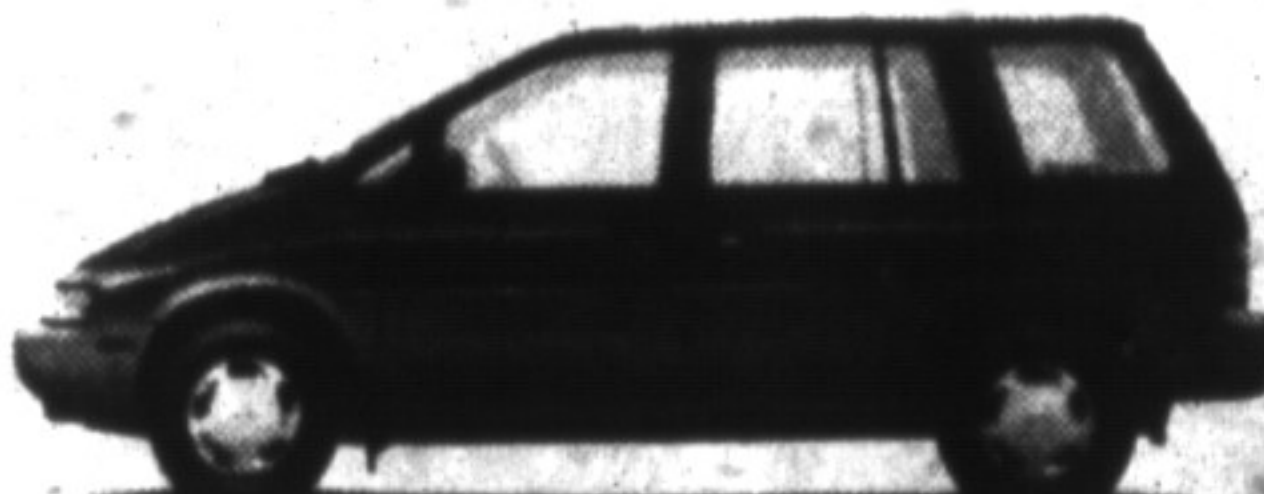
'93 240SX Fastback \$16,995\*\*

- 155-hp. 16-valve 2.4-litre engine • Viscous limited slip differential • Front and rear spoilers • Pop-up sunroof



'93 Sentra DLX \$12,995\*\* with no-charge air conditioning

- 110-hp. 16-valve 1.6-litre engine • Standard driver's-side airbag
- Power steering and dual mirrors • Child-proof door locks



'93 Axxess XE \$17,495\*\* with automatic transmission

- 138-hp. 2.4-litre engine • Power windows and door locks
- Standard AM/FM stereo cassette • Split folding rear benchseat



'93 Pathfinder XE \$23,995\*\* with power & sport pkg.

- Standard rear-wheel ABS with limited slip differential • Standard V-6 engine & air conditioning • Spare tire carrier • Power windows, door locks & heated mirrors



'93 Altima XE \$16,995\*\* with no-charge air conditioning

- 150-hp. 16-valve 2.4-litre engine • Standard driver's-side airbag • Super toe control.
- passive four-wheel steering • The best selling new car nameplate in North America\*\*

5.8%

Financing for 48 months on selected models\*



'93 Hardbody King Cab 4x2 \$12,495\*\*

- 134-hp. 2.4-litre engine • Fixed tie-down hooks • Standard AM/FM stereo cassette
- More horsepower, more torque and more fuel efficient than Toyota\* or Mazda\*

So Many Choices. So Little Time.



- 6 year/100,000 km Major Components Warranty • 6 year/100,000 km Emission Components Warranty
- 6 year Rust Perforation Coverage with unlimited kilometres • 3 year/80,000 km Bumper-to-bumper Warranty with no deductible
- 3 year/24-hour Roadside Assistance anywhere in Canada/Continental USA • 3 year Travel Planning Service

Your Ontario Nissan Dealers. Dealers You Can Live With.  
Call 1-800-387-0122 to find your nearest Nissan Dealer.



Smart people always read the fine print. And they always wear their seatbelts. Limited time offers. \*5.8% financing on all new 1993 Nissan Sentra DLX/XE/GXE, Altima, Maxima and Pathfinder excluding fleet units. O.A.C. Example: \$15,000 financed for 48 months at 5.8% A.P.R. is \$330.90/month. C.O.B. is \$1,843.28. All offers exclude freight, P.D.I. taxes and license. \*\*Specially priced 1993 Nissan vehicles: Maxima GXE (AA00), Sentra Classic 5-spd, Sentra DLX 5-spd, Altima XE 5-spd, NX 1600 7-Top (LA00) 5-spd, 240SX Fastback SE 5-spd, Axxess XE (AE00) 4-spd auto, King Cab DLX 4x2 5-spd, Pathfinder XE plus power and sport package 5-spd. See dealer for details. Dealers may sell for less. \*\*\*Based on competitive new nameplate sales data since introduction. †Toyota is a registered trademark of Toyota Canada Inc. Comparison based on '93 Xtra Cab 4x2 5-spd. ††Mazda is a registered trademark of Mazda Canada Inc. Comparison based on '93 B2200 Cab Plus 5-spd. 4 cylinders.