

**SUPERCHOICE**  
**Country Markets**

Fresh - Never Frozen, Family Pack  
**CHICKEN LEGS** 77¢ LB.  
 (part back attached) Freezer Filler - 10lb BAGS 69¢ lb.

Cut from Canada Grade 'A' Beef  
**THICK CUT INSIDE ROUND FAMILY STEAK** 2.99 LB.

From the Pork Loin Family Pack  
**PORK CHOPS** 1.99 LB.  
 Contains: 3 Rib Ends, 3 Centre Cut, 3 Tenderloin End Chops

Allen's  
**PURE APPLE JUICE** 97¢ 48 oz. Tin

R.C. COLA, Regular or Diet or  
**COTT BEVERAGES** 3.99 24 x 355 ml Cans

Weston's Enriched  
**100% WHOLE WHEAT BREAD** 79¢ 675 g Loaf

Red Rose  
**TEA BAGS** 3.99  
 Orange Pekoe - 144s

Prod. of Ontario, Canada No. 1 Grade  
**JUICY SWEET PEACHES** 2.79 Heaping 4 L Basket

Prod. of U.S.A., No. 1 Grade  
**JUICY NECTARINES** 69¢ LB.

Prod. of Canada  
**ROMAINE LETTUCE** 59¢ EA.

Prod. of U.S.A.  
**WHOLE WATERMELONS** 2.99 EA.

**SAVE \$\$\$ SAVE \$\$\$ SAVE**  
 REDEEMABLE ONLY AT SUPERCHOICE COUNTRY MARKETS  
**SAVE 75¢**  
 ON THE PURCHASE OF ONE 350 g BOX OF **QUAKER CAP'N CRUNCH** 1.49  
 OR ONE 480 g BOX OF **LIFE CEREAL**  
 with coupon  
 A. G. Nielsen, Coupon expires Sat. Aug. 28/93. Coupon Code 05319294. Limit one coupon per customer per purchase.

**575 ONTARIO ST. SOUTH**  
 (Corner of Derry Rd. & Highway 25)  
**HOURS:** MON. 9 AM - 8 PM WED. 9 AM - 9 PM FRI. 9 AM - 9 PM  
 TUES. 9 AM - 8 PM THURS. 9 AM - 9 PM SAT. 8 AM - 6 PM  
 SUNDAY 10 AM TO 5 PM  
 SPECIALS ARE IN EFFECT FROM TUES. AUG. 24 TO SAT. AUG. 28/93. WE RESERVE THE RIGHT TO LIMIT QUANTITIES.

**'She is in heaven', stepmother says of teen accident victim**

By **KAREN SMITH**  
*The Champion*

Anne Penney will be remembered by her big, bright smile, many of those who knew her have affirmed. "What everyone has been saying the last few days is that they're going to miss her smile," said her stepmother, Marlene Penney, who treated Anne like her own daughter. She also had a big heart, said her father Frank Penney.

The Milton woman, who was deaf, died August 13 when the car she was riding in crashed into the back of a transport truck on Highway 400, north of Simcoe County. She was 19.

Miss Penney was coming back from a camp for deaf people in Parry Sound, where she was a counsellor. Her smile was distinctively bright when working with the children, who responded to her enthusiastically, said Mr. Penney.

"Anything she tackled, she did it well," he commented in the living room of his Kingsleigh Court home Friday. "This year was an especially good year for her."



Anne Penney

The home was filled with dozens of flower arrangements sent by friends, many of whom Ms Penney made while attending the Ernest C. Drury School for the Deaf.

She first came to the Ontario Street school in January, 1987 and graduated June 25. Born in North Bay, she was captain of the swim team and also enjoyed playing volleyball and hockey.

Miss Penney planned to further

her education in the United States and eventually become a professional counsellor for deaf youth. She was likeable and eager to learn, said her father.

At the age of 15, recalled Mrs. Penney, she had job interviews at three different places and was hired at each one. She couldn't keep all three jobs, however, and chose to work at McDonald's.

But like everyone else, Miss Penney wasn't perfect, noted her brother David, 28, of Toronto. She was strong-willed, with a temper, and always had to have the last word, he said.

Miss Penney was an ardent advocate for the rights of deaf people, David continued. He taught her how deaf people are often mistreated by the hearing due to ignorance.

She's also survived by three other brothers, Ron, 31, Paul, 29, and John, 22, who all looked out for her.

For three years, Miss Penney lived in Milton with deaf couple John and Sylvia Bell to immerse herself in the deaf culture, where she, in her late teens, felt more comfortable.

• see VICTIM on page 10



**Fat Freddy's**

**WEDNESDAY**

2 for 1  
**PASTA SPECIALS LUNCH & DINNER**

**THURSDAY**

COME LISTEN TO OUR **DJ**

**FRIDAY**

**MUSCULAR DYSTROPHY Karaoke COMPETITION**  
 Best singers can win a trip to EPCOT CENTRE

**SATURDAY**

**Live Band! "BAREFOOT"**

370 Main St. E., Milton

878-2889

WATCH FOR OUR BACK TO SCHOOL SEPTEMBER SPECIALS!

2 for 1 WINGS

Monday to Friday 4 to 8  
 Saturday & Sunday 12 to 6

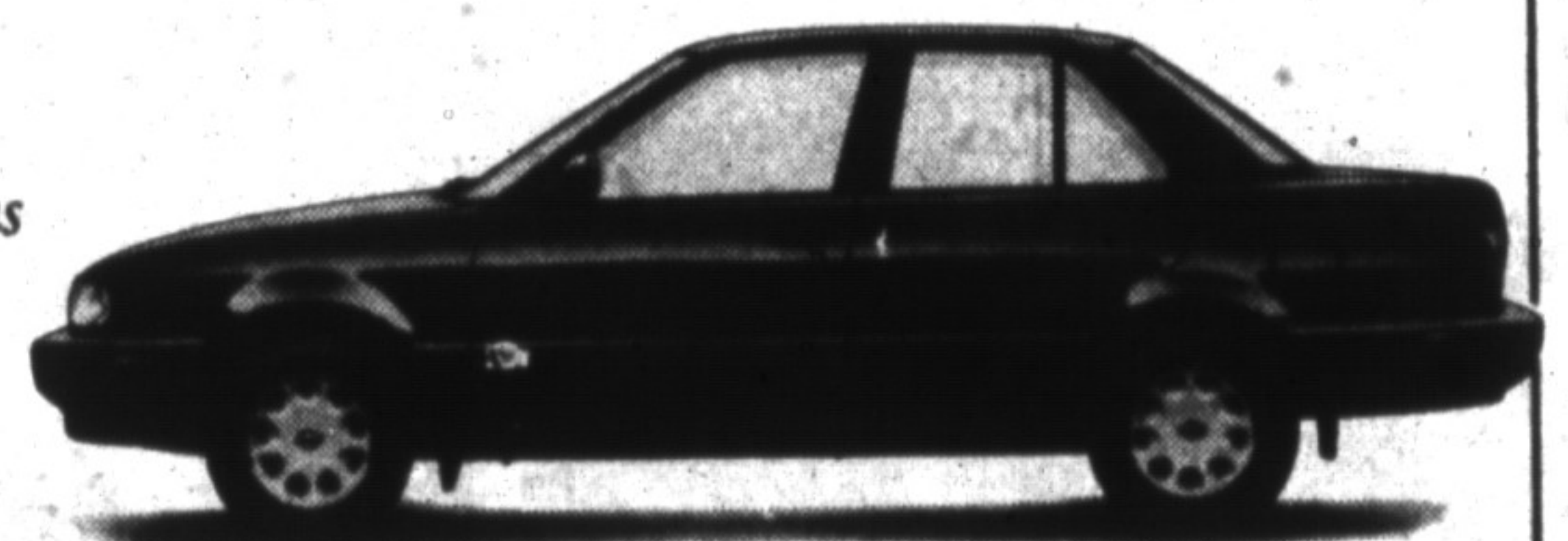
**Nissan 1993 Clear-Out Sale.**

Great Cars, Unbeatable Value, Best Warranty.

**5.8%**

Financing for 48 months on selected models

DLX, XE AIR BAG MODELS + NO CHARGE AIR



Call our friendly sales staff for details.

\$100 FUEL TAX REBATE ON ALL STD TRANS MODELS .51 M.P.G. HWY.

Serving Milton and Area for over **31 years**



• 6 year/100,000 km Major Components Warranty • 6 year/100,000 km Emission Components Warranty  
 • 6 year Rust Perforation Coverage with unlimited kilometres • 3 year/80,000 km Bumper-to-bumper Warranty with no deductible  
 • 3 year/24-Hour Roadside Assistance anywhere in Canada/Continental USA • 3 year Travel Planning Service

Smart people always read the fine print. And they always wear their seatbelts. Limited time offers. \*5.8% financing on all new 1993 Nissan Sedan DLX/XE/GXE, Altima, Maxima and Pathfinder excluding fleet units. O.A.C. Example: \$15,000 financed for 48 months at 5.8% APR is \$350.90/month. C.O.B. is \$1,843.28. All offers exclude freight, P.D.I. taxes and license.

**NORTH END NISSAN**

610 Martin St. Martin

878-4137