

# Gardening can be source of satisfaction

• from GETTING on page 2

should be given adequate room to grow.

If you're planning to create brand new flowerbeds this year, it's also important to take your family activities into consideration.

For example, fragile flowers should not be placed right next to Fido's dog run or your children's outdoor play equipment, because there's a good chance they'll get trampled.

Also consider access and the size and shape of your garden, along with any unusual characteristics that you want to highlight (like a rockery) or camouflage (like a neighbour's unsightly garage, or a derelict potting shed).

Keep in mind that there are many relatively easy and effective methods of screening your view and changing the focal point of your yard.

For specific tips on how to create a haven of privacy and peace, consult a landscape or gardening expert.

## Sketches & Colour

If you're artistically inclined — and even if you're not — you may want to do a few thumbnail sketches of your plans to see how they stack up on paper. If you're aiming to achieve a special effect with colour, it's a particularly good idea to sit down with some colouring pencils first to see what the outcome will be; that way you'll avoid any unpleasant surprises halfway through the season.

And, if you're aiming to maintain colour from spring right through to autumn, consider planting a number of perennials which bloom in the fall, like chrysanthemums.

## Breaking Ground

Once you've formulated your plan, it's time to start preparing the soil for planting. Walk around your property and check the condition of your garden or flowerbeds. Damaged pieces will have to be removed, along with any-winter debris.

Turn the soil over so that it's aerated. Large clumps of earth should be broken up and smoothed out. You'll probably also need to add some soil amendments.

Once your soil is adequately prepared, and climate conditions are favorable, it's time to plant. Don't forget that once your plants take hold, it's important to keep them up. Ongoing maintenance is essential.

*This article is provided by local Realtors and the Ontario Real Estate Association (OREA) for the benefit of consumers in the real estate market.*

The Canadian Liver Foundation  
needs your help.  
Please be generous.



THE CANADIAN LIVER FOUNDATION  
1320 Yonge Street, Toronto, Ont. M4T 1X2

## 82 ACRE FOREST

- MAPLE TREES
- PINE TREES

Located 5 miles North of 401 near Milton town line. This is scenic rolling land that offers the ultimate in privacy for your country home. 2 lavish estates abutt the property. Miles of pretty paths and trails wind across the land. Price \$289,000. Terms

OWNER  
1-519-822-3406

MILTON

## Best Homes

A METROLAND PUBLICATION

IAN OLIVER

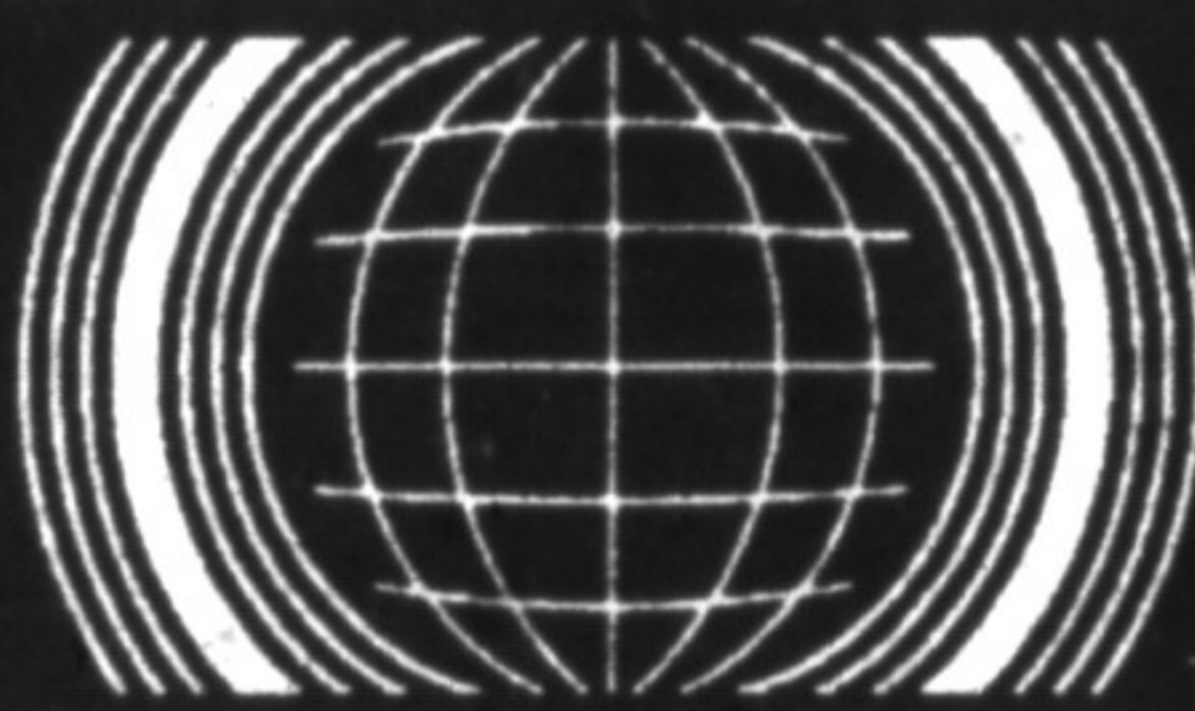
Publisher

Published by:

The Canadian Champion  
at 191 Main St. E.,  
Milton, Ontario L9T 4N9  
878-2341

Advertising: Neil Oliver (Manager)  
Real Estate Sales Rep: Andrea Boyle  
Who Does It: Sheena Cameron

Advertising is accepted on the condition that, in the event of a typographical error, that portion of the advertising space occupied by the erroneous item, together with a reasonable allowance for signature, will not be charged for, but the balance of the advertisement will be paid for at the applicable rate. The publisher reserves the right to categorize and reject advertising. In the event of typographical error, advertising goods or services at the wrong price, goods or services may not be sold. Advertising is merely an offer to sell and may be withdrawn at any time.



## REALTY WORLD

W.J. McCrudden Real Estate Inc.

500 Steeles Ave., Milton, Ontario L9T 3P7 & MILTON MALL

876-1133 24 HOUR ANSWERING SERVICE

Tor. Line 845-8888

REALTOR

Registered Real Estate Salesperson



### END UNIT AT EDGE OF PARK

Tastefully decorated 3 bedroom townhome offers main level family room with fireplace, main level laundry, finished basement, central vac., single car garage with door opener. Close to schools. \$133,900. Please call W.J. (Jack) McCrudden, Broker, to arrange to view #52.



### ITS APPEAL IS REAL

Executive brick home with lots of living space for the family. Elegant living and dining room, cozy family room with fireplace, 4 bedrooms, part finished basement. Must be seen! Now asking \$257,900. Call Gladys Cranford to view #32.



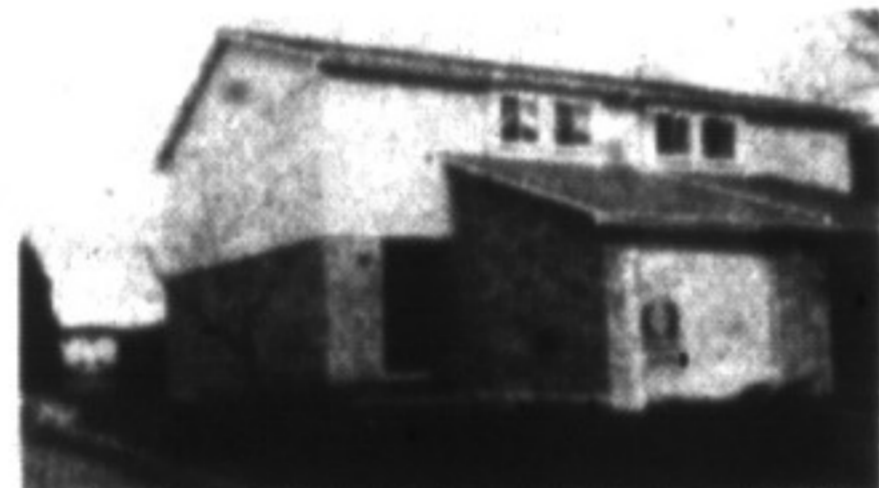
### BEAMED CATHEDRAL CEILINGS

Professional decoration, 4 bedrooms, 2 washrooms, fully finished basement! Come see this special home and fall in love - offered at \$179,900. Please call Barbara Mallaieu to view #54.



### IT'S WORTH THE DRIVE TO ACTON

Solid brick bungalow on 1/2 acre, close to all amenities, in a rural cluster of homes with large rec. room, workshop and a bedroom downstairs. Priced to sell at \$189,900. Call Jennie Fretz about #05.



### MRS. CLEAN LIVES HERE!

End unit townhome, nicely decorated and super clean. Backs onto park. Flexible closing. Don't miss this one! Offered at \$128,900. Call Barbara Mallaieu to arrange your appointment to view #22.



### NORTH-WEST OF ACTON

Spacious 4-bedroom, 3-bathroom home with main-floor family room and laundry room. Built with your family in mind. Located on 3/4 acre. Asking \$224,000. Call Lee Bunker about #55.



### PRICED TO SELL - \$219,900

A very deceivingly gorgeous 3+ bedroom side-split set on 0.35 acre country lot. Completely up-to-date throughout. Million-dollar view. Please call Helen Hardy to arrange your personal inspection #36.



### HERITAGE HOME

Set on 4.5 acres with a gorgeous view from atop a hill! Home has some original woodwork, newer wiring and add on family room, 3 outbuildings & 2 box stalls. Call W.J. (Jack) McCrudden, Broker, to view #93.



### FRESHLY DECORATED TOWNHOME

With finished basement, nicely located in complex, decorated in neutral tones throughout. Flexible closing. Offered at \$129,500. Call Barbara Mallaieu to view #39.



### CLOSE TO ALL AMENITIES

Immaculate 3 bedroom backsplit offers main floor family room with walk-out to deck, cozy rec. room with fireplace, central air, eat-in kitchen and more. Asking \$189,900. To view please call Jennie Fretz about #38.



### SPLIT LEVEL

3 bedroom offers custom built pine cupboards & brick accents in kitchen, floor-to-ceiling fireplace, electronic air cleaner, new gas furnace, brick fireplace on patio, completely fenced rear yard, circular drive & more. Call W.J. (Jack) McCrudden, Broker, to view #29.



### FULLY DETACHED HOME IN TOWN ONLY \$109,900! (#57)

CONTACT BILL CURRIE FOR COMPLETE DETAILS



### PICTURE-SQUE

Picture yourself walking among the trees waving to a gentle breeze and meandering round the pond watching the reflections dance. To view this 3-bedroom home & surrounding property, please ask for Stewart Haddon, Associate Broker, #01.



### EXCELLENT FAMILY HOME

Well suited for children - finished family room - close to schools - lovely fenced garden. This spacious home must be seen to be appreciated. Now asking \$189,000. Please call Arnie Hansenberg today for all the details about #24.



### 543 CLOVER PARK CRESCENT

2 Storey, 4 bedroom home offers main floor family room with fireplace, main floor laundry, central air, partially finished basement, concrete driveway & patio, fully fenced yard. \$239,900. Flexible closing. Call today to view #100 - Linda Erdly.



### IMMACULATE TOWNHOUSE

Three bedrooms, move-in condition, close to all amenities; numerous upgrades include vinyl flooring & decorating, broadloom like new & fresh paint throughout. \$132,000. To view #11 please call Grant Mitchell.



### SCENIC COUNTRY

This picturesque property offers a 2 storey home complete with separate workshop - office & 36' x 40' garage, all on approx. 1.1 acres with a pond. Located on the outskirts of Kildee and priced to sell, don't miss out! Call Don Pelz today about #111.



### SUMMER IS COMING, OH YES!

Be ready to cool off in the pool or in the luxury of an air-conditioned home. Watch the sunset on the escarpment and go star gazing on the balcony of the master bedroom. Asking \$229,900. For more details about this spacious sidesplit ask for Jennie Fretz, #93-14.



### IMMEDIATE POSSESSION

This three bedroom townhouse is in immaculate condition with upgrades. Finished basement. Vendor has already bought so call Dick Belford today to view #76.



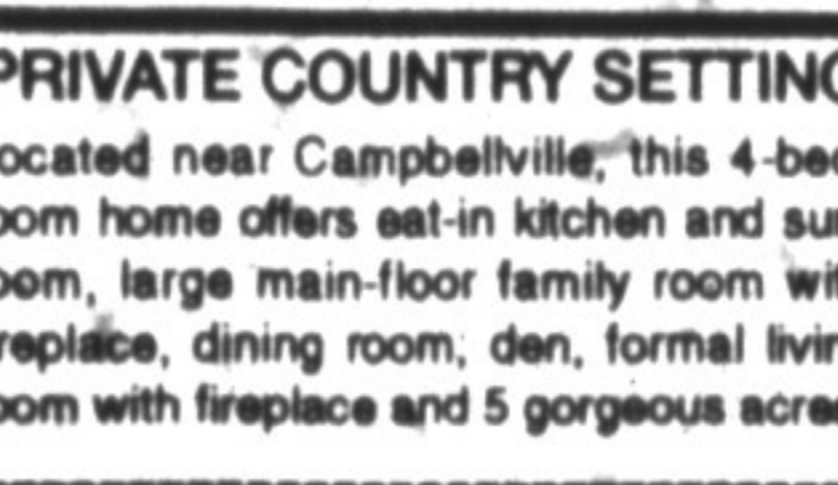
### CHECK THE PRICE! \$164,900 (#62)

FOR MORE DETAILS PLEASE ASK FOR BILL CURRIE



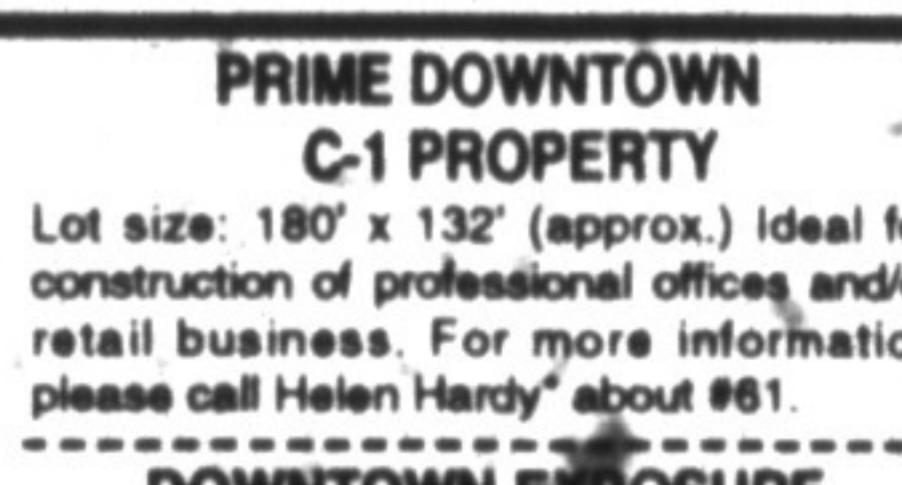
### POWER OF SALE

Guelph Line, Brookville: All brick 2 storey, 4 bedroom home with 2 car garage, above ground pool & large deck, situated on approximately 1 acre within walking distance to Brookville Public School. To view please call W.J. (Jack) McCrudden, Broker, about #31.



### PRIVATE COUNTRY SETTING

Located near Campbellville, this 4-bedroom home offers eat-in kitchen and sunroom, large main-floor family room with fireplace, dining room, den, formal living room with fireplace and 5 gorgeous acres.



### PRIME DOWNTOWN C-1 PROPERTY

Lot size: 180' x 132' (approx.) ideal for construction of professional offices and/or retail business. For more information please call Helen Hardy about #61.

### DOWNTOWN EXPOSURE

Store (with apartment above) for your own use or as a good investment. Vendor will consider taking back a mortgage of \$250,000 at 6% with an appropriate amount down. To obtain complete details call Stewart Haddon, Associate Broker about #92-14.



### TIMESHARE WEEK IN MARCH

Thornbury Harbour Club near Collingwood or trade for week in other area. Call Barbara Mallaieu today for details about this new concept #18.

### \$4.00/SQ.FT. - McGEACHIE DRIVE

16,800 SQ.FT. industrial space, Zoned M1 - light industrial. For complete details contact Sam Nadalin, Associate Broker or Ross Cescon about #104.

### INDUSTRIAL UNIT FOR SALE

Approx. 1,300 sq. ft., zoned M-1, available immediately, 14.5' ceiling height, good location with easy access to Hwy. 401. Call W.J. (Jack) McCrudden, Broker, to view #80.

To All Agents of North Halton

Exceed our Total Pledge Collection

by participating in the

3RD Annual Halton Hills Bike-A-Thon, Sunday, May 30, 1993

A Community Event in support of North Halton Association for the Developmentally Handicapped

CHALLENGE

