

# Hospital will benefit from 10-km road race on Sunday

Runners of all levels of ability are invited to join a 10-km race Sunday afternoon in conjunction with the Milton District Hospital Foundation's Hike for Health event.

Prizes will be awarded in several age groups for male and female participants as well as wheelchair divisions. The route is along First Line next to the hospital.

Top ranked wheelchair athlete Ryan Leworthy of Milton is a celebrity racer in the May

16 fund-raising event. He and organizing committee member Tina Braam varified the course distance Tuesday night. Leworthy's wheelchair and Braam's bicycle are each equipped with odometers.

The race course has been set up to ensure runners will not interfere with hospital operations, says Braam. First Line will be closed to traffic during the race and police officers will add to the safety precautions being taken.

Registration for the run starts at 12 noon Sunday. The race gets underway at 12:55 p.m. Entry fee is \$10.

Hike for Health also includes a 6 km and 4 km walk route that will take hikers through town. It begins and ends at the hospital. Walkers will have a chance to witness the start of the race before beginning their hike at 1 p.m.

Canadian world championship curling team

member Peter Corner will be the hike marshal. Corner is a member of Halton Regional Police Service and works out of Milton division.

Walk participants are welcome to obtain sponsors. Forms are available at the hospital and The Champion office.

Registration fee is \$10 per adult; \$5 per child and \$20 per family.

There will be numerous draw prizes, entertainment and a barbecue on hospital property.

# SPORTS

**Bruce Hood**  
MILTON  
**Travel**  
The Way To Go!  
878-2886



19—The Canadian Champion, Wednesday, May 12, 1993

THE CANADIAN CHAMPION

WEDNESDAY, MAY 12, 1993



## Toe to toe

Photo by GRAHAM PAINE

A Bishop Reding player (right) and a Milton District Mustang defender synchronize their kicks as the Reding player heads the ball in senior girls soccer action Monday afternoon at Milton District. The game ended in a 1-1 tie with Reding's Zsuzsa Fedacek and MDHS's Paula Ashby scoring the markers. The junior game played earlier ended in a 0-0 shutout.

## Junior Hanley drives for two opening wins

Junior Hanley is two-for-two in 1993 on the GM Goodwrench Tour, but it's becoming a bit harder for the defending Series Champion.

For most of last Sunday's Egglefield Ford Spring Green at Plattsburgh, New

York's Airborne International Raceway, Hanley ran second to Mopar driver, Ralph Nason, but a brake problem late in the race allowed the Ford driver to gain the advantage on the 80th circuit.

Hanley had earlier won the GM

Goodwrench Tour's season opener on April 18 at Maine's Oxford Plains Speedway. Also, he becomes the first driver to successfully repeat an Egglefield Ford Spring Green win. His other victory came in 1992.

## Rusty Red Sox lose opener 8-0 to Hamilton

By ROB KELLY  
The Champion

Even though the Milton HJM Insurance Red Sox got shelled 8-0 in their home opener against Hamilton Saturday, manager Glenn Turner is confident his senior baseball team will soon shake off the rust and rebound.

Turner sees Hamilton as one of the powerhouse teams in the two-division Central Ontario Baseball Association senior loop. "We expect them to be exceedingly difficult." It was not the starting point Turner would have wished for given the fact his team had little preseason tuning to shake off winter cobwebs.

"Our pitchers have not thrown in any exhibition games," Turner noted, the simple rationale being that Milton has not played any. The Red Sox roost is Brian Best Park, where, according to Turner, preseason game opportunities have been almost as rare as Maple Buds' playoff tickets.

"Too many other teams have to squeeze onto Brian Best Park," Turner said. "The high schools and the midgets are over there. It's a pretty booked up schedule."

Brian Best is gridlocked because the new Maplehurst diamond isn't ready to take the overflow yet, Turner said.

Town leisure services director Jennifer Reynolds said Monday night that as far as she knew nobody was upset with their access to Brian Best, although the Maplehurst diamond isn't operating at capacity so far. The reason is that lights haven't been installed, she explained. The contractor won't be able to get the light poles until the end of the month.

Whatever the setbacks, Turner's team is going to have to play into shape during games that count on the 27-date roster. Besides Hamilton, the longtime Milton skipper expects St. Catharines to be tough. "I hear they have a championship junior team moving up."

• see RED SOX on page 20

## Chlisczyk ranked sixth in province

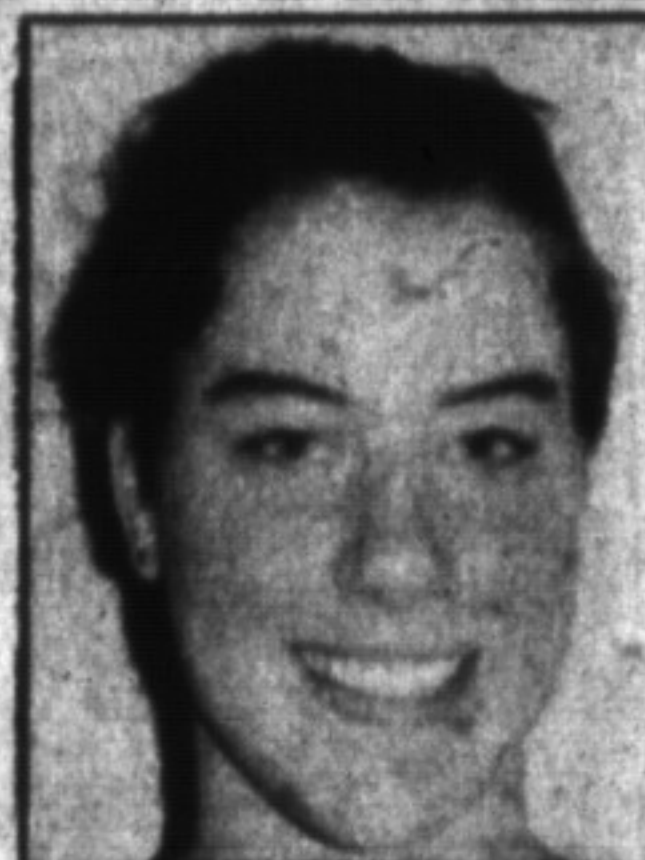
Local gymnast Vicki Chlisczyk was a member of the best team at the Provincial Championships '93 held recently.

Her sixth place finish helped the Central Region team to take first place in the competition. This was the Milton Springers' Gymnastics Club member's fifth consecutive appearance at the provincials, a new club record.

Chlisczyk put in her best performance ever and is now ranked sixth in the province at the senior two level balance beam. It was her first top six placing at the provincials.

To qualify for the regional team, Chlisczyk placed in the top six all-around at regional qualifying meets. That feat was even more challenging for Chlisczyk this year as an injury kept her from action at the first meet. Although the pressure was on, she managed to place sixth on the team.

Teammate Shawna Turner, also of the Springers, will compete for the first time at the Provincial Championships for her category in two weeks at Sault Ste. Marie.



Vicki Chlisczyk