

# RE/MAX

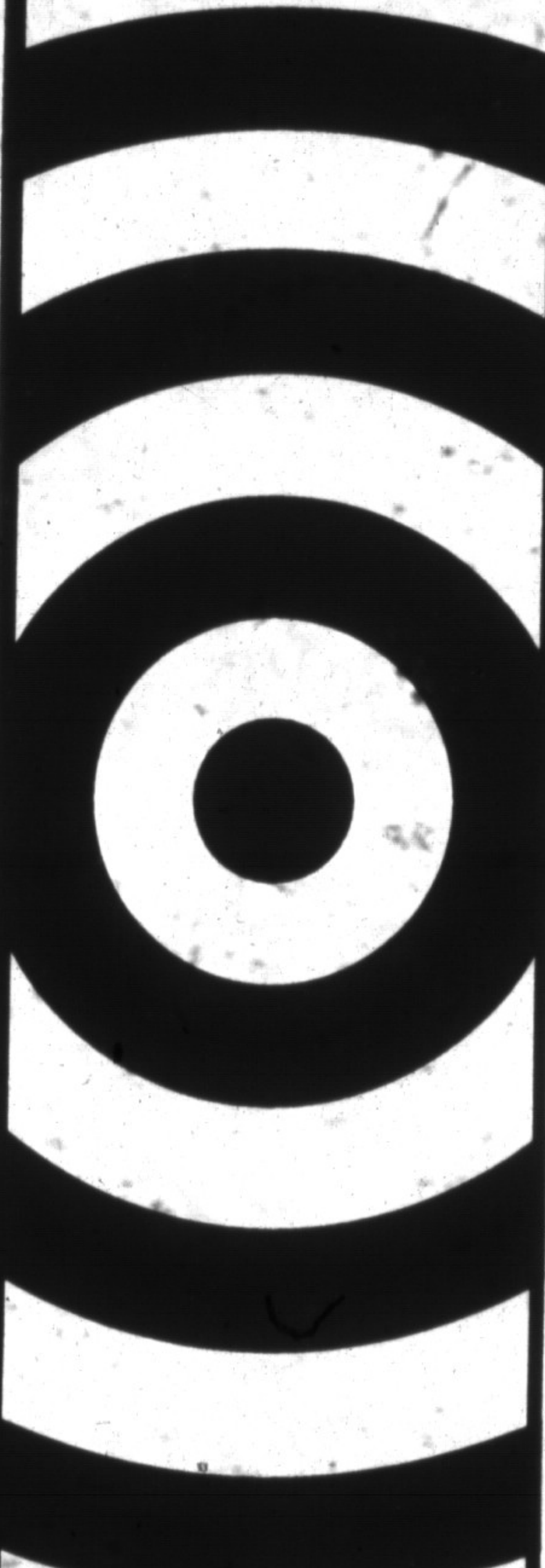
**Miltowne Realty Corp**

Sold more homes since 1983

22 Ontario St. South 878-7777

RE/MAX - The Canadian Champion, Wednesday, April 21, 1993

**BUYING OR SELLING  
SET YOUR SIGHTS ON US**



**CHRIS NEWELL**  
Sales Rep.  
878-0992

**AUDREY NEWELL**  
Associate Broker  
878-5339

**Selling Homes By  
"Ultimate  
Exposure"**

**AUDREY NEWELL**  
Associate Broker  
878-5339

**VACANT LAND**  
This 4.8 acre property is on a paved road at Moffat, \$169,900. Well gives plenty of potable water.

1.4 acres country subdivision lot on paved road, \$135,000. Contoured to give several excellent home sites. Just north of Campbellville.

**SECORD COURT**  
\$169,900  
4 bdrm., master ensuite, main floor family room with fireplace, finished basement, 2 1/2 baths, large fenced lot. Must be seen.

**BRIAR CRESCENT**  
\$169,900  
Super backsplit with family room and fireplace plus finished rec. room, dining room with patio doors to a deck straight onto a above ground pool - think of the hot summers we've been having!

**VALLEYVIEW CRES.**  
\$229,900  
2450 sq.ft., 2 storey, 4 bdrms, 2 1/2 baths, main floor family room with fireplace, main flr. laundry, unfinished basement. Extra, 60' x 150' lot.

**WOODWARD AVE.**  
\$169,900  
4 bedrooms, large kitchen, 1 1/2 baths, main floor family room with wood burning stove. Partially finished basement. Near schools, parks, etc.



**SHERYL GRAY**  
Sales Representative  
Business: 878-7777  
Residence: 875-1121  
24 hr. pager



Lovely 3+ bedroom Bungalow situated near High School, large lot, finished basement, Ask for Sheryl Gray.



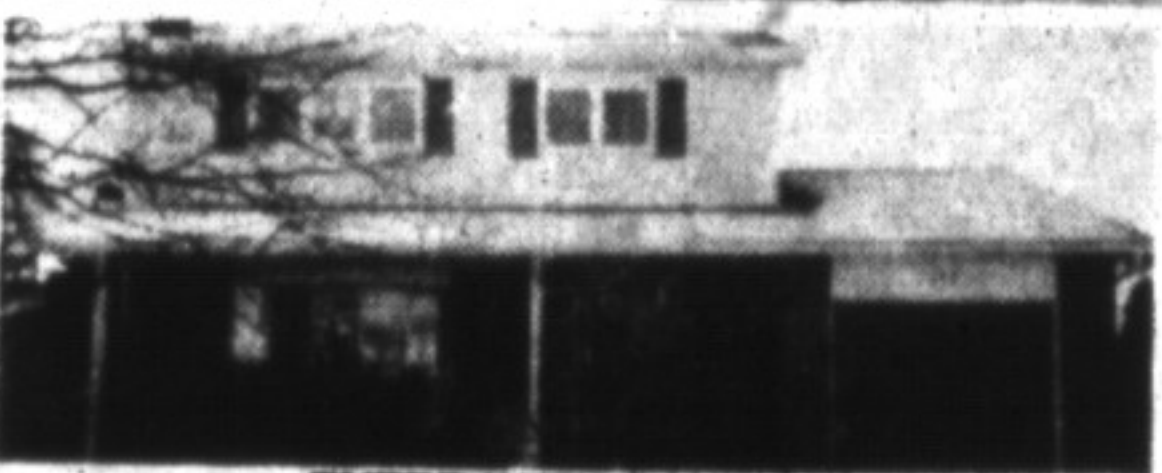
Laurier Townhouse - Many upgrades, peach & grey decor, upgraded broadloom, condo only \$155 includes cable. Ask for Sheryl 878-7777.



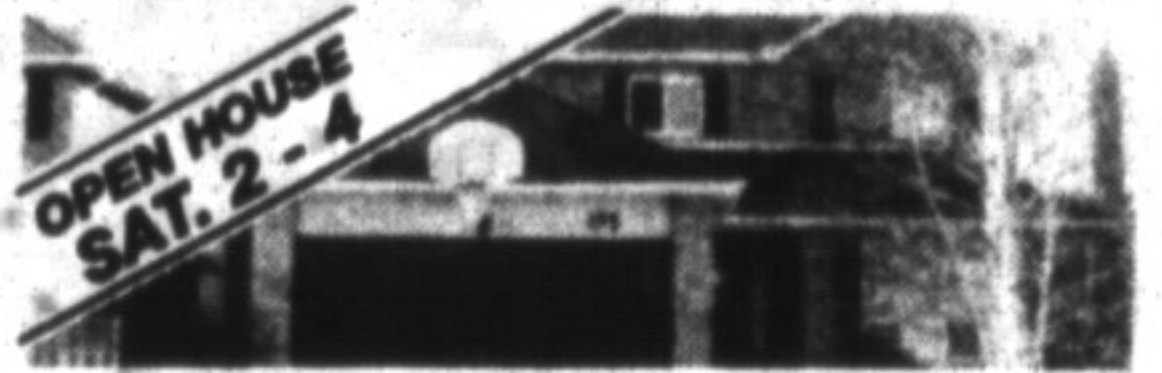
Beautiful upgraded Semi, central air, fireplace, finished bsmt, \$169,900. Call Sheryl 878-7777.

**BETTY INGLE**

Sales Rep  
878-7777  
Res. 827-4286



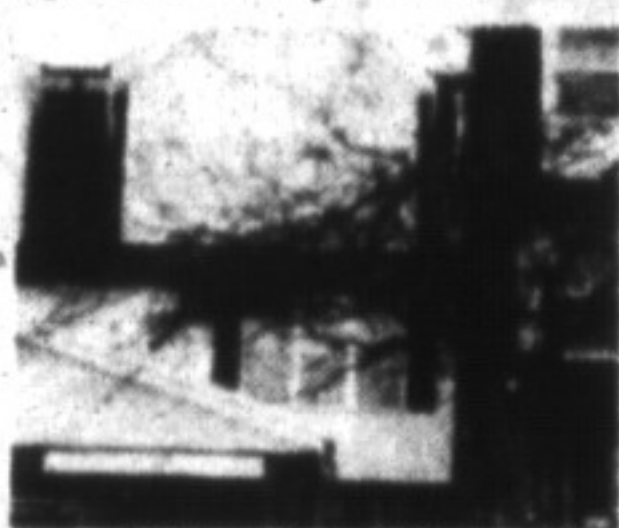
**ENTER WITH CAUTION!**  
You may just fall in love with this country-in-the-town home! 4 bedrooms, finished rec room with fireplace, ample, friendly kitchen, and large treed lot all beg for a young, active family. Close to schools and playgrounds, this home will be lonely without you!



**HAPPY DAYS ARE HERE AGAIN!**  
with lots of room for the active family. This 4 bedroom home demands to be seen. Everything the Cunninghams could want, including fully finished basement with wet bar, main floor family room with fireplace, walkout to deck and fenced yard, double car garage. Call Betty for an appointment and we'll tell the Fonz you're coming.



**EVER WONDER WHY THE SKY IS BLUE?**  
me too, but it doesn't really have anything to do with the fact that this house is amazing. Hard to believe this compact 3 bedroom bungalow has all the built-in amenities for the young couple or older family who can't be bothered with hidden defects or needed repairs. We don't know about the sky, but we know you'll be thrilled with this home!



**LOCATION - LOCATION - LOCATION**  
This lovely townhouse is ideally suited for the young family. For information call Betty: \$127,900.

One acre lot on Town Line - Glen Eden area. Priced to sell at \$139,900. Call Betty for more information 878-7777.



**CAROL M. BROOKS**  
Sales Representative  
Office: 878-7777  
Res: 875-0067  
Tor. Line: 825-4485



**304 STEELES AVE.**  
Cozy well maintained Bungalow, lovely hardwood floors, 3 bedrooms, eat-in size kitchen, pretty backyard. 169,000.



**133 HARVEST**  
4 Bedrooms, separate living & dining rooms, fireplace, piece ensuite, central air, finished rec room, fenced backyard. Priced to sell quickly, \$179,900.



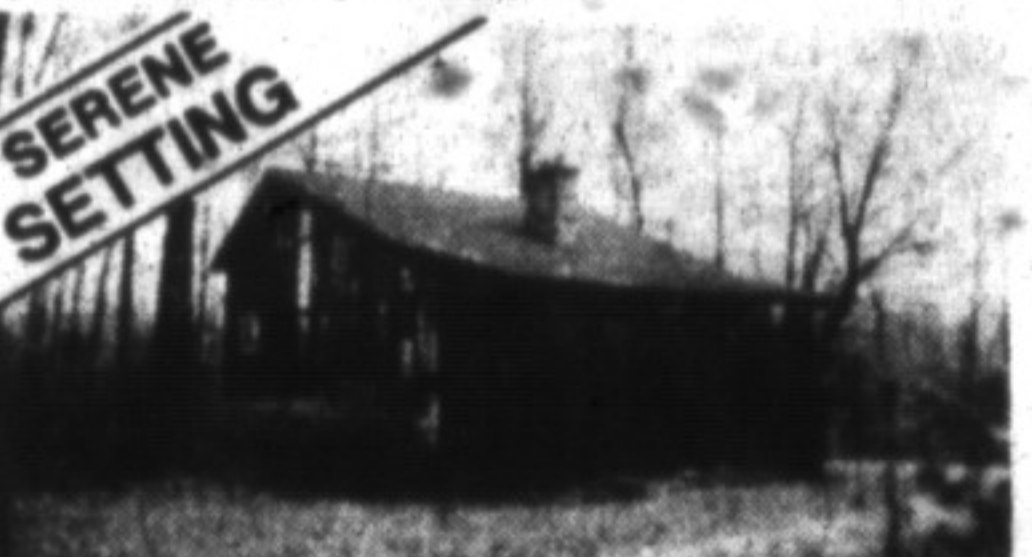
**CAMPBELLVILLE**  
Well known log house + flower shop addition. 4 bdrms. (master with F.P.), large inviting rooms, finished lower level. Location lends to many uses.



**CAROLE D. BUDWORTH**  
Sales Representative  
In Town and Rural  
OFFICE: 878-7777  
RES: 878-8545 FAX: 878-7029



In a prestigious estate subdivision just North of Rural Campbellville. Enjoy your new life in the country on 2 scenic acres with inground pool, great landscaping, decking, interlocking brick walkways and an executive Ranch Bungalow to go along with it. All at only \$399,900.



Convenient commuting but secluded on a 2+ acre piece of heaven just North of Milton. Chalet Style home, 2 fireplaces, 2 new baths, hardwood floors, wrap around floor to ceiling windows. You owe it to yourself to pack up all your clothes and shoes and head out & view this property. Call me and I'll tell you about the details.



Recent Upgrades make this executive family home show a "10". Located on a quiet court close to schools on a large well landscaped lot, with double car garage, newly paved drive and interlock brick walkway. New flooring, furnace, A/C, roof, siding and eaves and windows make this neutrally decorated home a move-in. No work dream. Call Carole D. Budworth for your private showing at \$229,900.



It was priced to sell at \$179,900 last weekend and the lucky buyer took advantage of a wonderful opportunity. Everyone was the winner in this case.



Wonderfully renovated older home on large mature lot with new kitchen, heated solarium, carpet, windows & doors. Call today or you'll miss out at \$164,900.



Never a better time, nor a better place to live better for less. This will be your new listing.

**PAUL PAGE**  
ASSOCIATE BROKER  
OFFICE 878-7777  
HOME 878-2995  
RE/MAX  
Miltowne Realty Corp.



**POWER OF SALE**

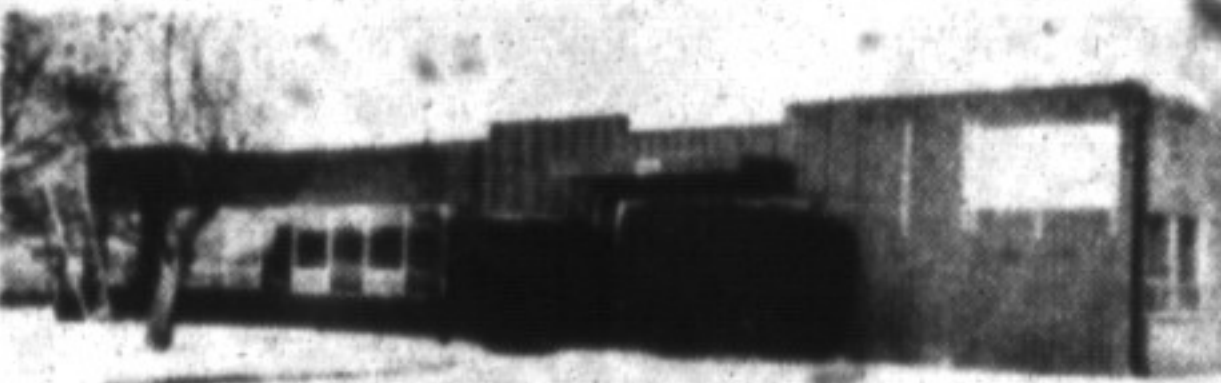
Country Estate with over 4,500 sq. ft. of living space design for your enjoyment with pool, sauna, jacuzzi, gazebo, vaulted ceilings, open concept, modern kitchen. For dollar value this is the best buy on the market today.

**REDUCED TO \$459,900**



**LANDLORD'S DREAM**

12% return on your investment. Located downtown Campbellville. 3 apartments plus a commercial unit. Good opportunity for the smart investor. Call Paul. Price \$279,900.



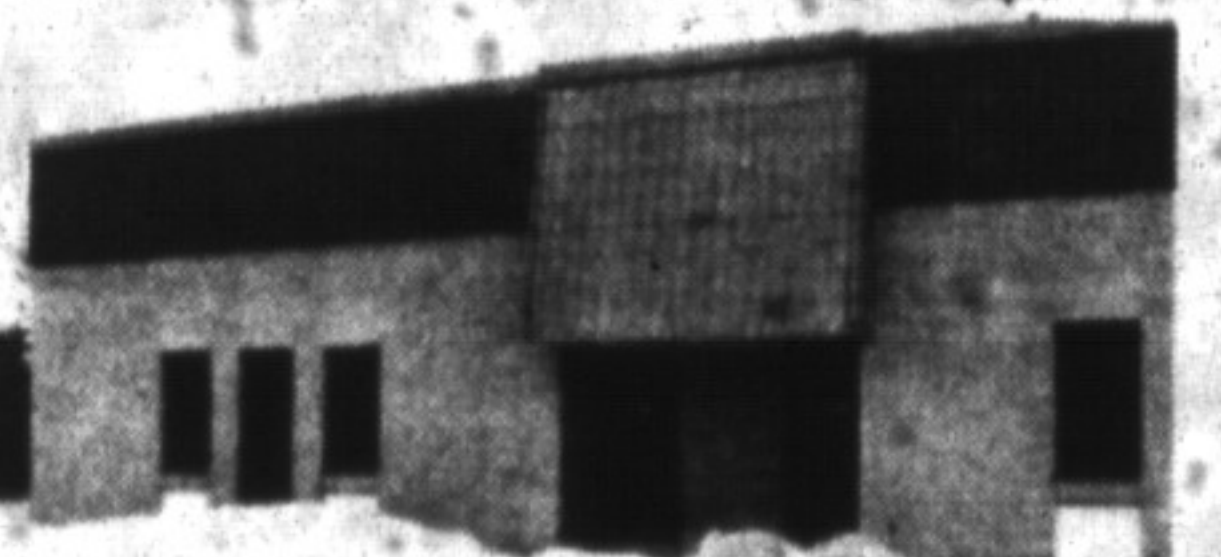
**OFFICE**

2,000 sq.ft. office, 2,000 sq.ft. storage. Office air-conditioned. For lease at \$2.95/sq.ft.



**PLAZA FOR SALE**

Good parking, high traffic. 4,450 total sq.ft. 3,000 sq.ft. leased. 1,450 vacant. For sale \$549,000. For Lease \$8.00 sq.ft.

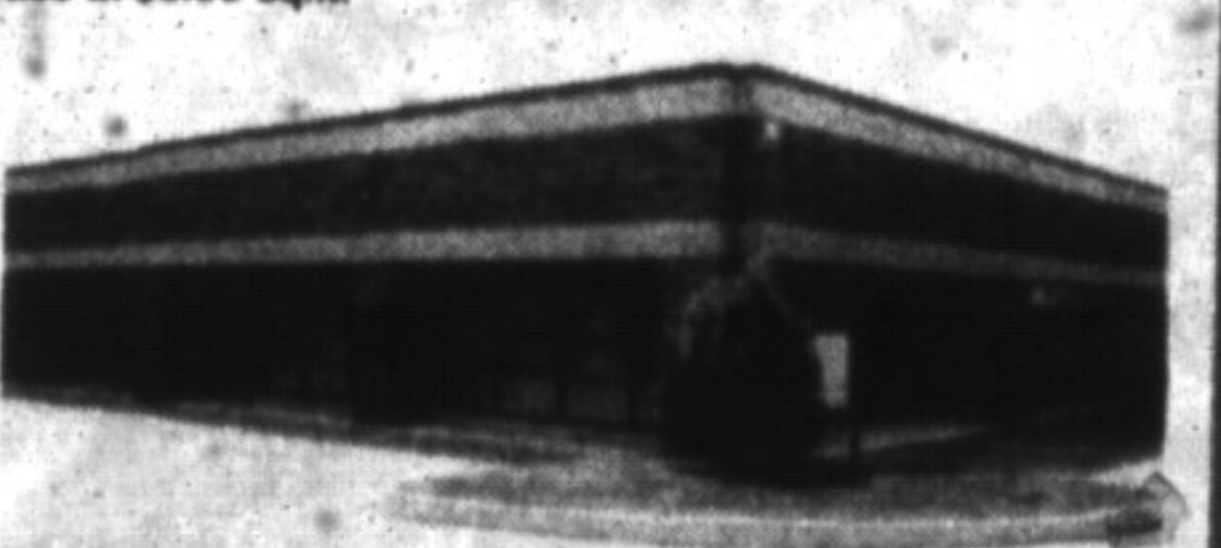


4,000 sq.ft. Loading and drive in. Ideal for automotive, light manufacturing and storage. For lease at \$3.50 sq.ft.



**MAIN STREET EXPOSURE**

Office, loading and drive-in doors. 6,000 and 2,000 sq.ft. For lease at \$3.50 sq.ft.



**1,564 to 3,128 sq.ft.**

Front exposure. Great showroom. Drive-in door, office, for lease \$3.50 / sq.ft.