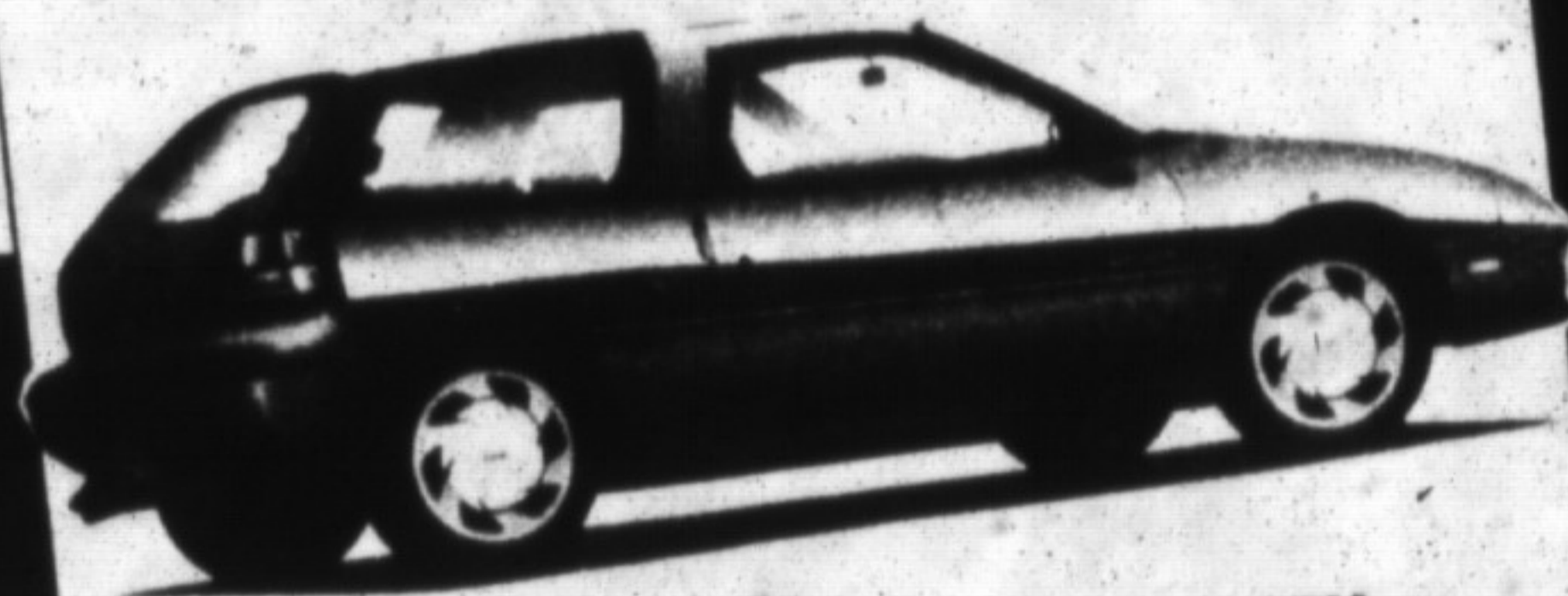


# GEO



- STORM 5 TO CHOOSE FROM
- TRACKER HARD TOP ONLY 1 LEFT!
- METRO LSI *Convertible* ONLY 1 LEFT!
- STORM GSI ONLY 1 LEFT!

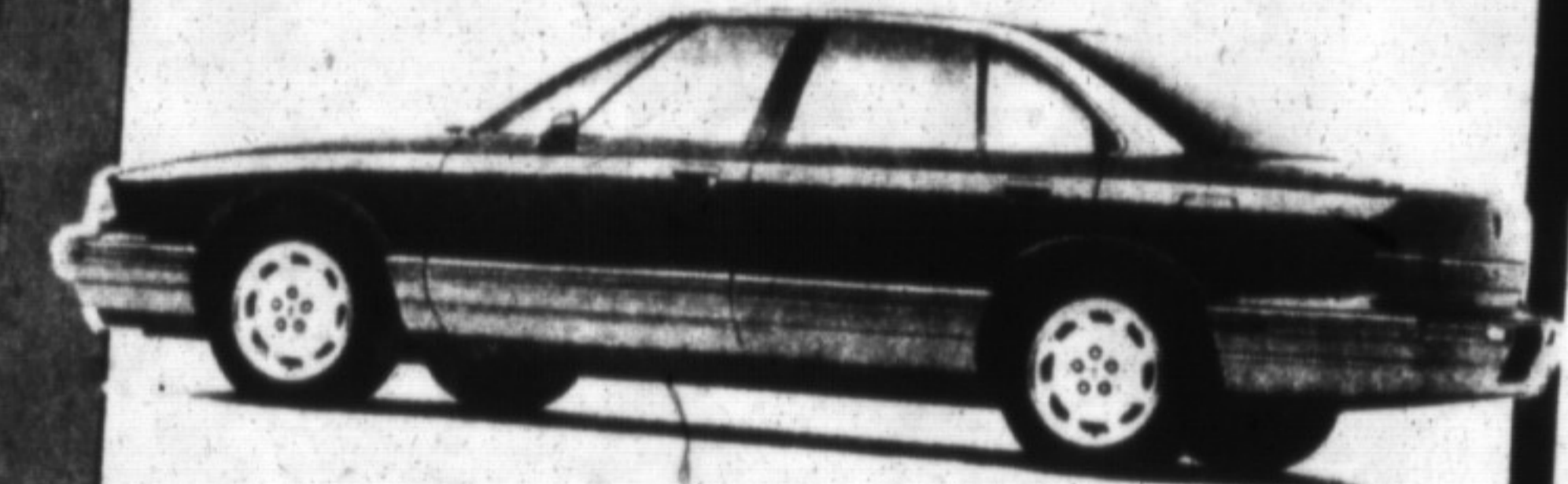
# Ninety Two's at...

# \$92 Over Invoice!

ALL REMAINING 1992 CARS & TRUCKS IN STOCK MUST GO BY THE END OF FEBRUARY. HERE'S YOUR CHANCE FOR THE GREATEST DEALS OF THE YEAR. HURRY MODELS & COLOURS ARE LIMITED!



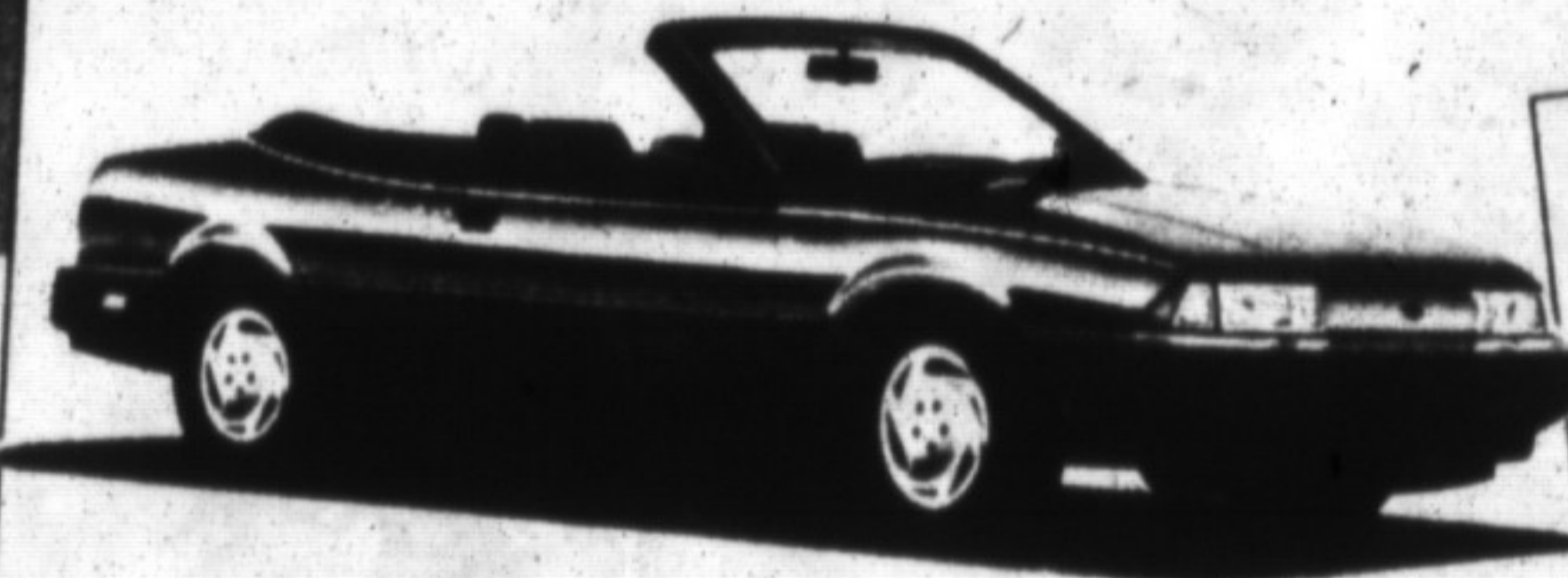
# Oldsmobile



- EIGHTY EIGHT'S 3 TO CHOOSE FROM
- CUTLASS *Convertible* ONLY 1 LEFT
- CUTLASS SUPREME 2 TO CHOOSE FROM
- ACHIEVA 5 TO CHOOSE FROM
- NINEYT EIGHT'S ONLY 1 LEFT



# CHEVROLET



- CAVALIER RS *Convertible* 2 TO CHOOSE FROM
- CAVALIER Z24 ONLY 1 LEFT
- CORSICA ONLY 1 LEFT
- LUMINA 7 TO CHOOSE FROM
- CAPRICE ONLY 1 LEFT



- ASTROS 2 TO CHOOSE FROM
- S10 BLAZERS 2 TO CHOOSE FROM
- S-10 EXTENDED CAB ONLY 1 LEFT



- 3/4-TON EXTENDED CAB ONLY 1 LEFT
- 1/2 TON REGULAR CABS 4 TO CHOOSE FROM

# Plus 3-1991'S

S-10 "BAJA" EXTENDED CAB  
4x4 "one of a kind" 13,000 kms.  
Stock # 1T125 Was \$22,636

Now...  
**\$17,495**

S-10 EXTENDED CAB  
"Ground Effects", 4x4 loaded.  
Stock # 1T88. Was \$20,848

Now...  
**\$16,995**  
freight & taxes

S-10 BLAZER  
4x4, 4 door, auto, 12,000 kms.  
Stock # 1T103. Was \$26,150

Now...  
**\$19,995**

**GMAC FINANCE** or **SMARTLEASE**  
at **1.9%** or up to **\$2,000** cash back

## No Games, No Gimmicks, Just Great Deals!

**LOOK OUT OAKVILLE!!**  
Coming Spring '93  
*The Next Generation* **CAMARO**

# TOWNE

CHEVROLET OLDSMOBILE GEO INC.

547 Trafalgar Road  
At The Q.E.W., Oakville  
**844-2320**



**LOOK OUT OAKVILLE!!**  
Coming Spring '93  
*The Next Generation* **CAMARO**