

The Canadian Champion

# Best Homes

MILTON, ONTARIO

878-2341

JANUARY 27, 1993



**\$174,900**

ROYAL LEPAGE

**WHAT YOU'VE BEEN WAITING FOR.** Immaculate 3 bdrm. home in Dorset Park. The list of improvements is extensive. Call me and I'll fill you in.

**ROYAL LEPAGE REAL ESTATE SERVICES LTD.**  
LAWRIE GIVEN 878-8101

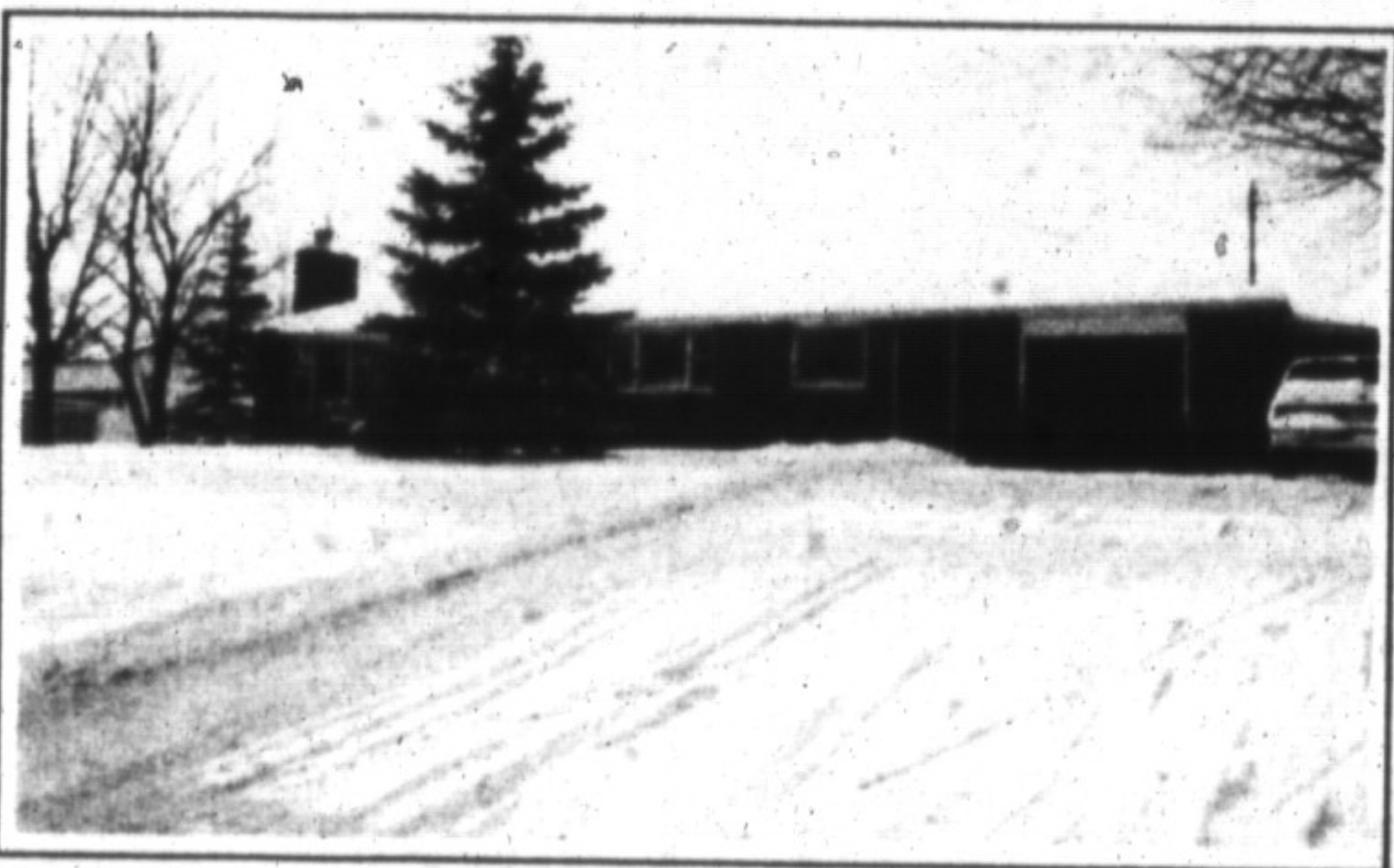


**\$699,000**

ROYAL LEPAGE

**PICTURESQUE SETTING.** Don't hesitate to come out and see this 4 bedroom country home on 47 ac. Excellent investment 2500 fruit trees, 3,000 Pines, hard bush, 3 mins. to 401 Hwy. & Trafalgar Road.

**ROYAL LEPAGE REAL ESTATE SERVICES LTD.**  
JOSEPHINE PERIC 878-8101

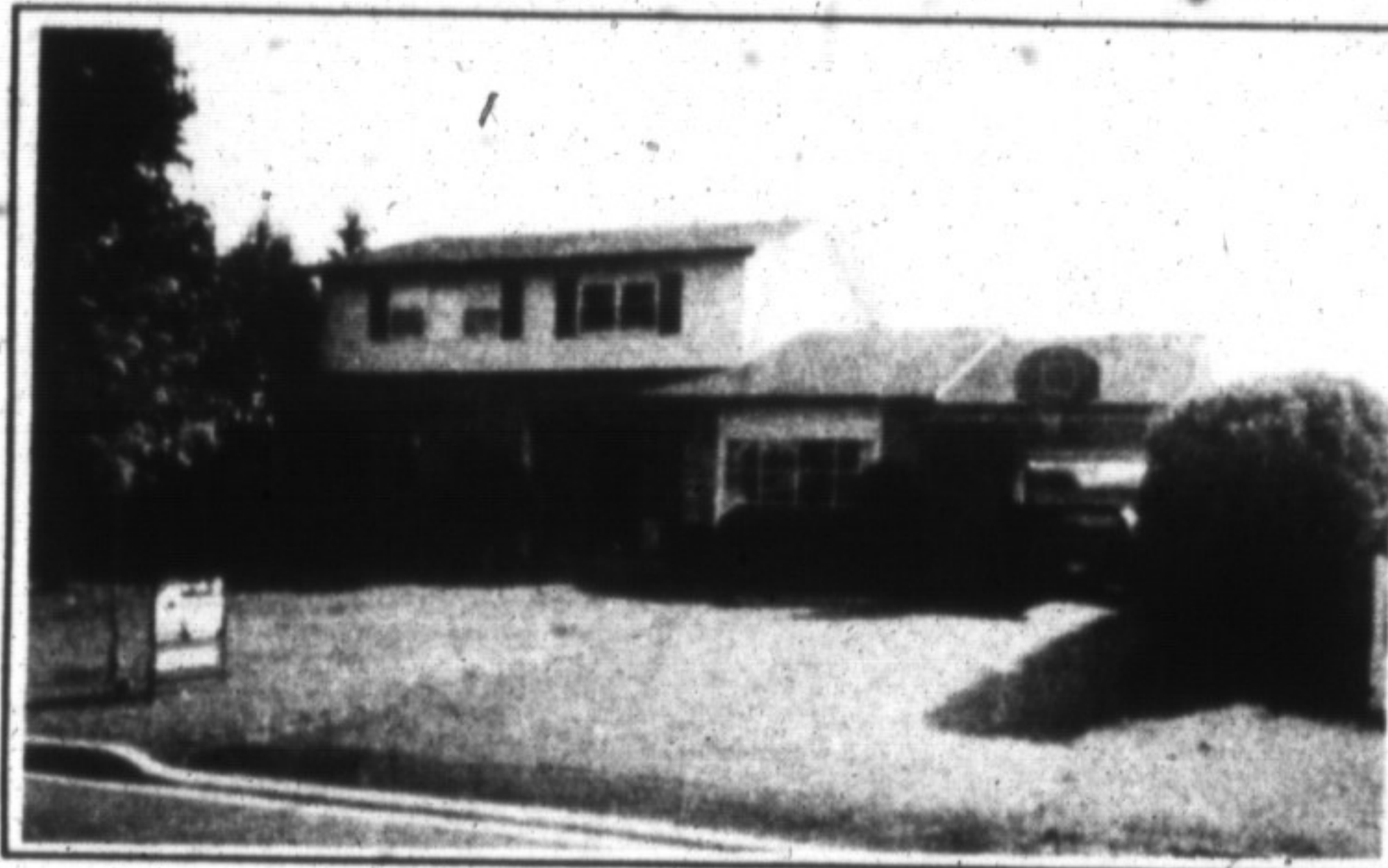


**\$189,900**

REALTY WORLD

**COUNTRY:** Solid brick bungalow, 10 mins. from the 401 on Hwy. 25. Located on a 125' x 175' lot, close to all amenities of the town of Acton. For more details or to arrange to view #5, please call:

**REALTY WORLD W. J. McCRUDDEN REAL ESTATE**  
JENNIE FRETZ 876-1133



**\$214,900**

RE/MAX

**FORGET THE WINTER BLAHS!** Think fun in the sun. 3 bedroom, 2-storey home featuring inground pool, change room, large private yard, central vac, huge master bedroom, drapes, blinds & dishwasher.

**RE/MAX MILTOWNE REALTY CORPORATION**  
JEAN SNOWDEN 878-2365

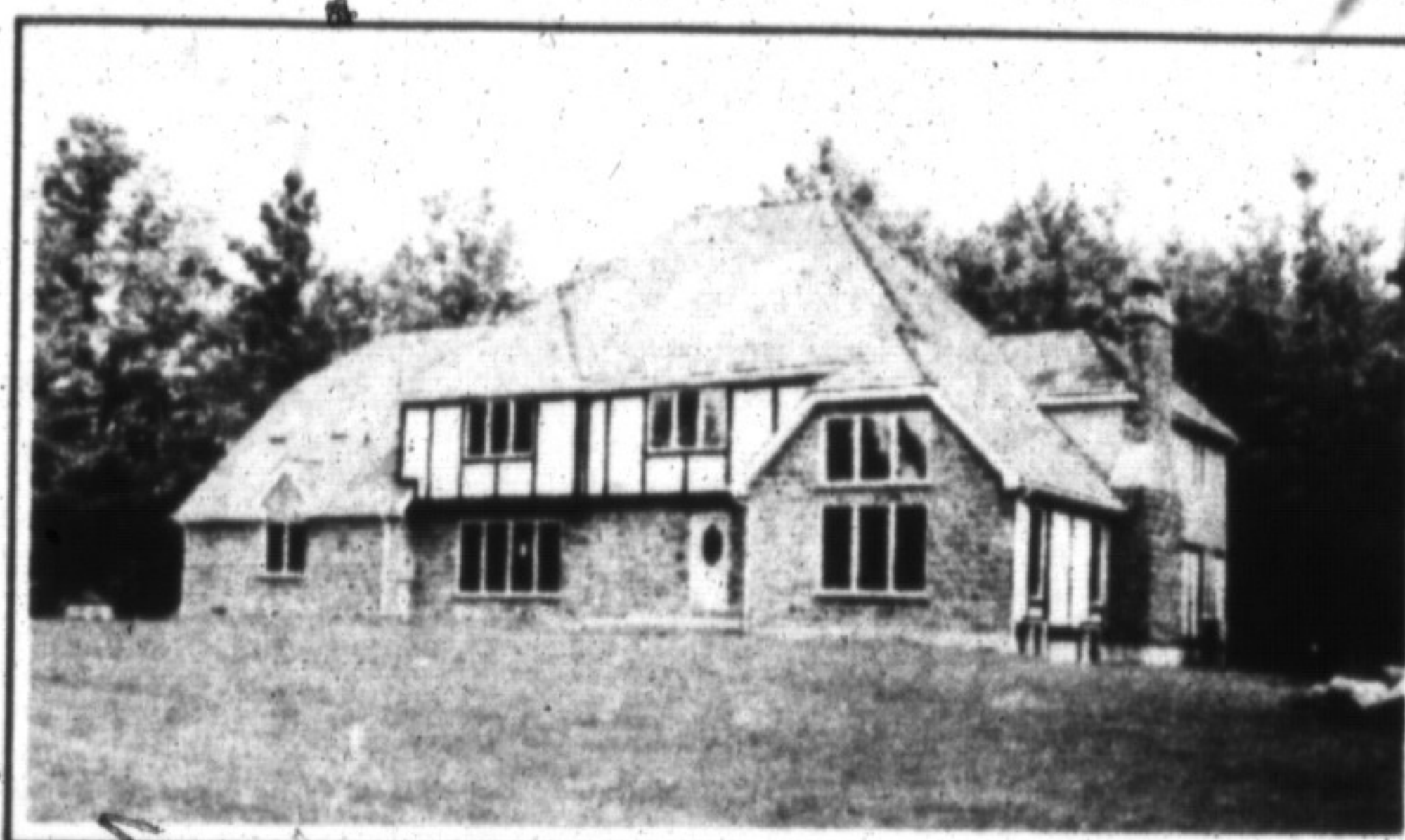


**\$179,900**

RE/MAX

**OPEN HOUSE SUNDAY JAN. 31, 1993, 353 WILLIAMS AVE.** 3 + 2 bdrms., brick construction, eat-in kitchen, sep. dining room, all hardwood, finished basement with wood stove, 20 x 20 above ground pool on a 63 x 145 lot.

**RE/MAX MILTOWNE REALTY CORP.**  
SHERYL GRAY 878-2365



**\$499,000**

Countrywide

**ENNISCLARE WOODS.** Privacy and spaciousness in a quiet exclusive setting. Take this opportunity to view an executive home now offered under Power of Sale. Four acres, ponds, large principal rooms, nanny or in-law quarters and loft.

**COUNTRYWIDE CAMPBELLVILLE REALTY INC.**  
SYLVIA BURSEY 875-2294