

The Canadian Champion

Best Homes



\$219,900

ROYAL LEPAGE 

GET AWAY FROM IT ALL. 4 Bdrm Bungalow on half an acre and only five minutes from the 401. Featuring an Eat-in Kitchen with lots of cupboards, F.P. in the L.R. & Mudroom between the house & 2 Car Garage. A rare find.

ROYAL LEPAGE REAL ESTATE SERVICES LTD.
BARBARA CROWE 878-8101



\$239,900

ROYAL LEPAGE 

THIS IS WHAT YOU HAVE BEEN LOOKING FOR. Your country home features Picture Window in Living Room with exquisite Fireplace. Tastefully decorated Kitchen has abundance of cabinets plus built-in Appliances. Dual ceramic tile Baths. Loaded with luxury convenience. For more information, please call

ROYAL LEPAGE REAL ESTATE SERVICES LTD.
HELEN HARDY 878-8101

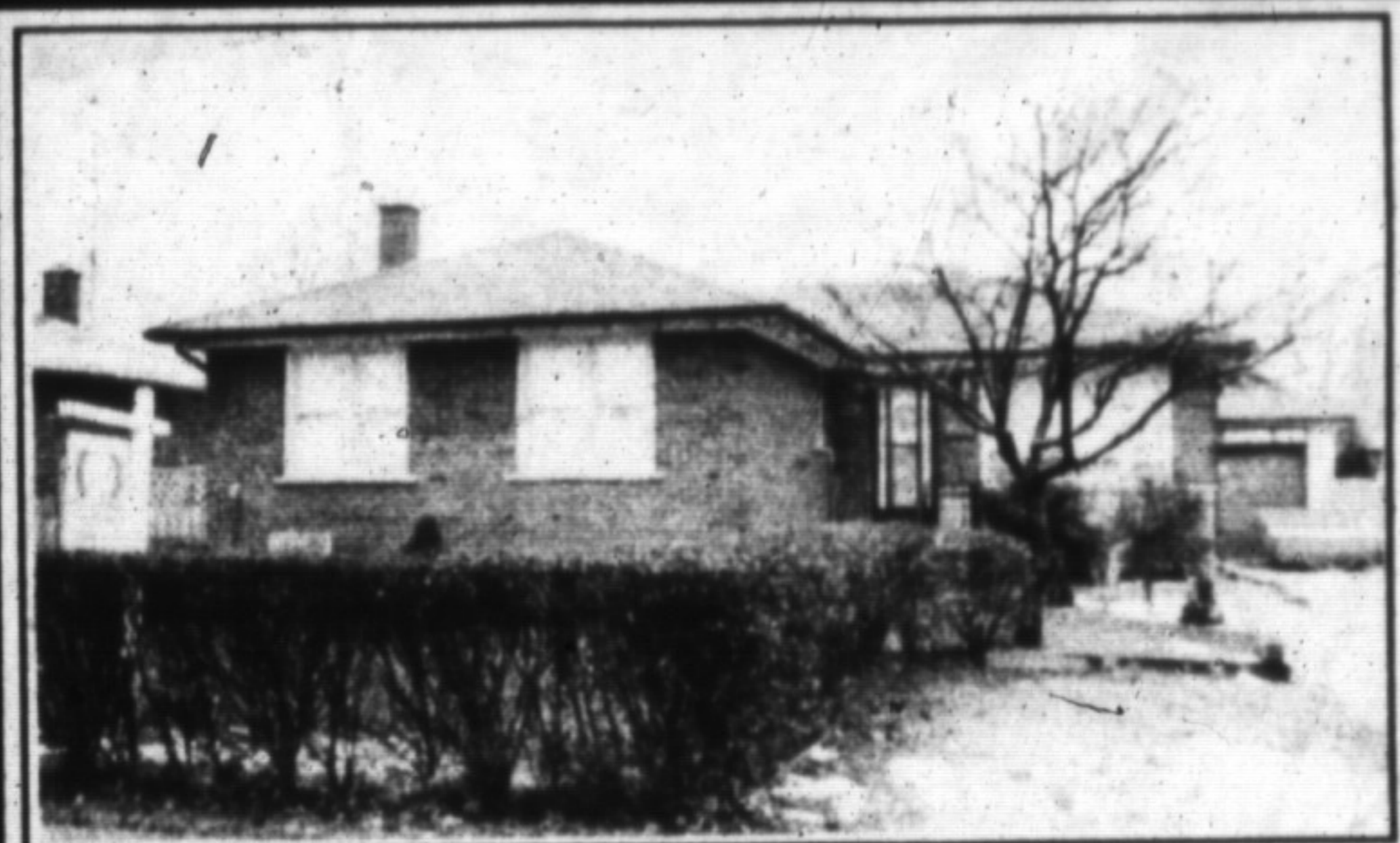


\$499,000

Countrywide

START THE NEW YEAR RIGHT!! Make an appt. today to see this traditional Brick home complete with 14 Acres, Pond, Stream, Trees, fenced field & Paddock & 9 Stall Barn. 2 Bed, 2 Bath, 3 yr old Mobile Home also on property. 3 mins. to Campbellville & 401. \$499,000.

COUNTRYWIDE CAMPBELLVILLE REALTY INC.
ISABELL HOSKINS 875-2294, 854-2294



\$179,900

REALTY WORLD

3 BEDROOM BUNGALOW with nicely finished basement suitable for an In-law Suite. Rec. Room with Wet Bar, Woodstove, Ceramic Tile to ceiling in Bath, Wine Cellar, 6' wood Fence & Greenhouse. Call for your appointment to view #115.

REALTY WORLD — W. J. MCCRUDDEN REAL ESTATE
JOAN TATTRIE-HOLLINGS 876-1133



\$164,900

RE/MAX

SUPER SEMI This semi features a family room on the main floor, a woodburning Fireplace in the Living Room, finished Rec. Room, large backyard and more.

RE/MAX MILTOWNE REALTY CORP.
SCOTT B. PRIOR 878-2365



Spring in the Country **RE/MAX**

2 Acre lot with large exec. Ranch Bungalow in Estate Subdivision. \$399,900.

RE/MAX MILTOWNE REALTY CORP.
CAROLE D. BUDWORTH 878-2365