

# YEAR END CLEAROUT

IT'S PRIME CUT TIME ON ALL REMAINING 1992's

**48 MONTH  
2.9%\*  
FINANCING**

**48 MONTH  
2.9%\*  
FINANCING**



'93 GMC FULL SIZE PICK-UP

Sierra Special Pkg., cloth seats, chrome front bumper, sliding rear window, tinted glass, rear step bumper, bed liner, ETR radio. Stk. # 1827.

**CASH PRICE**

**\$12,995\***



'92 SAFARI PASSENGER VAN

Loaded with air conditioning, power windows, & door locks, anti-lock brakes, AM/FM stereo cass., rally wheels, 8 passenger seating, roof racks, deluxe counsel. Stk. # 1512

**CASH PRICE**

**\$16,998\***



'93 SUNBIRD LE

2 door coupe, sport mirror, trunk release, AM/FM ETR stereo, anti-lock brakes, daytime running lights. Stk. # 1828

**CASH PRICE**

**\$9,826\***



'92 SKYLARK

Loaded with power windows & door locks, air conditioning, 3.3L V6 engine, alum. wheels, AM/FM stereo cassette, gauge pkg., remote lock opener, power seat. Stk. # 1317

**CASH PRICE**

**\$16,856\***



'92 SONOMA PICK-UP

Loaded with V-6 engine, high back bucket seats, AM/FM stereo cass., stripe pkg., sliding rear window, alum. wheels, H. D. Suspension. Stk. # 1260.

**CASH PRICE**

**\$12,995\***



'92 GRAND AM SE 4 DOOR

Air conditioning, V-6 engine, AM/FM stereo cass., anti-lock brakes, power windows, power door locks, alum. wheels, Eagle tires. Stk. # 1647

**CASH PRICE**

**\$15,486\***

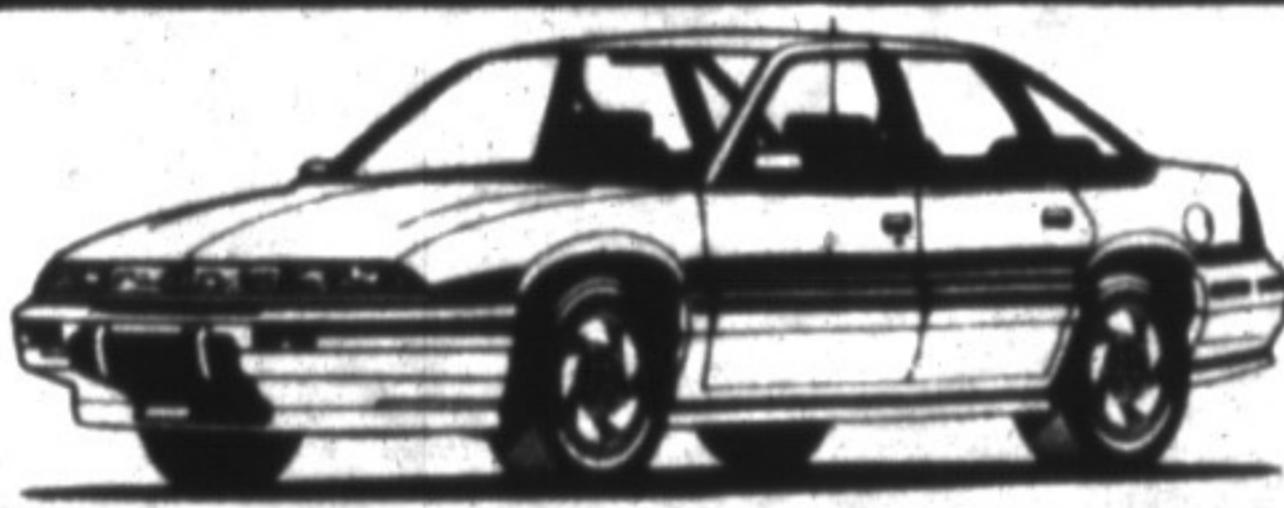


'92 BONNEVILLE LE

Air conditioning, 3.8 L V-6 engine, AM/FM stereo cass., deluxe gauge pkg., power windows, power door locks, auto O.D. trans. Stk. # 1699.

**CASH PRICE**

**\$17,888\***

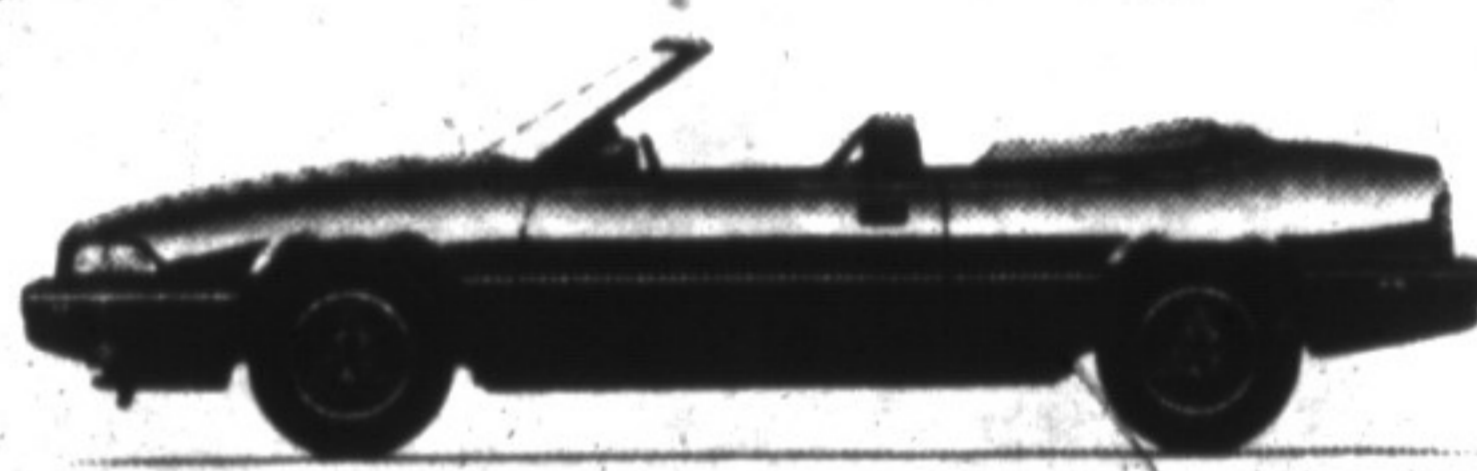


'92 GRAND PRIX LE

Air conditioning, power windows & locks, AM/FM stereo cass., automatic O.D. trans., cruise control, tilt steering wheel. Stk. # 1632

**CASH PRICE**

**\$14,995\***



'92 SUNBIRD CONVERTIBLE

V-6 engine, automatic trans., air conditioning, alum. wheels, rear wing spoiler, gauge package, AM/FM stereo cass. Stk. # 1616

**CASH PRICE**

**\$17,865\***



'92 REGAL LIMITED

Company demonstrator, 3.8 L V6 eng., anti-lock brakes, keyless entry, extended range sound sys., dual zone air cond., power windows & locks, front buckets w. counsel, alum. wheels. St. # 1467

**CASH PRICE**

**\$17,995\***



'93 SUNFIRE

AM/FM stereo cass., automatic trans., anti-lock brakes, Lotus handling pkg., front bucket seats, DOHC engine. Stk. # 1685

**CASH PRICE**

**\$12,888\***



'91 FIREFLY CONVERTIBLE

Pulse wipers, appearance pkg., AM/FM stereo, 5 spd. trans., cassette, folding convert. top. Stk. # 1070

**CASH PRICE**

**\$8,888\***

- NO GIMMICKS  
JUST ROCK BOTTOM PRICING
- ALL INVENTORY SALE  
PRICED FOR HASSLE FREE SHOPPING

- TOP VALUE FOR TRADES
- ONE WEEK ONLY

**HOURS:**  
Mon. - Wed.  
9:00 am - 9:00 pm  
Thurs. 9:00 am - 4:00 pm  
Sat. 9:00 am - 6:00 pm

\* 2.9% GMAC Financing 48 months O.A.C. Cannot be combined with Cash Back Price. 2.9% on 1992 Models Only. Freight and Taxes Extra. Offer Ends January 4, 1993. See Dealer for details.



# Wallace

PONTIAC • BUICK • CADILLAC

409 Main St. E.  
Milton  
878-2355