

# RE/MAX

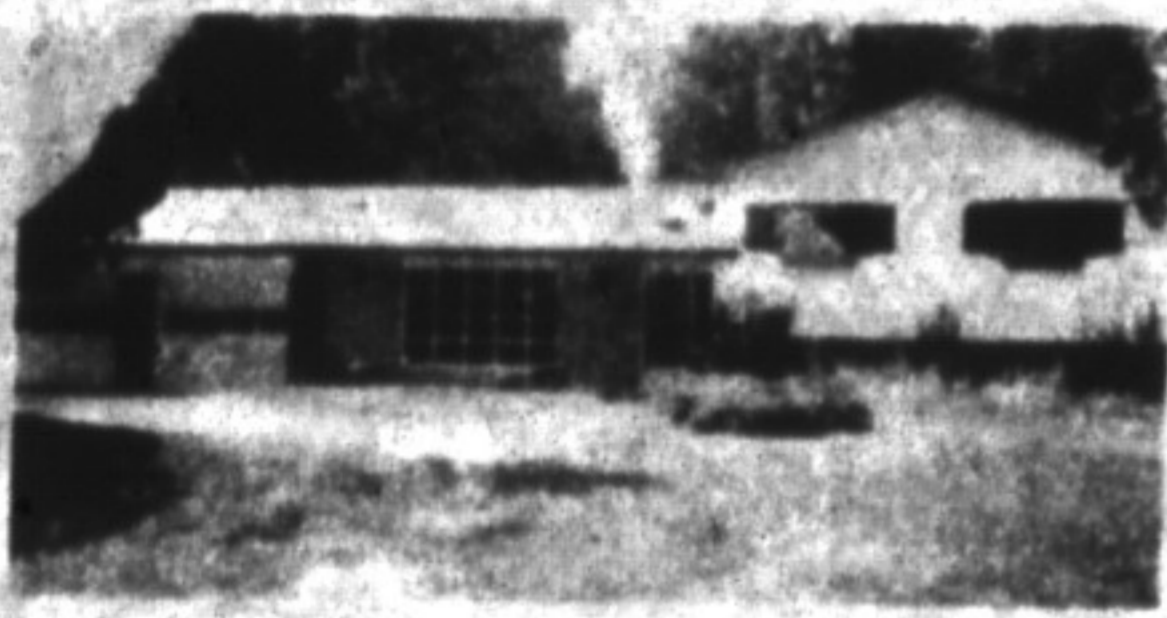
## Miltowne Realty Corp

Sold more homes since 1983  
22 Ontario St. South 878-2365

### RICHARD HIERMAN

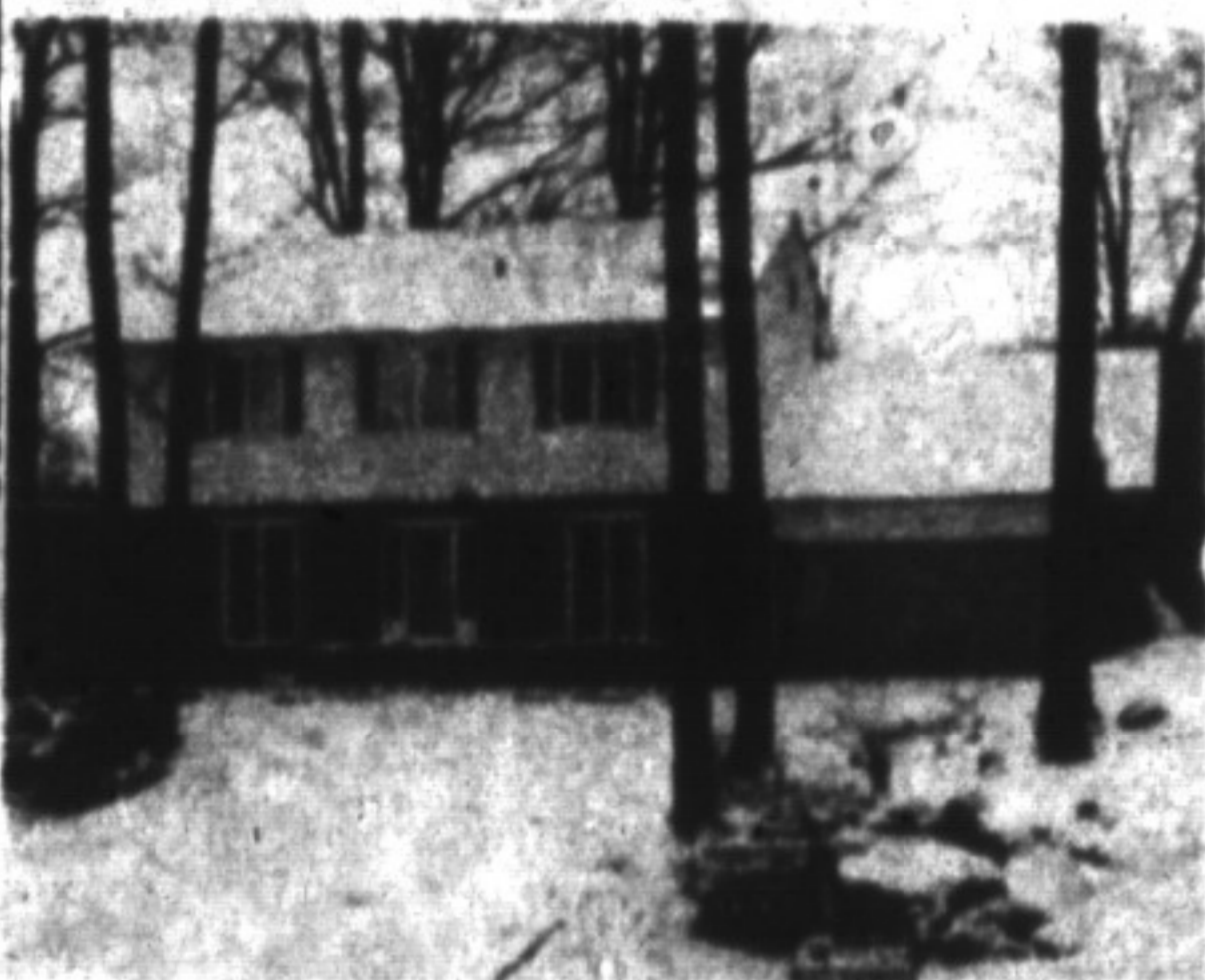
Sales Representative

Office 878-2365  
Toronto 826-1030  
Residence 878-5806



#### NATURE LOVERS DREAM

Wildlife abounds on this terrific 16 plus acres. There's even a pond - complete with beavers. Property also boasts Tennis Court and Pool. Home has 3 bedrooms, 2 bathrooms, upgraded broadloom, and hardwood floors and rec room with fireplace. \$319,000



#### COUNTRY FEELING TOWN CONVENIENCE

Beautiful 4 bedroom home nestled amongst mature hardwood trees on a large, private lot, yet still walking distance to shops. Lots of room for the whole family here. \$349,000



### HEATHER ASHBEE

Office: 878-2365  
Res: 854-0543  
Tel: 826-1030



#### POWER OF SALE

Fabulous N. Burlington Country Estate - 15 secluded Acres. Natural woods and rolling lawns. Upgraded thru, with oak hardwood floors - solid oak doors & trim. 3rd storey loft, Nanny Suite, and luxurious Ensuite with private sauna are just a few fine features. Asking \$749,900.

### KATRINA WALTON

Sales Representative

Office: 878-2365  
Res: 878-1588  
24 Hour Pager



#### SUPER MULTI-LEVEL TOWNHOUSE

3 bedrooms, 3 bathrooms, large eat-in kitchen, separate dining room, large living room with walkout to patio. Loaded with upgrades. This beauty is a must on your shopping list. Now \$125,000.



CAROLE D. BUDWORTH

## ANNOUNCEMENT

Gary Thomas, President of RE/MAX Miltowne Realty Corporation is pleased to announce the appointment of CAROLE D. BUDWORTH, to the Re/max team of sales representatives.

In addition to Carole's proven record in real estate and her active involvement in the Community as past president of Milton Chamber of Commerce, Past Chairman of The Milton District Hospital's Board of Directors, we welcome her as Milton's 1992 Business Person of The Year. Carole invites clients to contact her at 878-2365 or her residence 878-8545.



#### A SUPER SIZE KITCHEN...

is an appealing feature in this 3 bedroom, two storey home. A large masterbedroom and spacious bedrooms are another welcome addition. Affordably priced at \$168,900. Call for your exclusive viewing.



#### OWNERS LOSS, YOUR GAIN.

Only 3 weeks left to take advantage of this exceptional offering - 1900 sq. ft. building on one acre in North Burlington. Tenant will stay. Action price. \$295,000. Call now!

#### RENTAL SPACE FOR LEASE

Plaza location in Town of Milton. Owner says name the terms. Call me for further details.

#### INDUSTRIAL BUILDING LOT

One acre, municipal services, Zoned light industry. Asking \$325,000.

### STEVEN PORTER

Sales Associate



### PHIL PRESTIDGE

878-2365  
878-6924  
Sales Rep.

Your Neighbourhood  
Real Estate Specialist

\*\*\*\*\*

#### VACANT LAND

12+ Acres, Wood Lot setting, NEC approved House site cleared 10 mins N of Milton.

#### INDUSTRIAL LAND FOR SALE

2.9 acres, outside storage, full services, 100% financing. 3.0 acres, corner lot, high profile location.



#### A FAMILY TOWNHOME

Ready for your inspection. Offers 3 bedrooms, finished family room, central location. List \$132,900. Call and ask for Phil for more info.



#### PRIVACY PLUS SUNSHINE

3 Bdrm townhouse with finished Rec. Room, recent carpeting, private setting, parkland, shopping at your door steps. A must to see.



### MARILYN ANDREWS

Sales Representative  
878-7777

#### RESIDENTIAL BUILDING LOT FOR SALE

Size - 60ft. x 118.5ft.  
Location - Kingsway Place  
Levies - Paid, Fully Serviced  
Ready to Build  
Asking Price - \$125,000  
Contact  
Marilyn Andrews.



878-3195  
878-2365  
RE/MAX  
MILTOWNE  
REALTY

#### HERE ARE SOME BRIGHT IDEAS!



Huge master bdrm., F.R., rec. room, private yard with pool & Change rm. \$214,900.

ATTENTION RENOVATORS!  
Older home with great potential (Milton) \$94,900.

Now could be the best time to make your move... Call me for a pressure-free evaluation of your home.



#### NEW LISTING

Popular 4 level backsplit model offers large eat-in kitchen, 3 bdrm, 2bthrm, family room with fireplace and livingroom dining room combo with bay window. Asking \$182,900.



#### GREAT LOCATION

Beautiful Laurier Avenue home. Features 3 bedrooms, separate dining room, living room with fireplace, walkout from eat-in kitchen to deck, central air. Put this one on your shopping list. \$177,500.



### AUDREY NEWELL

Associate  
Broker

878-5339 or  
878-2365

#### VACANT LAND FOR SALE

- 4.8 acres at Moffat, now only \$169,900.
- 1.4 acres country subdivision Reduced to \$135,000.

Please call Audrey 878-2365 for further details

#### SEMI FOR RENT

3 Bedrooms, stove, fridge, central air, air cleaner, finished rec room, near school and park. \$1100 per. References required. Call Audrey at 878-2365.

4 Bedrooms, 2 1/2 baths, and main floor family room with fireplace, plus finished rec room with wet bar, large privacy fenced yard. Nicely landscaped all around. With only 5% down you could own this home for only \$1408<sup>00</sup> per month P&I. Please call Audrey at 878-2365 for more info.



Park and children's playground beside this 3 bedroom 2 storey on a crescent in Timberlea makes this a perfect home for the young family. Three bedrooms, upgraded living room, dining room, kitchen, central air, unpolished basement for you to do your own thing. All for only \$177,900. With 5% down you could own this home for only \$1408<sup>00</sup> per month P&I. Call Audrey at 878-2365 for more information.

4 Bedroom, 2 Storey well maintained home in Dorset Park. Being near schools, parks, Go Transit and a store makes this an ideal family home. The accommodation also includes a large eat-in kitchen, main floor family room with fireplace, and a L shaped living/dining room. The basement is partially finished. Listed at \$194,900. With 5% down you could own this home for only \$1540<sup>00</sup> a month P&I. Call Audrey for more information. 878-2365.