

\$105,900

NEW RELEASE

**SEMIS
IN
CAMBRIDGE
ONLY MINUTES
FROM
MISSISSAUGA**

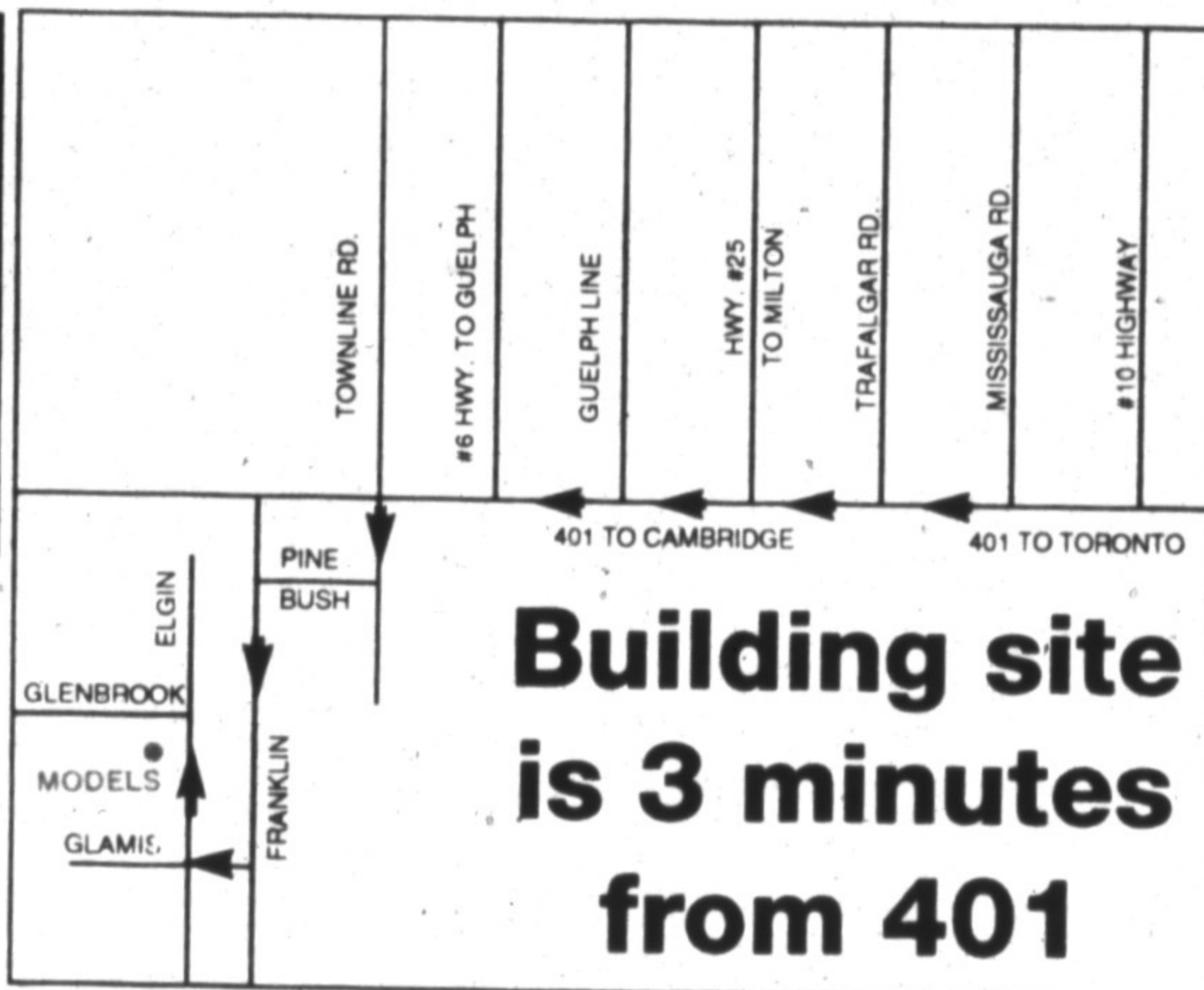
VISIT OUR MODELS

**UP TO JULY '93
CLOSINGS
LOW LOW LOW
DOWN PAYMENT**

- 3 Bedrooms
- 2 Storey
- 1-1/2 Baths
- Full Basements
- Attached Garages
- Gas Forced Air

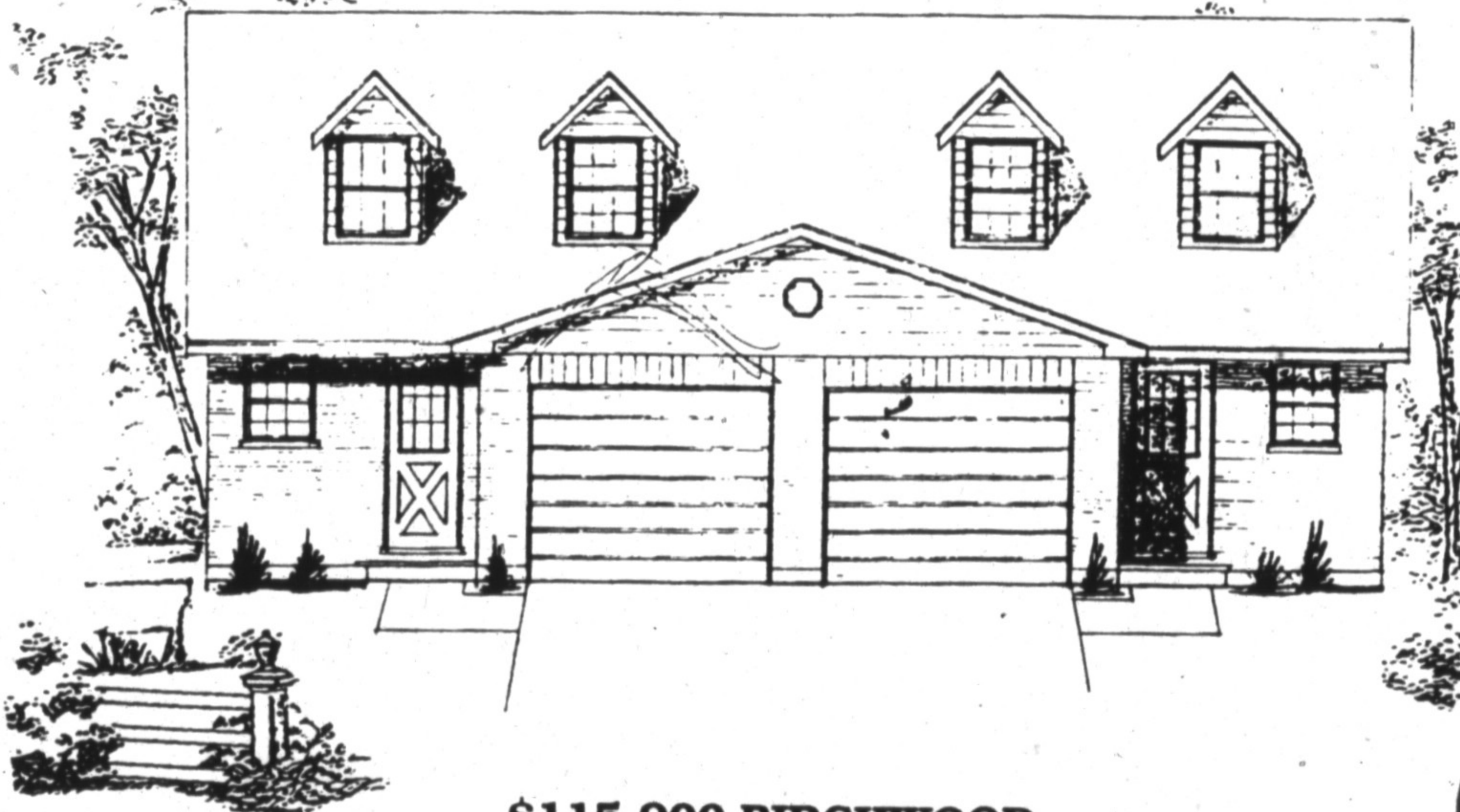
MODELS OPEN

Sat. & Sun. 1-5 p.m.
Other times by
for appointment
Project Mgr.
Eileen Strombom
CALL COLLECT ANYTIME
519-658-5973



**Building site
is 3 minutes
from 401**

"We will work with
you as you save
your low, low
down payment"



\$115,900 BIRCHWOOD
3 bdrm., 2 storey, 1-1/2 baths, att. gar.

