

**WEST RIVER OAKS**

**FREEHOLD TOWNHOMES**  
(NO CONDO FEES)



**OVER 50% SOLD  
IN ONLY 5 WKS.**

**ATTENTION 1ST TIME BUYERS**  
GUARANTEED CAPPED RATES

- \*3 YR. - 6.75%
- \*4 YR. - 7.75% WITH ONLY 5% DOWN
- \*5 YR. - 8.25%

LESS THAN \$50,000.00 GROSS FAMILY INCOME QUALIFIES YOU WITH ONLY 5% DOWN

MONTHLY PI. FROM **\$999<sup>00</sup>**

**MANY MODELS INCLUDE:**

- 35oz Upgraded Broadloom • 1/2" underpad
- 4 Model Types • Family rooms with fireplaces
- Family Sized Kitchen - 19'x12'
- Spacious Master Bedrooms - 17'x12'
- Large Living Room and Dining Room
- 3 Bedrooms - with 4 bedroom alternative

1580 sq. ft.  
**\$154,900** \*\*  
From **G.S.T. INCLUDED\*\*\***

1802 sq. ft.  
**\$169,900** \*\*  
From **G.S.T. INCLUDED\*\*\***

INITIAL DEPOSIT

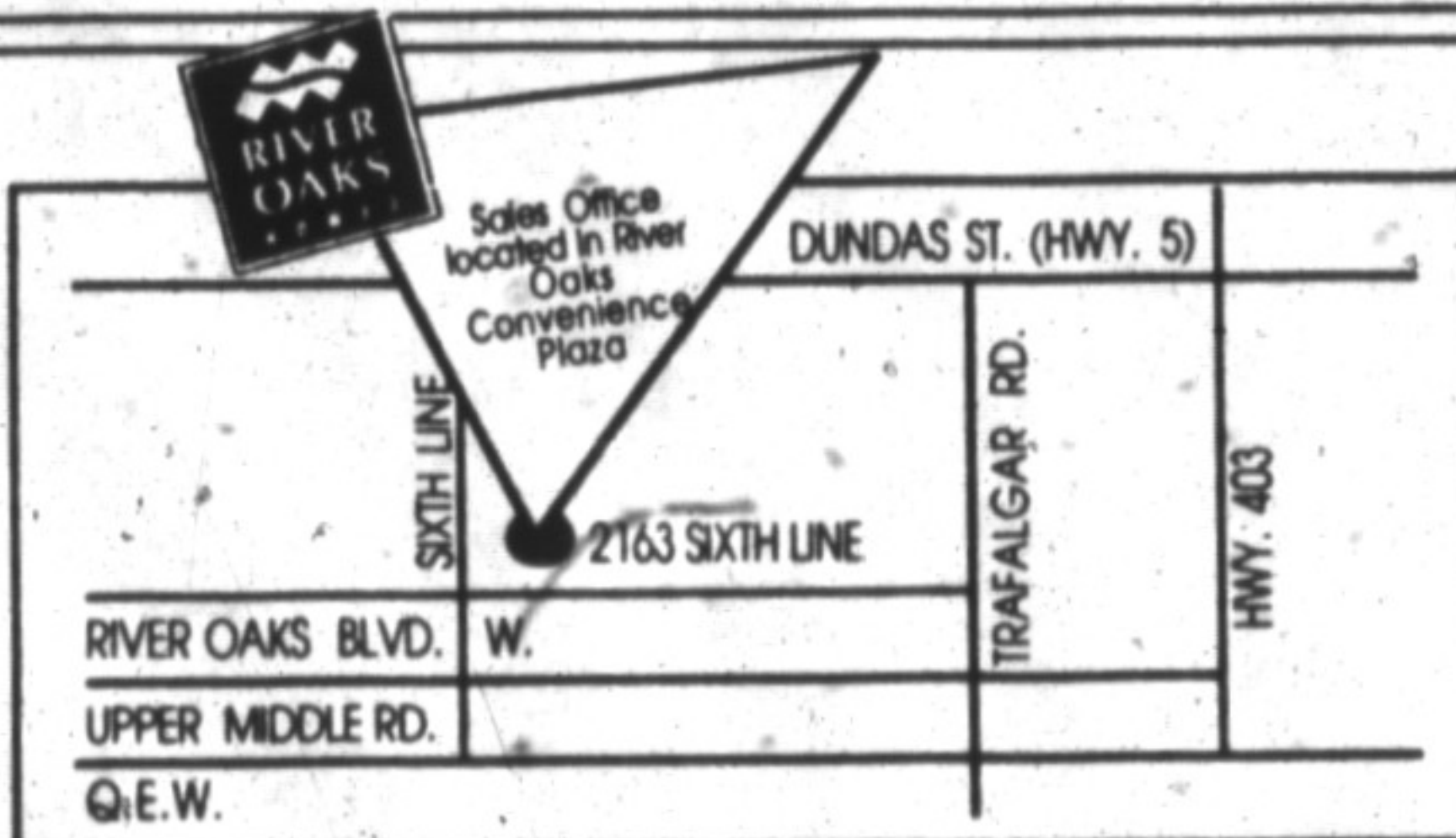


**Quiet Court**

Close to parks and school  
Great location  
June-July 1993 occupancy  
Lots of time to save

**DON'T MISS OUT**

**SALES OFFICE FOR BOTH SITES LOCATED  
2163 SIXTH LINE AT RIVER OAKS  
CONVENIENCE PLAZA**



**HOURS:**  
MONDAY TO THURSDAY 1:00 P.M. TO 8:00 P.M.  
SATURDAY & SUNDAY 11:00 A.M. TO 5:00 P.M.

**844-2033**

Prices and specifications correct at press time. Limited quantities available in all price ranges. \*Financing available subject to O.A.C. \*\*\*G.S.T. included if purchaser occupies new home

**EAST RIVER OAKS**



**6<sup>3</sup>/<sub>4</sub>% 3 YR. TERM  
8<sup>1</sup>/<sub>4</sub>% 5 YR. TERM**

**40 FT. LOT  
FULLY DETACHED**

**PRIME**

**CRESCENT LOCATION  
NESTLED AMONGST  
WOODLOT & PARKLAND.**

**MOST HOMES IN  
AREA ARE 50 FT. LOTS  
BEING OFFERED AT  
MUCH HIGHER PRICES.**

**SEE WHY OVER 1/2  
OF OUR HOMES ARE  
NOW PRE-SOLD**

**SOME PARKVIEW  
LOTS REMAIN**

**844-2033**



ALL BRICK MODEL 44 FROM 227,900

- 2275 sq. ft.
- 4 Spacious Bedrooms
- Corner Oval Tub & Sep. Shower Ensuite
- Large Eat-In Kitchen
- Double Garage
- Over 350 Sq. ft. of Master Suite with Lounge
- Main Floor Laundry Room
- Formal Dining Room
- & Much, Much More



ALL BRICK MODEL 47 FROM 239,900

- 2802 Sq. ft.
- Optional 5 Bedroom Plan
- Main Floor Den
- Formal Dining Room
- Very Large Eat-In Kitchen
- Elegant Corner Tub Ensuite
- 216" Master Bedroom
- Optional 3 1/2 Baths
- Ideal Home For Large Family With Nanny

- \$1,000 INITIAL DEPOSIT**
- LOW DOWN PAYMENT FROM 5%**
- G.S.T. INCLUDED IF PURCHASER OCCUPIES HOME**
- 25 YR. TERM MORTGAGE AVAILABLE**