

The Canadian Champion

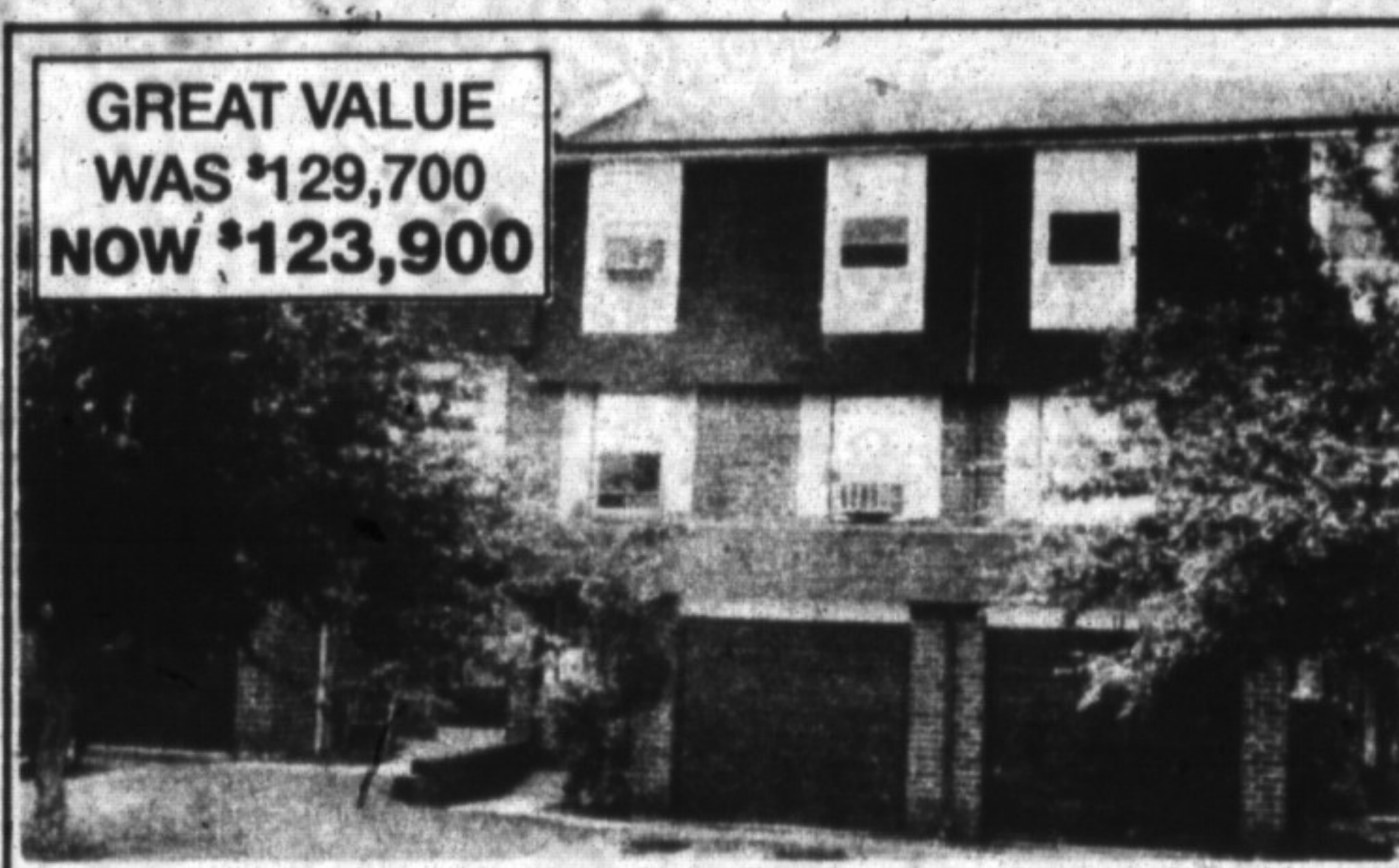
Best Homes



\$490,000 REALTY WORLD

Enjoy fine country living in this Campbellville Cape Cod. Spacious foyer, hardwood floor, breakfast nook overlooks pool & patio, wall-to-wall fireplace, jacuzzi, 5 bedrooms, finished loft & many more features!

REALTY WORLD - W. J. McCRUDDEN REAL ESTATE
JOSEPH MANCHISI 876-1133



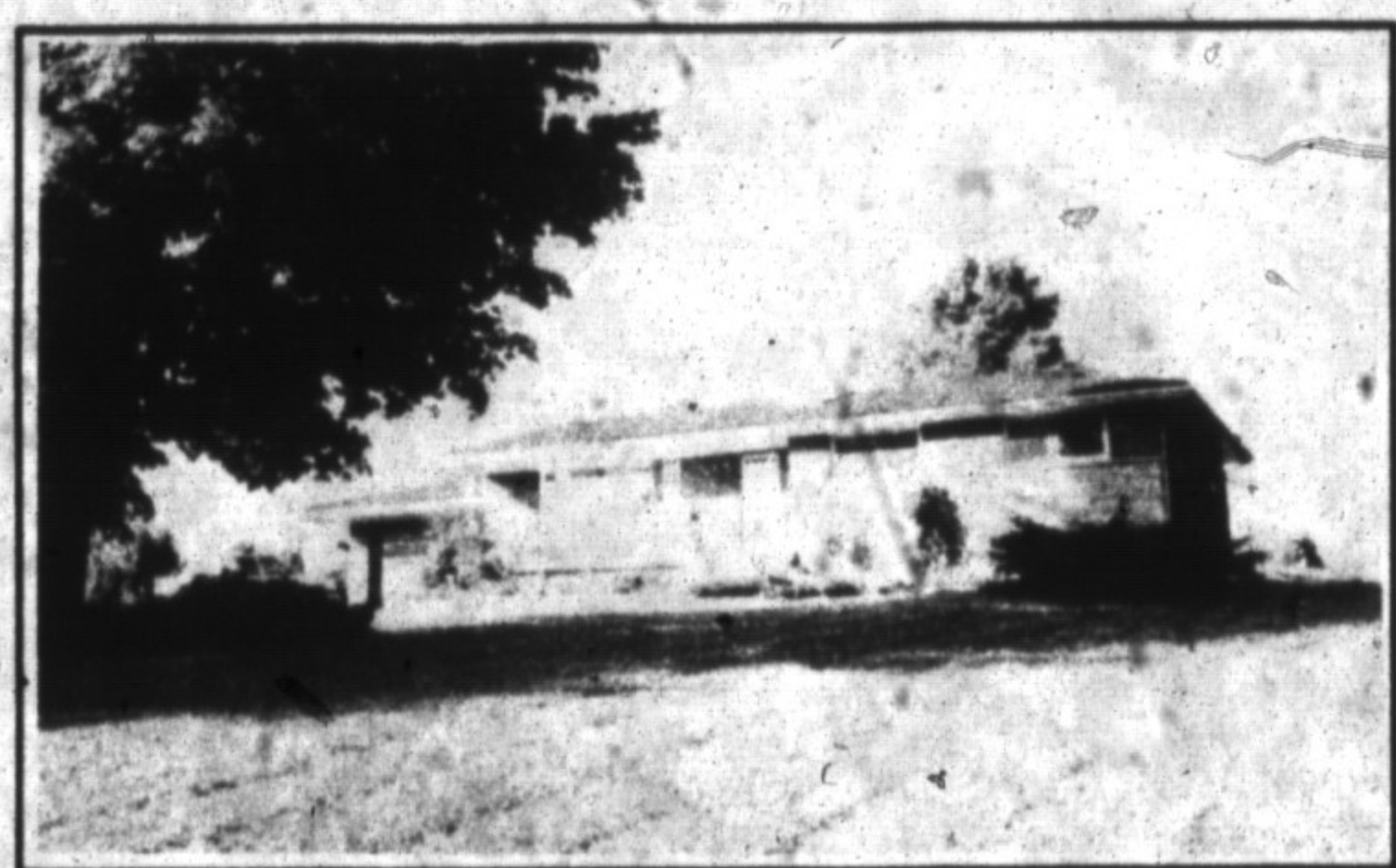
**GREAT VALUE
WAS \$129,700
NOW \$123,900**

\$123,900

ROYAL LEPAGE

This townhouse has a great location! It faces single family homes, backs onto greenspace, has only 3 units in this building and has an extra long driveway. (will hold 3 cars). Features include: Ceramic floor in Kit. with walkout to fenced yard, separate D.R. and Fin. Rec. Rm. Can have 5 bedrooms if needed! Call today.

ROYAL LEPAGE REAL ESTATE SERVICES LTD.
SANDY DEL PAPA 878-8101



\$329,000 Countrywide

15 OUTSTANDING ACRES Pastoral Retreat from the city, yet only 10 min. to Milton/401. Meadows, trees & pond peacefully surround this home loaded with extras. Solarium kitchen, skylights, gleaming hardwood, sunken living room, jacuzzi & sauna. Asking \$329,000.

COUNTRYWIDE CAMPBELLVILLE REALTY INC.
HEATHER ASHBE 875-2294, 854-2294



\$519,900

RE/MAX

INCREDIBLE VALUE. This Country Estate has every option imaginable. Vaulted ceilings in D.R. & L.R., new spotless kitchen. All over looking private yard with inground pool and gazebo, four fireplaces - 8 person jacuzzi, sauna, three car garage plus much more. *Note this house is being sold under Power of Sale.

ROYAL LEPAGE REAL ESTATE SERVICES LTD.
PAUL PAGE 878-2365



\$589,000

RE/MAX

CAMPBELLVILLE TUDOR. Old English Tudor, vaulted ceilings, gorgeous wood panelling, minstrel gallery, interlocked brick patios. All on 2 acres in private estate subdivision.

RE/MAX MILTOWNE REALTY CORP.
ANNE TAYLOR 878-2365



\$129,900

RE/MAX

Completely redone from top to bottom in last few years. 3 bedrooms, finished rec. room, separate dining room. A must to see.

RE/MAX MILTOWNE REALTY CORP.
JOHN (J.P.) PEARS 878-2365