

# BOTTOM LINE

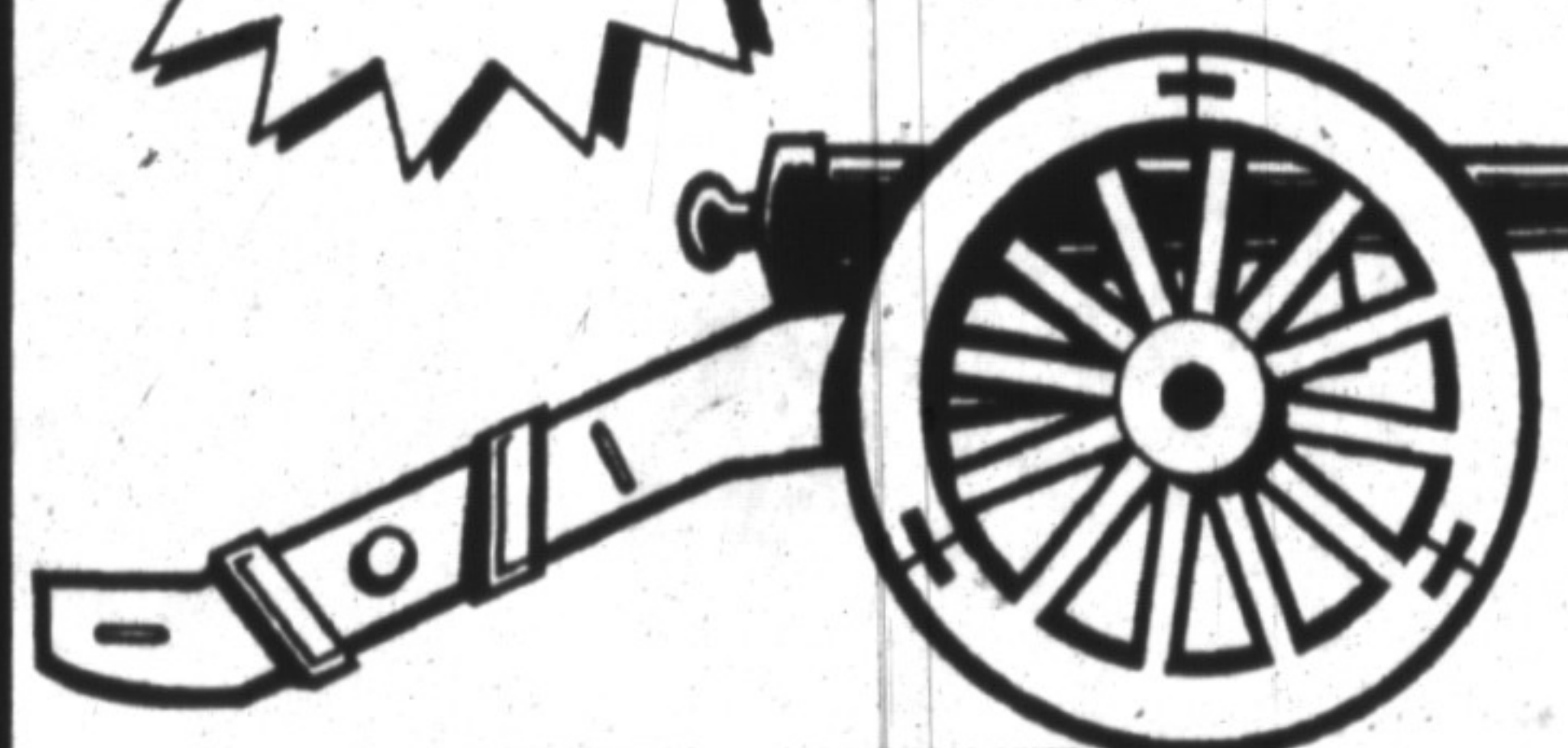
# SALE

## THIS IS IT!

**FRIDAY  
AND  
SATURDAY  
ONLY!**

**2 DAYS  
REMAINING**

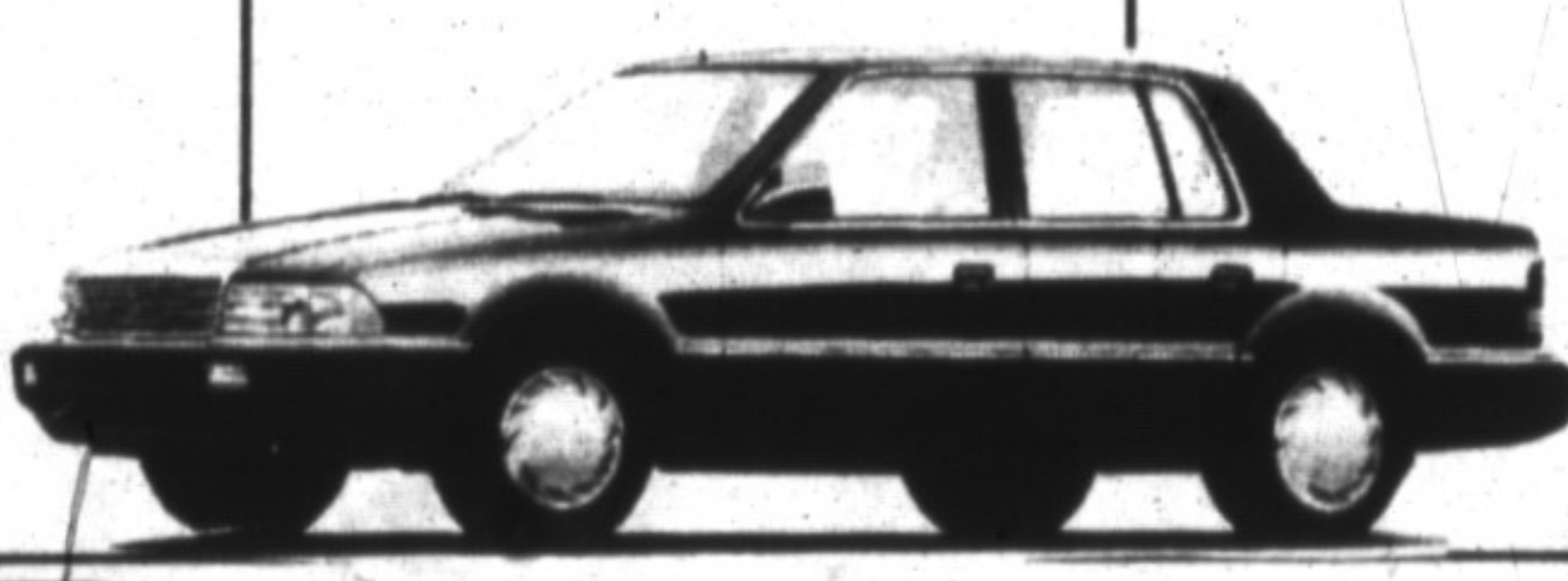
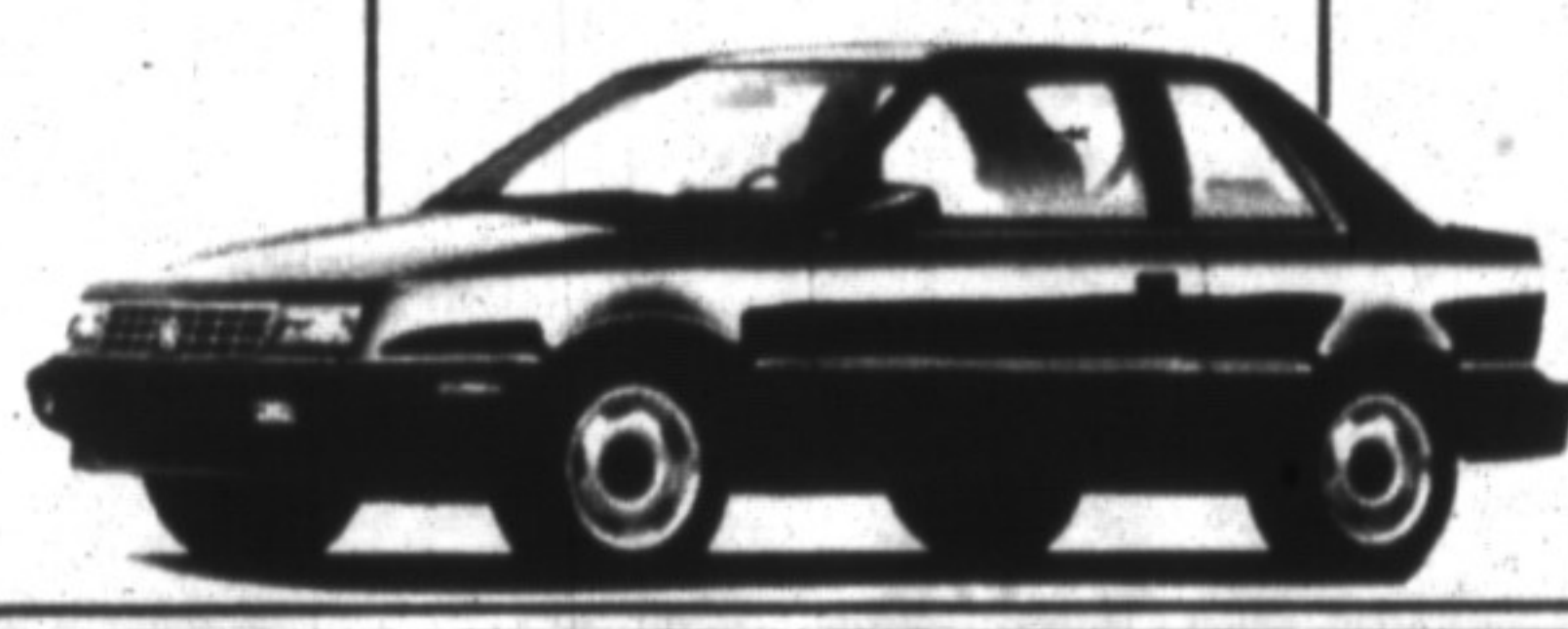
# 1992 BLOWOUT!



UP TO  
**2000<sup>00</sup>**  
CASHBACK  
AVAILABLE

**HUGE  
DEALER  
DISCOUNTS**

**2.9%**  
FINANCING  
AVAILABLE  
On Selected Models



### USED CARS

1992 Chrysler 5th Ave., 4 dr., blue.....21,595	1990 Jeep YJ (Auto), 2 dr., black.....12,995	1988 Chrysler N.Y. Landau, 4 dr., blk cherry...9,395
1992 Plymouth Acclaim, 4 dr., blue.....11,595	1990 Plymouth Sundance, 2 dr, silver.....7,495	1988 Renault Medallion LX, 4 dr., white.....5,995
1992 Dodge Spirit, 4 dr., silver.....11,595	1990 Dodge Spirit V6, 4 dr., silver.....8,595	1987 Dodge Caravan Wagon, red.....6,595
1992 Dodge Shadow, 4 dr., black.....9,995	1989 Plymouth Acclaim LX, 4 dr., white.....9,495	*1986 Dodge Aries Wagon, cream.....3,995
1992 Plymouth Acclaim, 4 dr., gold.....11,595		

**PRICES TOO LOW TO ADVERTISE.  
NO DEALERS PLEASE!**

**ALL SALE PRICES CLEARLY  
MARKED ON WINDSHIELD!**

New Car Sale prices plus freight, air and all taxes. See dealer for details.

**WE ARE THE # 1 CHRYSLER VOLUME SALES DEALERSHIP IN MILTON OVER THE PAST TWO YEARS.  
WHY?**

**BECAUSE WE SELL FOR LESS!**



**PLYMOUTH CHRYSLER**

**500 BRONTE ST.**

**MILTON**

**876-2580**

**"MAKE THE WISE CHOICE"**  
• WE WANT YOUR BUSINESS •  
We honour all Chrysler, Plymouth and Dodge warranties

