

The Canadian Champion

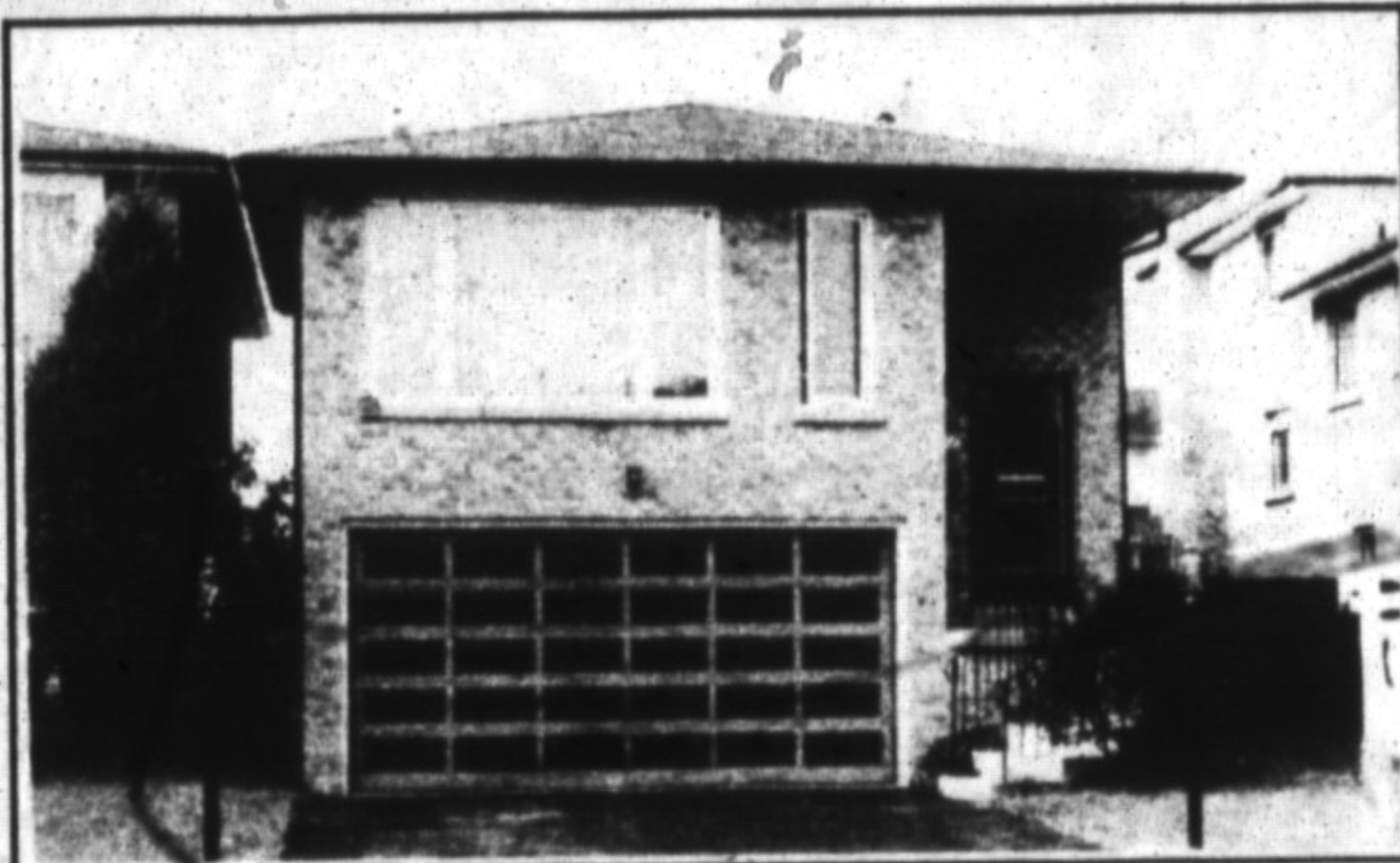
# Best Homes



**\$279,000** **Countrywide**

**SUPER HOME — SUPER PRICE** Mins. from 401 & Guelph Line. Beautiful 1 acre lot. Well constructed 4 bdrm. home, master ensuite. Huge kit., w/p to deck, main flr. F.R. W/F.P., formal.D. R. Fin. basement.

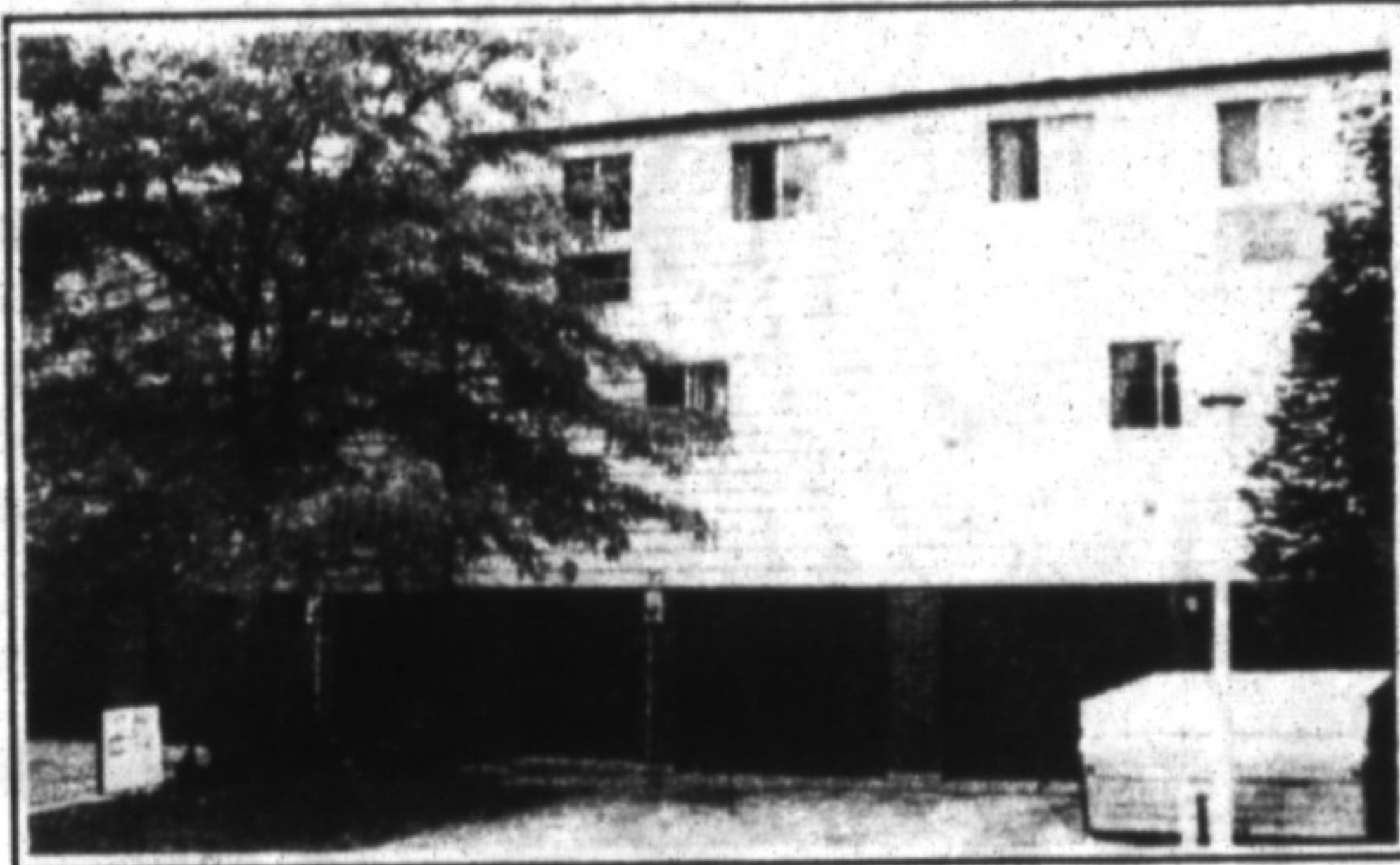
**COUNTRYWIDE CAMPBELLVILLE REALTY INC.**  
SYLVIA BURSEY 875-2294, 854-2294



**\$189,000** **REALTY WORLD.**

This 4 bdrm. home features all the extras you deserve: Oak cupboards, F.P. with insert in Family room & gas F.P. in lower level (Possible in-law suite). C/A, C/V, I/G pool with heater & more.

**REALTY WORLD - W. J. McCRUDDEN REAL ESTATE**  
JO-ANNE VAN SLINGERLAND 876-1133



**\$130,900** **ROYAL LEPAGE**

**AN ATTRACTIVE TOWNHOUSE ...** Close to the mall: Central air, refinished kitchen and bathroom. Flexible possession. \$130,900. View it with:

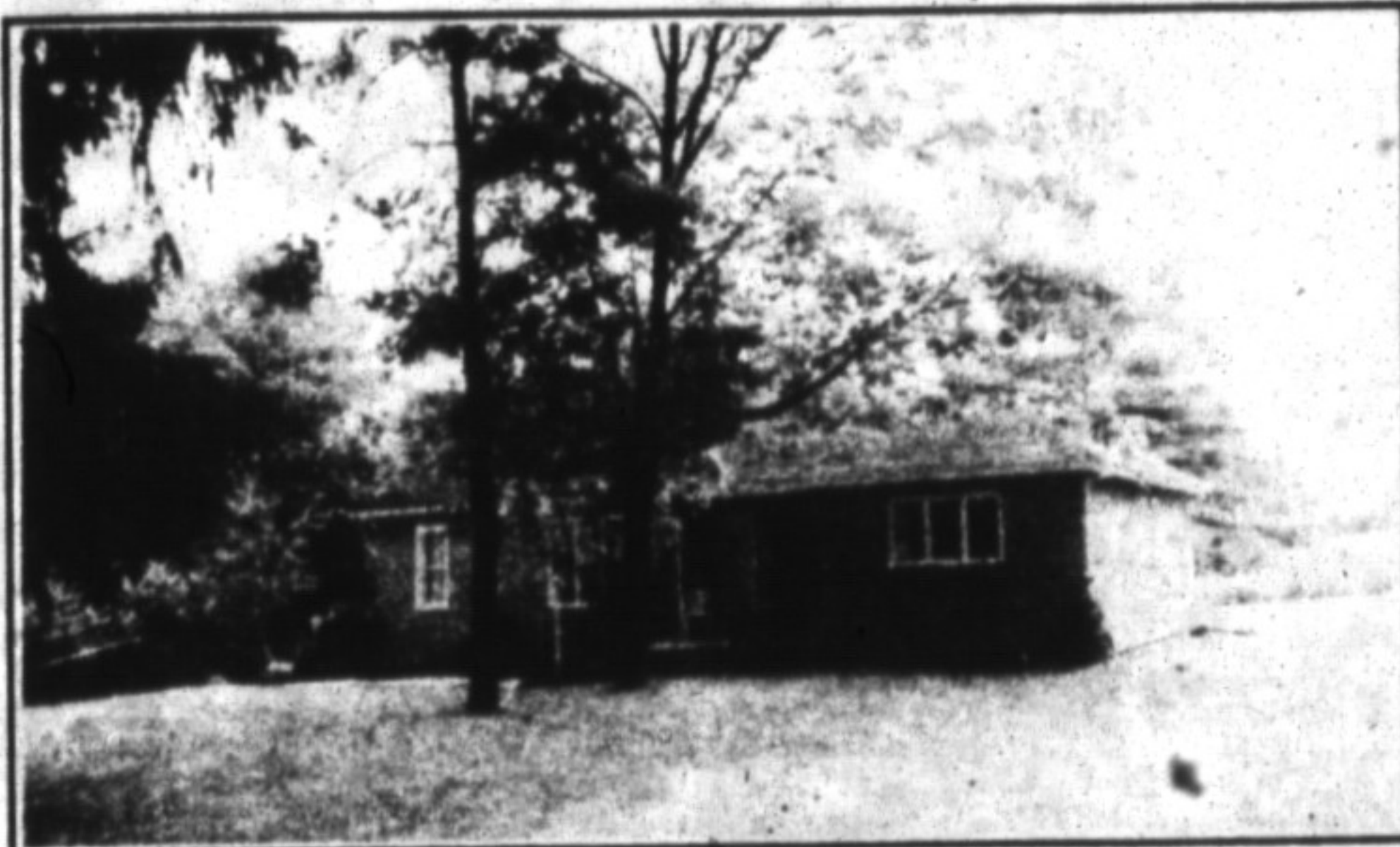
**ROYAL LEPAGE REAL ESTATE SERVICES LTD.**  
RUDY ARBEITER 878-8101



**\$675,000** **ROYAL LEPAGE**

**TRY AN OFFER!** Estate sale. 94 acres with 1,420 ft. frontage minutes from Mohawk & 401. Stone house with new wiring, septic and well and barn.

**ROYAL LEPAGE REAL ESTATE SERVICES LTD.**  
ED OR NORMA PROVEAU 878-2365



**\$239,900** **RE/MAX**

**STEP INSIDE** and you will find a gorgeous, completely renovated bungalow with new addition. 3 bedrooms, beautiful oak kitchen, interlocking brick patio and set in quiet village. Such a pleasure to show.

**RE/MAX MILTOWNE REALTY CORP.**  
LINDSAY J. McLAREN 878-2365



**\$129,200** **RE/MAX**

3 Bedroom Townhouse with garage. Separate dining room. Upgraded kitchen, tastefully decorated throughout, some new flooring, close to shopping, day care, schools & hospital.

**RE/MAX MILTOWNE REALTY CORP.**  
BETTY INGLE 878-2365