

Countrywide

CAMPBELLVILLE REALTY INC.

14 Martin St., Milton
875-2294

90 Main St., Campbellville
854-2294

Countrywide
Independent Member Broker

RE11 - The Canadian Champion, Wednesday, September 30, 1992



40 ACRE HORSE FARM

Located on Guelph Line, min. south of Mohawk Raceway. 1-24 Stall Sunk Barn, 1-7 Stall Barn, 6 Paddocks, 1/2 mi. Training Track. A large 4 bedroom home, with 3 bathrooms, beautiful Oak Kitchen, Fireplace in Living Room. 47 acres of abutting land also available for sale. Call Sylvia.



OPPORTUNITY FOR HORSEMEN

Excellent flat & rolling 36-acre property in Campbellville. Super 23-stall barn and 5-bedroom, 2-bath home surrounded by mature trees with stream. \$525,000. To view, call Isabel.



TWO HOMES AT ONE PRICE

Use rental income to help with mortgage payments. Package includes a separate two-story guest house. This home has been totally renovated with top-quality material, fixtures and workmanship throughout. Hamlet setting, 3 kms. to GO train. Call Bill Elliott.



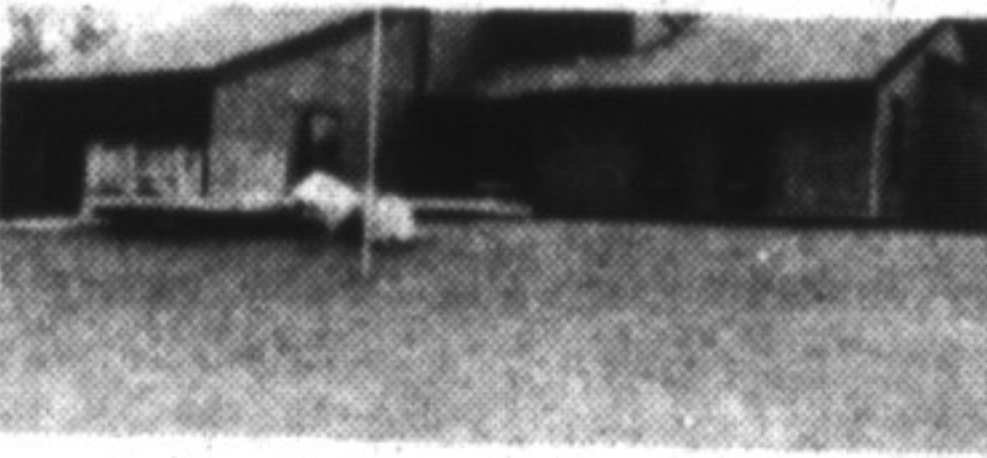
NEED A FOUR-CAR GARAGE?

Workshop? Escarpment Country Property? Don't pass this one by. Solarium, skylights. Sunny kitchen & walkout basement for inlaw. Asking \$265,900. Call Heather.



15 ACRES BREATH-TAKING BEAUTY

Rolling, treed with meadows, spring-fed pond and orchard. Not a drive-by! House features Barzotti Kitchen, charming solarium, gleaming hardwood, sauna, jacuzzi, upgraded windows and on and on. Asking \$329,000. Call Heather.



CONTEMPORARY BUNGALOW

On a professionally landscaped two-acre lot in Brookville Estates. Barzotti kitchen, Pella sun-room. Pine trim and decorating upgrades throughout. This is an exceptionally well-built home in immaculate condition. Call Bill Elliott.



IT WON'T LAST

Shows like a dream. 4-bdrm townhouse backing onto park. Prime Childs Dr. location, new broadloom, air-conditioning and professionally finished rec. room. Asking \$199,900. Call Heather.



REDUCED

Martin Street exposure for your professional offices with room for two apartments as well. Call Heather for zoning details.



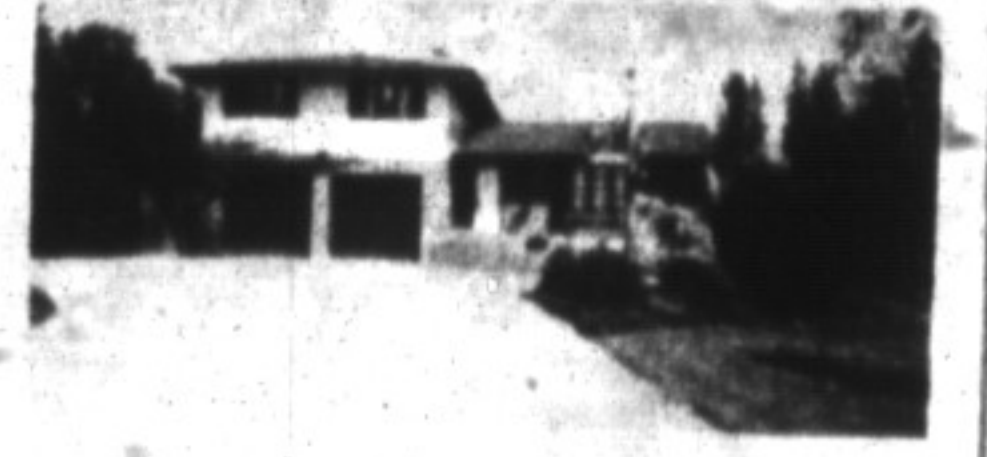
CUSTOM DESIGN

Beautiful custom-built home on 4.68 acres. Nicely treed & landscaped. Just south of Campbellville. Numerous walkouts to decks and patios. Florida room, 2 fireplaces, 3 baths, fully finished lower level. Could be a two-family home. Listed at \$395,000. Call Sylvia.



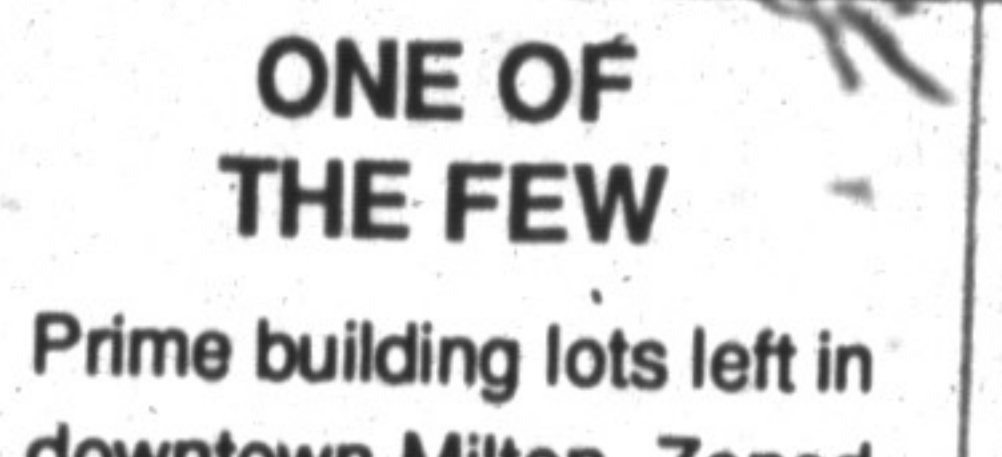
R. R. #1 MOFFAT

Beautifully situated on 3.92 ac., 4 bedrooms, 3 baths, recently renovated and features whirlpool tub and separate shower in master ensuite. Also fully insulated steel stable with 2 stalls, ideal for horses. 2nd shed steel clad with all hardware for 3 more stalls. Contact Grant Mitchell.



CONVENIENTLY LOCATED

Min. from 401 & Guelph Line. Short walk to public school, beautifully landscaped 1 AC. lot. Well constructed home with 4 large bdrms, master ensuite. Huge country kit. with W/O to deck, main fl. family rm. with W/O and stone fireplace. Nicely decorated formal dining rm with french doors. Fin. rec. rm., office & workshop in basement. Heated double garage. Call Sylvia for viewing appt.



ONE OF THE FEW

Prime building lots left in downtown Milton. Zoned for estate home or multi-unit residence. Over 3/4 acre priced at \$154,900. Call Sylvia today.



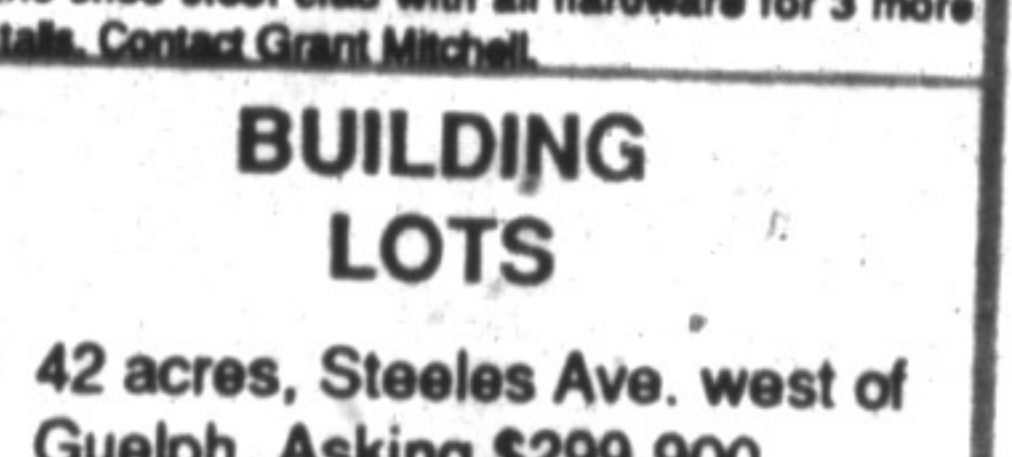
DELIGHTFUL APPLEBY LINE

Parklike setting in your own backyard! Mature trees & stream. Beautiful 4 bedroom bungalow with basement walkout. Many special features for \$259,000. Call Heather.



SOUTH OF MILTON

3 bedroom bungalow with finished basement, main-floor family room, double garage & workshop, one bedroom apt. over garage partly finished. Over 1 acre. Only \$188,900. Call Sylvia.



BUILDING LOTS

- 42 acres, Steeles Ave. west of Guelph. Asking \$299,900.
- 7 acres, 2 frontages. Beautiful lot. Only \$138,000
- 47 Acre treed lot. Second Line, min. from Campbellville Village. Asking \$309,000. Call Sylvia

ROYAL LEPAGE Advantage



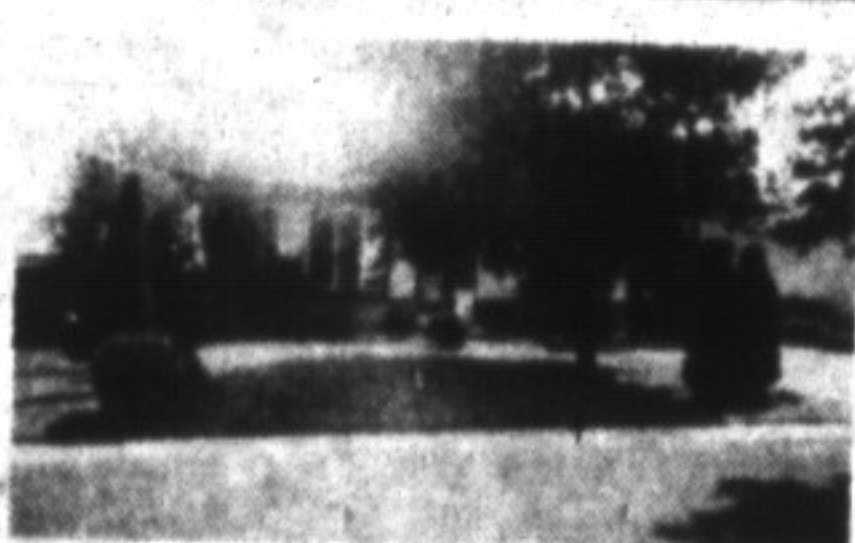
END UNIT TOWNHOUSE

3 bdrm. finished family room, kit. with breakfast nook, 1-1/2 baths, fully air conditioned, private location. \$134,900. Denzil Lawrence* 878-8101.



PARK-LIKE SETTING ON 8 ACRES

This must be seen to appreciate its beauty with its water fountain, electric lighted paths through the woods, inground heated pool, etc. \$479,000. Denzil Lawrence* 878-8101.



DORSET PARK DELIGHT

\$188,900.

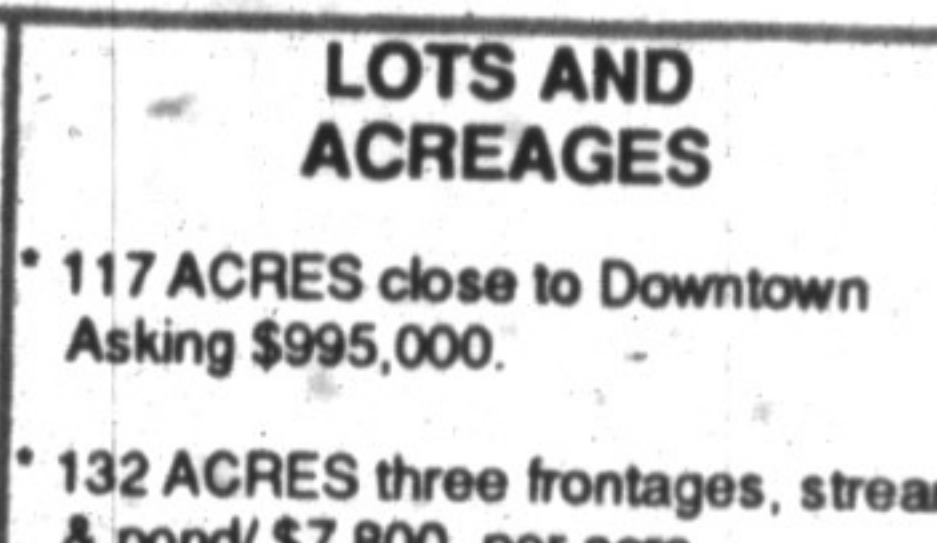
This home features neutral decor, large well-landscaped lot, new kitchen plus many other extras. Call Sandi Kinsale* to view. 878-8101.



TRY YOUR LUCK ON THIS ONE

\$217,000.

Wonderful country property comes with 3 bdrm. sidesplit, 8ble. garage and more. Joyce Hagevik* 878-8101.



LOTS AND ACREAGES

- 117 ACRES close to Downtown Asking \$995,000.
- 132 ACRES three frontages, stream & pond/ \$7,800. per acre.
- 1-1/2 acre lots ready for your dream home \$124,900.

DENZIL LAWRENCE* 878-8101

YOU CAN SKI TRAILS TO FREEDOM!
Time share condo near Collingwood. 2 bedrooms with all amenities. Use in week 10 or trade for many other choices. Call for details. \$15,900. Barbara Mallalieu* 878-8101.



1/2 ACRE BEAUTY CLOSE TO TOWN

Mostly upgraded inside and out. Fabulous view. Joyce Hagevik* 878-8101.



FABULOUS BACKYARD

\$179,900.

3 bdrm. raised bungalow, 2 baths, lovely rec room with woodstove, den & more. Joyce Hagevik* 878-8101.



VILLAGE PARC ON THE POND

2 bdrm. Elora model overlooks escarpment. Corner site. \$215,900. Try an offer. Andrea Lear-Costigan* 878-8101.



LUXURY GALORE!

Approx. 3300 Sq. Ft. plus 2400 sq. ft. lower level, whirlpool bath, fireplace, stunning Binova kitchen, 4 bedrooms, library. Helen Hardy* 878-8101.



GREAT FAMILY NEIGHBORHOOD

This immaculate 3 bedroom, 3 bath home offers the space and value you want. Main floor family room, fireplace, ensuite bath and large lot are features sure to delight any young family! \$188,500. Barb Lefebvre* 878-8101.



GREAT FAMILY HOME

Located in a friendly village atmosphere minutes to 401. Comes complete with spacious kitchen, 3 bdrms., hardwood floors, single garage. All custom built. Listed at \$169,900. Call Eve Gooding* 878-8101.



\$179,900.

SURPASSING OTHERS BY FAR
And ranking among the best in quality. Gorgeous kitchen with walkout, finished recreation room, top of the line broadloom & bleached oak flooring. An immaculate home!



BUILDING LOT "FOR SALE:

\$25,000. is the asking price for this 1.5 acre retreat close to Napanee. Call Wayne Casson* 878-8101 for details and directions for this unbelievable deal. Vendor will hold a mortgage for the balance interest free.



CALLING ALL HOBBY FARMERS

100 acre beef farm complete with cattle, barns & silo, machinery and storage sheds, large farmhouse. A must to see. Call Wayne Casson* 878-8101 to view this property near the village of Tweed. Priced at \$349,000.00.

388 MAIN ST. EAST



878-8101 (Tor. Line) 338-4838