

A new floor can bring a kitchen to life

"A floor is a floor is a floor" might have been the prevailing sentiment in the not-so-distant past, but today, the exciting array of floor covering designs and colorations makes resilient flooring the hottest way to bring a kitchen to life.

And, with more consumers opting for remodeling for economic reasons, more homeowners are discovering that one of the simplest, yet most dynamic, ways to change the look of a room is to start at ground level.

Today's homeowners not only are more conscious of the bottom line than ever, they also are more aware of design and decorating trends. This means that changes in decor need to give optimum value in appearance, cost and longevity.

Changing the floor can transform the entire look of a room, while setting the stage for the addition of personal styling.

Updating old, worn sheet vinyl with today's more durable, sophisticated resilient flooring can mean going from dull to dramatic, from passé to progressive. And, with people spending an increasing amount of their free time at home, and even more time in the kitchen to entertain and eat, as well as to do paper work and watch television, the floor needs to be durable and comfortable to stand on for long periods of time. The highest quality resilient floor fills both these requirements.

When deciding to remodel your kitchen, consider the following:

- Are you interested in just changing the color scheme?

- Do you want to drastically change the design theme (i.e., going from colonial to contemporary)? Or would a more subtle, new "feel" and fresh personal styling provide the update you're looking for?

- What in the kitchen needs to be changed to achieve the functionality you want? In other words, what's just plain worn out?

- And, what is the least that can be changed to make you a happy homeowner?

If you want to drastically alter the kitchen's overall theme, and everything from floor to ceiling has just about had it, you'll need to start from scratch and allot a large budget to the project (anywhere from \$25,000 to \$50,000 or more).

But, if your major appliances are still in working order and the cabinetry space is adequate, then changing the flooring, which has probably experienced the most wear and tear, can probably do the most to update and refresh with the least hassle and expense.

For instance, wood cabinetry that looks unexciting with a dull, nondescript floor, can achieve classic proportions when complemented by shining faux-marble vinyl flooring, such as the Carrara design from the Mannington Sterling™ collection. For a classic look, accessorize in soft tones of grey and white (i.e., napkins, dishes), with accents of lemon yellow or rich sky blue for interest and impact (i.e., glassware, vases, artwork).

If your white kitchen could use a little pizzazz, there are several options available. For a high-tech look, select a bold geometric-designed resilient floor (checks, diamonds, etc.) in black and white. Add "industrial" chrome

and silver counter appliances, and maintain the black and white theme for accessories.

White kitchens also can be given added warmth with the neutral tones of imitation sand, granite, stone, gravel or stucco floor designs. The benefit is that resilient flooring simulating marble, granite, slate or stone is offered at less cost than the real thing, and is more giving and warmer underfoot, more forgiving when objects are dropped on it, and easy to care for.

The whiter, brighter kitchens so many homeowners want also can get just the touch of green — jade, seafoam, forest — so popular in today's environment-conscious society.

White, natural and light to medium wood cabinetry also can be updated with terra cotta and spice toned flooring, which helps to bring an earthiness (such as a comfortable southwest theme) to the kitchen. These tones are

especially popular for faux stone or ceramic flooring designs, although corals and yellows are also popular for the floral patterns so complementary to Country-themed rooms.

These rich tones work well with lighter wall colors, and jewel tones are attractive accessory accents (as evidenced by the recent popularity of bright pottery and ceramic dishes in bright shades of violet, blue, red, and yellow).

When you're remodeling, remember: Take the time to plan and to visualize, as much as possible, the finished look you're trying to achieve. Then decide on the essential alterations and/or additions that your kitchen needs for functional as well as design purposes. And, of course, consider how well the new look for the kitchen will complement, and provide a logical transition to, existing decor in adjoining areas. Once you take care of these basics, remodeling the kitchen, even on a tight budget, can be a fun, creative process.



IS YOUR GARAGE DOOR ANOTHER ENERGY GUZZLER IN YOUR DRIVEWAY?

Since garage doors cover the largest opening in a home, insulated garage doors can substantially reduce energy loss. To help homeowners save energy — and money — Stanley Door Systems has designed the Autograph IV insulated garage door with a 7.7 R factor.

The garage door also features a full complement of custom insulated windows and a bottom weather-strip that eliminates air and water infiltration.

YARD WASTE LAWS LEAVE HOMEOWNERS "HOLDING THE BAG"

What to do with yard wastes is a growing problem in this country, since more and more municipalities are banning grass clippings and other yard debris from landfills.

To help homeowners easily comply with these ordinances, the new Troy-Bilt Chipper/Vac™ chips and shreds branches and prunings, and vacuums leaves and other organic ground debris while the operator walks.

Its automatic bagger also collects the shredded material, which can be used as environmentally-beneficial garden mulch.

H13—Home Improvement, The Canadian Champion, September 9, 1992



Switch to PROPANE and SAVE!

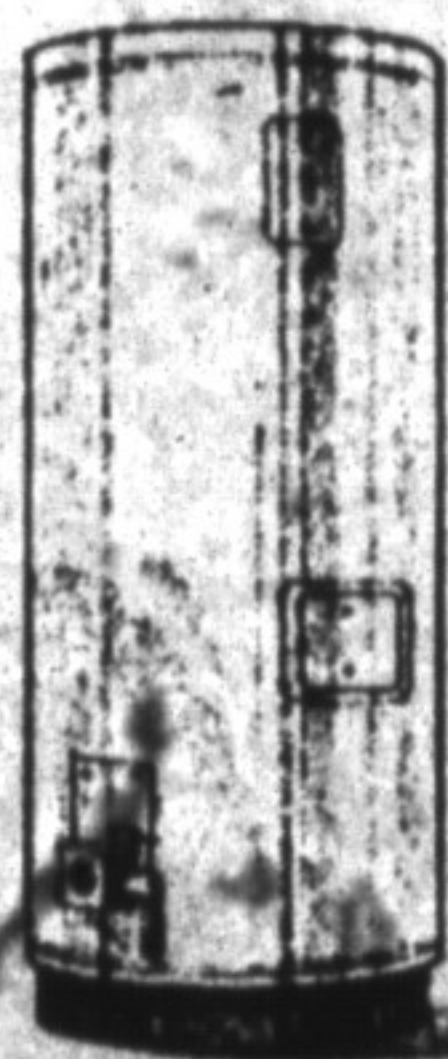
Over \$1,000 To Add More Joy To Your Home!

Call your local Superior Propane Branch today and get your valuable money saving coupon booklet, worth over \$1,000 in savings. It's also your chance to win a \$5,000 Shopping Spree*. And ask about the new Superior Ownership Plan to make switching to Propane easy and worry free. So call today and add more joy to your home!

* Complete rules and regulations available at your local Superior Propane Branch.

FREE INSTALLATION!*

When you purchase or rent** a new domestic Propane Water Heater



Superior Propane Inc.

Tired of waiting for hot water? Switch to a Propane Water Heater and you may never be left in the cold again! With Propane, the hot water recovery rate is up to two and a half times faster than electricity.

For your FREE hot water needs assessment call your local Superior Propane Branch today!

*Subject to Superior Propane's guidelines for a standard domestic water heater installation. Contact your local Superior Propane Branch for details.

**Rental not available on all models. Limited time offer. Details in Branch.

SAVE \$300!

On the purchase and installation of a new High Efficiency Propane Furnace



Superior Propane Inc.

Time to replace your old oil furnace or electric heating system? Switch to a reliable High Efficiency Propane Furnace for your home or cottage and say goodbye to your smelly oil furnace or high electricity bills.

For your FREE heating needs assessment call your local Superior Propane Branch today.

Limited time offer. Details in Branch.

RECYCLING IS IN THE BAG

Consumers can now easily haul — and store — their recyclables with the Ames Lawn and Leaf Bag Cart.

Originally designed for hauling leaves and clippings, homeowners are discovering that the multipurpose cart is ideal for recycling aluminum cans, paper, plastics and other recyclables.

The cart fits all bag sizes from 20 to 45 gallons, holds up to 80 pounds and folds flat for storage.

ANTRIM INTERIORS

PROFESSIONAL PAINT & PAPER HANGING

25 Years Experience
878-1784

130 THOMPSON ROAD, MILTON

878-2318

Copyright © 1992 Superior Propane Inc.

