

DATELINE

DateLine is a free listing of coming events only, available to local community groups to assist in promoting their future events. Only charitable or non-profit community groups may use this service. We can only guarantee one issue of publicity closest to the date of the occurrence although more insertions are possible if other demand is low.

Notices for DateLine should be written and handed in at the office of The Champion, 191 Main St. E., or mailed to us at Box 248, Milton, Ont., L9T 4N9. The final deadline is noon Friday for Wednesday's edition and noon Wednesday for Friday's edition. No items for DateLine will be accepted by telephone.

Wednesday Sept. 9

The Milton Cribbage League holds registration at the Royal Canadian Legion (downstairs club

room) from 7:30 to 9 p.m. Season play starts September 16 at 7:30 p.m. Everyone is welcome.

Club 88 holds its first pot luck lunch of the season at the Royal Canadian Legion at 12:30 p.m. All seniors are welcome. Memberships cost \$2.

Thursday Sept. 10

The Victorian Order of Nurses holds a foot care clinic at Milton Community and Information Services in the Optimist Centre, 311 Commercial St., from 9 a.m. to noon. The cost is \$15. For further information or an appointment, call 875-4636.

The Milton and District University

Women's Club invites all women graduates to tour the Town Hall gardens at 7:30 p.m. For more information, call Tina Hopkins at 876-4003.

The Women of Halton Action Movement (WHAM) meets at Shell House on Lakeshore Road, east of Burloak Drive, at 7:15 p.m. Pat Kelly of the Burlington Breast Cancer Support Service is the guest speaker. Everyone is invited to attend.

Thursday Sept. 10-11

CHERISH Parent Child Centre holds an open house for information and registration from 9:30 to 11:30 p.m. Annual membership costs \$25

per family and includes use of the toy library and drop-in program. Visit the centre in the lower level of the Optimist Centre, 311 Commercial St. For more information, call Sue at 876-4365.

Friday Sept. 11-13

The Oakville & District Kennel Club hosts Championship Dog Show at Milton Fair Grounds. The show starts at 9 a.m. Friday and 8 a.m. Saturday and Sunday. Admission costs \$2 for adults and \$1 for seniors and children under 12 years old. Proceeds to the Salvation Army.

Saturday Sept. 12

Las Vegas Night takes place at

Pineland Farm on Trafalgar Road north of Steeles Avenue in Hornby at 7:30 p.m. Tickets cost \$20 per person and are available at The Champion office. For more information, call 878-7211, ext. 190. The second annual event is a fund-raiser for the new leisure centre.

Community Open House takes place at Milton Mall from 10 a.m. to 4 p.m. The event informs area residents about community services as well as recreational and cultural programs to be held this fall and winter.

Sunday Sept. 13

The Ontario Agricultural Museum on Town Line hosts Harvest Festival and Farmer's Market. Activities include a heavy horse ploughing match, craft demonstrations, and farm fresh produce.

Omagh Presbyterian Church celebrates its 154th anniversary with services at 11 a.m. and 7:30 p.m. The guest preacher at the morning service is Rev. Trevor Lewis. A lunch follows. All are welcome.

Nassagaweya Presbyterian Church No. 15 Sideroad east of Guelph Line, holds Rally Day and registration for church school at 9:30 a.m. Children of all ages are welcome. Sunday School is held during church services. For more information call Penny at 1-519-856-9097, Betty at 854-0874, or Sandra at 854-2240.

Monday Sept. 14

Milton Children's Chorus holds registration and beginning day at Hugh Foster Hall at 3:45 and 5:30 p.m. For information, call 875-3310.

The Milton Music Teachers' Association meets at Hugh Foster Hall at 9:15 a.m. All members — old, new, and prospective — are welcome. For further information, contact Valerie Foggin at 854-0437.

Registration for Milton Children and Youth Place programs starts today. Family Time and Leisure Time programs are geared for parents and caregivers with children from infants to 5 year olds. Adult programs include topics of personal growth and first aid. Social skills programs are available for 6-16 year olds. The centre is located at 917 Nipissing Rd. (at Thompson Rd.). For information, call 876-1244.

Monday Sept. 14-15

Free English classes for adults through the Halton Board of Education begin Monday at 7 p.m. at Milton District High School and Tuesday at 10 a.m. at E.C. Drury High School. For information, call Lucy at 878-4978 or Dorothy at 333-3499.

Tuesday Sept. 15

The Alzheimer's Family Support Group meets in the Pettit House at Halton Centennial Manor from 7 to 8 p.m. For more information, contact Yvonne Stupak at 878-4141.

\$1500 CASH BACK*
on Full-size Pickups, Lumina APV, Chevy S10 Blazer and Geo Metro Convertible. Ask about cash backs on other vehicles.

FINANCING AS LOW AS 3.9%
available on Geo Metro Convertible.

NO CHARGE OPTIONS
LIKE AIR CONDITIONING ON SELECTED MODELS*

SPECIAL LOW LEASE RATES
ON SELECTED OLDSMOBILES.

At Your Chevrolet • Geo • Oldsmobile Dealers

THIS IS IT!

We're making car buying easier with "no hassle" window prices.

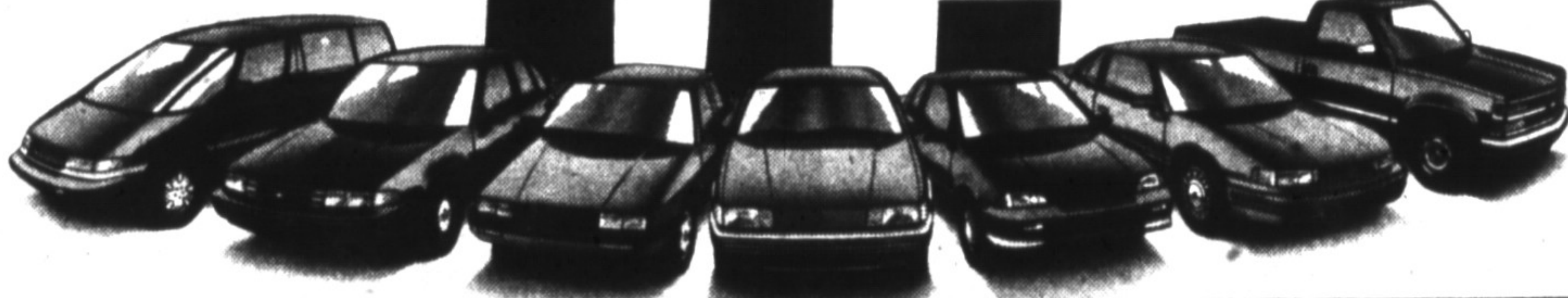
Geo Metro Hatchback Coupe. A Small Price To Pay For A Whole Lot of Fun.

\$7,240
Includes \$1000 GM Cash Back*

Chevy Cavalier. Canada's Best Selling Car.

With Air Conditioning, Automatic Transmission, Anti-Lock Brakes, AM/FM Cassette, and more.

\$10,795**
Includes \$1250 GM Cash Back*



THE FINAL COUNTDOWN

Prices just don't get any better than this. Hurry in today to your Chevrolet • Geo • Oldsmobile dealers.

CHEVROLET • GEO • OLDSMOBILE THE ROAD TO VALUE



*These offers may not be combined or used in combination with any other offer except the College Graduate Program. Offer applies to 1992 new and unused. **Manufacturer's suggested retail price. Dealer's actual price may vary. Offer valid for a limited time starting Aug. 12, 1992. For complete terms and conditions, see your participating dealer. Cash back offer includes GM Financing offer available with no limit on the amount financed. To qualify retail buyers financing their purchase through GMAC on a maximum 48 month contract. Example: For a \$10,000 financed over 48 months at 1.9% APR, the monthly payment is \$215.34, the cost of borrowing is \$184.32 and the total amount to be repaid is \$10,384.32. Assuming a rebate of \$1,250 on the amount financed, should you purchase the vehicle through GMAC, the monthly payment is \$205.34, the cost of borrowing is \$174.32 and the total amount to be repaid is \$10,184.32. **1992 Manufacturer's suggested retail price including \$1,250 GM cash back for standard equipped Chevy Cavalier as described. Freight, license, insurance, GST and other applicable taxes not included. Dealer sets final price. See Dealer for details.

Good Neighbours

Standing by each other
GOOD NEIGHBOURS
clean up after their pets