

Bazar first to announce he'll run for Liberal nomination

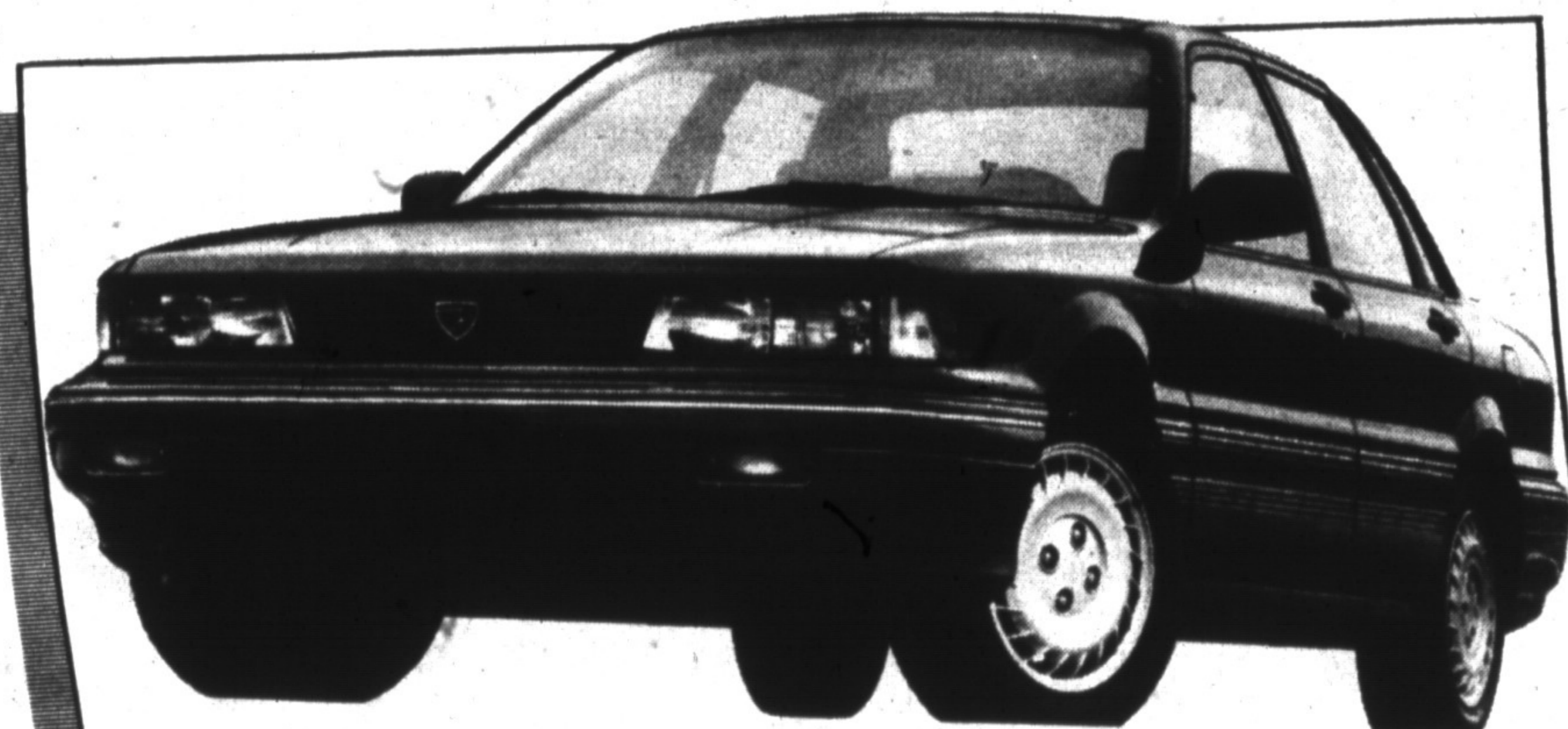
from POTENTIAL on page 9
 in favour of a new Liberal Party, a rejuvenated Liberal Party. Voters don't want retreats (candidates)," he said.
 "The Liberal Party is different than it was 100 years ago.
 "I think the party realizes the social programs it began have gone too far and it's

time to reel them back," he said.
 Excessive government bureaucracy, a cumbersome and expensive corporate tax system and the GST (Goods and Services Tax) have combined to stem foreign investment and stifle economic growth, said Mr. Bazar.
 "In an effort to share the pie equally we've driven the tax base down. We're now

into economic regressive taxation and the economy continues to get smaller and smaller.
 "Small business is inundated with taxes and bureaucracy.
 "We need to allow businesses to operate and flourish freely. If foreign investors begin to perceive Canada as a bad place to invest

their money, we're going to be in trouble," he said.
 Mr. Bazar said if elected he would lobby to streamline government bureaucracy — including the elimination of the Senate which he believes impedes legislative change — eliminate corporate taxation and merge the GST with the PST (Provincial Sales Tax).

Presenting The SIGN & SAVE BONUS from Jeep & Eagle



Just sign a deal on a 2000 GTX and save an extra \$500!
 For a limited time you can choose 5.9% 48 month financing or \$1000 cash back and we'll give you an additional \$500 when you sign your deal.

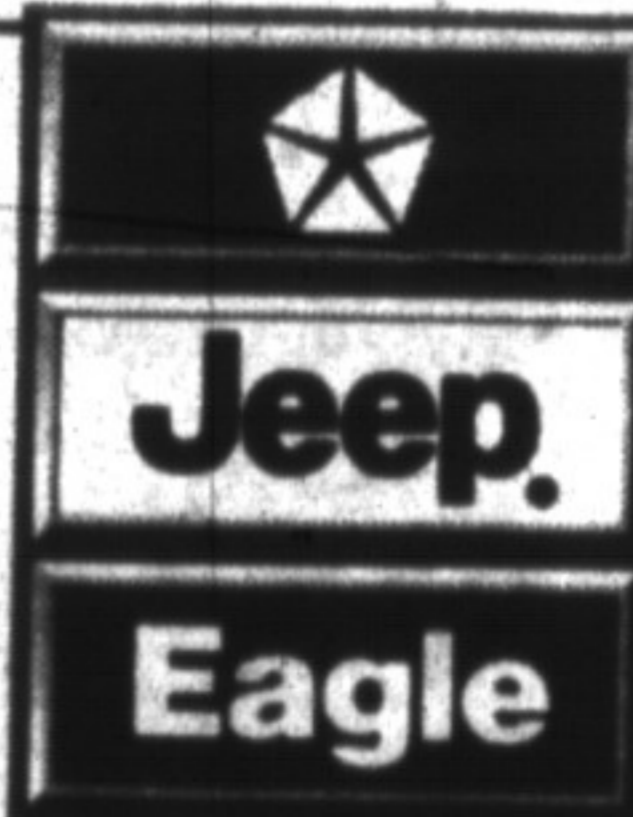
Or take advantage of these generous incentives.



Ask about a \$750 Graduate Rebate and Gold Key Bumper-to-Bumper lease plans.

JEEP YJ	6.9% 48 MONTH FINANCING OR \$500 CASH BACK PLUS \$500 SIGNING BONUS
JEEP CHEROKEE	5.9% 48 MONTH FINANCING OR \$1500 CASH BACK PLUS \$500 SIGNING BONUS
EAGLE TALON	5.9% 48 MONTH FINANCING OR \$1000 CASH BACK
EAGLE SUMMIT SEDAN	3.9% 48 MONTH FINANCING OR \$1250 CASH BACK
EAGLE VISTA	3.9% 48 MONTH FINANCING OR \$1000 CASH BACK
JEEP COMANCHE	6.9% 48 MONTH FINANCING OR \$500 CASH BACK

Milton Jeep/Eagle
 81 Ontario Street, Milton, Ontario
 878-8877 Sales
 878-8808 Service 842-2544 Toronto Line



Hurry! This Offer Ends August 31!

*Offers mutually exclusive and for personal use only. Applies to 1992 in-stock vehicles. Financing for a maximum of 48 months subject to approval by Chrysler Credit Canada Limited. Signing Bonus to be finalized upon agreement to purchase, and in effect from introduction date until terminated by participating dealers. Example: \$10,000 financed at 3.9%, 5.9% or 6.9% APR for 48 months. Monthly payments \$225.34, \$234.49 or \$239.00. Cost of borrowing \$916.32, \$1,250.72 and \$1,472.00 respectively. Total to be repaid \$10,916.32, \$11,250.72 and \$11,472.00. With \$500.00, \$750.00, \$1,000.00, \$1,250.00 or \$1,500.00 rebate not taken, statutorily required recalculated C.O.B. expressed in dollars and percent \$1,972.00, \$2,222.00, \$1,616.32, \$2,086.32 and \$2,750.72 and 9.57%, 10.96%, 9.32%, 10.61% and 14.4% per annum. In effect, from July 1, 1992 until terminated by Chrysler Credit Canada Limited. Retail lease vehicles eligible for cash only. These offers cancel, replace, and may not be combined with any previous offers. Freight, license, taxes, insurance, registrations, and other fees are extra. See dealer for details.

Lido 龍記
RESTAURANT
 878-9061
 • Chinese & Canadian Food
 • Lunch & Dinner Buffets
 • Salad Bar and Desserts
 181 MAIN ST. E.
 If busy call
 878-4551
 MSG FREE ON REQUEST

100 PREMIER MILTON Cinemas
 121 CHISHOLM RD. MILTON
 W. OF HWY 25 - S. OF 301 876-3333
NEW LOW PRICE!
 all seats \$4.25 MON. to THURS.
1 STARTS FRIDAY UNFORGIVEN
 Fri., Sat. & Sun. 7:00 & 9:00 p.m.
 Mon. to Thurs. 7:30 p.m. only
 LAST 2 DAYS - WED. & THURS.
 DEATH BECOMES HER
 7:00 & 9:00 p.m.
2 STARTS FRIDAY MO' MONEY
 Fri., Sat. & Sun. 7:00 & 9:00 p.m.
 Mon. to Thurs. 7:30 p.m. only
 LAST 2 DAYS - WED. & THURS.
 CHRISTOPHER COLUMBUS
 7:00 & 9:00 p.m.
3 STARTS FRIDAY WHISPERS IN THE DARK
 Fri., Sat. & Sun. 7:00 & 9:00 p.m.
 Mon. to Thurs. 7:30 p.m. only
 LAST 2 DAYS - WED. & THURS.
 7 p.m. 3 NINJAS - 9 p.m. STAY TUNED
 DRIVE-IN IS NOW OPEN 7 NIGHTS A WEEK
 9th LINE OAKVILLE (South of Hwy 5)

ANDREWS SCENIC ACRES
 Milton—878-5807
BUMPER CROP
 "Bert Blueberry"
BLUEBERRIES & SUPER SWEET CORN
WEEKENDS
 • Buttered Super Sweet Corn
 • Pony Rides
 • Wagon Rides
 • Baked Goodies
 Animal Corral • Playground

APPLE AutoGlass
 • Windshield Stone Chip Repairs
 • Sunroofs
 • Tonneau Covers
 • Running Boards
 • Auto Upholstery
 Locally Owned & Operated
 781 MAIN ST. EAST
 876-4785